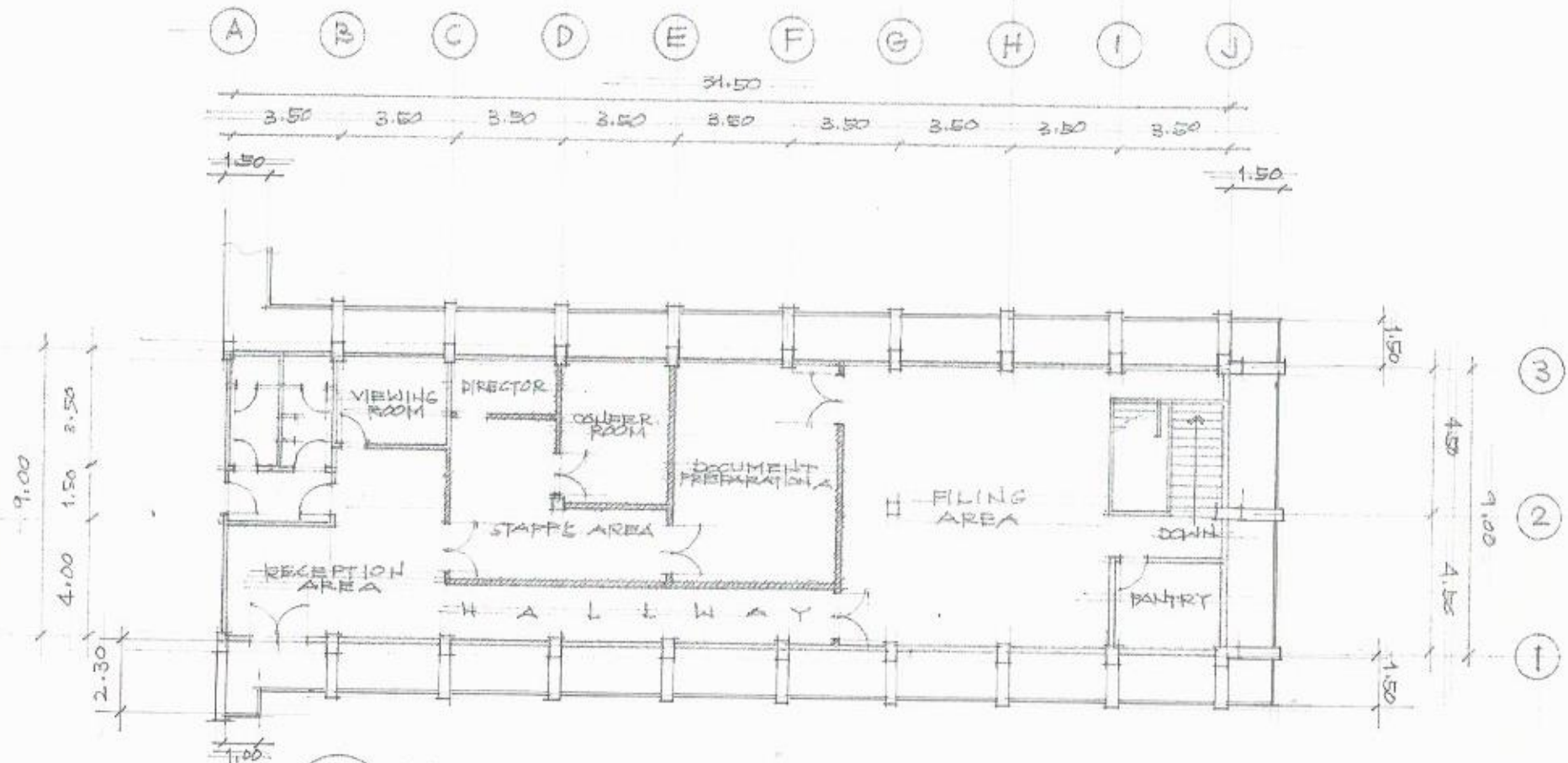


1
1
LOWER GROUND FLOOR
 SCALE: 1:200 MTS

PREPARED:	END USER	ENDORSED:	REC. AP.	APPROVED	PROJECT TITLE:	AGENCY:	SHEET #
SBRAYOT, JP	N. CRESINO	FOR RBCU RUBILA	HOGARCIA	HROBLES	OLD COLLEGE LIBRARY BLDG. (FOR GAD OFFICE)	CVSU	1

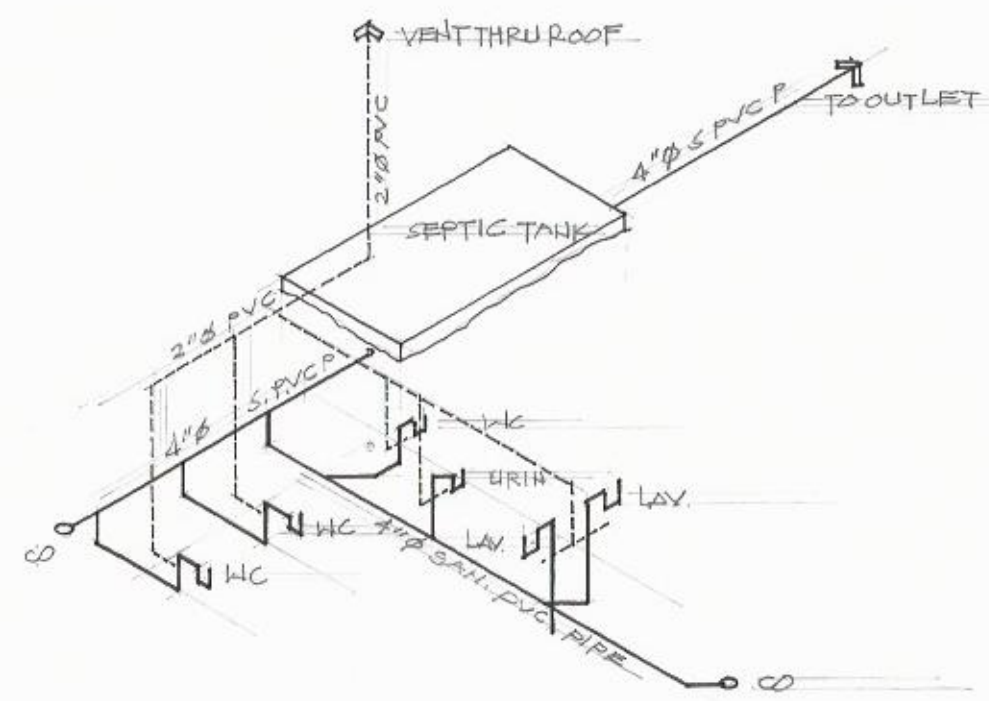
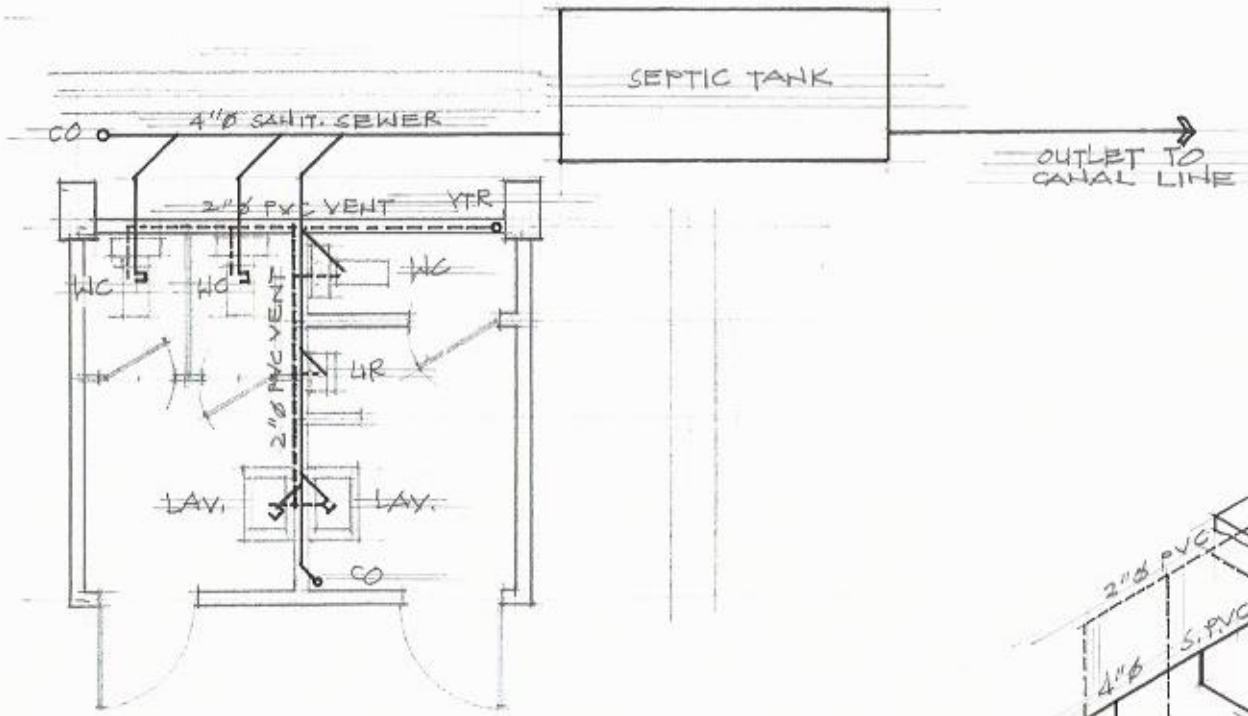


1 UPPER GROUND FLOOR PLAN
 2 SCALE 1/200MTS

LEGEND

- 6' HEIGHT PARTITION (4' WALL PANEL, 2' GLASS PANEL)
- STANDARD WALL PARTITION

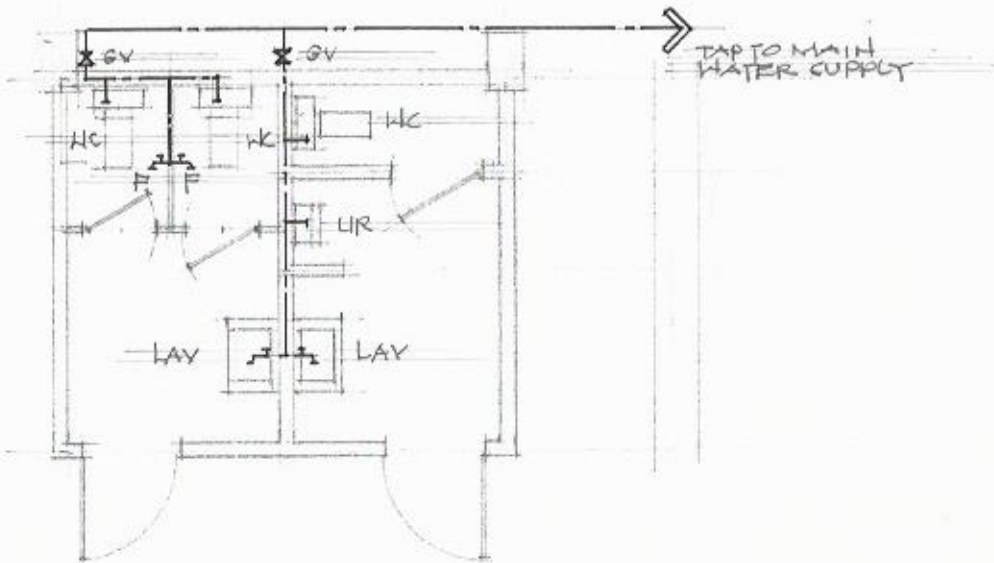
PREPARED:	END USER:	ENDORSED:	REC APP.	APPROVED:	PROJECT TITLE:	AGENCY:	SHEET#:
<i>[Signature]</i>	A. MANUEL	<i>[Signature]</i>	HOGARCA	<i>[Signature]</i>	OLD COLLEGE LIBRARY BUILDING (FOR GAD OFFICE)	CVSU	2



ISOMETRIC VIEW

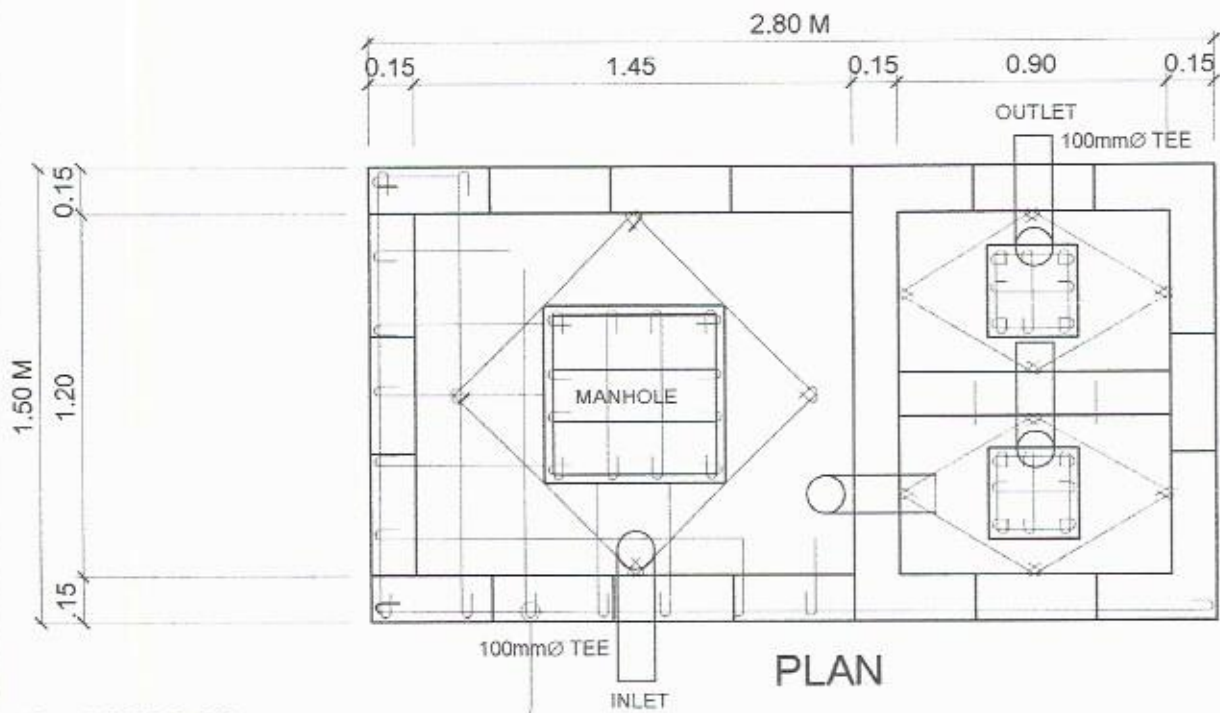
1
3
SANITARY SEWER LAYOUT
SCALE 1:60 MTS

PREPARED:	END USER:	ENDORSED:	REC. APP	APPROVED:	PROJECT TITLE:	AGENCY:	SHEET#
<i>[Signature]</i>	<i>[Signature]</i>	<i>[Signature]</i>	<i>[Signature]</i>	<i>[Signature]</i>	OLD COLLEGE LIBRARY BLDG. (FOR GAD OFFICE)	C.S.U	3
SPRANO, D.	N. CRESINO	R. B. CUBILLA	H. GARCIA	H. ROBLES			

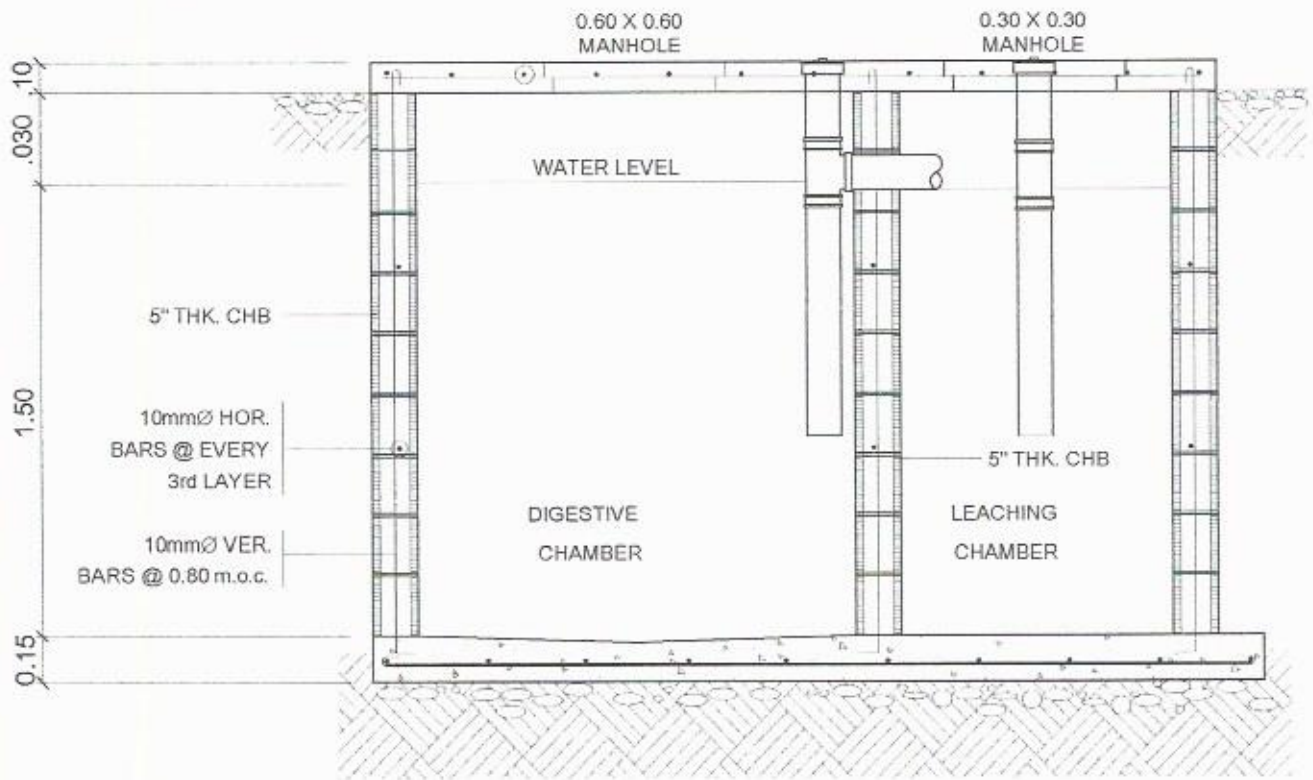


1 WATER SUPPLY LAYOUT PLAN
 4 SCALE 1:60 MTS

PREPARED:	END USER:	ENDORSED:	REC. APP.	APPROVED:	PROJECT TITLE:	AGENCY:	SHEET#
SPBAYOT	N. CRESINO	RBCUBILA	HOGARCIA	HDROBLES	OLD COLLEGE LIBRARY BLDG. (FOR GAD OFFICE)	CvSU	4



12mmØ BARS @ 0.20 m.o.c.



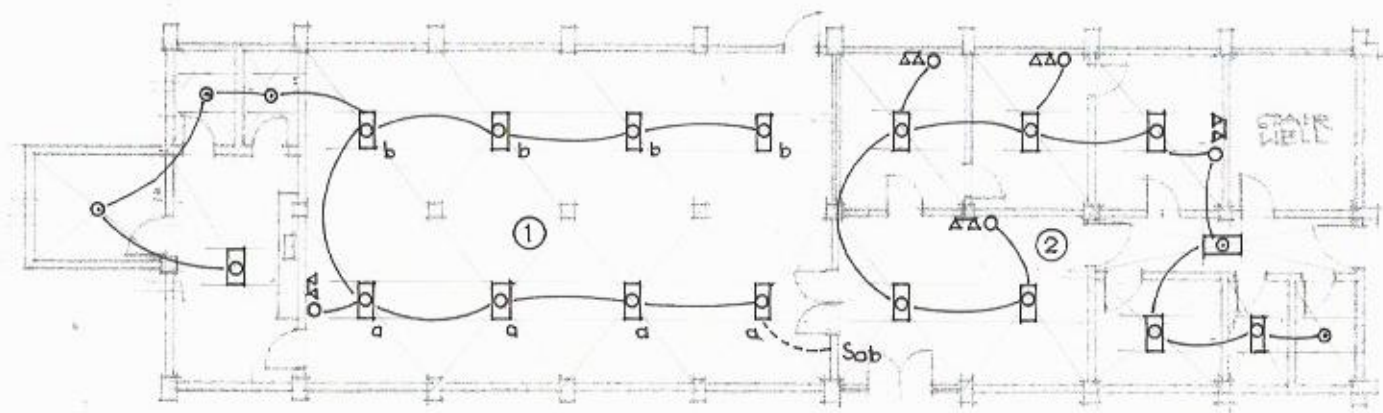
SECTION

DETAIL OF SEPTIC TANK



SCALE

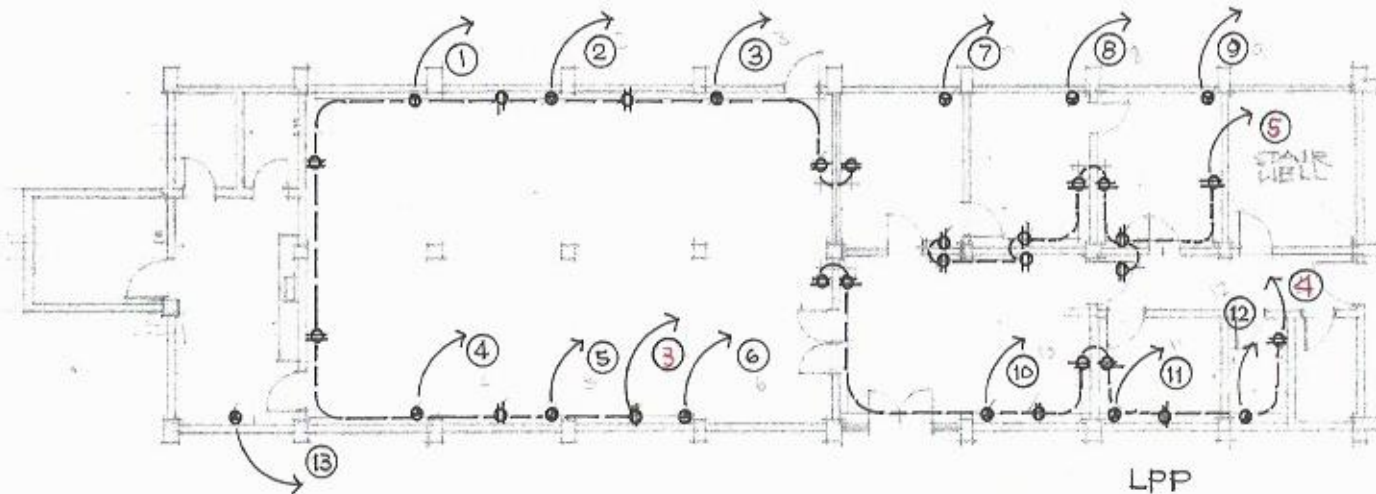
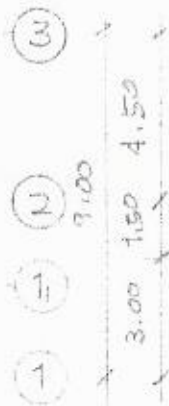
1 : 20 MTS.



□ 2 FLOUR. LIGHT W
 - DIFFUSER
 LPP
 ○ 1-12 LIGHTING OUTLET
 ○ 2-13 LIGHTING OUTLET

1
6
 LOWER GROUND FLOOR
 SCALE: 1:200 MTS
 LIGHTING POWER LAYOUT

PREPARED BY	END USER	ENDORSED	REC APP	APPROVED	PROJECT TITLE:	AGENCY:	SHEET #
SBBAYO	N. CRESINO	R. CUBILLA	H. GARCIA	H. ROBLES	OLD COLLEGE LIBRARY BLDG. (FOR CAD OFFICE)	CvSU	6



LPP

- 3 8 CONV. OUTLET
- 4 7 CONV. OUTLET
- 5 9 CONV. OUTLET

ACP

- 1 1.5 H.P.
- 2 1.5 H.P.
- 3 1.5 H.P.
- 4 1.5 H.P.
- 5 1.5 H.P.
- 6 1.5 H.P.
- 7 1.0 HP
- 8 1.0 HP
- 9 1.0 HP
- 10 2.0 HP
- 11 1.0 HP
- 12 0.50 HP
- 13 1.00 HP

1 LOWER GROUND FLOOR
7
SCALE: 1:200 MTS

PREPARED:	END USER:	ENDORSED:	REC APP.	APPROVED:	PROJECT TITLE:	AGENCY:	SHEET#
<i>[Signature]</i>	N. CRESINO	RB CUELLA	HOGARCIA	<i>[Signature]</i>	OLD COLLEGE LIBRARY BLDG. (FOR GAO OFFICE)	CVS4	7

LP1 - Lighting & Power Panel 1

Single Phase 2- Wires + Ground 230V Surface Mounted

Circuit No.	No. of Outlets	Description	Rating of Load					Size of Conductor (mm ²)			Color Code	Ø Conduit (mm ²)	Circuit Protection				
			HP	Φ	Volts	Watt	Amp	THHN	+	THHN (G)			AT	AF	kAIC	POLE	Type
1	12	Lighting Outlet		1	230	1200	5.22	2 - 3.5			1R, 1BLK	20	15	100	10	2	B - On
2	13	Lighting Outlet		1	230	1300	5.65	2 - 3.5			1R, 1BLK	20	15	100	10	2	B - On
3	8	Covenience Outlet		1	230	1440	6.26	2 - 3.5	+	1 - 3.5	1R, 1BLK, 1G	20	20	100	10	2	B - On
4	8	Covenience Outlet		1	230	1080	4.70	2 - 3.5	+	1 - 3.5	1R, 1BLK, 1G	20	20	100	10	2	B - On
5	9	Covenience Outlet		1	230	1620	7.04	2 - 3.5	+	1 - 3.5	1R, 1BLK, 1G	20	20	100	10	2	B - On
6	1	ACU Outlet, WT	1.5	1	230	2300	10.00	2 - 3.5	+	1 - 3.5	1R, 1BLK, 1G	20	30	100	10	2	B - On
7	1	ACU Outlet, WT	1.5	1	230	2300	10.00	2 - 3.5	+	1 - 3.5	1R, 1BLK, 1G	20	30	100	10	2	B - On
8	1	ACU Outlet, WT	1.5	1	230	2300	10.00	2 - 3.5	+	1 - 3.5	1R, 1BLK, 1G	20	30	100	10	2	B - On
9	1	ACU Outlet, WT	1.5	1	230	2300	10.00	2 - 3.5	+	1 - 3.5	1R, 1BLK, 1G	20	30	100	10	2	B - On
10	1	ACU Outlet, WT	1.5	1	230	2300	10.00	2 - 3.5	+	1 - 3.5	1R, 1BLK, 1G	20	30	100	10	2	B - On
11	1	ACU Outlet, WT	1.5	1	230	2300	10.00	2 - 3.5	+	1 - 3.5	1R, 1BLK, 1G	20	30	100	10	2	B - On
12	1	ACU Outlet, WT	1.0	1	230	1840	8.00	2 - 3.5	+	1 - 3.5	1R, 1BLK, 1G	20	30	100	10	2	B - On
13	1	ACU Outlet, WT	1.0	1	230	1840	8.00	2 - 3.5	+	1 - 3.5	1R, 1BLK, 1G	20	30	100	10	2	B - On
14	1	ACU Outlet, WT	1.0	1	230	1840	8.00	2 - 3.5	+	1 - 3.5	1R, 1BLK, 1G	20	30	100	10	2	B - On
15	1	ACU Outlet, WT	2.0	1	230	2760	12.00	2 - 3.5	+	1 - 3.5	1R, 1BLK, 1G	20	30	100	10	2	B - On
16	1	ACU Outlet, WT	1.0	1	230	1840	8.00	2 - 3.5	+	1 - 3.5	1R, 1BLK, 1G	20	30	100	10	2	B - On
17	1	ACU Outlet, WT	0.5	1	230	1127	4.90	2 - 3.5	+	1 - 3.5	1R, 1BLK, 1G	20	30	100	10	2	B - On
18	1	ACU Outlet, WT	1.0	1	230	1840	8.00	2 - 3.5	+	1 - 3.5	1R, 1BLK, 1G	20	30	100	10	2	B - On
19		Spare															
20		Spare															
TOTAL				1	230	25960.00	112.87	2 - 14 THHN	+	1 - 5.0 THHN	1R, 1BLK, G	32					

FEEDER and CURRENT PROTECTION COMPUTATION:

NOTE: G - Means Ground Wire
 1R- Color RED
 1BK- Color BLACK
 1G- Color GREEN

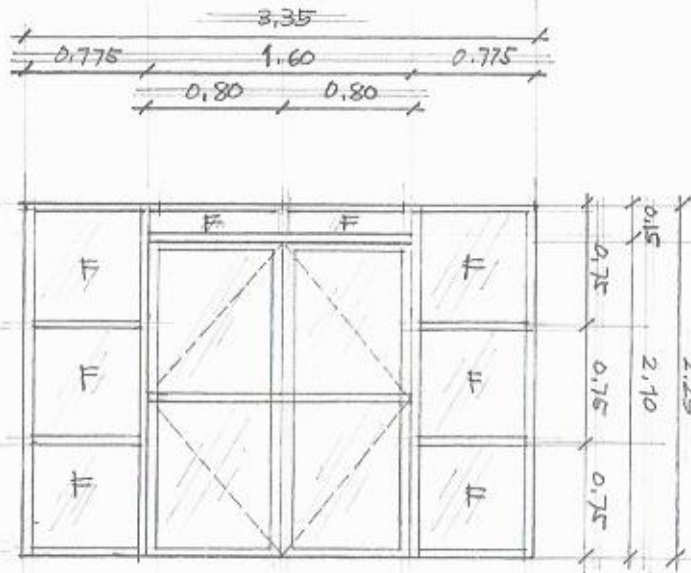
USE: $IFL = \frac{[75.00 + (25\% \times Im)] DF}{}$ = 116.87 Amperes
PEC 2009 Section 4.40.1.7 Page # 741 and Section 4.30.2.4 Page # 687

FEEDER: 2 - 30.0 mm² THHN + 1 - 5.5 THHN mm² (G) in 32mm ø RSC

USE: $ICB = \frac{[75.00 + (250\% \times Im)] DF}{}$ = 142.87 Amperes
PEC 2009 Section 4.30.4.2 Page # 687 and Table # 4.30.4.2 Page # 700
 (Inverse Time Delay (ITD) Breakers)

MAIN: 150AT, 225AF, 240V, 2P, 10 kAIC, CB with Solid Neutral

*This Electrical Design is good only for the above connected loads.
 Any additional electrical load connection in the future is prohibited,
 Except redesign of electrical load system will be done.*



D-1

2,10 X 1,60 POWDER COATED ALUM. SWING TYPE
DOOR WITH 2 - 0,775 X 2,25 FIXED PANEL GLASS
AND 0,15 X 1,60 TRANSOM WINDOW WITH COMPLETE
ACCESSORIES WITH GREEN (7/84) THK GLASS

ONE (1) SET

PREPARED BY	END USER	ENDORSED	REC APP	APPROVED	PROJECT TITLE	AGENCY	SHEET #
SBBAYOTIN	N. CRESINO	RECUBILDA	HOGARCIA	HOROBLES	OLD COLLEGE LIBRARY BLDG. (FOR GAD OFFICE)	CvSU	10