

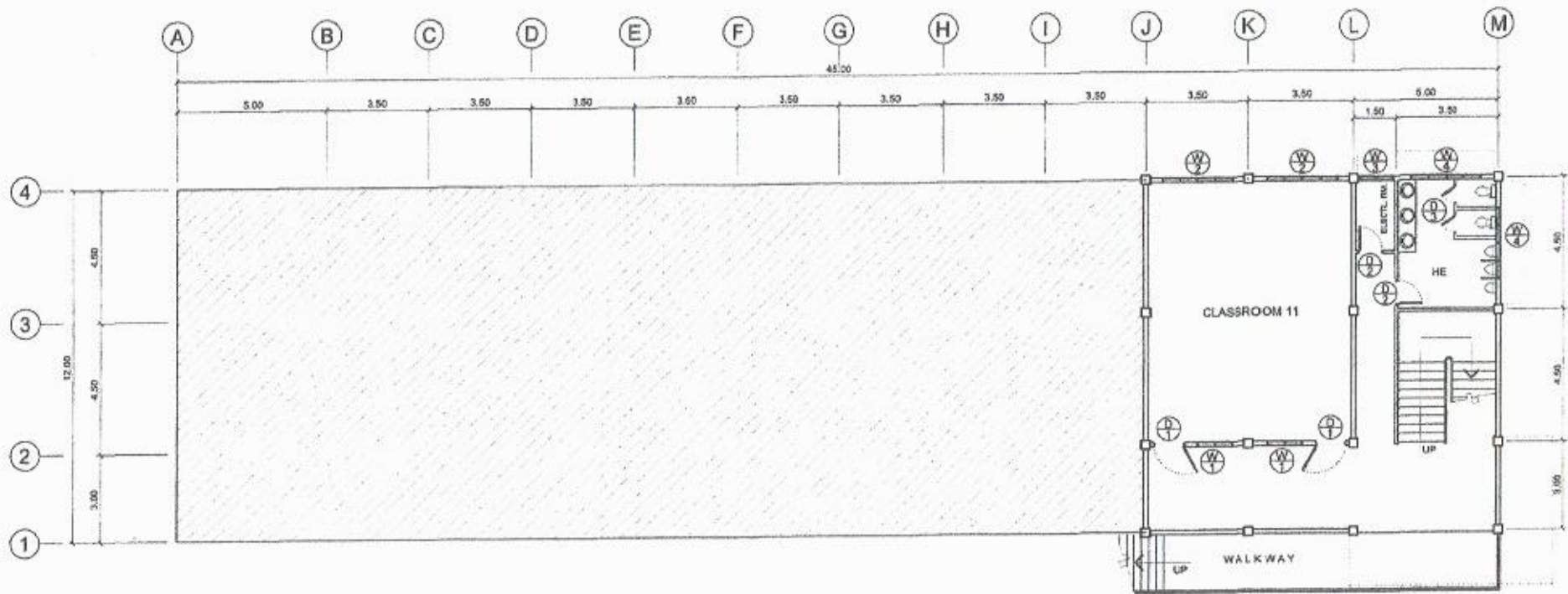


PERSPECTIVE



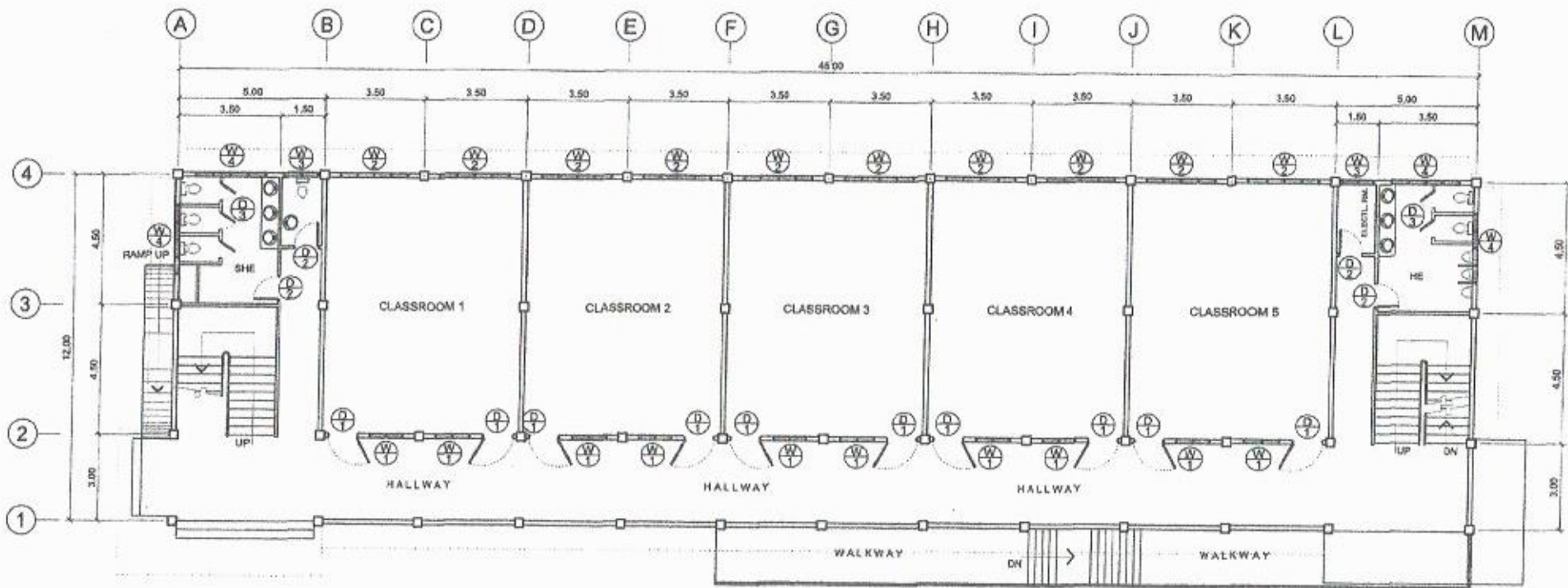
SITE DEVELOPMENT PLAN
SCALE 1: 1200 M.


PREPARED BY: <i>S. B. Bayot Jr.</i> S. B. BAYOT JR. PPU	CHD BY: <i>E. Roderos Jr.</i> E. RODEROS JR. PPU	END-USER: <i>Noel A. Sedigo</i> NOEL A. SEDIGO OSAN	ENDORSED BY: <i>Renato B. Cubilla</i> RENATO B. CUBILLA DIRECTOR - PLANNING OFFICE	RECOMMENDATION: <i>Henry O. Garcia</i> HENRY O. GARCIA VPAS	CARRIAGE BY: <i>Hernando D. Robles</i> HERNANDO D. ROBLES PRESIDENT	PROJECT TITLE/LOCATION: <i>Two Storey School Bldg.</i> TWO STOREY SCHOOL BLDG. CAVITE STATE UNIVERSITY TRICE CAMPUS TRICE HARRIS DEV CAMPUS	IMPLEMENTING AGENCY: CAVITE STATE UNIVERSITY	DRAWING NO.: A / 1
--	---	--	---	--	--	--	---	-----------------------



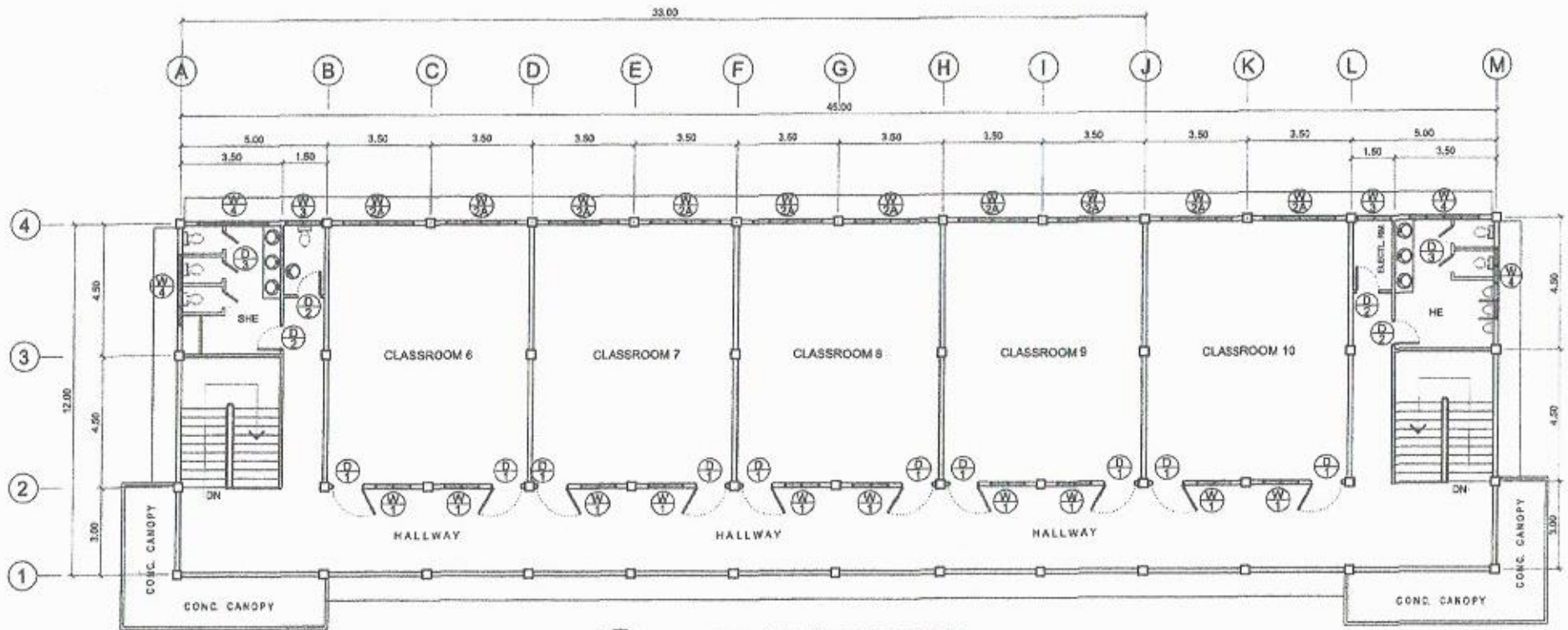

LOWER GROUND FLOOR PLAN
 SCALE 1 : 150 MTS.

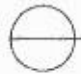
PREPARED BY: S. B. BAYOT JR. <small>APU</small>	CADDED BY: E. RODRIGOS JR. <small>APU</small>	INCH-USER: NOEL A. SEDIGO <small>DEAN</small>	ENGINEER BY: RENATO B. CUBILLA <small>DIRECTOR PLANNING OFFICE</small>	REGISTERED PERSONAL: HENRY O. GARCIA <small>PROFESSIONAL</small>	APPROVED BY: HERNANDO D. ROBLES <small>PRESIDENT</small>	PROJECT TITLE / LOCATION: TWO STOREY SCHOOL BLDG. <small>CAVITE STATE UNIVERSITY TREC CAMPUS TREC WATERS CITY CAMPUS</small>	IMPLEMENTING AGENCY: CAVITE STATE UNIVERSITY	SHEET NO. A / 2
--	--	--	---	---	---	---	--	---------------------------



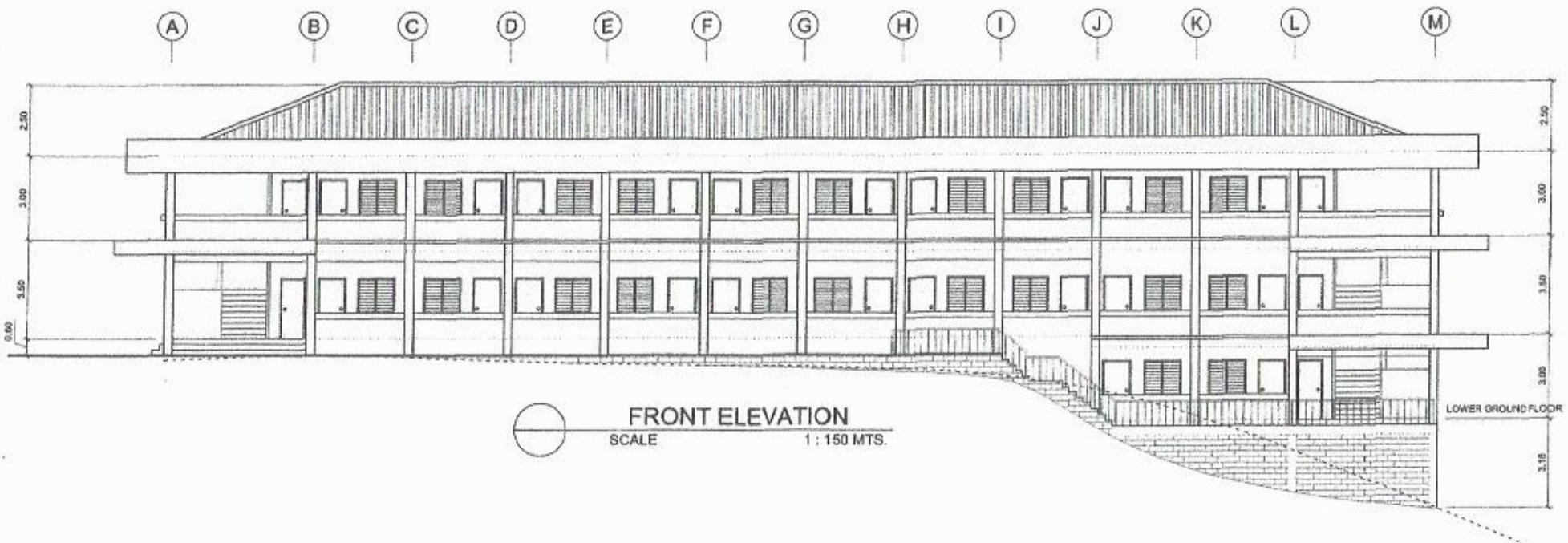

UPPER GROUND FLOOR PLAN
 SCALE 1 : 150 MTS.

PREPARED BY S. B. BAYOT JR. PNU	DRAWN BY E. ROBEROS JR. PNU	INCH-USER NOEL A. SEDIGO DEAN CAMPUSES	ENDORSED BY RENATO B. CUBILLA DIRECTOR TRAINING OFFICE	REVIEWER(S) HENRY O. GARCIA VPUS	APPROVING BY HERNANDO D. ROBLES PROVOST GSU	PROJECT TITLE / LOCATION TWO STOREY SCHOOL BLDG. CAVITE STATE UNIVERSITY TRIBE CAMPUS TRIBE MARITIME CITY CAMPUS	IMPLEMENTING AGENCY CAVITE STATE UNIVERSITY	SHEET NO. A / 3
--	--	--	--	---	---	--	---	---------------------------

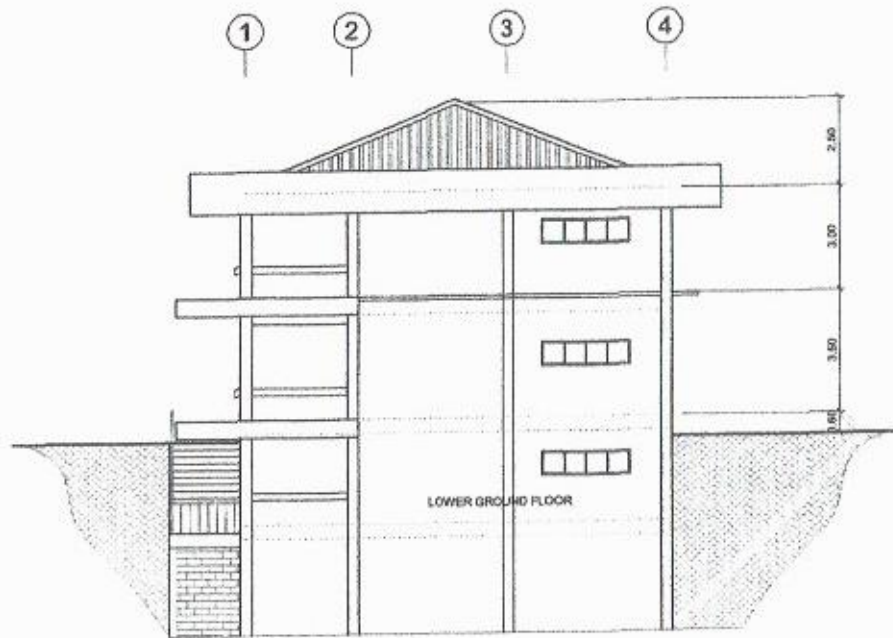


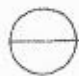

SECOND FLOOR PLAN
 SCALE 1 : 150 MTS.

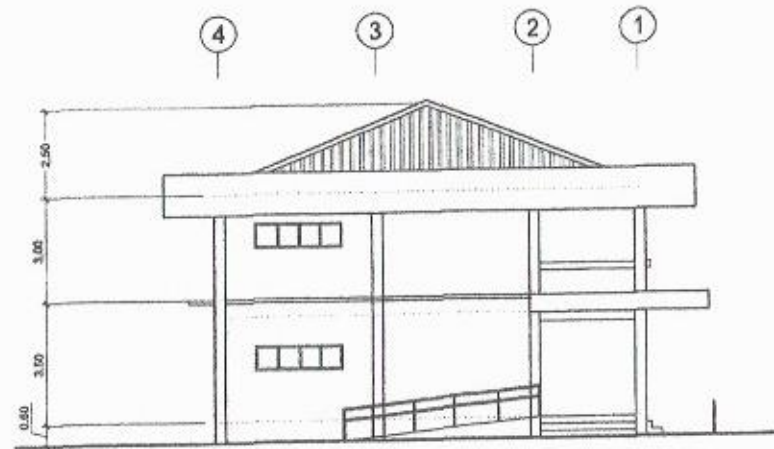
PREPARED BY	DRAWN BY	DESIGNED BY	ENGINEER BY	REGISTERED ARCHITECT	APPROVED BY	PROJECT TITLE / LOCATION	IMPLEMENTING AGENCY	SHEET NO.
S. B. BAYOT JR. PNU CET	E. RODEROS JR. PNU CET	NOEL A. SEDIGO DCAN DCAN	RENATO B. CUBILLA DIRECTOR PLANNING OFFICE	HENRY O. GARCIA VENIS C-NU	HERNANDO D. ROBLES PRESIDENT CNU	TWO STOREY SCHOOL BLDG. CAVITE STATE UNIVERSITY TRESE CAMPUS TROCIWATRES CITY CAMPUS	CAVITE STATE UNIVERSITY	A / 4




PREPARED BY	DRAWN BY	ENDORSED BY	ENGINEER BY	REVISIONS/REVISION	APPROVED BY	PROJECT TITLE / LOCATION	IMPLEMENTING AGENCY	SHEET NO.
S. B. BAYOT JR. CPU	E. RODRIGOS JR. CPU	NOEL A. SODIGO DEAN TI CAMPUS	RENATO B. CUBILLA DIRECTOR PLANNING OFFICE	HENRY O. GARCIA UPPER C-83	HERNANDO D. ROSALES PRESIDENT CPU	TWO STOREY SCHOOL BLDG. CAVITE STATE UNIVERSITY TRINIDAD CAMPUS DICE WATERSIDE CITY CAMPUS	CAVITE STATE UNIVERSITY	A / 5

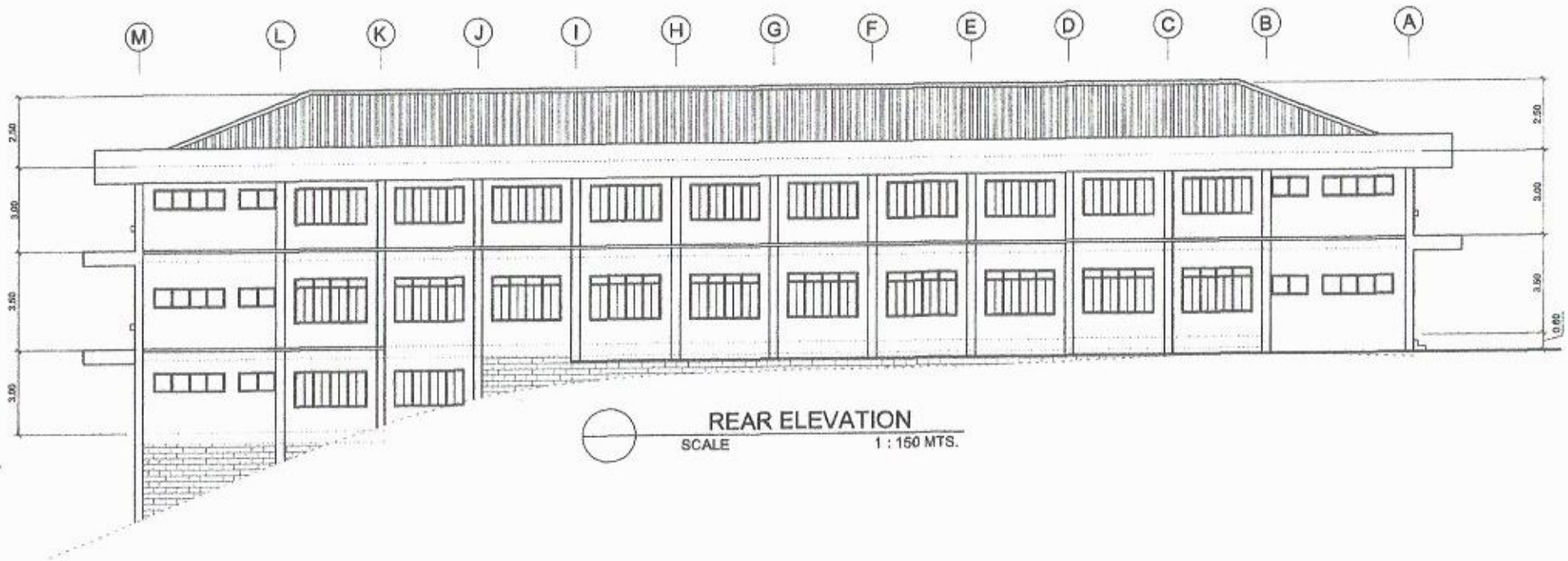



RIGHT SIDE ELEVATION
 SCALE 1 : 150 MTS.




LEFT SIDE ELEVATION
 SCALE 1 : 150 MTS.

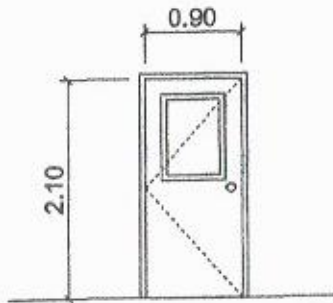
PREPARED BY S. B. BAYOT JR. PPU	CADD BY E. RODRIGOS JR. PPU	ENCL. DES. NOEL A. SEDIGO DEAN TI CAMPUS	ENGINEERED BY RENATO B. CUBILLA CRECTOR PLANNING OFFICE	REGISTERED ARCHITECT HENRY O. GARCIA 1948	APPROVED BY HERNANDO D. ROBLES DEAN TI CAMPUS	PROJECT TITLE / LOCATION TWO STOREY SCHOOL BLDG. CAVITE STATE UNIVERSITY TIGEL CAMPUS TRIGEL CAMPUS CITY CAMPUS	SCHOOL / CLIENT AGENCY CAVITE STATE UNIVERSITY	SHEET NO. A / 6
---------------------------------------	-----------------------------------	---	--	---	--	---	---	--------------------



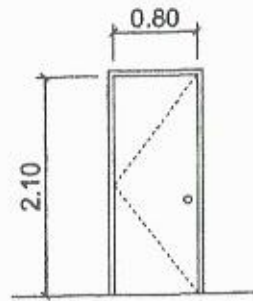
REAR ELEVATION

SCALE 1 : 150 MTS.

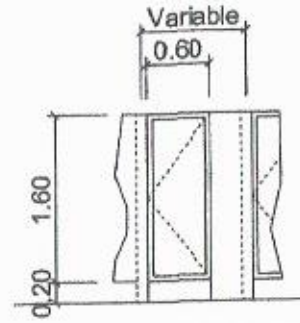
PREPARED BY	DRAWN BY	ENCL. USER	ENGINEER BY	PROF. APPROVAL	APPROVED BY	PROJECT TITLE / LOCATION	IMPLEMENTING AGENCY	SHEET NO.
S. B. BAYOT JR. CPU	E. RODEROS JR. CPU	NOEL A. SEDIGO SEAL	RENATO B. CUBILLA DIRECTOR PLANNING OFFICE	HENRY O. GARCIA V.P.	HERNANDO. D. ROBLES PRESIDENT CPU	TWO STOREY SCHOOL BLDG. CAVITE STATE UNIVERSITY WEDC CAMPUS TRINIDAD CITY CAMPUS	CAVITE STATE UNIVERSITY	A / 7



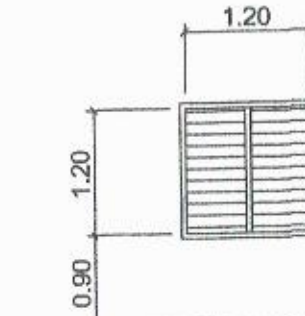
(D 1) 0.90 X 2.10 FLUSH DOOR W/
1/4" THK. CLEAR GLASS VIEW
WINDOW, W/ COMPLETE
ACCESSORIES
22 SETS



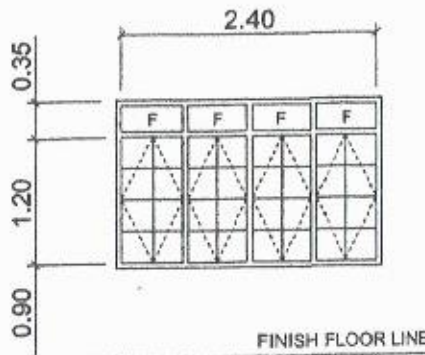
(D 2) 0.80 X 2.10 FLUSH DOOR W/
W/ COMPLETE ACCESSORIES
10 SETS



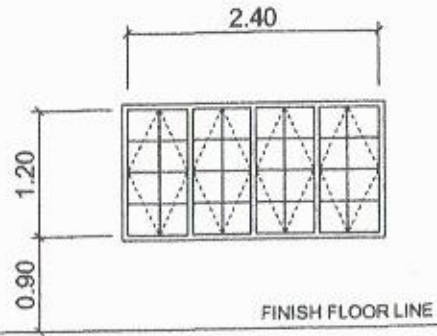
(D 3) 0.60 X 1.60 STAINLESS DOOR PANEL
W/ COMPLETE ACCESSORIES
12 SETS



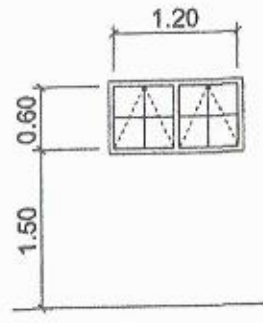
(W 1) ALUMINUM FRAME JALOUSIE WINDOW
W/ 1/4" THK. SMOKED GLASS & 12MM.
SQUARE BAR GRILLS & 1/4" THK X 1"
FLAT BAR FRAME
22 SETS



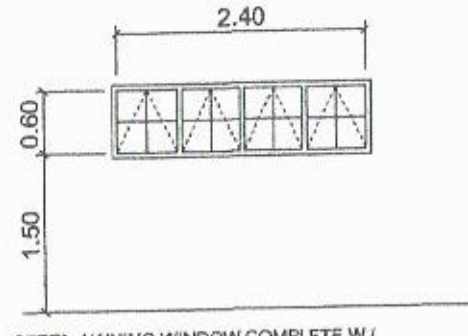
(W 2) STEEL CASEMENT WINDOW COMPLETE W/
ALL ACCESSORIES W / 1/4" THK CLEAR GLASS
W/ 12MM SQUARE BAR GRILLS
10 SETS



(W 2A) STEEL CASEMENT WINDOW COMPLETE W/
ALL ACCESSORIES W / 1/4" THK CLEAR GLASS
W/ 12MM SQUARE BAR GRILLS
12 SETS

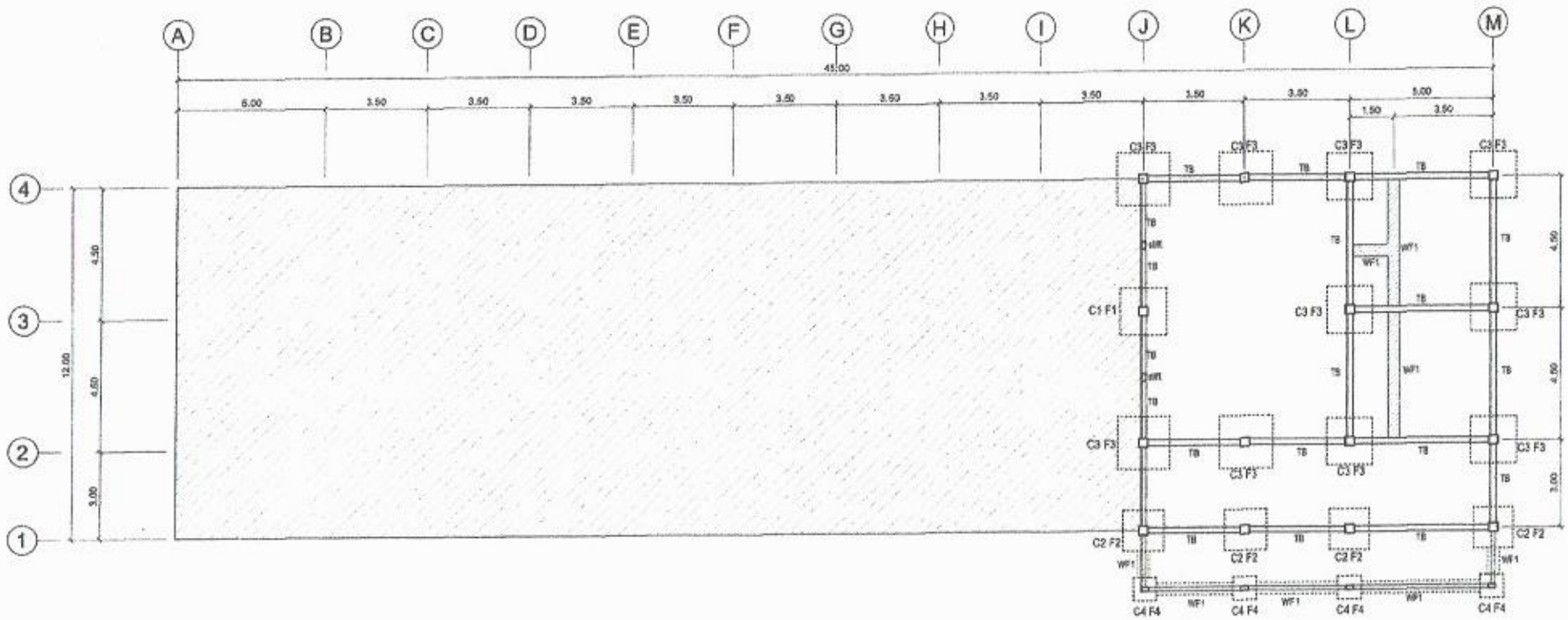


(W 3) STEEL AWNING WINDOW COMPLETE W/
ALL ACCESSORIES W / 1/4" THK CLEAR GLASS
W/ 12MM SQUARE BAR GRILLS
5 SETS



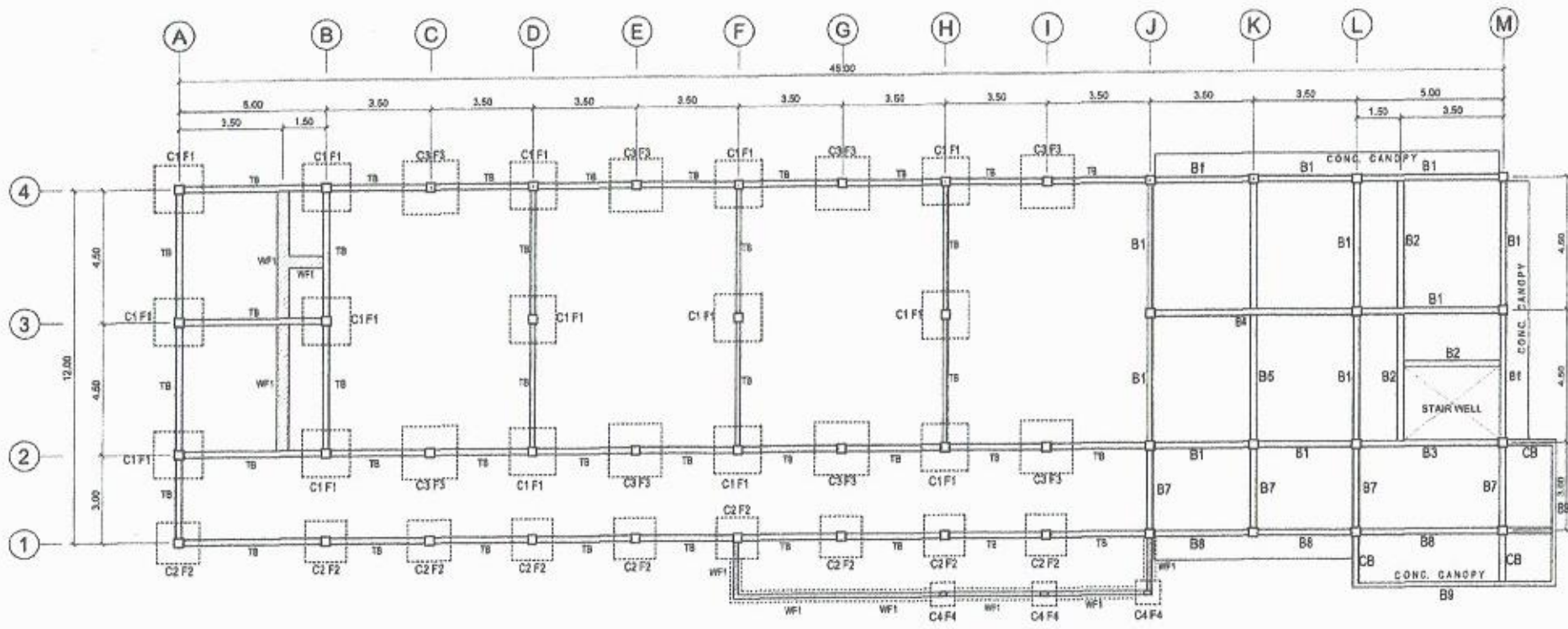
(W 4) STEEL AWNING WINDOW COMPLETE W/
ALL ACCESSORIES W / 1/4" THK CLEAR GLASS
W/ 12 MM SQUARE BAR GRILLS
10 SETS

PREPARED BY	DRAWN BY	ENGINEER	ENDORSED BY	RECORDS/PROJ. MGR.	APPROVED BY	PROJECT TITLE/LOCATION	IMPLEMENTING AGENCY	SHEET NO.
S. B. BAYOT JR. PM	E. RODEROS JR. PM	NOEL A. SEDIGO CEM TO DISAPPEAR	RENATO B. CUBILLA ONE CITY PLANNING OFFICE	HENRY O. GARCIA YRMS	HERNANDO, D. ROBLES PRESIDENT	TWO STOREY SCHOOL BLDG. CAVITE STATE UNIVERSITY TRICE CAMPUS TRICE MARTINES CITY CAMPUS	CAVITE STATE UNIVERSITY	A/B



LOWER GROUND FOUNDATION PLAN
SCALE 1 : 150 MTS.

DRAWN BY	STRUCTL. ENGR.	ENGINEER	ENGINEERED BY	EGOBSAPPROVED	APPROVED BY	PROJECT TITLE/LOCATION	IMPLEMENTING AGENCY	SHEET NO.
						TWO STOREY SCHOOL BLDG. CAVITE STATE UNIVERSITY TRICE CAMPUS TRICE MATRES CITY CAMPUS	CAVITE STATE UNIVERSITY	S 1

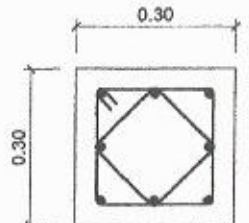
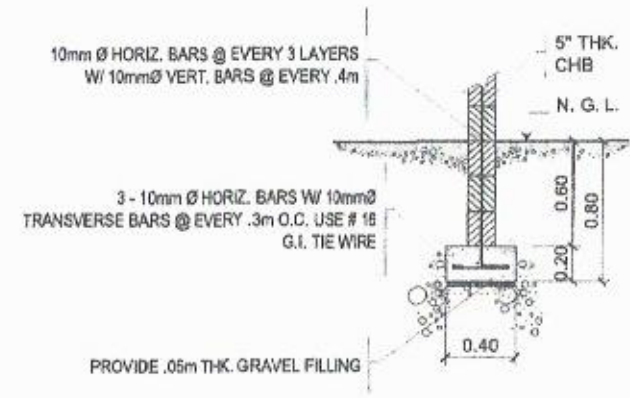


FOUNDATION PLAN
 SCALE 1 : 150 MTS.

DRAFTER E. RODEROS JR. <small>DRG</small>	STRUCT. ENGR. L. E. ROCELA <small>OCENAL</small>	END-USER NOEL A. SEDIGO <small>TS CAMPUS</small>	ENDORSED BY RENATO B. CUBILLA <small>DIRECTOR</small>	RECOMMENDATION HENRY O. GARCIA <small>VPAD</small>	APPROVED BY HERNANDO D. ROBLES <small>PRESIDENT</small>	PROJECT TITLE/LOCATION TWO STOREY SCHOOL BLDG. <small>CAVITE STATE UNIVERSITY TREET CAMPUS TREC CAMPUS</small>	IMPLEMENTING AGENCY CAVITE STATE UNIVERSITY	SHEET NO. S / 2
--	---	---	--	---	--	---	---	---------------------------

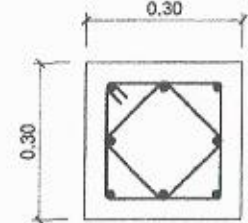
SCHEDULE OF FOOTINGS

MARK	t (m)	b (m)	w (m)	REINFORCEMENTS	REMARKS
F-1	0.30	1.60	1.60	8 - 16 mm Ø BOTH WAYS	ISOLATED
F-2	0.30	1.40	1.40	7 - 16 mm Ø BOTH WAYS	ISOLATED
F-3	0.30	1.80	1.80	10 - 16mm Ø BOTH WAYS	ISOLATED



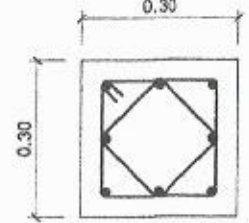
8 - 16mm Ø VERT. Bars w/ 10mm Ø LAT. TIES SP. @ 4-50mm, 4-75mm, 6-100mm, REST @ 200mm MOC

C1



4 - 16mm Ø 4 - 12mm Ø VERT. Bars w/ 10mm Ø LAT. TIES SP. @ 4-50mm, 4-75mm, 6-100mm, REST @ 200mm MOC

C2

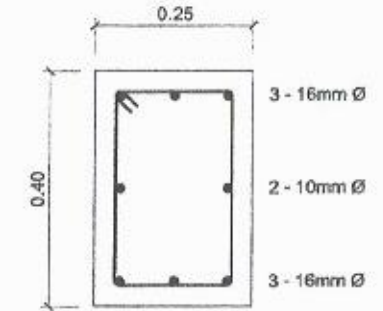


8 - 20mm Ø VERT. Bars (from Ground to 2nd Floor)
8 - 16mm Ø VERT. Bars (from 2nd Floor to Roof Beam)
w/ 10mm Ø LAT. TIES SP. @ 4-50mm, 4-75mm, 6-100mm, REST @ 200mm MOC

C3

SCHEDULE OF COLUMNS

SCALE 1 : 10 M

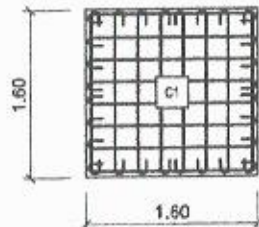
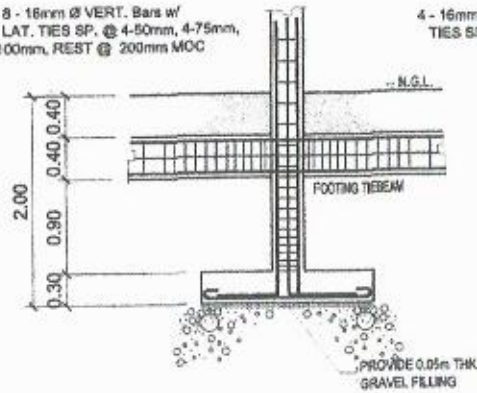


DET. SECTION OF TIE BEAM

SCALE 1 : 10 M

DRAWN BY: <i>E. RODRIGOS JR.</i>	ENGINEER: <i>L. E. ROCELA</i>	DESIGNED BY: <i>NOEL A. SEDIGO</i>	CHECKED BY: <i>RENATO B. CUBILLA</i>	SUPERVISOR: <i>HENRY O. GARCIA</i>	APPROVED BY: <i>HERNANDO D. ROBLES</i>	PROJECT TITLE & LOCATION: TWO STOREY SCHOOL BLDG. <small>CAVITE STATE UNIVERSITY - TRINIDAD CAMPUS</small>	IMPLEMENTING AGENCY: CAVITE STATE UNIVERSITY	SHEET NO.: 5 / 3
-------------------------------------	----------------------------------	---------------------------------------	---	---------------------------------------	---	--	---	---------------------

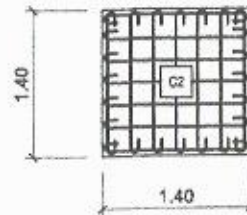
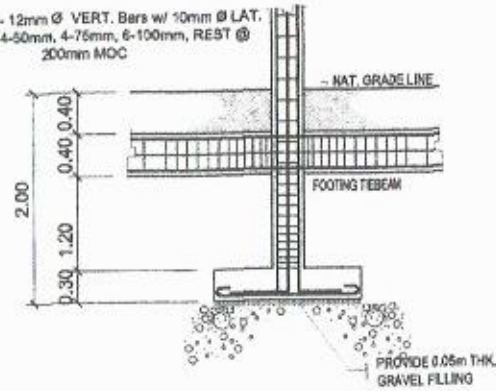
8 - 16mm Ø VERT. Bars w/
10mm Ø LAT. TIES SP. @ 4-50mm, 4-75mm,
6-100mm, REST @ 200mm MOC



FOOTING 1
8 - 16mm Ø O.C.B.W

FOOTING 1 (F1)

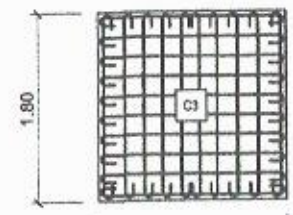
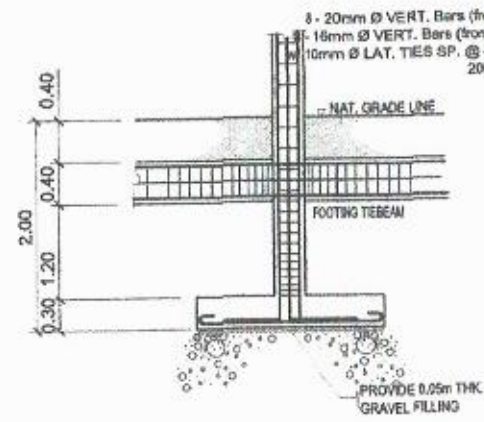
4 - 16mm Ø 4 - 12mm Ø VERT. Bars w/ 10mm Ø LAT.
TIES SP. @ 4-50mm, 4-75mm, 6-100mm, REST @
200mm MOC



FOOTING 2
7 - 16 mm Ø O.C.B.W

FOOTING 2 (F2)

8 - 20mm Ø VERT. Bars (from Footing to Upper Ground Floor)
16mm Ø VERT. Bars (from Upper Ground Floor to Roof Beam)
10mm Ø LAT. TIES SP. @ 4-50mm, 4-75mm, 6-100mm, REST @
200mm MOC

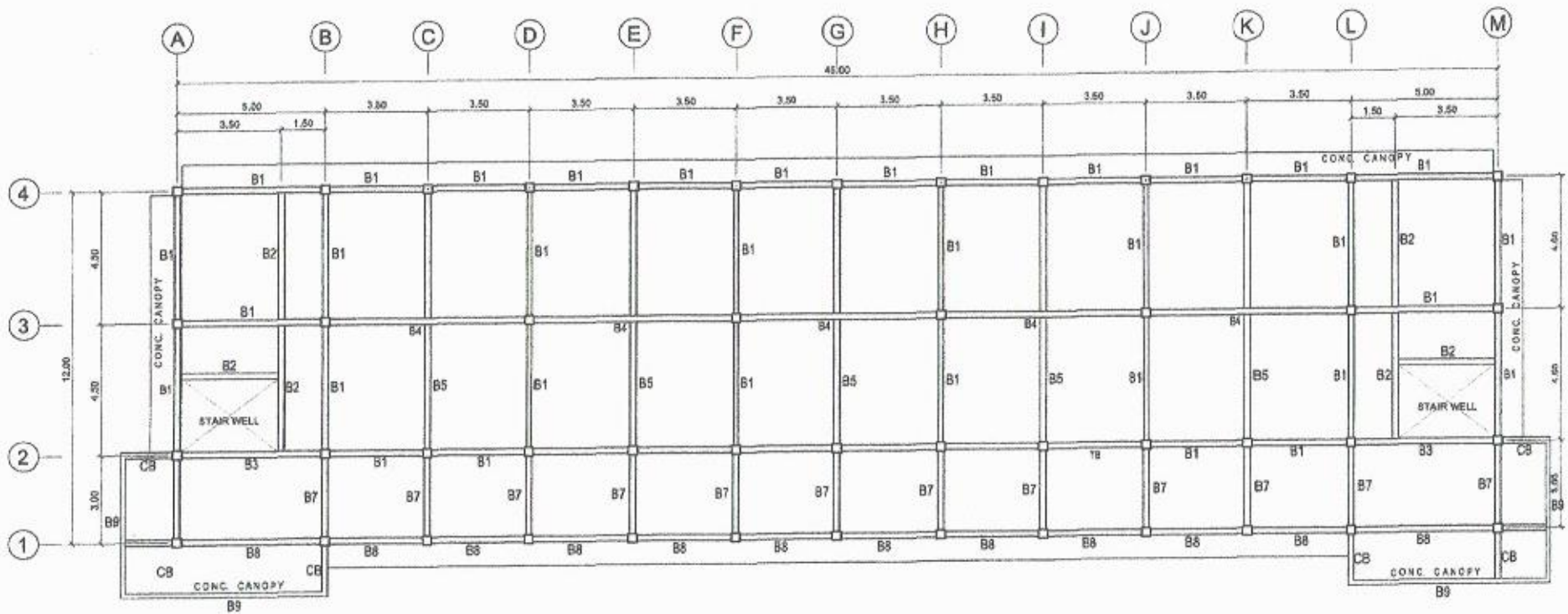


FOOTING 3
10 - 16 mm Ø O.C.B.W

FOOTING 3 (F3)

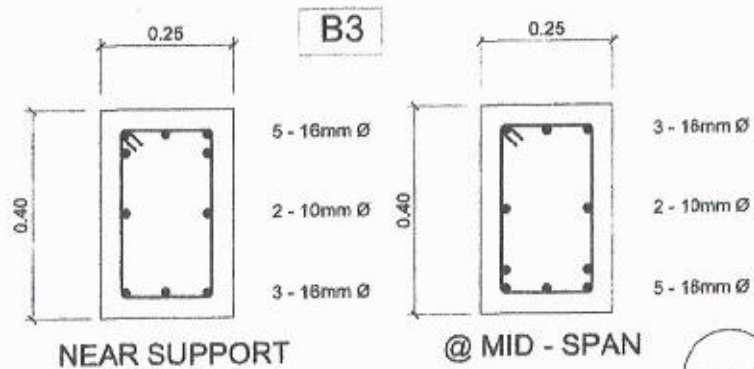
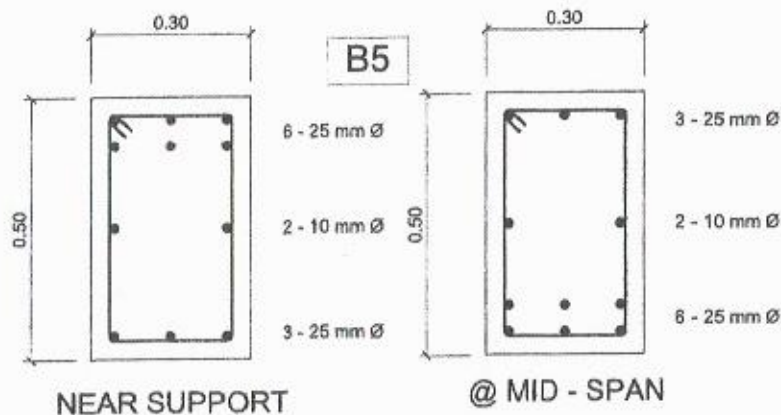
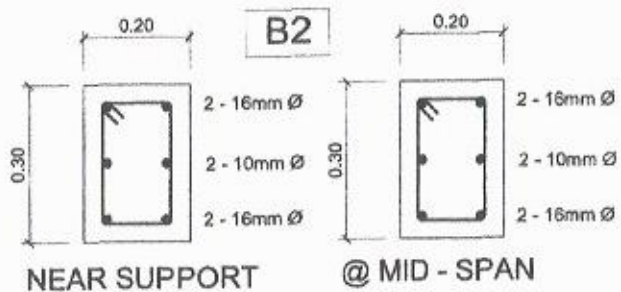
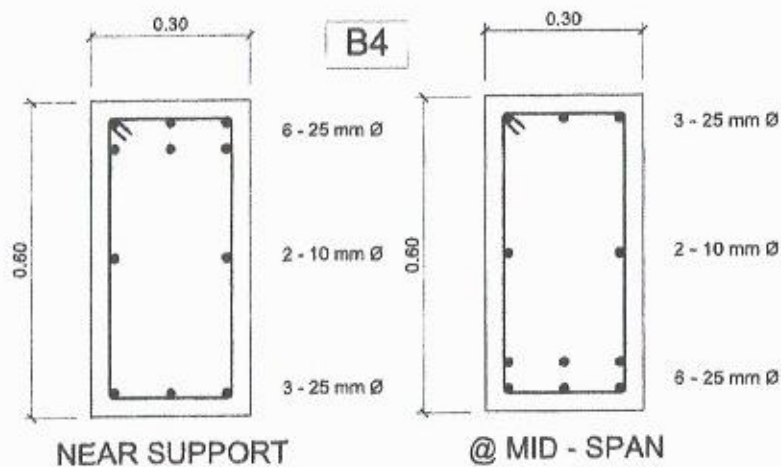
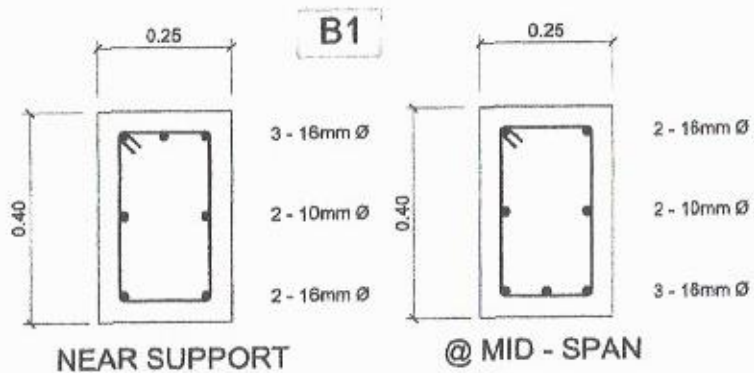
COLUMN-FOOTING DETAIL
SCALE 1:50 M.

DESIGNED BY	STRUCT. ENGR.	CHKD. USER	INCHARGE BY	AG. COORDINATOR	APPROVED BY	PROJECT TITLE / LOCATION	IMPLEMENTING AGENCY	SHEET NO.
E. RODRIGOS JR. PPU	L. E. ROCELA CSUPU	NOEL A. SEDIGO CSUPU	RENATO B. CUBILLA DIRECTOR PLANNING OFFICE	HENRY O. GARCIA VPAS	HERNANDO D. ROSLES INTEGRATOR CUPU	TWO STOREY SCHOOL BLDG. CAVITE STATE UNIVERSITY TRIGO CAMPUS TRIGO BARRICADE CITY CAMPUS	CAVITE STATE UNIVERSITY	S / 4




SECOND FLOOR BEAM PLAN
 SCALE 1 : 150 MTS.

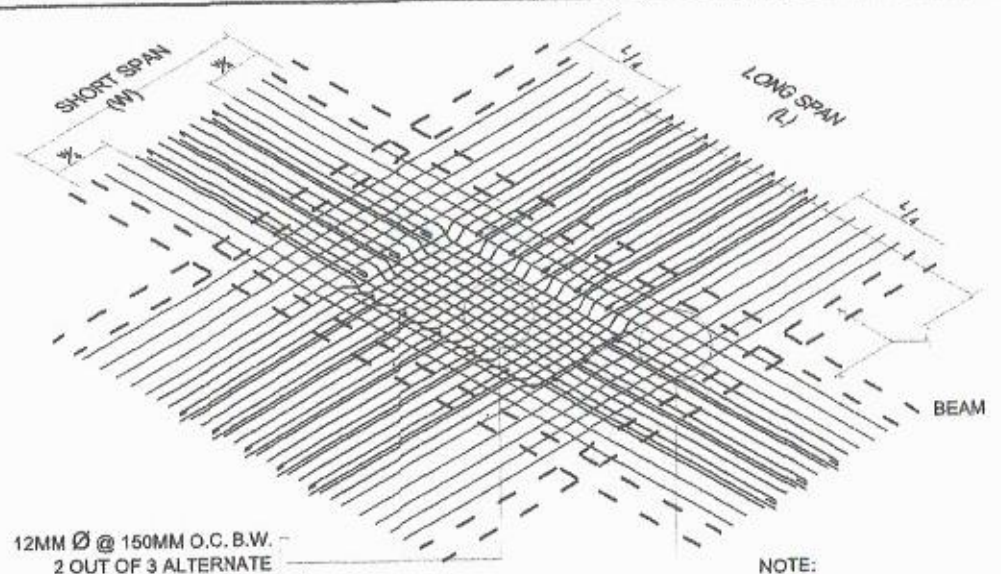
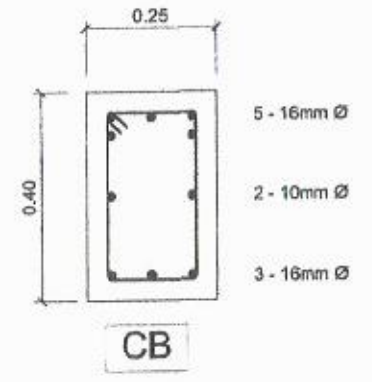
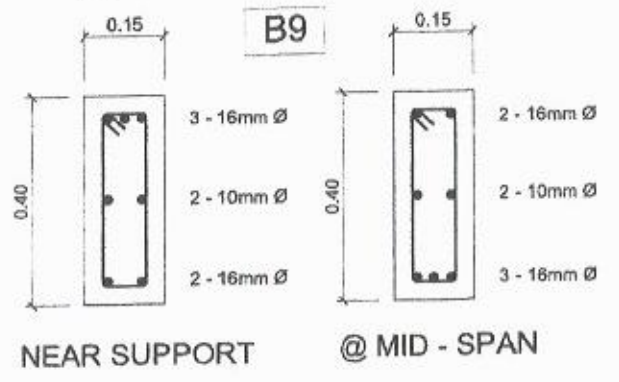
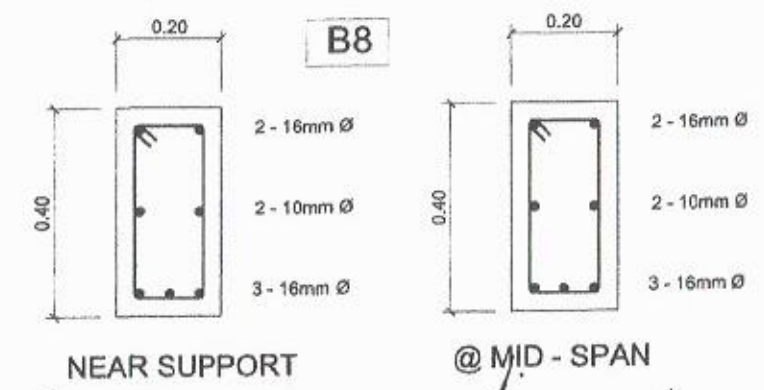
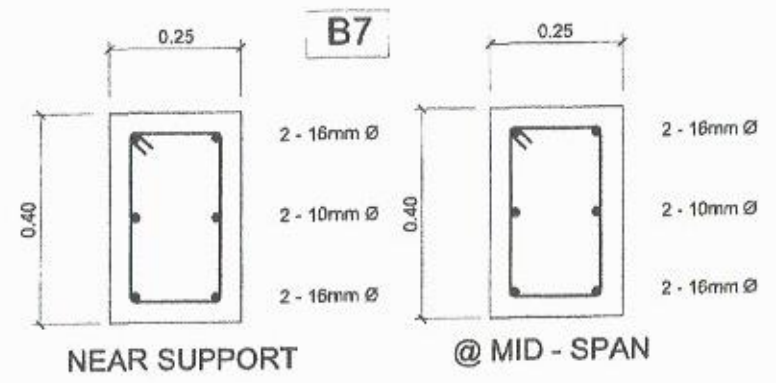
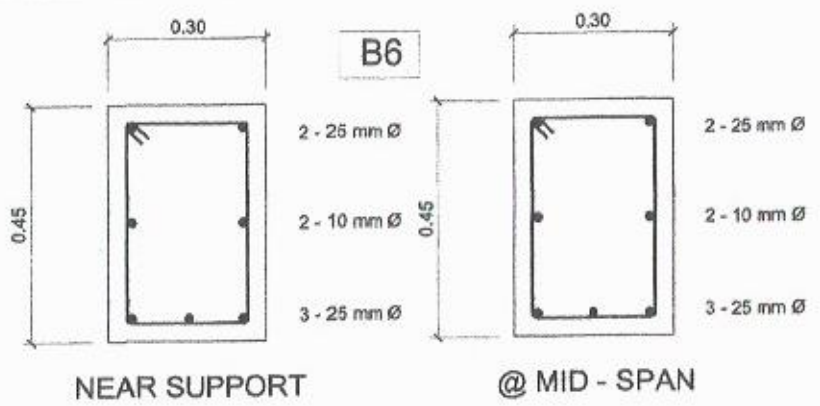
DATE BY	STRUCTL. ENGR	END USER	EMPLOYED BY	ROOMS/PERSONAL	APPROVED BY	PROJECT TITLE/LOCATION	IMPLEMENTING AGENCY	DATE
E. RODRIGOS JR. PPU	L. E. ROCELA OCEPRU	NOEL A. SEDIGO DAN	RENATO B. CUBILLA DIRECTOR / PLANNING OFFICE	HENRY O. GARCIA VP/ED	HERNANDO D. ROBLES PRESIDENT	TWO STOREY SCHOOL BLDG. CAVITE STATE UNIVERSITY - FREE CAMPUS / TRINIDAD CITY CAMPUS	CAVITE STATE UNIVERSITY	S 5



SCHEDULE OF BEAMS

SCALE 1 : 10 M

DESIGNED BY	STRUCT. ENGR.	CHKD. BY	ENDORSED BY	REGISTERED PROFESSIONAL	APPROVED BY	PROJECT TITLE / LOCATION	IMPLEMENTING AGENCY	HEET NO.
E. RODEROS JR. PEU	L. E. ROCELA DSPPU	NOELA A. SODIGO DSUPU	RENATO B. CUBILLA DIRECTOR PLANNING OFFICE	HENRY O. GARCIA VP/AS	HERNANDO. D. ROBLES PRESIDENT DSU	TWO STOREY SCHOOL BLDG. CAVITE STATE UNIVERSITY TRINIDAD CAMPUS TRINIDAD CAMPUS OFF-CAMPUS	CAVITE STATE UNIVERSITY	6 / 6

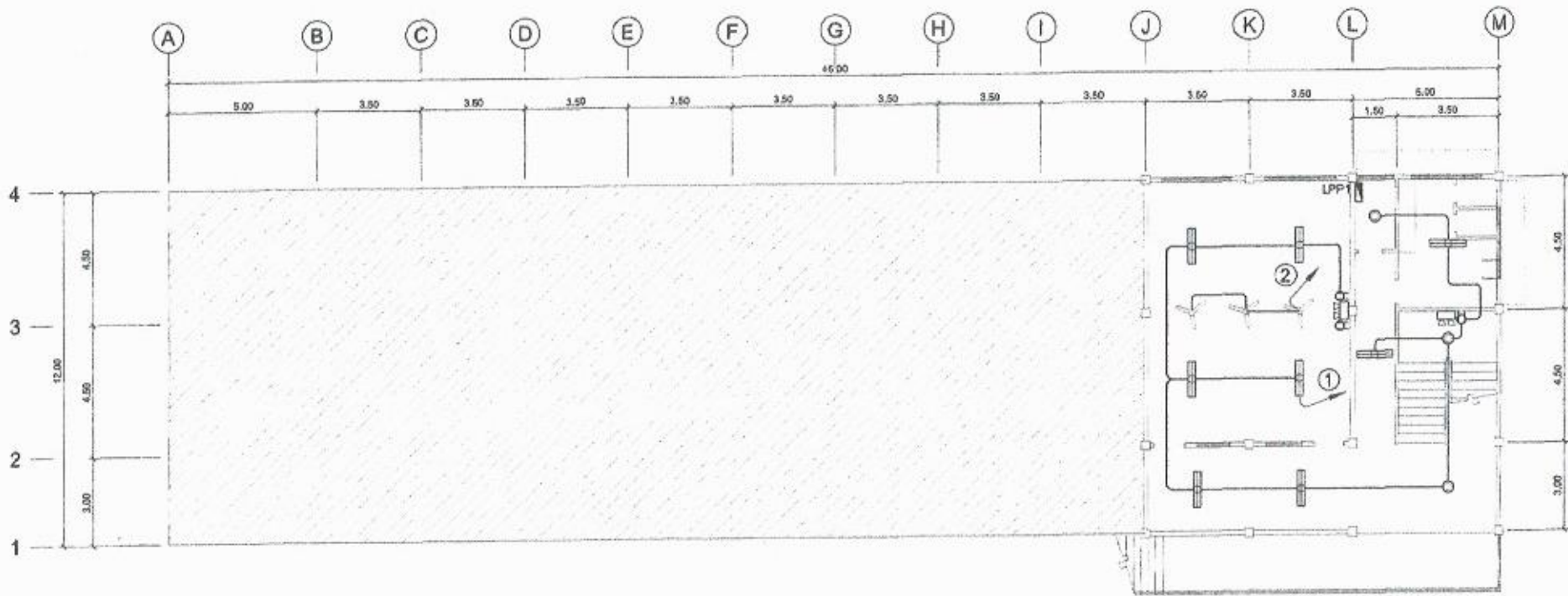


10MM Ø TEMPERATURE BARS @ 250MM O.C. B.W. THROUGHOUT THE COLUMN STRIP

NOTE: SLAB THICKNESS: S1 = 100MM

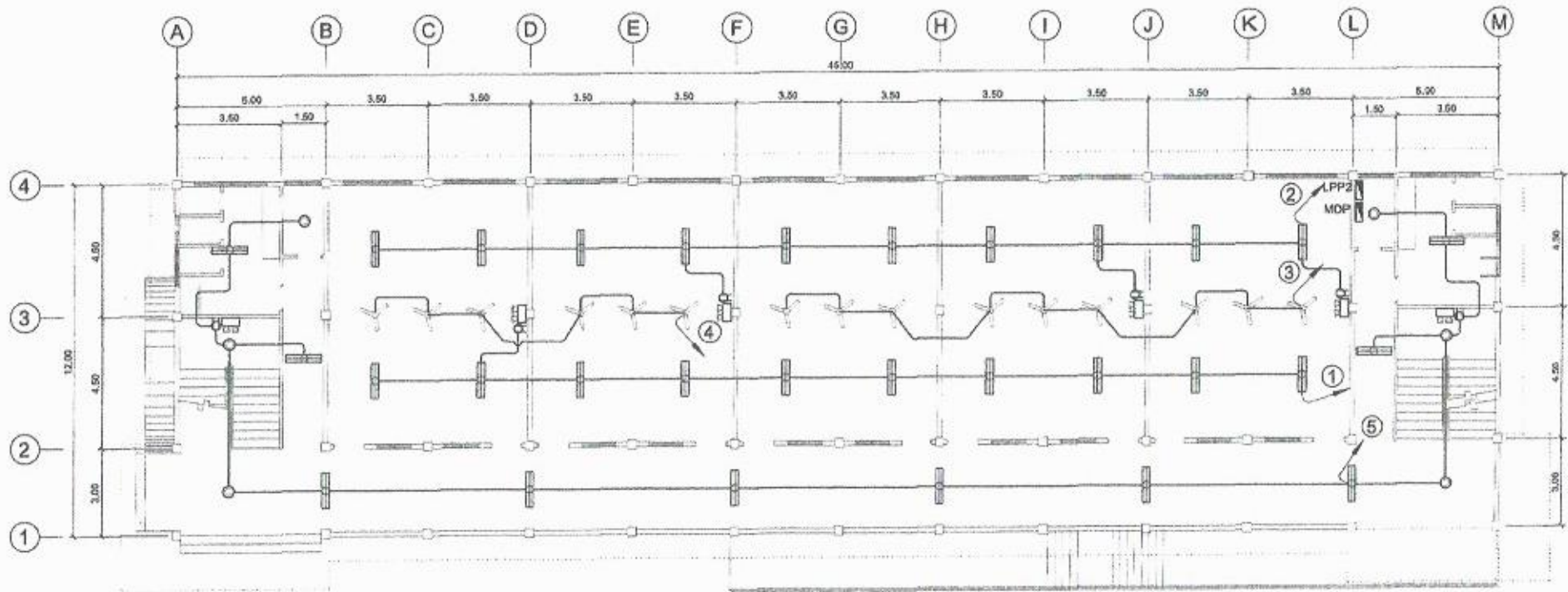
TWO - WAY SLAB DETAIL OF SLAB REINFORCEMENT

DATE	STRUC. ENGR.	ENG. USER	ENDORSED BY	PER. SUPERVISOR	APPROVED BY	PROJECT TITLE - LOCATION	IMPLEMENTING AGENCY	SHEET NO.
	E. RODRIGOS JR. PPL	L. E. ROCELA DC/PLN	NOEL A. SEDIGO SEAN	RENATO B. CUBILLA DIRECTOR PLANNING OFFICE	HENRY O. GARCIA VP/PLN	HERNANDO D. ROBLES PRESIDENT	TWO STOREY SCHOOL BLDG. CAVITE STATE UNIVERSITY - TRINIDAD CAMPUS TRINIDAD CITY CAMPUS	CAVITE STATE UNIVERSITY S / 7



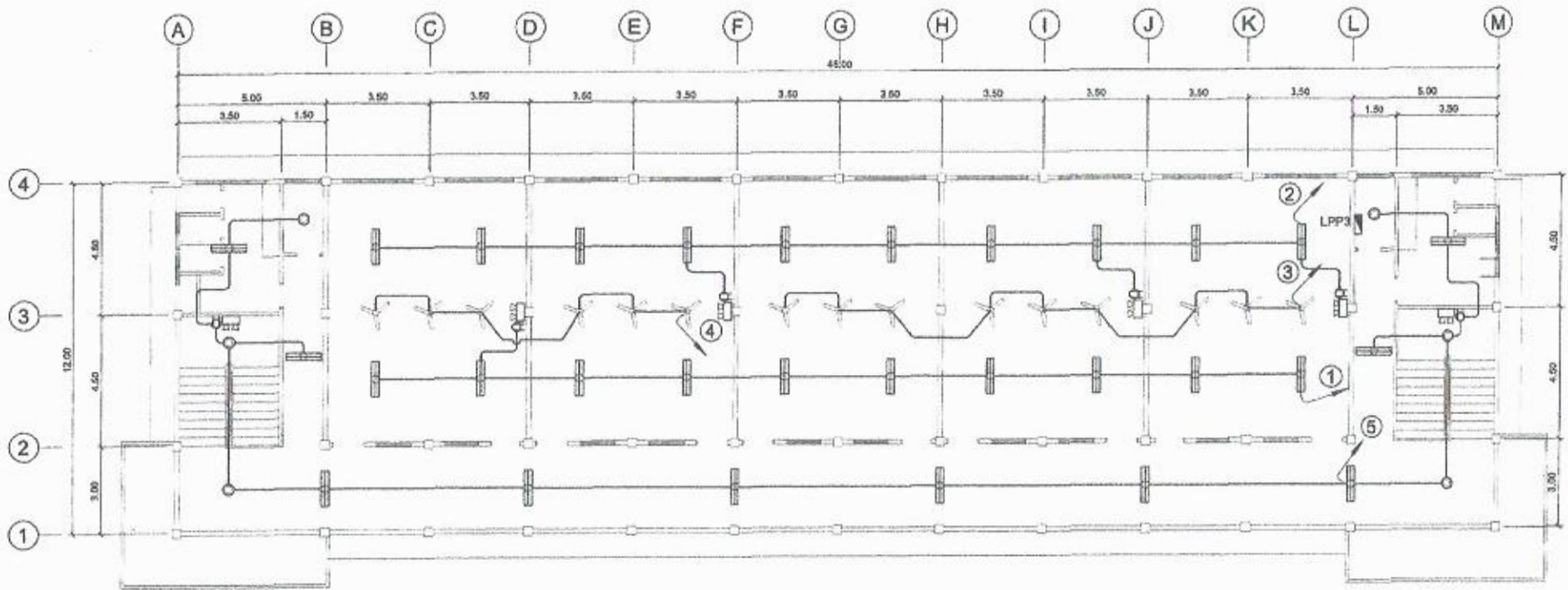
LOWER GROUND FLR. LIGHTING LAYOUT
SCALE 1:150 MTS.

DESIGNED BY	PROF. ELECT. ENGR.	END-USER	ENGINEERING BY	REGISTERED ELECTRICAL ENGINEER	APPROVED BY	PROJECT TITLE/LOCATION	IMPLEMENTING AGENCY	SHEET NO.
E. RODRIGOS JR. PE	RONALDO P. PENA PE	NOEL A. SEDIGO TECHNICAL SUPERVISOR	RENATO B. CUBILLA ENGINEER	HENRY O. GARCIA REGISTERED ELECTRICAL ENGINEER	HERNANDO D. ROBLES PRESIDENT	TWO STOREY SCHOOL BLDG. CAVITE STATE UNIVERSITY - TRINIDAD CAMPUS TRINIDAD CITY CAMPUS	CAVITE STATE UNIVERSITY	E / 1



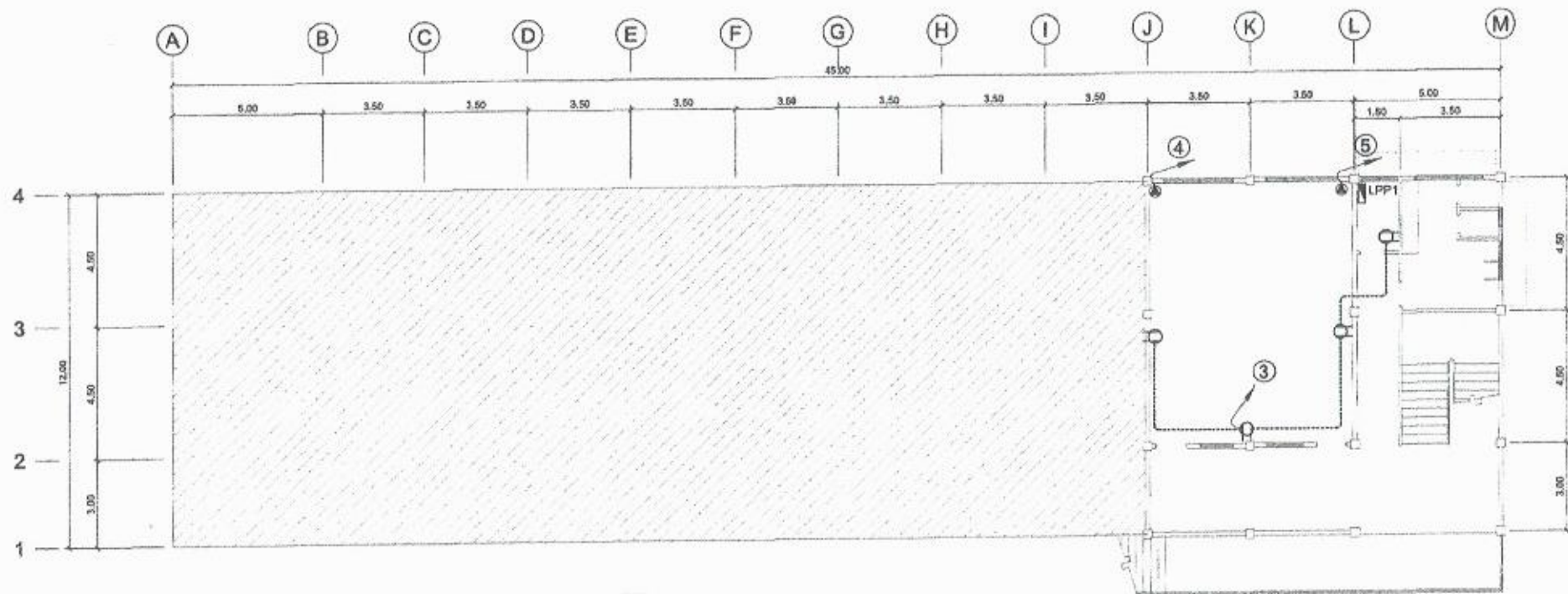
UPPER GROUND FLR. LIGHTING LAYOUT
 SCALE 1 : 150 MTS.

DADO BY <i>E. Roderos Jr.</i> E. RODEROS JR. <small>PPJ</small> <small>CEP</small>	PROF. ELECTRICAL <i>Ronald B. Peña</i> RONALD B. PEÑA <small>PPJ</small> <small>CEP</small>	CHIEF <i>Noel A. Srdigo</i> NOEL A. SRDIGO <small>PPJ</small> <small>CEP</small>	DESIGNED BY <i>Renato B. Cubilla</i> RENATO B. CUBILLA <small>PPJ</small> <small>CEP</small>	REDESIGNED BY <i>Henry D. Garcia</i> HENRY D. GARCIA <small>PPJ</small> <small>CEP</small>	APPROVED BY <i>Hernando D. Robles</i> HERNANDO D. ROBLES <small>PPJ</small> <small>CEP</small>	PROJECT TITLE / LOCATION TWO STOREY SCHOOL BLDG. <small>CAVITE STATE UNIVERSITY TRINIDAD CAMPUS</small> / <small>TRINIDAD CAMPUS CITY OF CAUPAS</small>	IMPLEMENTING AGENCY CAVITE STATE UNIVERSITY	SHEET NO. E / 2
---	--	---	---	---	---	--	---	---------------------------



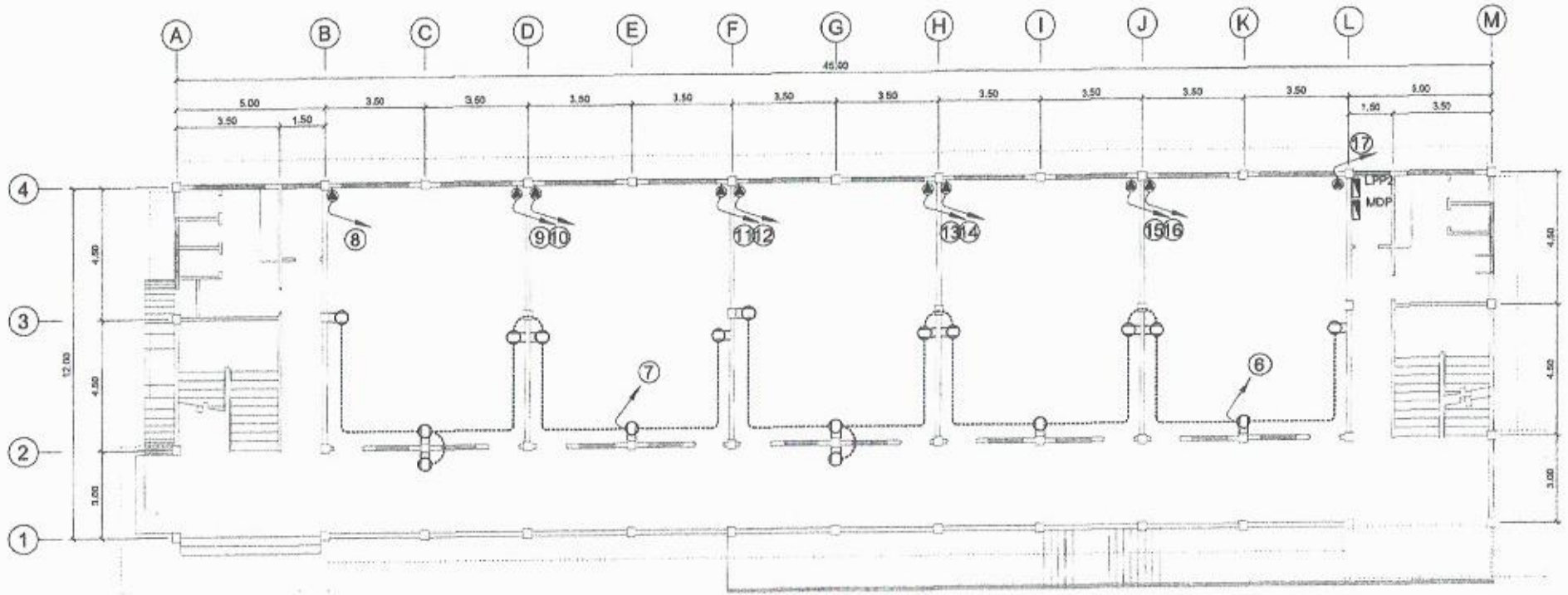
SECOND FLR. LIGHTING LAYOUT
SCALE 1 : 150 MTS.

DESIGNED BY	PROF. CONSULTANT	ENGINEER	ENDORSED BY	PRO. REGISTERED	APPROVED BY	SUBJECT TITLE LOCATION	IMPLEMENTING AGENCY	SHEET NO.
E. RODRIGOS JR. PRJ.	RONALDO PEÑA PRJ.	NOEL A. SEDIGO ENR.	RENATO S. CUBILLA DIRECTOR PLANNING OFFICE	HENRY O. GARCIA ENR.	HERNANDO D. ROBLES PRESIDENT DIV.	TWO STOREY SCHOOL BLDG. CAVITE STATE UNIVERSITY ESTATE CAMPUS TRINIDAD CITY CAMPUS	CAVITE STATE UNIVERSITY	E / 3



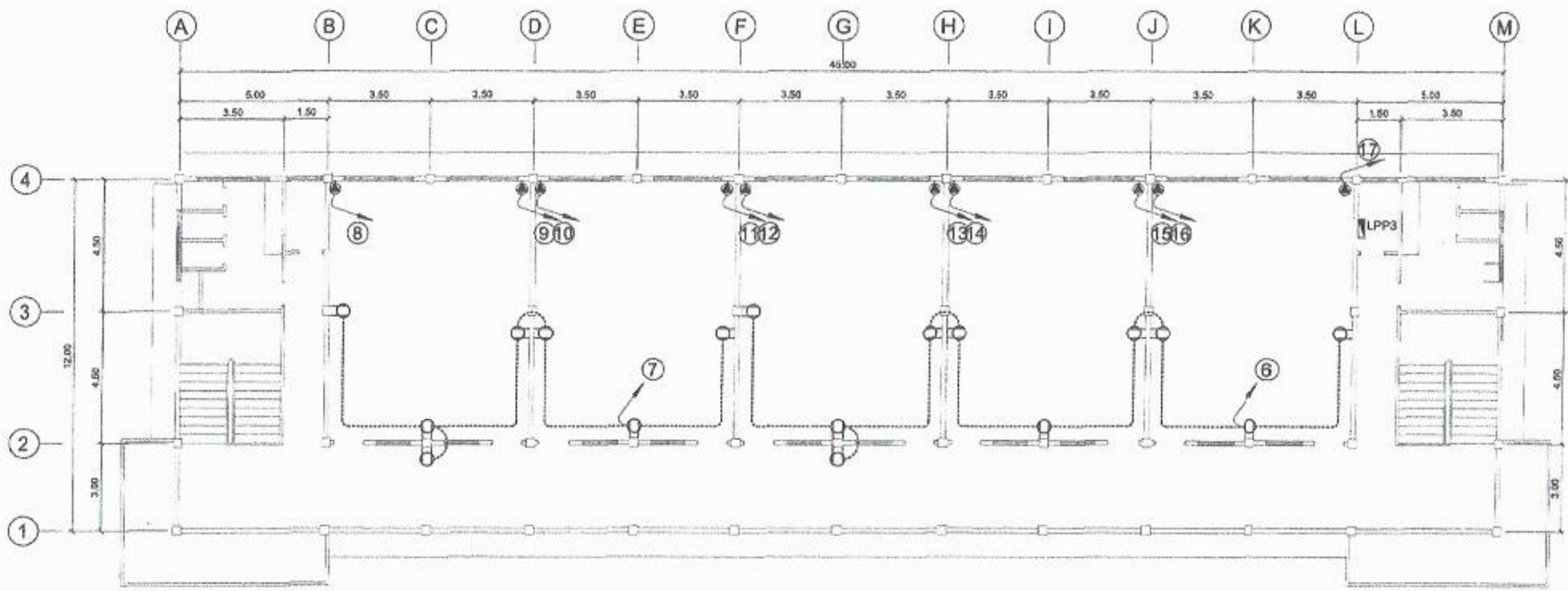
LOWER GROUND FLR. POWER LAYOUT
 SCALE 1: 160 MTS.

DESIGNED BY	PROF. ELECTRICAL ENGINEER	ENGINEER	ENDORSED BY	REGISTERED PROFESSIONAL	ADDRESS	PROJECT TITLE/LOCATION	IMPLEMENTING AGENCY	REVISION NO.
E. RODRIGOS JR. DESIGNER	RONALDO P. PEÑA PROF. ELECTRICAL ENGINEER	NOEL A. SEDIGO REGISTERED PROFESSIONAL	RENATO BUCUBILLA DIRECTOR PLANNING OFFICE	HENRY O. GARCIA REGISTERED PROFESSIONAL	HERNANDO D. ROBLES PRESIDENT	TWO STOREY SCHOOL BLDG. CAVITE STATE UNIVERSITY TRINIDAD CAMPUS TRINIDAD, MALABON CITY CAMPUS	CAVITE STATE UNIVERSITY	E/4



UPPER GROUND FLR. POWER LAYOUT
 SCALE 1 : 150 MTS.

DATE BY	PROP. DESIGNER	END-USER	ENDORSED BY	TO COMPLETION	APPROVED BY	PROJECT TITLE LOCATION	IMPLEMENTING AGENCY	SHEET NO.
E. RODRIGUEZ JR. PRJ	RONALD P. PEÑA ENR	NOEL A. SEDIGO DEAN TS CAMPUS	RENATO B. CUBILLA DIRECTOR PLANNING OFFICE	HENRY O. GARCIA PRJ	HERNANDO D. ROBLES PRESIDENT CAU	TWO STOREY SCHOOL BLDG. CAVITE STATE UNIVERSITY FREE CAMPUS TRINIDAD BAYVIEW CITY CORPUS	CAVITE STATE UNIVERSITY	E / 5



○ SECOND FLR. POWER LAYOUT
SCALE 1 : 150 MTS.

DESIGNED BY	PROF. ELECT. ENGR.	SPONSOR	APPROVED BY	RECOMMENDED BY	APPROVED BY	ENGINEER'S/TECH. LOCATION	IMPLEMENTING AGENCY	SHEET NO.
E. ROBERTO JR. PE	RONALDO PENA PE	NOEL A. SEDIGO DASH TO CAMPUS	RENATO B. CUBILLA DASH CAMPUS OFFICE	HENRY O. GARCIA DASH	HERNANDO D. ROBLES PRESIDENT CASH	TWO STOREY SCHOOL BLDG. CAVITE STATE UNIVERSITY TRICE CAMPUS TRICE WYTHEVILLE CITY CAMPUS	CAVITE STATE UNIVERSITY	E / 6

PANEL : LIGHTING PANEL 1 - LP1
 PHASE : 1
 VOLTS : 230

CABLE : 2 - 8.0 SQ. MM THW + G 5.5 SQ. MM THW
 CONDUIT : RSC, 20 MM DIA.

MAIN : 70 AT, 2P, 230V, 10 kA/C, MCCB
 ENCLOSURE : NEMA 1
 MOUNTING : SURFACE

O/C NO.	NO. OF OUTLETS	LOAD DESCRIPTION	LOAD IN			CIRCUIT PROTECTION	Size of Conductor 90 MM THW 30 MM THW	Size of Conduit in MM	Color Code
			WATTS	VOLT	AMPERES				
1	12	Lighting Outlet	1200	230	5.22	15AT, 2P, 20 KAC	2 - 2.0 + 1G 2.0	RSC, 15	1R, 1BK, 1G
2	3	Ceiling Fans	540	230	2.35	20AT, 2P, 10 KAC	2 - 3.5 + 1G 2.0	RSC, 15	1R, 1BK, 1G
3	4	Convenience Outlet	720	230	3.13	20AT, 2P, 10 KAC	2 - 3.5 + 1G 2.0	RSC, 15	1R, 1BK, 1G
4	1	ACU Outlet	2760	230	12.00	30AT, 2P, 10 KAC	2 - 5.5 + 1G 3.5	RSC, 20	1R, 1BK, 1G
5	1	ACU Outlet	2760	230	12.00	30AT, 2P, 10 KAC	2 - 5.5 + 1G 3.5	RSC, 20	1R, 1BK, 1G
6		SPARE							
7		SPARE							
8		SPARE							
9		SPARE							
10		SPARE							
TOTAL			7980	230	34.70	70AT, 2P, 10 KAC	2 - 8.0 + 1G 5.5	RSC, 20	1R, 1BK, 1G

MAIN FEEDER and CURRENT PROTECTION COMPUTATION

$I_{TL} = \frac{12470 \cdot (250 \times 100) \cdot CF}{1000} = 37.70$ Amperes

USE : 2 - 8.0 SQMM THW (27.70A / 60A) + 1 - 5.5 SQMM THW IN 20 MM DIA. RSC

NOTE : $I_{TS} = \frac{12470 \cdot (250 \times 100) \cdot CF}{1000} = 54.70$ Amperes

USE : 70 AT, 10P AF, 2P, 230V, 10 kA/C, CB

This Electrical Design is good only for the above connected loads. Any additional electrical load connection in the future is not allowed. Except redesign of electrical load system will be done.

PANEL : LIGHTING PANEL 2 - LP2
 PHASE : 1
 VOLTS : 230

CABLE : 2 - 8.0 SQ. MM THW + G 30 SQ MM THW
 CONDUIT : RSC, 50 MM DIA.

MAIN : 175 AT, 2P, 230V, 20 kA/C, MCCB
 ENCLOSURE : NEMA 1
 MOUNTING : SURFACE

O/C NO.	NO. OF OUTLETS	LOAD DESCRIPTION	LOAD IN			CIRCUIT PROTECTION	Size of Conductor 90 MM THW 30 MM THW	Size of Conduit in MM	Color Code
			WATTS	VOLT	AMPERES				
1	11	Lighting Outlet	1100	230	4.78	15AT, 2P, 20 KAC	2 - 2.0 + 1G 2.0	RSC, 15	1R, 1BK, 1G
2	13	Lighting Outlet	1300	230	5.65	15AT, 2P, 20 KAC	2 - 2.0 + 1G 2.0	RSC, 15	1R, 1BK, 1G
3	9	Ceiling Fans	1620	230	7.04	20AT, 2P, 20 KAC	2 - 3.5 + 1G 2.0	RSC, 15	1R, 1BK, 1G
4	6	Ceiling Fans	1080	230	4.70	20AT, 2P, 20 KAC	2 - 3.5 + 1G 2.0	RSC, 15	1R, 1BK, 1G
5	18	Lighting Outlet	1800	230	7.83	15AT, 2P, 20 KAC	2 - 2.0 + 1G 2.0	RSC, 15	1R, 1BK, 1G
6	10	Convenience Outlet	1800	230	7.83	20AT, 2P, 20 KAC	2 - 3.5 + 1G 2.0	RSC, 15	1R, 1BK, 1G
7	7	Convenience Outlet	1260	230	5.48	20AT, 2P, 20 KAC	2 - 3.5 + 1G 2.0	RSC, 15	1R, 1BK, 1G
8	1	ACU Outlet	2760	230	12.00	30AT, 2P, 20 KAC	2 - 5.5 + 1G 3.5	RSC, 20	1R, 1BK, 1G
9	1	ACU Outlet	2760	230	12.00	30AT, 2P, 20 KAC	2 - 5.5 + 1G 3.5	RSC, 20	1R, 1BK, 1G
10	1	ACU Outlet	2760	230	12.00	30AT, 2P, 20 KAC	2 - 5.5 + 1G 3.5	RSC, 20	1R, 1BK, 1G
11	1	ACU Outlet	2760	230	12.00	30AT, 2P, 20 KAC	2 - 5.5 + 1G 3.5	RSC, 20	1R, 1BK, 1G
12	1	ACU Outlet	2760	230	12.00	30AT, 2P, 20 KAC	2 - 5.5 + 1G 3.5	RSC, 20	1R, 1BK, 1G
13	1	ACU Outlet	2760	230	12.00	30AT, 2P, 20 KAC	2 - 5.5 + 1G 3.5	RSC, 20	1R, 1BK, 1G
14	1	ACU Outlet	2760	230	12.00	30AT, 2P, 20 KAC	2 - 5.5 + 1G 3.5	RSC, 20	1R, 1BK, 1G
15	1	ACU Outlet	2760	230	12.00	30AT, 2P, 20 KAC	2 - 5.5 + 1G 3.5	RSC, 20	1R, 1BK, 1G
16	1	ACU Outlet	2760	230	12.00	30AT, 2P, 20 KAC	2 - 5.5 + 1G 3.5	RSC, 20	1R, 1BK, 1G
17	1	ACU Outlet	2760	230	12.00	30AT, 2P, 20 KAC	2 - 5.5 + 1G 3.5	RSC, 20	1R, 1BK, 1G
18		SPARE							
19		SPARE							
20		SPARE							
TOTAL			27540	230	143.30	175AT, 2P, 20 KAC	2 - 8.0 + 1G 3.0	RSC, 50	1R, 1BK, 1G

MAIN FEEDER and CURRENT PROTECTION COMPUTATION

$I_{TL} = \frac{135120 \cdot (250 \times 100) \cdot CF}{1000} = 133.04$ Amperes

USE : 2 - 8.0 SQMM THW (133.04A / 100A) + 1 - 30 SQMM THW IN 50 MM DIA. RSC

NOTE : $I_{TS} = \frac{135120 \cdot (250 \times 100) \cdot CF}{1000} = 154.54$ Amperes

USE : 175 AT, 22P AF, 2P, 230V, 20 kA/C, CB

This Electrical Design is good only for the above connected loads. Any additional electrical load connection in the future is not allowed. Except redesign of electrical load system will be done.

PANEL : LIGHTING PANEL 3 - LP3
 PHASE : 1
 VOLTS : 230

CABLE : 2 - 8.0 SQ. MM THW + G 30 SQ MM THW
 CONDUIT : RSC, 50 MM DIA.

MAIN : 175 AT, 2P, 230V, 20 kA/C, MCCB
 ENCLOSURE : NEMA 1
 MOUNTING : SURFACE

O/C NO.	NO. OF OUTLETS	LOAD DESCRIPTION	LOAD IN			CIRCUIT PROTECTION	Size of Conductor 90 MM THW 30 MM THW	Size of Conduit in MM	Color Code
			WATTS	VOLT	AMPERES				
1	11	Lighting Outlet	1100	230	4.78	15AT, 2P, 20 KAC	2 - 2.0 + 1G 2.0	RSC, 15	1R, 1BK, 1G
2	13	Lighting Outlet	1300	230	5.65	15AT, 2P, 20 KAC	2 - 2.0 + 1G 2.0	RSC, 15	1R, 1BK, 1G
3	9	Ceiling Fans	1620	230	7.04	20AT, 2P, 20 KAC	2 - 3.5 + 1G 2.0	RSC, 15	1R, 1BK, 1G
4	6	Ceiling Fans	1080	230	4.70	20AT, 2P, 20 KAC	2 - 3.5 + 1G 2.0	RSC, 15	1R, 1BK, 1G
5	18	Lighting Outlet	1800	230	7.83	15AT, 2P, 20 KAC	2 - 2.0 + 1G 2.0	RSC, 15	1R, 1BK, 1G
6	10	Convenience Outlet	1800	230	7.83	20AT, 2P, 20 KAC	2 - 3.5 + 1G 2.0	RSC, 15	1R, 1BK, 1G
7	7	Convenience Outlet	1260	230	5.48	20AT, 2P, 20 KAC	2 - 3.5 + 1G 2.0	RSC, 15	1R, 1BK, 1G
8	1	ACU Outlet	2760	230	12.00	30AT, 2P, 20 KAC	2 - 5.5 + 1G 3.5	RSC, 20	1R, 1BK, 1G
9	1	ACU Outlet	2760	230	12.00	30AT, 2P, 20 KAC	2 - 5.5 + 1G 3.5	RSC, 20	1R, 1BK, 1G
10	1	ACU Outlet	2760	230	12.00	30AT, 2P, 20 KAC	2 - 5.5 + 1G 3.5	RSC, 20	1R, 1BK, 1G
11	1	ACU Outlet	2760	230	12.00	30AT, 2P, 20 KAC	2 - 5.5 + 1G 3.5	RSC, 20	1R, 1BK, 1G
12	1	ACU Outlet	2760	230	12.00	30AT, 2P, 20 KAC	2 - 5.5 + 1G 3.5	RSC, 20	1R, 1BK, 1G
13	1	ACU Outlet	2760	230	12.00	30AT, 2P, 20 KAC	2 - 5.5 + 1G 3.5	RSC, 20	1R, 1BK, 1G
14	1	ACU Outlet	2760	230	12.00	30AT, 2P, 20 KAC	2 - 5.5 + 1G 3.5	RSC, 20	1R, 1BK, 1G
15	1	ACU Outlet	2760	230	12.00	30AT, 2P, 20 KAC	2 - 5.5 + 1G 3.5	RSC, 20	1R, 1BK, 1G
16	1	ACU Outlet	2760	230	12.00	30AT, 2P, 20 KAC	2 - 5.5 + 1G 3.5	RSC, 20	1R, 1BK, 1G
17	1	ACU Outlet	2760	230	12.00	30AT, 2P, 20 KAC	2 - 5.5 + 1G 3.5	RSC, 20	1R, 1BK, 1G
18		SPARE							
19		SPARE							
20		SPARE							
TOTAL			17560	230	161.30	175AT, 2P, 20 KAC	2 - 8.0 + 1G 3.0	RSC, 50	1R, 1BK, 1G

MAIN FEEDER and CURRENT PROTECTION COMPUTATION

$I_{TL} = \frac{135120 \cdot (250 \times 100) \cdot CF}{1000} = 133.04$ Amperes

USE : 2 - 8.0 SQMM THW (133.04A / 100A) + 1 - 30 SQMM THW IN 50 MM DIA. RSC

NOTE : $I_{TS} = \frac{135120 \cdot (250 \times 100) \cdot CF}{1000} = 154.54$ Amperes

USE : 175 AT, 22P AF, 2P, 230V, 20 kA/C, CB

This Electrical Design is good only for the above connected loads. Any additional electrical load connection in the future is not allowed. Except redesign of electrical load system will be done.

PANEL : MAIN DISTRIBUTION PANEL (MDP)
 PHASE : 1
 VOLTS : 230

CABLE : 2 - 80.0 SQ. MM THW + G 30 SQ MM THW
 CONDUIT : RSC, 50 MM DIA.

MAIN : 300 AT, 2P, 230V, 20 kA/C, MCCB
 ENCLOSURE : NEMA 1
 MOUNTING : SURFACE

O/C NO.	PANEL CODE	PANEL DESCRIPTION	LOAD IN			CIRCUIT PROTECTION	Size of Conductor 90 MM THW 30 MM THW	Size of Conduit in MM	Color Code
			WATTS	VOLT	AMPERES				
1	LP1	LIGHTING PANEL 1	7980	230	34.70	70AT, 2P, 10 KAC	2 - 8.0 + 1G 5.5	RSC, 20	1R, 1BK, 1G
2	LP2	LIGHTING PANEL 2	27540	230	143.30	175AT, 2P, 20 KAC	2 - 8.0 + 1G 3.0	RSC, 50	1R, 1BK, 1G
3	LP3	LIGHTING PANEL 3	17560	230	161.30	175AT, 2P, 20 KAC	2 - 8.0 + 1G 3.0	RSC, 50	1R, 1BK, 1G
4		SPARE							
5		SPARE							
6		SPARE							
TOTAL			43100	230	361.30				

MAIN FEEDER and CURRENT PROTECTION COMPUTATION

$I_{TL} = \frac{138120 \cdot (250 \times 100) \cdot CF}{1000} = 288.04$ Amperes

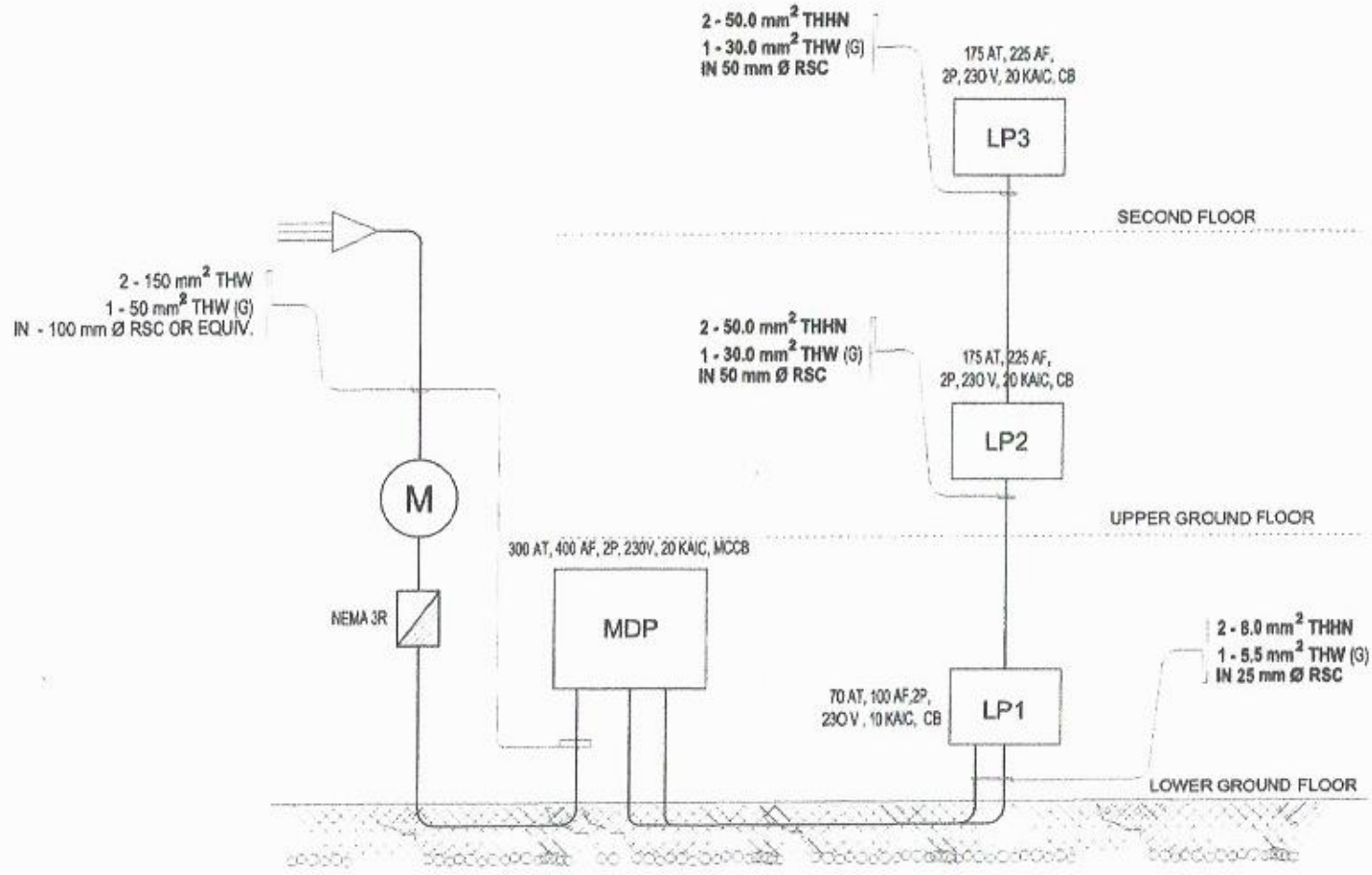
USE : 2 - 80.0 SQMM THW + 1 - 30 SQMM THW IN 50 MM DIA. RSC

NOTE : $I_{TS} = \frac{138120 \cdot (250 \times 100) \cdot CF}{1000} = 288.04$ Amperes

USE : 300 AT, 40P AF, 2P, 230V, 20 kA/C, MCCB

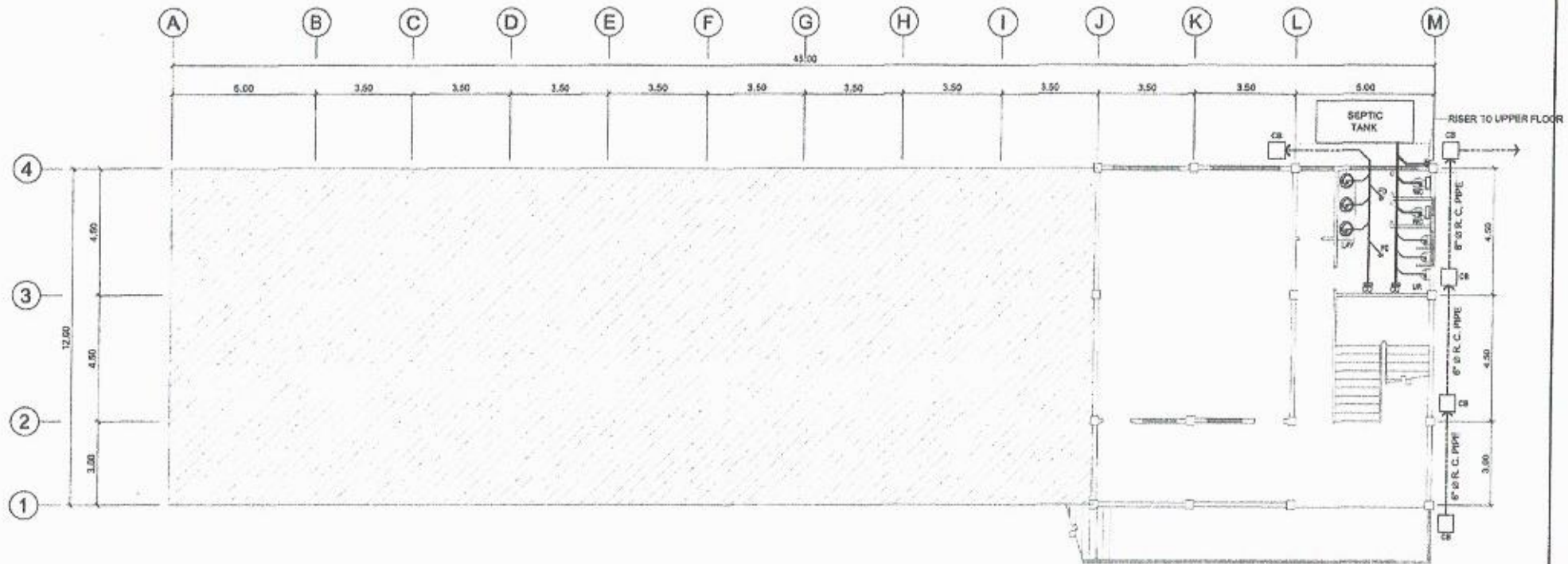
This Electrical Design is good only for the above connected loads. Any additional electrical load connection in the future is not allowed. Except redesign of electrical load system will be done.

DESIGNED BY E. RODEROS JR. PRJ	PROF. ELECTRICAL ENGINEER RONALD B. PENA ENR	CHIEF ENGINEER NOEL A. SEDIGO TC COMPLER	DESIGNED BY RENATO B. CUBILLA DESIGNER PRJ/ENR OFFICE	RECOMMENDATION HENRY O. GARCIA CHECKER	APPROVED BY HERNANDO D. ROBLES ENR	PROJECT TITLE / LOCATION TWO STOREY SCHOOL BLDG. CAVITE STATE UNIVERSITY TRINIDAD CAMPUS TRINIDAD CITY, CAVITE	IMPLEMENTING AGENCY CAVITE STATE UNIVERSITY	SHEET NO. E / 7
--------------------------------------	--	--	--	--	--	---	--	--------------------



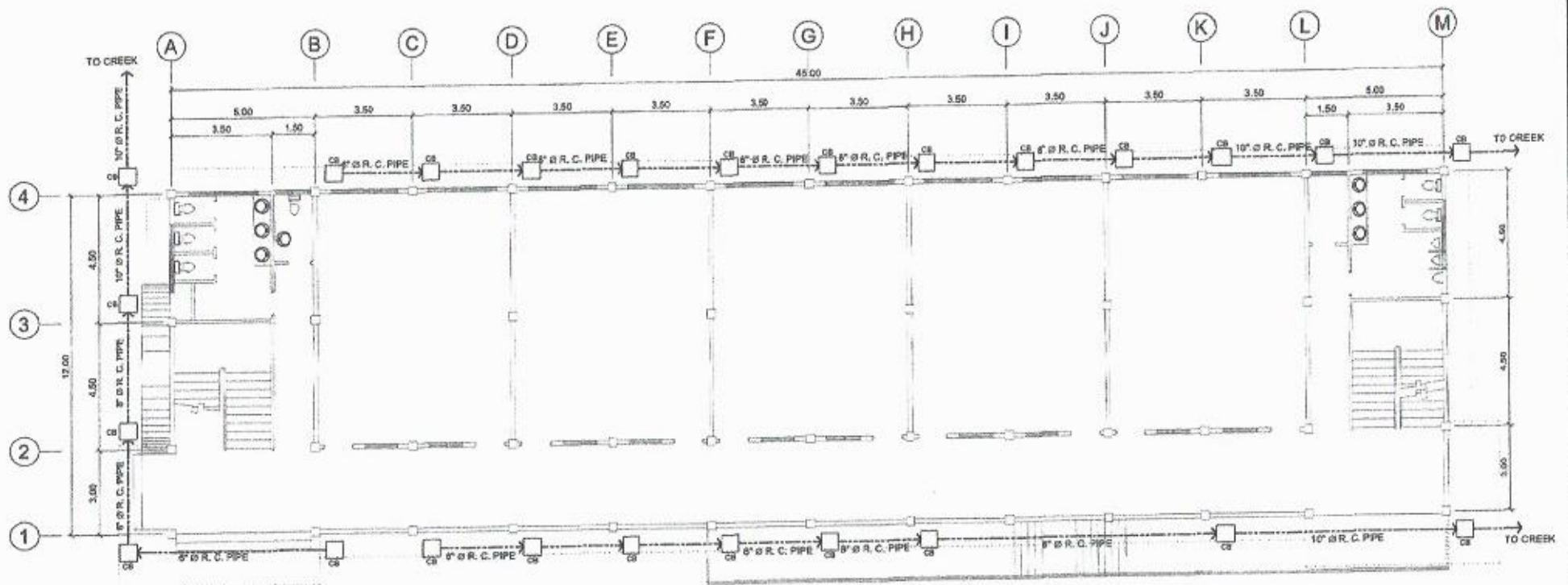
SINGLE LINE DIAGRAM

CADD BY <i>E. Roderos Jr.</i> E. RODEROS JR. <small>PEU</small>	PROJ. ELECT. ENGR. <i>Ronald P. Pena</i> RONALD P. PEÑA <small>PEU</small>	ENG. USER <i>Noel A. Sedigo</i> NOEL A. SEDIGO <small>CELAN</small>	SUPERVISOR BY <i>Renato B. Cubilla</i> RENATO B. CUBILLA <small>DIRECTOR, PLANNING OFFICE</small>	RECOMMENDED BY <i>Henry O. Garcia</i> HENRY O. GARCIA <small>WEEK</small>	APPROVED BY <i>Hernando D. Robles</i> HERNANDO D. ROBLES <small>PROFESSOR</small>	PROJECT TITLE/LOCATION TWO STOREY SCHOOL BLDG. <small>CAVITE STATE UNIVERSITY TRINITY CAMPUS TRINITY HATRED CITY CAMPUS</small>	IMPLEMENTING AGENCY CAVITE STATE UNIVERSITY	SHEET NO. E <small>8</small>
---	--	---	---	---	---	--	---	---



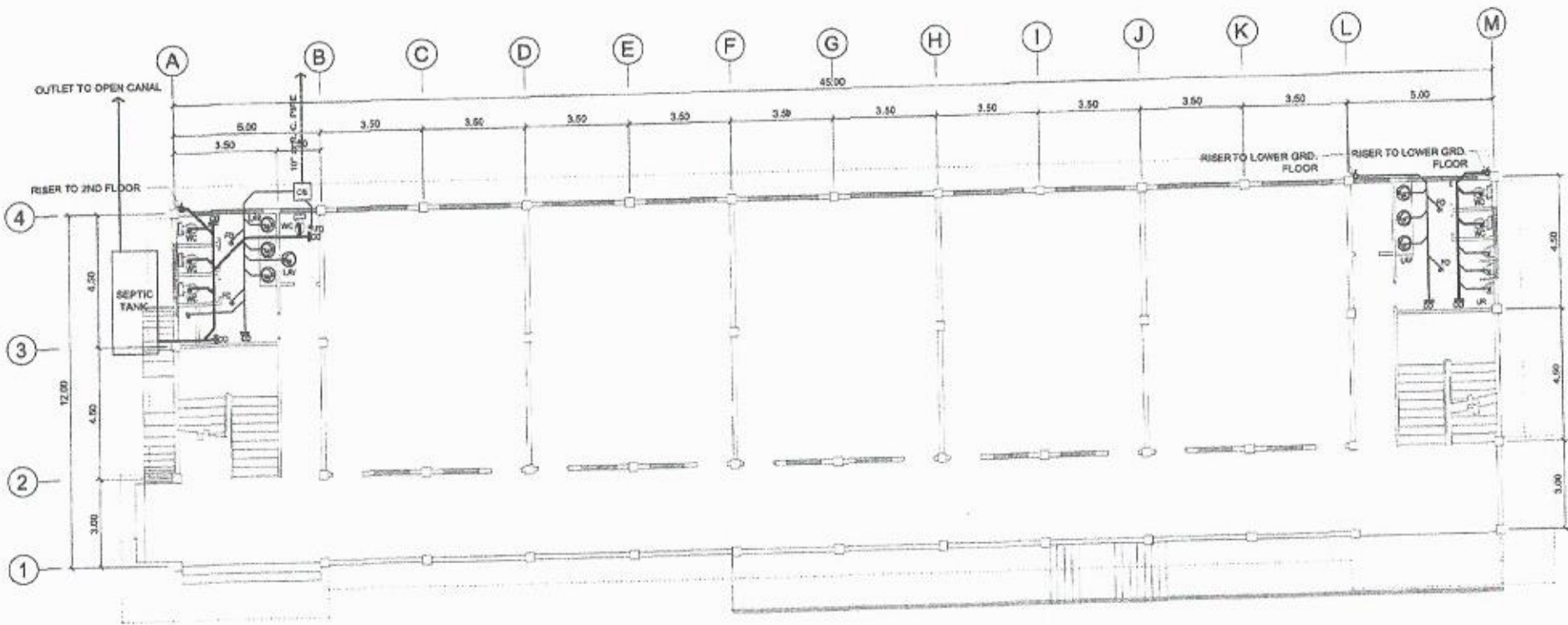

LOWER GROUND FLOOR PLAN
 SCALE 1 : 150 MTS.

CADD BY	REGISTERED MASTER PLANNER	ENGINEER	ENDORSED BY	REGISTERED ARCHITECT	APPROVED BY	PROJECT TITLE/LOCATION	IMPLEMENTING AGENCY	SHEET NO.
E. RODEROS JR. P/U	S. B. BAYOT JR. P/U	NOEL A. SEDIGO P/U	RENATO B. CUBILLA OFFICER PLANNING OFFICE	HENRY O. GARCIA P/AR	HERNANDO, D. ROBLES PRESIDENT	TWO STOREY SCHOOL BLDG. CAVITE STATE UNIVERSITY TRICE CAMPUS TRICE MAYRES CITY CAMPUS	CAVITE STATE UNIVERSITY	P 1



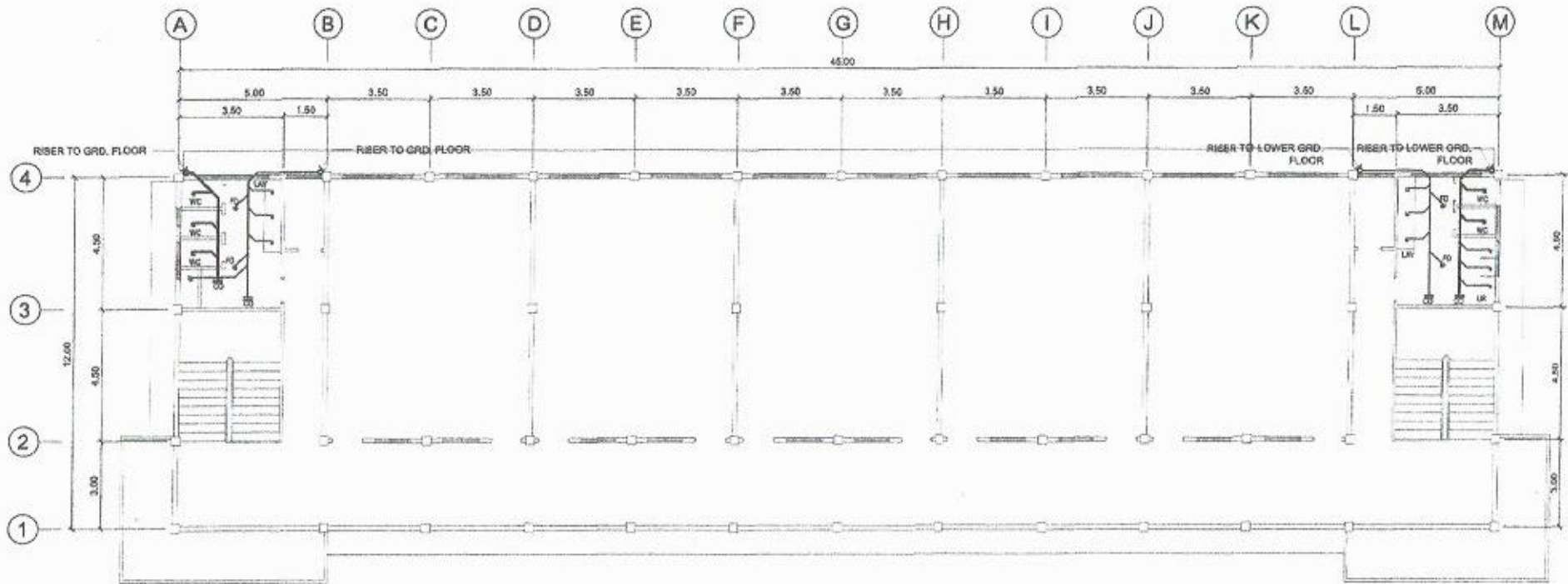

STORM DRAINAGE LAYOUT
 SCALE 1 : 150 MTS.

CALLD BY	REGISTERED DESIGNER	DESIGNER	ENDORSED BY	REGISTERED PROFESSIONAL	APPROVED BY	PROJECT TITLE / LOCATION	SPONSORING AGENCY	DATE
E. RODEROS JR. PRV	S. B. BAYOT JR. PRV	NOEL A. SEDIGO DESIGNER	RENATO B. CUBILLA DIRECTOR PLANNING OFFICE	HENRY O. GARCIA PRV	HERNANDO, D. ROBLES DESIGNER	TWO STOREY SCHOOL BLDG. CAVITE STATE UNIVERSITY TRECE CAMPUS TRECE MARTINES CITY CAMPUS	CAVITE STATE UNIVERSITY	P / 2



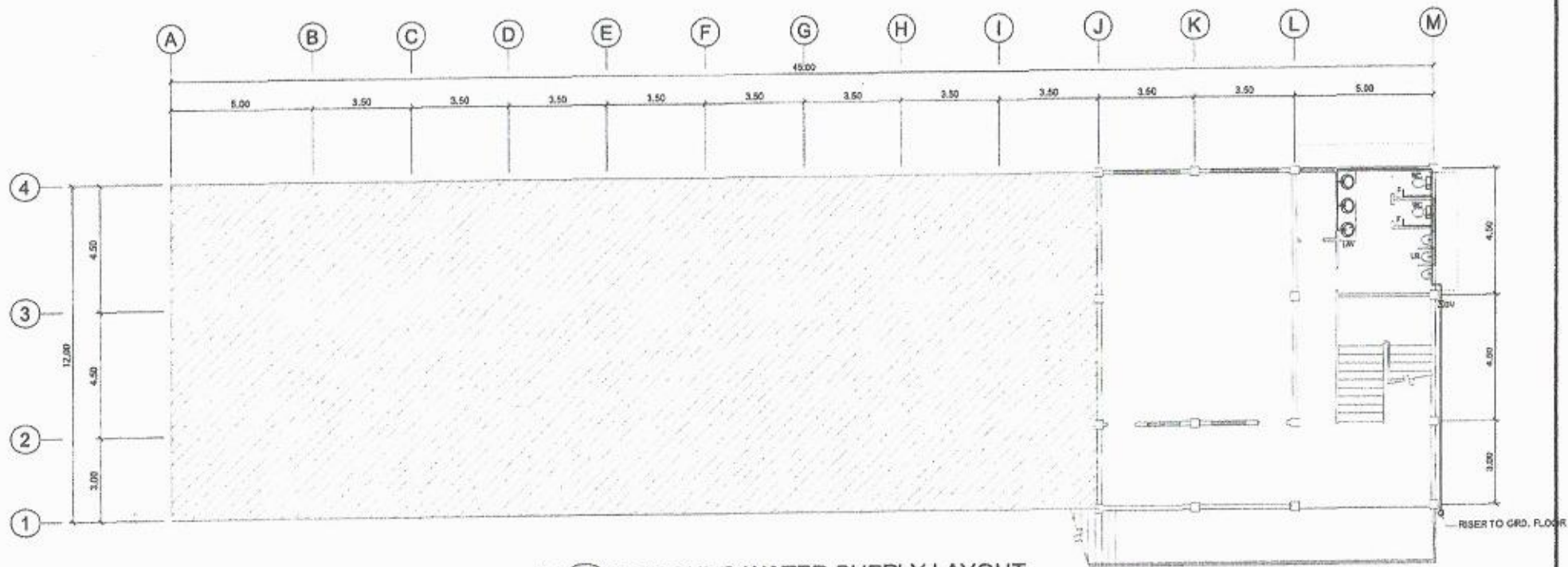
UPPER GROUND SAN. SEWER LAYOUT
 SCALE 1:150 MTS.

DADO BY: <i>E. ROBEROS JR.</i> E. ROBEROS JR. <small>PLM</small>	REGISTERED MASTER PLUMBER S. B. BAYOT JR. <small>PLM</small>	END-USER: <i>NOEL A. SEDIGO</i> NOEL A. SEDIGO <small>DEAN</small>	ENGINEERED BY: <i>RENATO B. CUBILLA</i> RENATO B. CUBILLA <small>REGISTERED PROFESSIONAL ENGINEER</small>	REGISTERED PROFESSIONAL: <i>HENRY O. GARCIA</i> HENRY O. GARCIA <small>REGISTERED PROFESSIONAL ENGINEER</small>	APPROVED BY: <i>HERNANDO D. ROALES</i> HERNANDO D. ROALES <small>REGISTERED PROFESSIONAL ENGINEER</small>	PROJECT TITLE / LOCATION: TWO STOREY SCHOOL BLDG. <small>CAVITE STATE UNIVERSITY TRINITY CAMPUS 1406 MARBESA CITY CAMPUS</small>	IMPLEMENTING AGENCY: CAVITE STATE UNIVERSITY	SHEET NO.: P / 3
---	--	---	--	--	--	--	---	---------------------



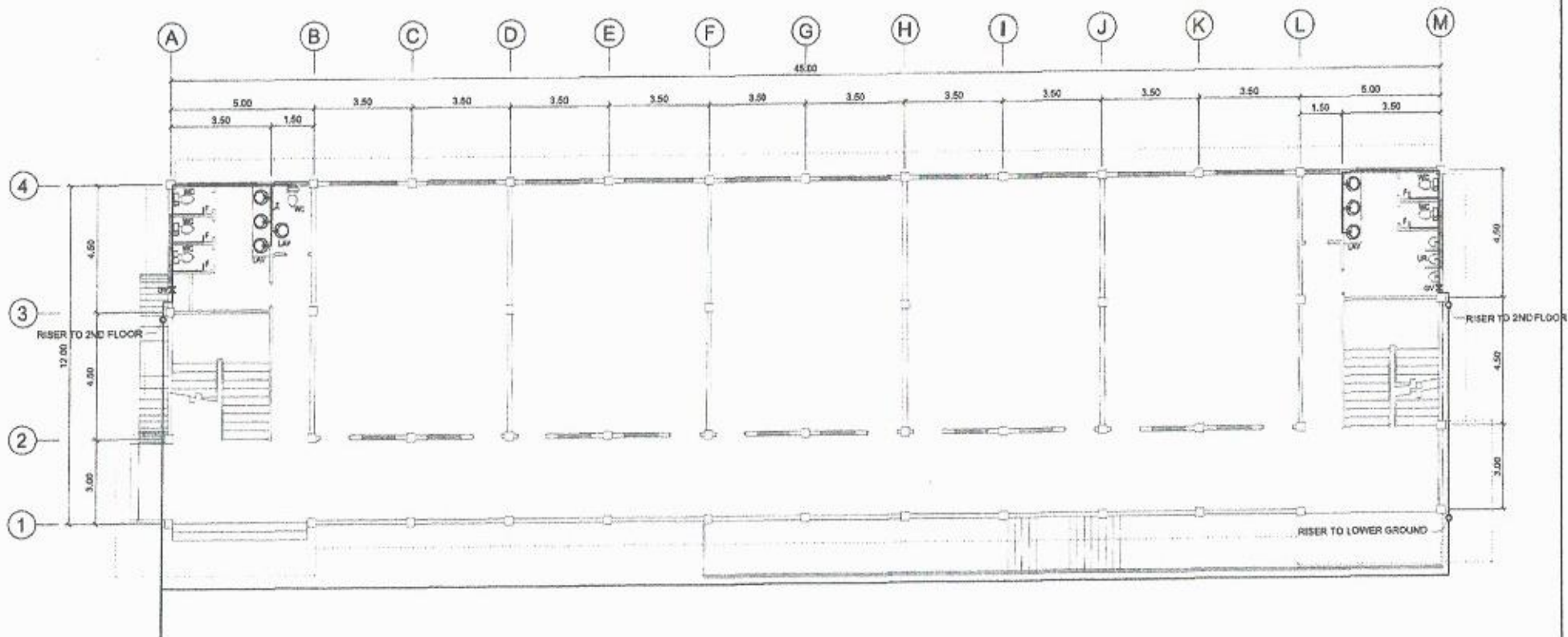
SECOND FLOOR SAN. SEWER LAYOUT
SCALE 1 : 150 MTS.

DED BY <i>E. RODEROS JR.</i> E. RODEROS JR. CIVIL	HEADSHPG WATER PLNGR <i>S. B. BAYOT JR.</i> S. B. BAYOT JR. CIVIL	ENR USER <i>NOEL A. SEDIGO</i> NOEL A. SEDIGO CIVIL	SHORSED BY <i>RENATO S. CUBILLA</i> RENATO S. CUBILLA DIRECTOR	PROJECT PRPGRAL <i>HENRY O. GARCIA</i> HENRY O. GARCIA PRAS	APPROVED BY <i>HERNANDO D. ROBLES</i> HERNANDO D. ROBLES PRESIDENT	PROJECT TITLE/LOCATION TWO STOREY SCHOOL BLDG. CAVITE STATE UNIVERSITY 1862 CAMPUS 18022 MATYRES CITY CAMPUS	SPLENDYNG AGENCY CAVITE STATE UNIVERSITY	SHEET NO. P / 4
--	--	--	---	--	---	--	---	--------------------



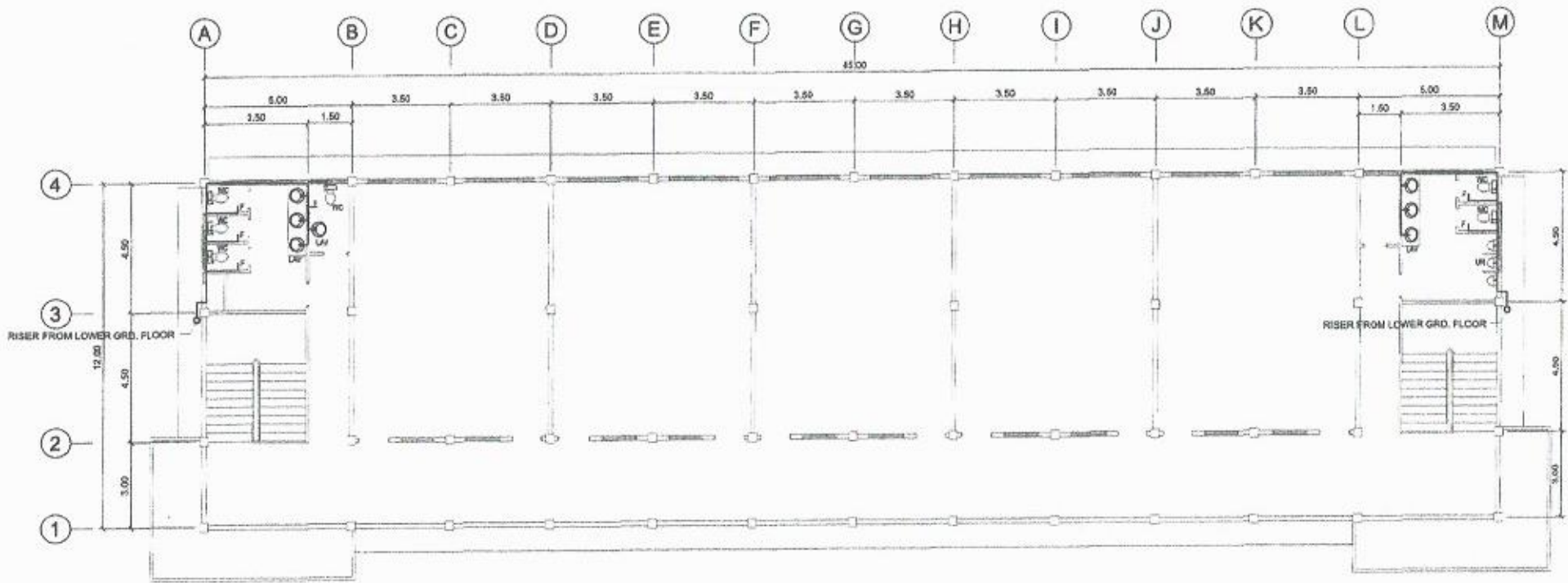
LOWER GROUND WATER SUPPLY LAYOUT
SCALE 1 : 150 MTS.

DESIGNED BY	REGISTERED WATER PLUMBER	ENGINEER	ENGINEER BY	REGISTERED ARCHITECT	APPROVED BY	PROJECT TITLE/LOCATION	IMPLEMENTING AGENCY	SHEET NO.
E. RODRIGOS JR. PW	S. B. BAYOT JR. PW	NOEL A. SEDIGO PEAC	RENATO B. COBILLA CONTRACTOR ALABANG OFFICE	HENRY O. GARCIA PW	HERNANDO D. ROBLES PW	TWO STOREY SCHOOL BLDG. CAVITE STATE UNIVERSITY TRINIDAD CAMPUS TRINIDAD CAMPUS CITY CAMPUS	CAVITE STATE UNIVERSITY	P 5



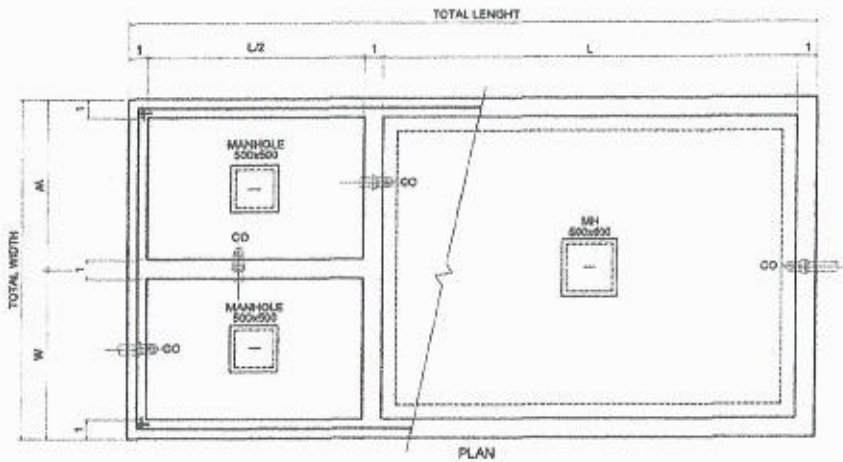
UPPER GROUND WATER SUPPLY LAYOUT
SCALE 1 : 150 MTS.

DRAWN BY	REGISTERED ARCHITECT	ENGINEER	ENGINEER BY	REGISTERED ARCHITECT	APPROVED BY	PROJECT TITLE/LOCATION	IMPLEMENTING AGENCY	SHEET NO.
E. RODRIGOS JR. PUN CET	S. B. BAYOT JR. PUN CET	NOEL A. SEDIGO ENR ENR	RENATO B. CUBILLA DIRECTOR PLANNING OFFICE	HENRY O. GARCIA V. ENR V. ENR	HERNANDO D. ROBLES PRESIDENT D-UC	TWO STOREY SCHOOL BLDG. CAVITE STATE UNIVERSITY TRINIDAD CAMPUS TRINIDAD CAMPUS	CAVITE STATE UNIVERSITY	P / 6

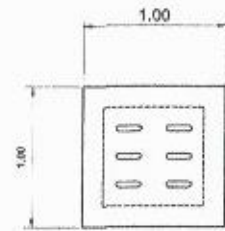
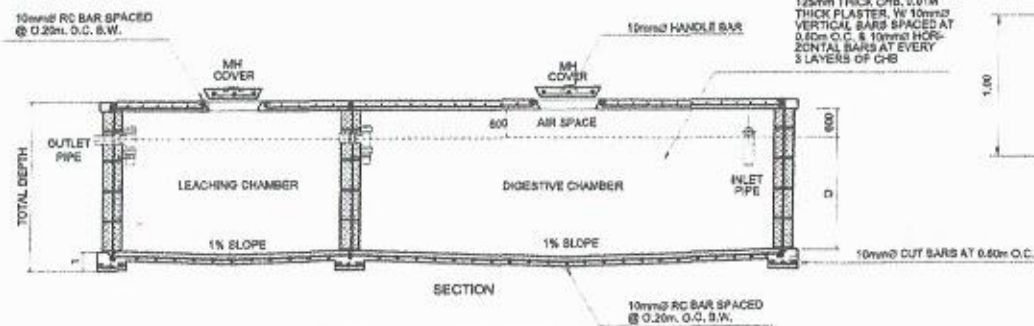


SECOND FLOOR WATER SUPPLY LAYOUT
SCALE 1:150 MTS.

DADO BY <i>E. Roderos Jr.</i> E. RODEROS JR. <small>ENR</small>	REGISTERED WATER PLUMBER <i>S. B. Bayot Jr.</i> S. B. BAYOT JR. <small>PLM</small>	END-USER <i>Noel A. Sedigo</i> NOEL A. SEDIGO <small>DEAN</small>	ARCHITECT <i>Renato Sycubilla</i> RENATO SUCUBILLA <small>DIRECTOR</small>	REGISTERED ELECTRICAL ENGINEER <i>Henry O. Garcia</i> HENRY O. GARCIA <small>ENR</small>	APPROVED BY <i>Hernando D. Robles</i> HERNANDO D. ROBLES <small>PLM</small>	PROJECT TITLE/LOCATION TWO STOREY SCHOOL BLDG. <small>CAVITE STATE UNIVERSITY TRICE CAMPUS TRICE HATTONS CITY CAMPUS</small>	IMPLEMENTING AGENCY CAVITE STATE UNIVERSITY	SHEET NO. P 7
---	--	---	--	--	---	---	---	-------------------------



2 CATCH BASIN/JUNCTION BOX DETAIL
SCALE: 1/4" = 1'-0"



1 AREA DRAIN/ MANHOLE
SCALE: 1/4" = 1'-0"

SEPTIC TANK DIMENSION					
LENGTH (L)	L/2	TOTAL LENGTH	WIDTH (W)	TOTAL WIDTH	DEPTH (D)
3000 MM	2500 MM	7500 MM	1250 MM	2500 MM	1500 MM

1 DETAIL OF SEPTIC TANK
SCALE: 1/4" = 1'-0"

DESIGNED BY E. RODRIGOS JR. <small>PROJ. CHIEF</small>	REGISTERED MASTER PLUMBER S. B. BAYOT JR. <small>PROJ.</small>	BIOLOGICAL NOEL A. SEDIGO <small>DESIGNER</small>	ENGINEER BY RENATO B. CUBILLA <small>DIRECTOR, TECHNICAL OFFICE</small>	RECOMMENDATIONAL HENRY O. GARCIA <small>PROJ. CHIEF</small>	APPROVED BY HERNANDO D. ROBLES <small>PROJ. CHIEF</small>	PROJECT TITLE & LOCATION TWO STOREY SCHOOL BLDG. <small>CAVITE STATE UNIVERSITY - INDOLE CAMPUS, 13853 MARICOR CITY CAMPUS</small>	IMPLEMENTING AGENCY CAVITE STATE UNIVERSITY	SHEET NO. P 8
---	---	--	--	--	--	---	---	-------------------------