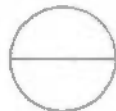


**REVISED
GROUND FLOOR PLAN**

SCALE 1 : 125 MTS.



PREPARED BY:
S. B. BAYOT JR.
PRJ CBT

CHD BY:
E. N. RODEROS JR.
PRJ CBT

END USER:
YOLANDA A. ILAGAN
DEAN CARMONA CAMPUS

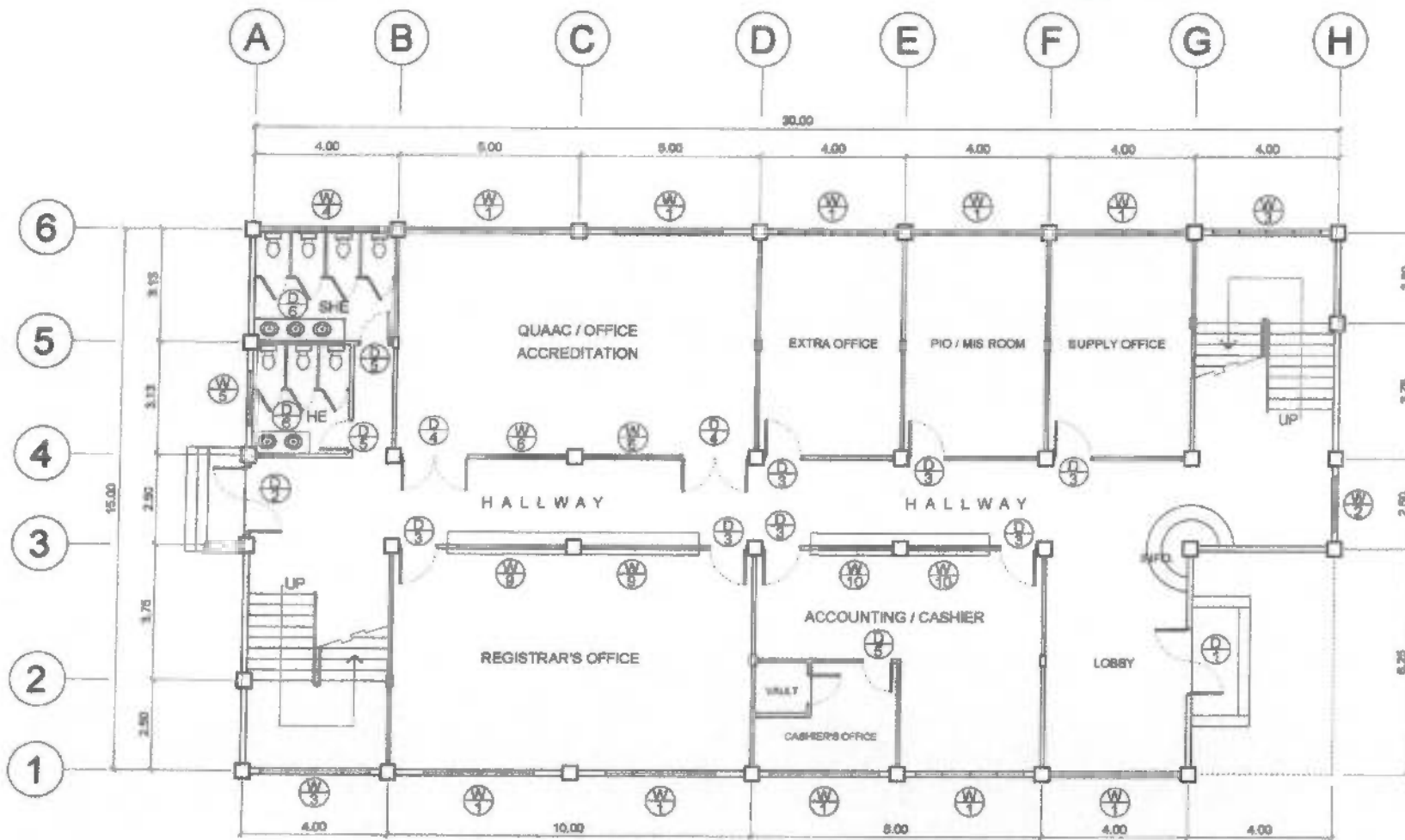
ENDORSED BY:
M. M. ESCOBAR
CIC CBT

APPROVED BY:
HERRANDO D. ROBLES
PRESIDENT CYSU

PROJECT TITLE / LOCATION:
CONSTR. OF ADMINISTRATION BUILDING
CYSU CARMONA CAMPUS, MADUYA CARMONA, CAVITE

IMPLEMENTING AGENCY:
CAVITE STATE UNIVERSITY

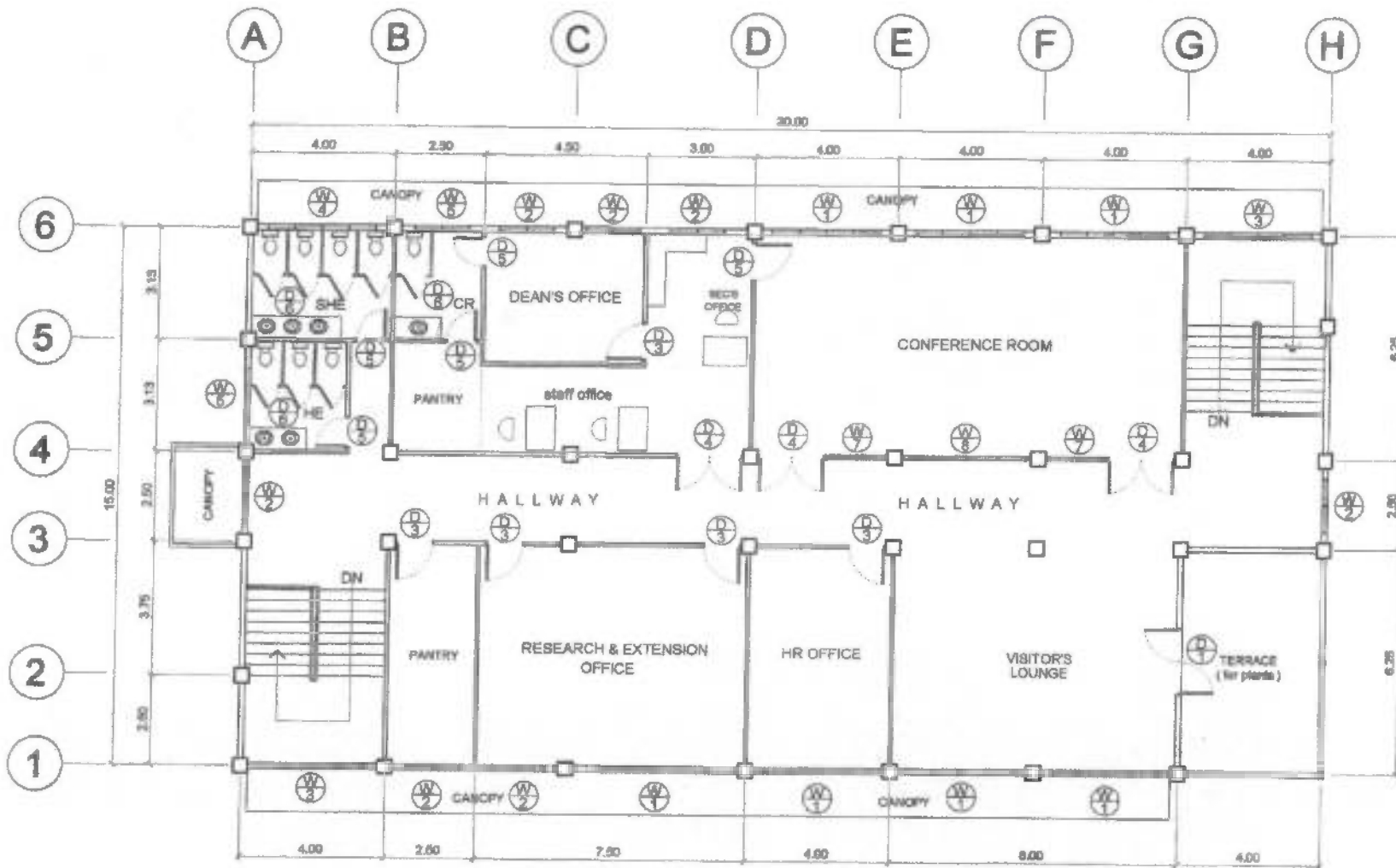
SHT. NO.
A - 1



GROUND FLOOR PLAN

SCALE 1 : 125 MTS.

PREPARED BY: S. B. BAYOT JR. <small>PRJ. CST</small>		END USER: YOLANDA S. ILAGAN <small>DEAN CARMONA CAMPUS</small>		ENDORSED BY: M. M. ESCOBAR <small>DEC. CST</small>		REC. APPROVAL: D. ROBLES <small>VPAG. CVSU</small>		APPROVED BY: R. S. CRIZALDO <small>DEC. OFFICE OF THE PRESIDENT</small>		PROJECT TITLE / LOCATION: CONSTN. OF ADMINISTRATION BUILDING <small>CVSU CARMONA CAMPUS, MADUYA CARMONA, CAVITE</small>		IMPLEMENTING AGENCY: CAVITE STATE UNIVERSITY		SHET. NO. A-1	
---	--	---	--	---	--	---	--	--	--	--	--	--	--	-------------------------	--



SECOND FLOOR PLAN

SCALE 1 : 125 MTS.

PREPARED BY:
S. S. Bayot Jr.
 S. S. BAYOT JR.
 PRJ CBT

DRAWN BY:
E. N. Roderos Jr.
 E. N. RODEROS JR.
 PRJ CBT

END USER:
Yolanda A. Ilagan
 YOLANDA A. ILAGAN
 DEAN CARMONA CAMPUS

ENDORSED BY:
M. M. Escobar
 M. M. ESCOBAR
 OIC CBT

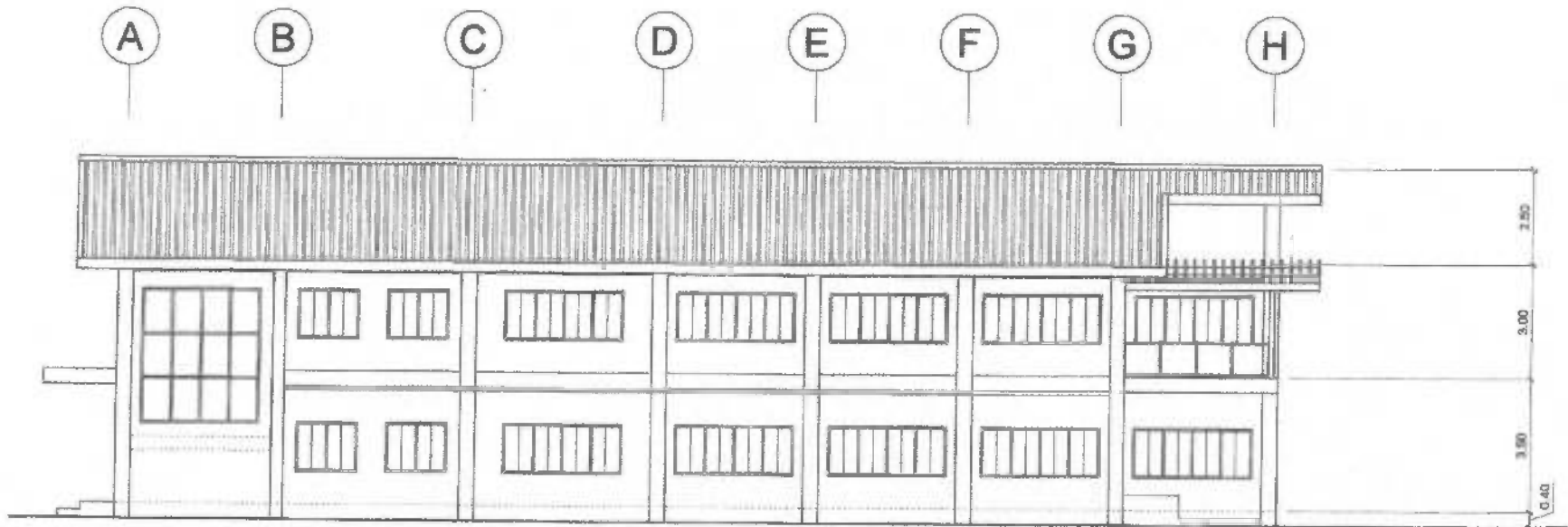
REC APPROVAL:
M. D. Robles
 M. D. ROBLES
 VPAGS CVELU

APPROVED BY:
R. S. Brizaldo
 R. S. BRIZALDO
 OIC, OFFICE OF THE PRESIDENT

PROJECT TITLE / LOCATION:
 CONSTN. OF ADMINISTRATION BUILDING
 CYSU CARMONA CAMPUS, MADUYA CARMONA, CAVITE

IMPLEMENTING AGENCY:
 CAVITE STATE UNIVERSITY

SHT. NO.
 A - 2



FRONT ELEVATION

SCALE

1 : 125 MTS.

PREPARED BY S. B. BAYOT JR. PPU CEIT		END USER: <i>Yolanda A. Ilagan</i> YOLANDA A. ILAGAN DEAN CARMONA CAMPUS	ENDORSED BY: <i>M. M. Escobar</i> M. M. ESCOBAR OIC CEIT	REC. APPROVAL: <i>H. D. Robles</i> H. D. ROBLES VP/AS CYSU	APPROVED BY: <i>R. S. Crizaldo</i> R. S. CRIZALDO OIC, OFFICE OF THE PRESIDENT	PROJECT TITLE / LOCATION: CONSTN. OF ADMINISTRATION BUILDING CVSU CARMONA CAMPUS, MADUYA CARMONA, CAVITE	IMPLEMENTING AGENCY: CAVITE STATE UNIVERSITY	SHT. NO. A - 3
---	--	--	--	--	--	---	--	--------------------------

1 2 3 4 5 6



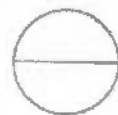
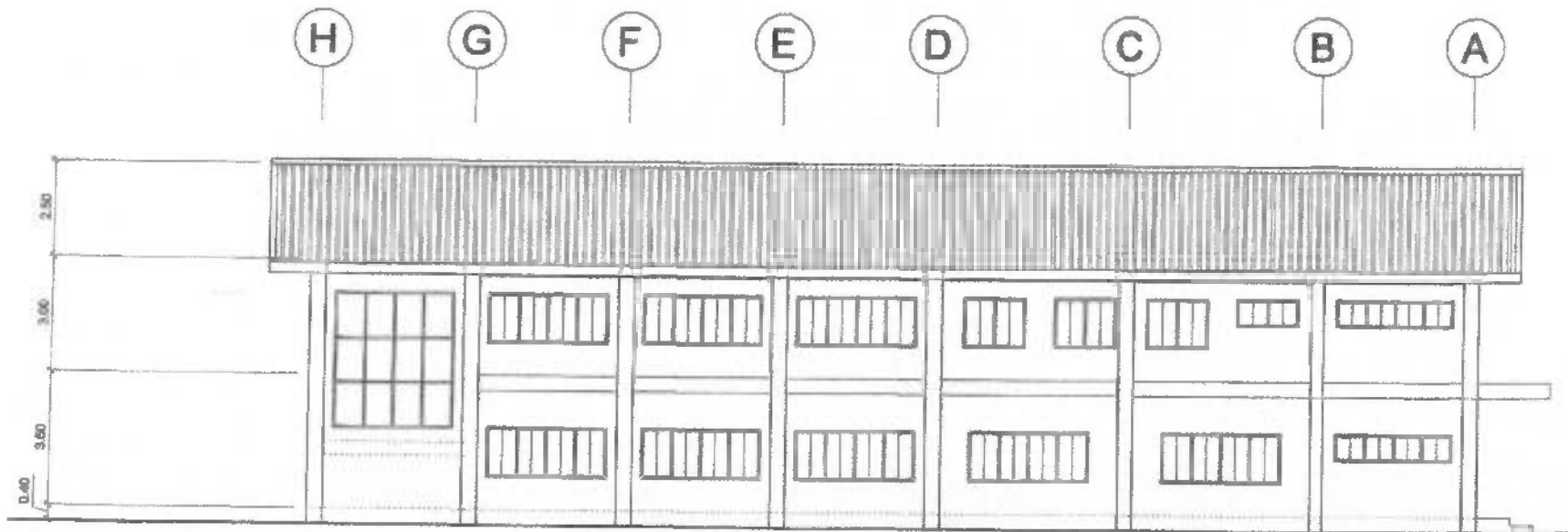
RIGHT SIDE ELEVATION
SCALE 1 : 125 MTS.

6 5 4 3 2 1



LEFT SIDE ELEVATION
SCALE 1 : 125 MTS.

PREPARED BY: S. E. BAYOT JR. PPU CBT		END USER: YOLANDA A. ILAGAN DEAN CARMONA CAMPUS		ENDORSED BY: M. M. ESCOBAR OIC CBT		REC. APPROVAL: H. D. ROBLES VP/ASST CYSU		APPROVED BY: R. S. CRIZALDO OIC, OFFICE OF THE PRESIDENT		PROJECT TITLE / LOCATION: CONSTN. OF ADMINISTRATION BUILDING CYSU CARMONA CAMPUS, MADUYA CARMONA, CAVITE		IMPLEMENTING AGENCY: CAVITE STATE UNIVERSITY		SHFT. NO. A-4
--	--	---	--	--	--	--	--	---	--	---	--	--	--	-------------------------

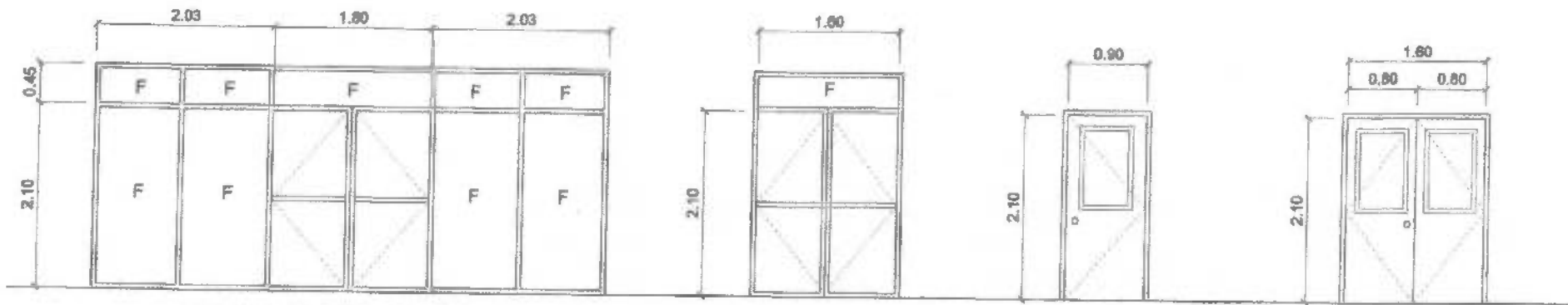


REAR ELEVATION

SCALE

1 : 125 MTS.

PREPARED BY: S. B. BAYOT JR. PPU CBT		ENDORSED BY: M. M. ESCOBAR VIC CBT		APPROVED BY: R. S. CRIZALDO OIC, OFFICE OF THE PRESIDENT		PROJECT TITLE / LOCATION: CONSTN. OF ADMINISTRATION BUILDING CVSU CARMONA CAMPUS, MADUYA CARMONA, CAVITE		IMPLEMENTING AGENCY: CAVITE STATE UNIVERSITY		SHT. NO. A-5
CADD BY: E. N. RODRIGOS JR. PPU CBT		END USER: YOLANDA A. ILAGAN DEAN CARMONA CAMPUS		REC APPROVAL: H. D. ROBLES VPASS CVSU						

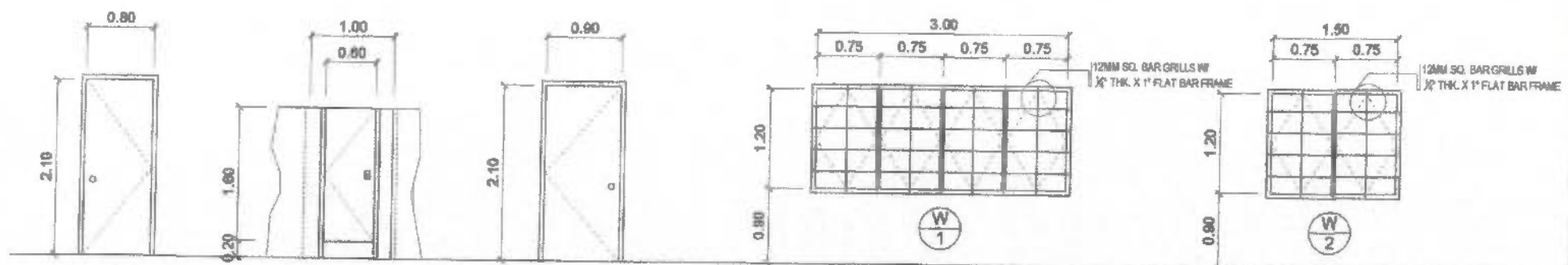


D 1 ALUMINUM FRAME DOOR COMPLETE W/
ALL ACCESSORIES W/ 3/8" THK COLORED GLASS
ON COLORED POWDER COATED FINISH
ALUMINUM FRAMING
2 SETS

D 2 ALUMINUM FRAME DOOR COMPLETE W/
ALL ACCESSORIES W/ 3/8" THK CLEAR GLASS
ON COLORED POWDER COATED FINISH
ALUMINUM FRAMING
1 SET

D 3 0.90 X 2.10 PANEL DOOR W/
3/8" THK CLEAR GLASS VIEW
WINDOW, W/ COMPLETE
ACCESSORIES
11 SETS

D 4 1.60 X 2.10 PANEL DOOR W/
3/8" THK CLEAR GLASS VIEW
WINDOW, W/ COMPLETE
ACCESSORIES
11 SETS



D 5 0.80 X 2.10 FLUSH DOOR
W/ COMPLETE ACCESSORIES
8 SETS

D 6 0.60 X 1.60 PVC DOOR PANEL
WITH COMPLETE ACCESSORIES
15 SETS

D 7 0.90 X 2.10 FLUSH DOOR
W/ COMPLETE ACCESSORIES
1 SET

W 1 ALUMINUM CASEMENT WINDOW COMPLETE W/
ALL ACCESSORIES W/ 1/4" THK CLEAR GLASS W/
12 MM SQUARE BAR GRILLS.
17 SETS

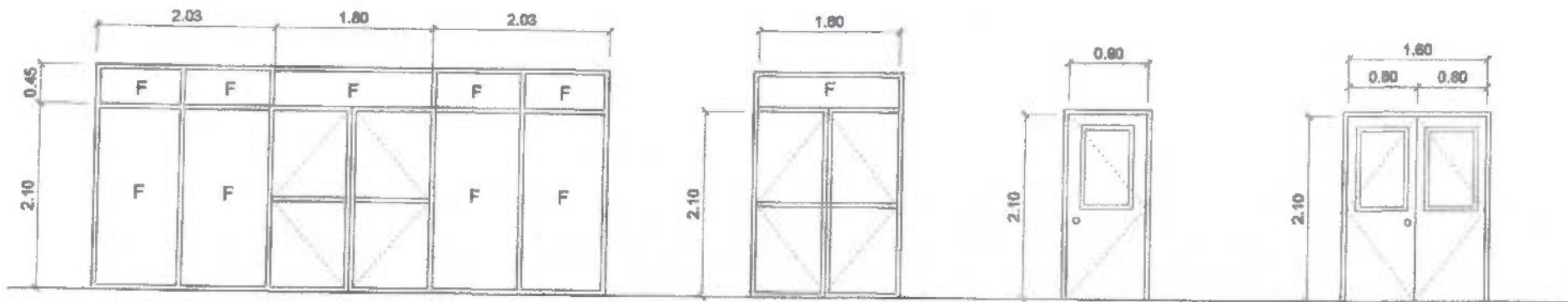
W 2 ALUMINUM CASEMENT WINDOW COMPLETE W/
ALL ACCESSORIES W/ 1/4" THK CLEAR GLASS
W/ 12 MM. SQUARE BAR GRILLS
8 SETS

SCHD. OF DOORS & WINDOWS

SCALE 1 : 50 MTS.

REVISED

PREPARED BY: S. B. BAYOT JR. RFU CBT		END USER: YOLANDA A. ALAGAN DEAN CARMONA CAMPUS		ENDORSED BY: M. M. ESCOBAR DEC CBT		APPROVED BY: HERNANDO D. ROBLES PRESIDENT CWSU		PROJECT TITLE / LOCATION: CONGTRN. OF ADMINISTRATION BUILDING CWSU CARMONA CAMPUS, MADUYA CARMONA, CAVITE		IMPLEMENTING AGENCY: CAVITE STATE UNIVERSITY		SHT. NO. A-6
--	--	---	--	--	--	--	--	---	--	---	--	-----------------



(D) 1

ALUMINUM FRAME DOOR COMPLETE W/
ALL ACCESSORIES W/ 3/8" THK COLORED GLASS
ON COLORED POWDER COATED FINISH
ALUMINUM FRAMING
2 SETS

(D) 2

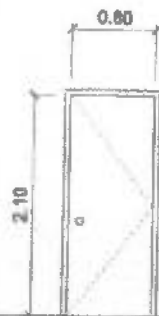
ALUMINUM FRAME DOOR COMPLETE W/
ALL ACCESSORIES W/ 3/8" THK CLEAR GLASS
ON COLORED POWDER COATED FINISH
ALUMINUM FRAMING
1 SET

(D) 3

0.90 X 2.10 PANEL DOOR W/
3/8" THK. CLEAR GLASS VIEW
WINDOW, W/ COMPLETE
ACCESSORIES
11 SETS

(D) 4

1.80 X 2.10 PANEL DOOR W/
3/8" THK. CLEAR GLASS VIEW
WINDOW, W/ COMPLETE
ACCESSORIES
11 SETS

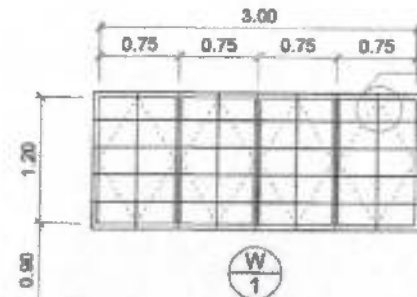
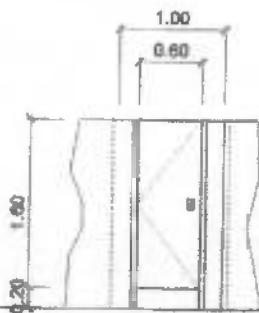


(D) 5

0.80 X 2.10 FLUSH DOOR
W/ COMPLETE ACCESSORIES
8 SETS

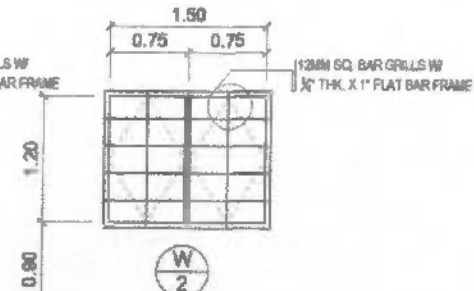
(D) 6

0.60 X 1.60 PVC DOOR PANEL
WITH COMPLETE ACCESSORIES
15 SETS



(W) 1

ALUMINUM CASEMENT WINDOW COMPLETE W/
ALL ACCESSORIES W/ 1/4" THK CLEAR GLASS W/
12 MM SQUARE BAR GRILLS.
17 SETS



(W) 2

ALUMINUM CASEMENT WINDOW COMPLETE W/
ALL ACCESSORIES W/ 1/4" THK CLEAR GLASS
W/ 12 MM. SQUARE BAR GRILLS
8 SETS

SCHED. OF DOORS & WINDOWS

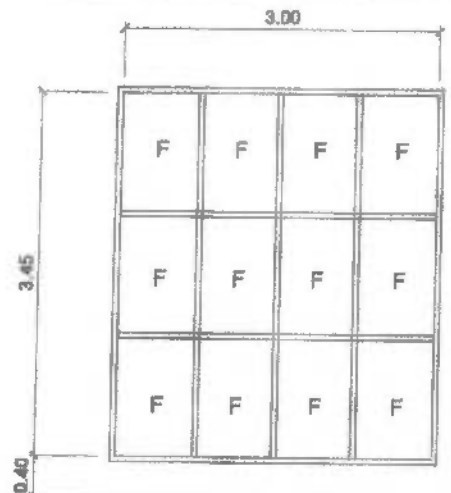
SCALE 1 : 50 MTS.

PREPARED BY: S. B. BAYON JR. PPU CBT
ADD BY: E. N. RODRIGOS JR. PPU CBT

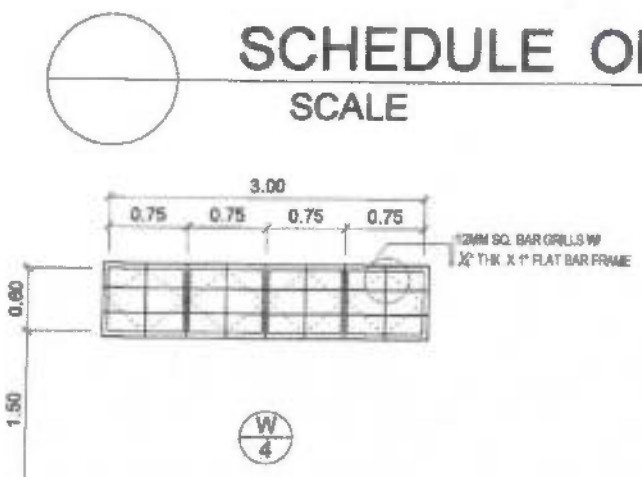
END USER: YOLANDA S. ILAGAN DEAN CARMONA CAMPUS	ENDORSED BY: M. M. ESCOBAR OIC CBT	REC APPROVAL: H. D. ROBLES VPASS CVSU	APPROVED BY: R. S. BRIZALDO OIC OFFICE OF THE PRESIDENT	PROJECT TITLE / LOCATION: CONSTN. OF ADMINISTRATION BUILDING CVSU CARMONA CAMPUS, MADUYA CARMONA, CAVITE	IMPLEMENTING AGENCY: CAVITE STATE UNIVERSITY	SHT. NO. A-8
---	--	---	---	--	---	-----------------

SCHEDULE OF WINDOWS

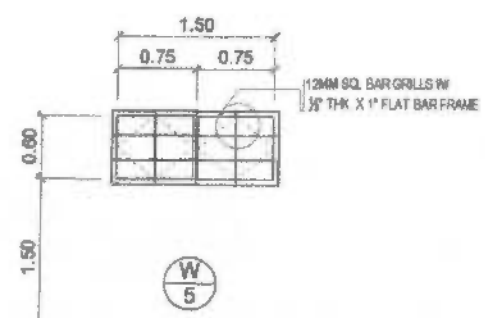
SCALE 1 : 50 MTS.



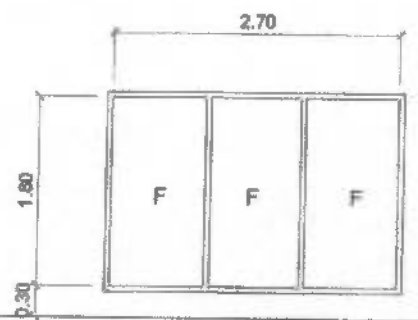
W
3 ALUMINUM FIXED WINDOW COMPLETE W/
ALL ACCESSORIES W / 1/4" THK CLEAR GLASS
2 SETS



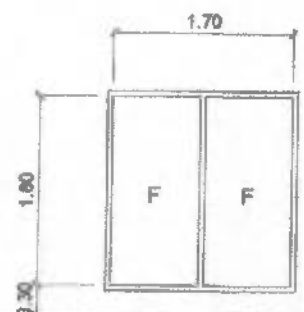
ALUMINUM CASEMENT WINDOW COMPLETE W/
ALL ACCESSORIES W / 1/4" THK CLEAR GLASS
2 SETS



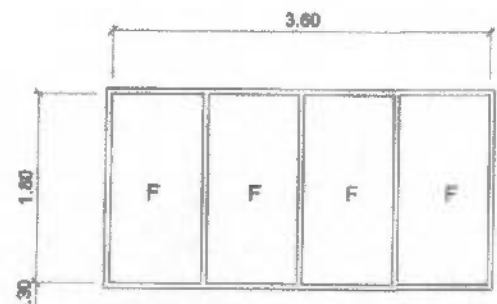
ALUMINUM CASEMENT WINDOW COMPLETE W/
ALL ACCESSORIES W / 1/4" THK CLEAR GLASS
3 SETS



W
6 ALUMINUM FIXED WINDOW COMPLETE W/
ALL ACCESSORIES W / 1/4" THK CLEAR GLASS
2 SETS

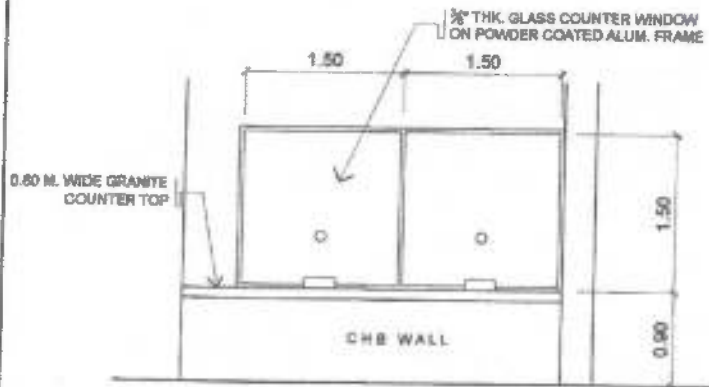


W
7 ALUMINUM FIXED WINDOW COMPLETE W/
ALL ACCESSORIES W / 1/4" THK CLEAR GLASS
2 SETS



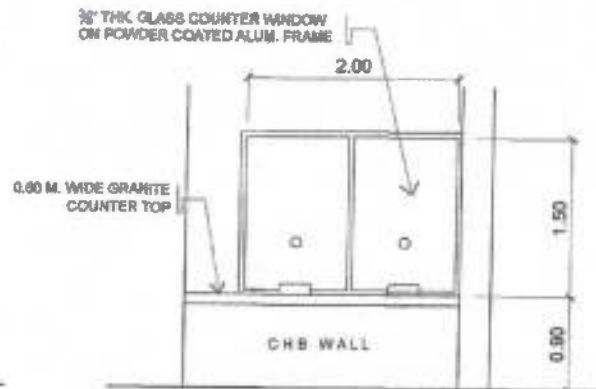
W
8 ALUMINUM FIXED WINDOW COMPLETE W/
ALL ACCESSORIES W / 1/4" THK CLEAR GLASS
1 SET

PREPARED BY: S. B. BAYOT JR. RPLU CBT		END USER: YOLANDA A. ILAGAN DEAN CARMONA CAMPUS		ENDORSED BY: M. M. ESCOBAR OIC CBT		REC. APPROVAL: H. D. ROBLES WVMS OVBU		APPROVED BY: R. S. CRIZALDO OIC, OFFICE OF THE PRESIDENT		PROJECT TITLE / LOCATION: CONSTN. OF ADMINISTRATION BUILDING CVSU CARMONA CAMPUS, MADUYA CARMONA, CAVITE		IMPLEMENTING AGENCY: CAVITE STATE UNIVERSITY		SHT. NO. A-7	
---	--	---	--	--	--	---	--	---	--	--	--	---	--	-----------------	--



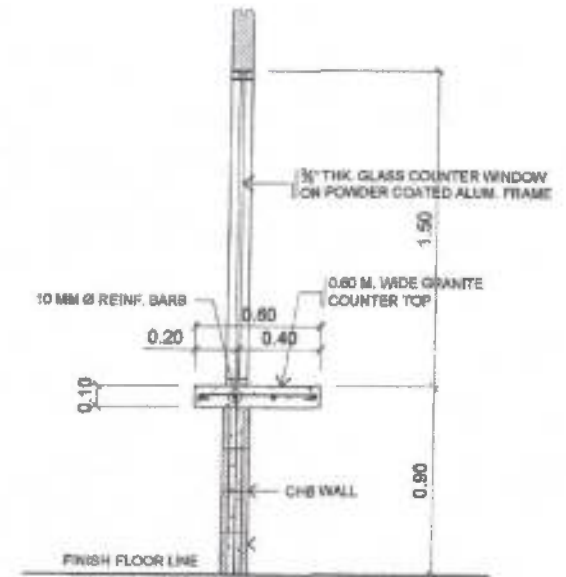
W
9

ALUMINUM FIXED COUNTER WINDOW COMPLETE W/
ALL ACCESSORIES W/ 3/8" THK CLEAR GLASS AND
12MM SQUARE BAR GRILLS
2 SETS



W
10

ALUMINUM FIXED COUNTER WINDOW COMPLETE W/
ALL ACCESSORIES W/ 3/8" THK CLEAR GLASS AND
12MM SQUARE BAR GRILLS
2 SETS



SECTION

W
11

DET. SEC. OF COUNTER WINDOW
SCALE 1 : 25 MTS.

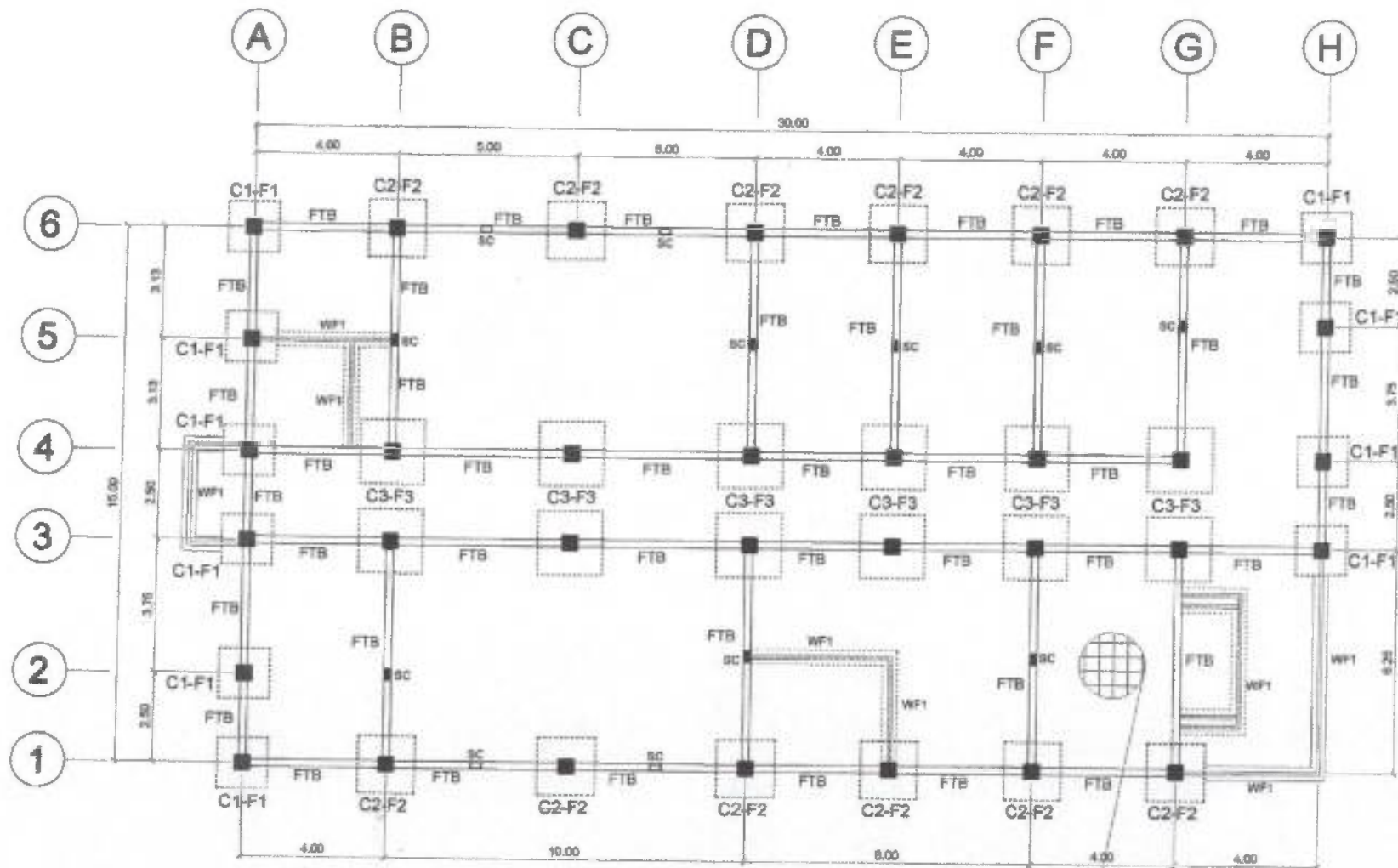


SCHEDULE OF WINDOWS

SCALE

1 : 50 MTS.

PREPARED BY: S. B. BAYOT JR. PPU CEIT		END USER: YOLANDA A. ILAGAN DEAN, CARMONA CAMPUS	ENDORSED BY: M. M. ESCOBAR CIC CEIT	REC APPROVAL: H. D. ROBLES PPUS CVSU	APPROVED BY: R. S. BENZALDO CIC, OFFICE OF THE PRESIDENT	PROJECT TITLE / LOCATION: CONSTN. OF ADMINISTRATION BUILDING CVSU CARMONA CAMPUS, MADUYA CARMONA, CAVITE	IMPLEMENTING AGENCY: CAVITE STATE UNIVERSITY	SHT. NO. A-8
--	--	--	--	---	--	--	---	-----------------



0.10m SLAB ON FILL W/ 10mm Ø DEF. BARS @ EVERY .4m C to C PROVIDE 2" THK GRAVEL FILLING

FOUNDATION PLAN

SCALE 1 : 125 MTS.

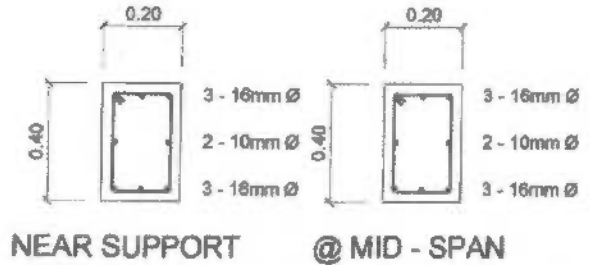
PREPARED BY:

 M. M. ESCOBAR JR.
 CEU
 CBT

DATE BY:	END USER:	ENDORSED BY:	REC APPROVAL:	APPROVED:	PROJECT TITLE / LOCATION:	IMPLEMENTING AGENCY:	SYT. NO.
E. N. RODRIGUEZ JR. CEU CBT	YOYANDA Z. ILAGAN DEAN CARMONA CAMPUS	M. M. ESCOBAR CEU CBT	H.D. ROBLES VPASS CVSU	R. S. CRIZALDO DIR. OFFICE OF THE PRESIDENT	CONSTR. OF ADMINISTRATION BUILDING CVSU CARMONA CAMPUS, MADUYA CARMONA, CAVITE	CAVITE STATE UNIVERSITY	8 - 1

SCHEDULE OF FOOTINGS

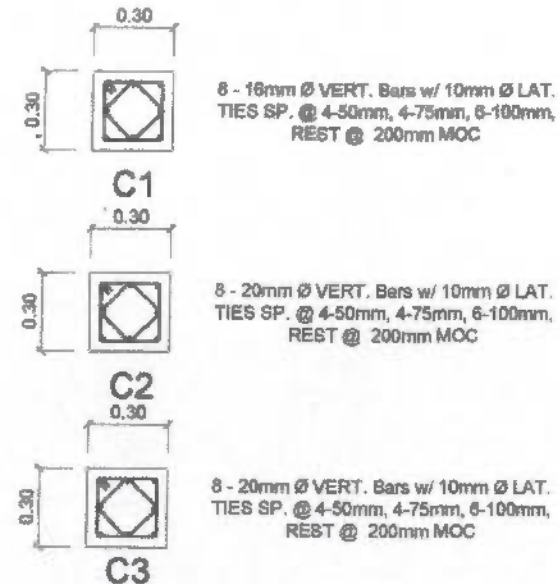
MARK	t (m)	b (m)	w (m)	REINFORCEMENTS	REMARKS
F-1	0.30	1.40	1.40	7 - 16 mm Ø BOTH WAYS	ISOLATED
F-2	0.30	1.80	1.60	8 - 16 mm Ø BOTH WAYS	ISOLATED
F-3	0.30	1.80	1.80	9 - 16 mm Ø BOTH WAYS	ISOLATED



DET. SEC. FTG. TIE BEAM
SCALE 1 : 20 MTS.

SCHEDULE OF COLUMNS & STIFFENER COLS.

COLUMN	DIMENSION	VERTICAL BARS	BAR ARRANGEMENT	LATERAL TIES	REMARKS
C-1	300 x 300	8 - 16 MM Ø		4-50 MM, 4-75 MM, 6-100 MM REST @ 150 MM O.C.	
C-2	300 x 300	8 - 20 MM Ø		4-50 MM, 4-75 MM, 6-100 MM REST @ 150 MM O.C.	8 - 16 MM, FRM. 2ND FLOOR TO ROOF BEAM
C-3	300 x 300	8 - 20 MM Ø		4-50 MM, 4-75 MM, 6-100 MM REST @ 150 MM O.C.	8 - 16 MM, FRM. 2ND FLOOR TO ROOF BEAM
SC	150 x 300	4 - 16 MM Ø		4-50 MM, 4-75 MM, 6-100 MM REST @ 150 MM O.C.	



DET. SEC. OF COLUMNS
SCALE 1 : 20 MTS.

PREPARED BY:

M. N. RODRIGOS JR.
RPU CEIT

CADD BY:

E. N. RODRIGOS JR.
RPU CEIT

END USER:

YOLANDA A. ILAGAN
DEAN, CARMONA CAMPUS

ENDORSED BY:

M. M. ESCOBAR
OIC, CEIT

RESC APPROVAL:

H. D. ROBLES
VP/ASST, CIVIL

APPROVED BY:

R. S. CRIZALDO
OIC, OFFICE OF THE PRESIDENT

PROJECT TITLE / LOCATION:

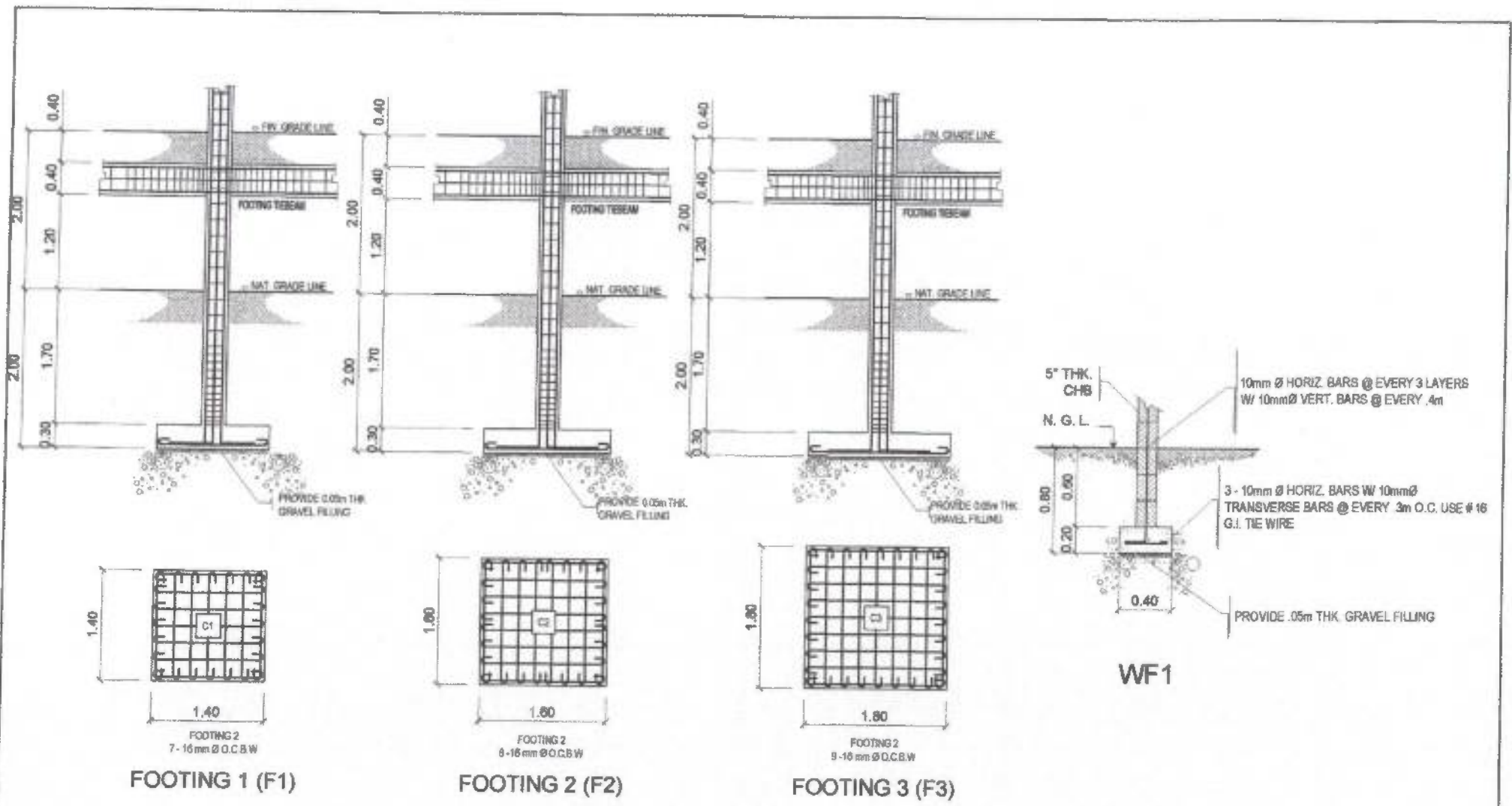
CONSTN. OF ADMINISTRATION BUILDING
CVSU CARMONA CAMPUS, MADUYA CARMONA, CAVITE

IMPLEMENTING AGENCY:

CAVITE STATE UNIVERSITY

SHT. NO.

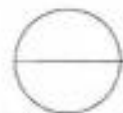
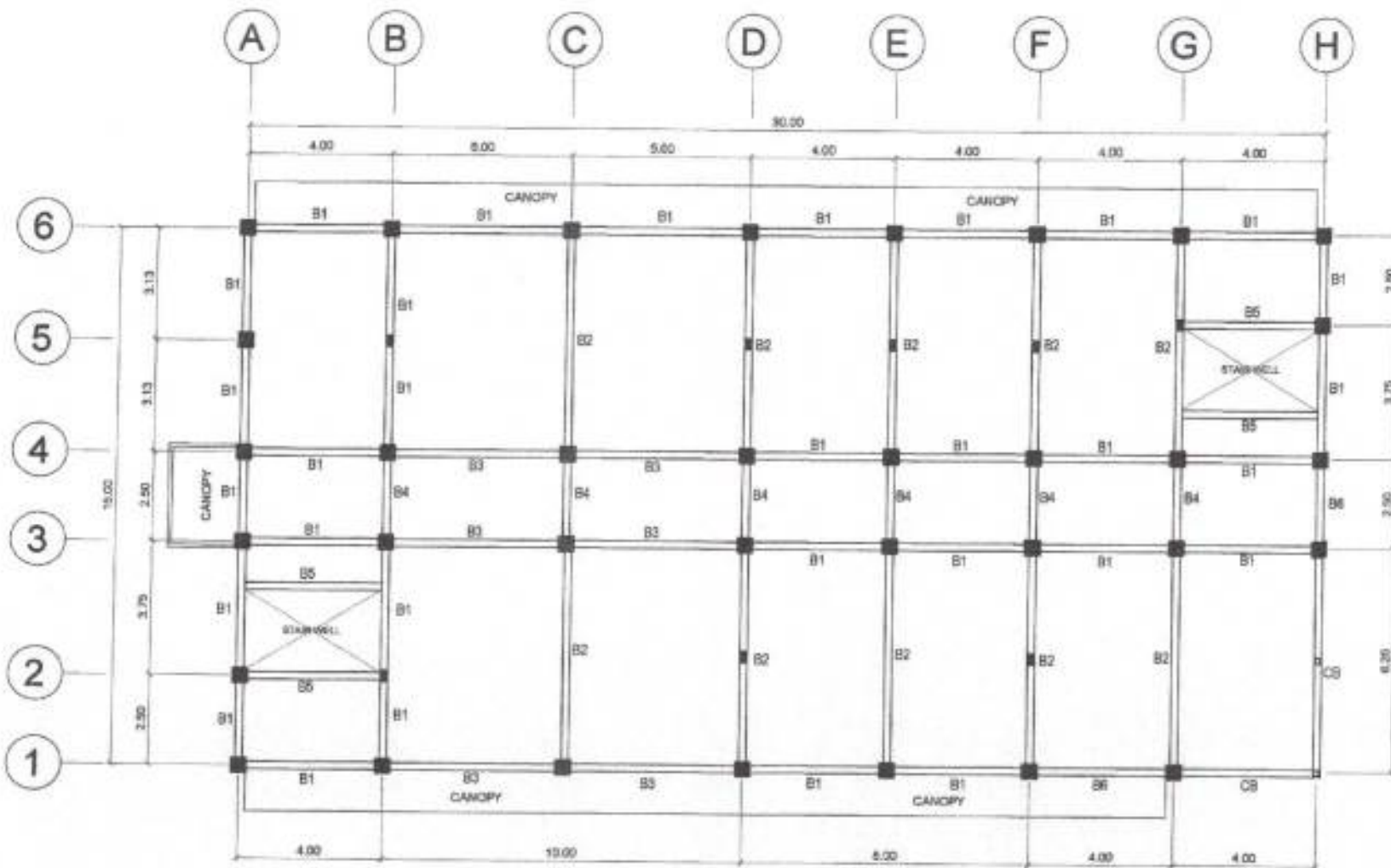
8 - 2



DET. SEC. OF COLS. & FOOTING
SCALE 1 : 50 MTS.

PREPARED BY:
M. G. ...
RPU CBT





CADD BY: <i>E. N. ...</i> RPU CBT	END USER: <i>Yolanda ...</i> DEAN CARMONA CAMPUS	ENDORSED BY: <i>M. M. ...</i> OIC CBT	REC. APPROVAL: <i>N. D. ...</i> VPAS OVSU	APPROVED BY: <i>R. S. ...</i> OIC, OFFICE OF THE PRESIDENT	PROJECT TITLE / LOCATION: CONSTN. OF ADMINISTRATION BUILDING CVSU CARMONA CAMPUS, MADUYA CARMONA, CAVITE	IMPLEMENTING AGENCY: CAVITE STATE UNIVERSITY	SHEET NO. S-3
---	--	---	---	--	--	---	------------------

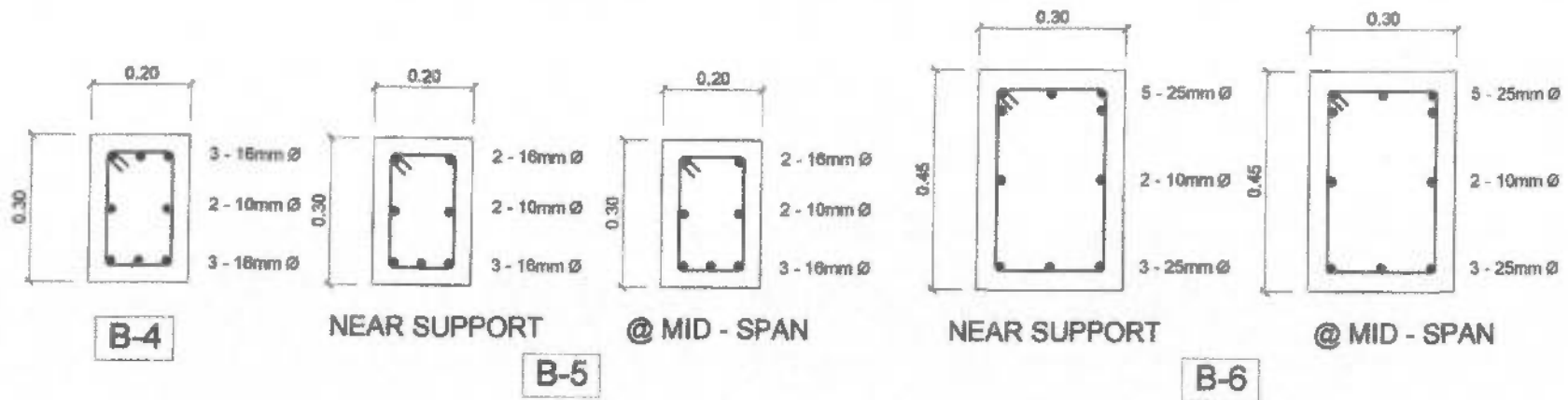
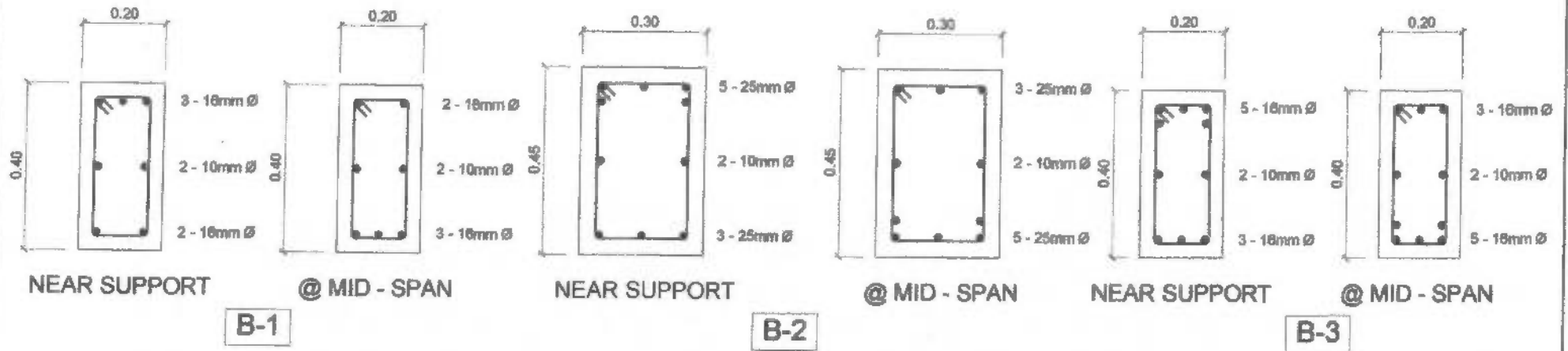


2ND FLOOR FRAMING PLAN

SCALE

1 : 125 MTS.

PREPARED BY:  M. A. ESCOBAR <small>DR</small> <small>CEIT</small>		END USER:  YOLANDA KILAGAN <small>DEAN</small> <small>CARMONA CAMPUS</small>		ENDORSED BY:  M. M. ESCOBAR <small>DC</small> <small>CEIT</small>		REC. APPROVAL:  D. ROBLES <small>VP/ASST</small> <small>CSU</small>		APPROVED:  R. S. CRIZALDO <small>DC, OFFICE OF THE PRESIDENT</small>		PROJECT TITLE / LOCATION: CONSTN. OF ADMINISTRATION BUILDING CSU CARMONA CAMPUS, MADUYA CARMONA, CAVITE		IMPLEMENTING AGENCY: CAVITE STATE UNIVERSITY		SH. NO. S-4
---	--	--	--	---	--	---	--	---	--	---	--	---	--	----------------

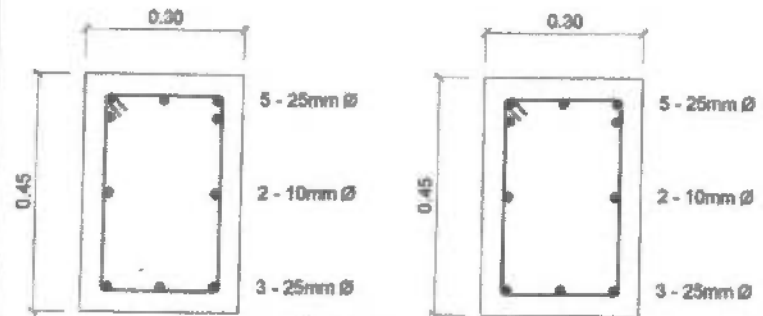


SCHEDULE OF BEAMS

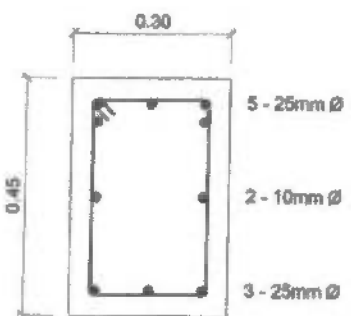
SCALE 1:10 M

PREPARED BY:
M. M. ESCOBAR

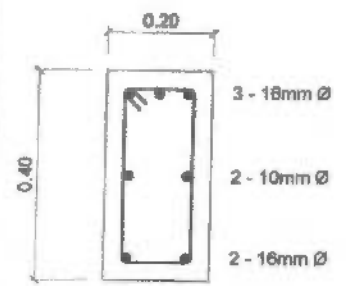
DESIGNED BY:	END USER:	ENDORSED BY:	REC. APPROVAL:	APPROVED BY:	PROJECT TITLE / LOCATION:	IMPLEMENTING AGENCY:	BMT. NO.:
E. N. RODRIGOS JR. PPU	YOLANDA A. ILAGAN DEAN CARMONA CAMPUS	M. M. ESCOBAR OIC CBT	H. D. ROBLES VPASS CWSU	R. S. CRIZALDO OIC, OFFICE OF THE PRESIDENT	CONSTN. OF ADMINISTRATION BUILDING CWSU CARMONA CAMPUS, MADUYA CARMONA, CAVITE	CAVITE STATE UNIVERSITY	S - 5



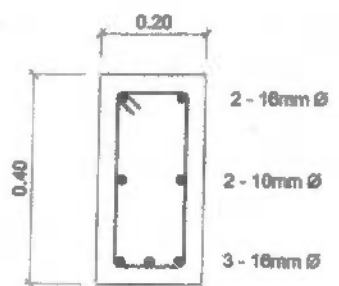
NEAR SUPPORT **CB**



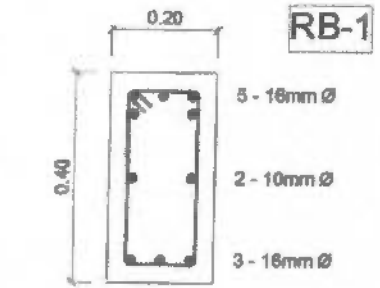
@ MID - SPAN



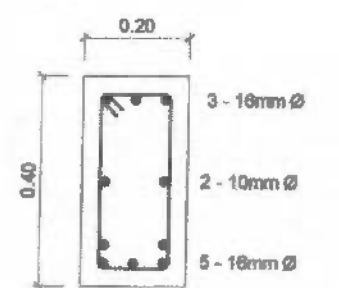
NEAR SUPPORT



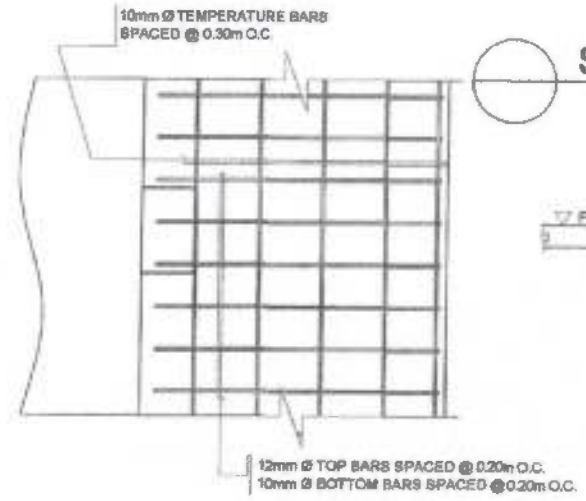
@ MID - SPAN



NEAR SUPPORT

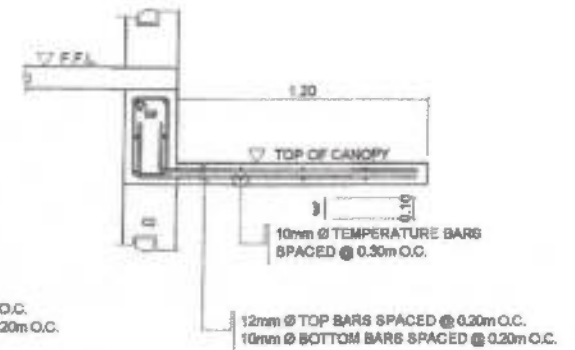


@ MID - SPAN

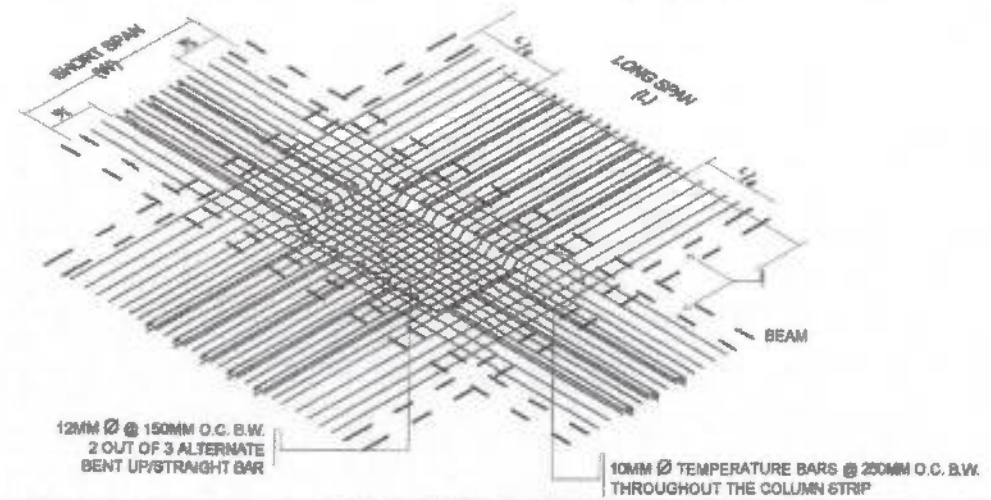


PLAN

STRUCTL. DET. OF CANOPY
SCALE NTS.



SECTION

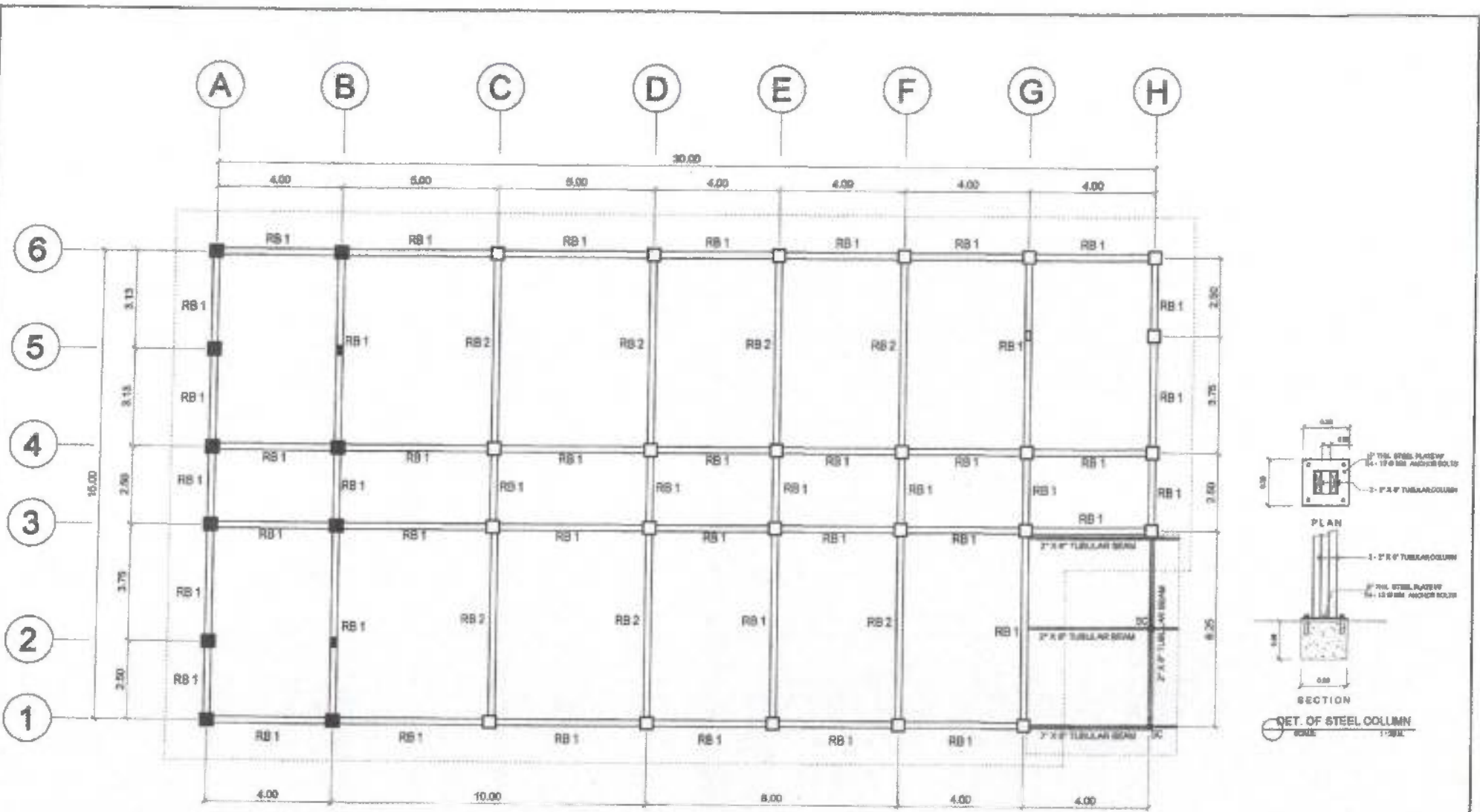


TWO-WAY SLAB
DET. OF SLAB REINFORCEMENT
SCALE NTS.

PREPARED BY:
[Signature]
PPU CBT

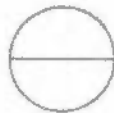
RB 2

PREPARED BY: <i>[Signature]</i> PPU CBT	END USER: <i>[Signature]</i> Y. ANDA B. ILAGAN DEAN CARMONA CAMPUS	ENDORSED BY: <i>[Signature]</i> M. N. ESCOBAR DIC CBT	REC. APPROVAL: <i>[Signature]</i> H. D. ROBLES VP/AS CMBU	APPROVED BY: <i>[Signature]</i> R. S. CRIZALDO DIC, OFFICE OF THE PRESIDENT	PROJECT TITLE / LOCATION: CONSTN. OF ADMINISTRATION BUILDING CYSU CARMONA CAMPUS, MADUYA CARMONA, CAVITE	IMPLEMENTING AGENCY: CAVITE STATE UNIVERSITY	SHEET NO. S - 6
---	---	--	--	--	--	---	--------------------



PREPARED BY:

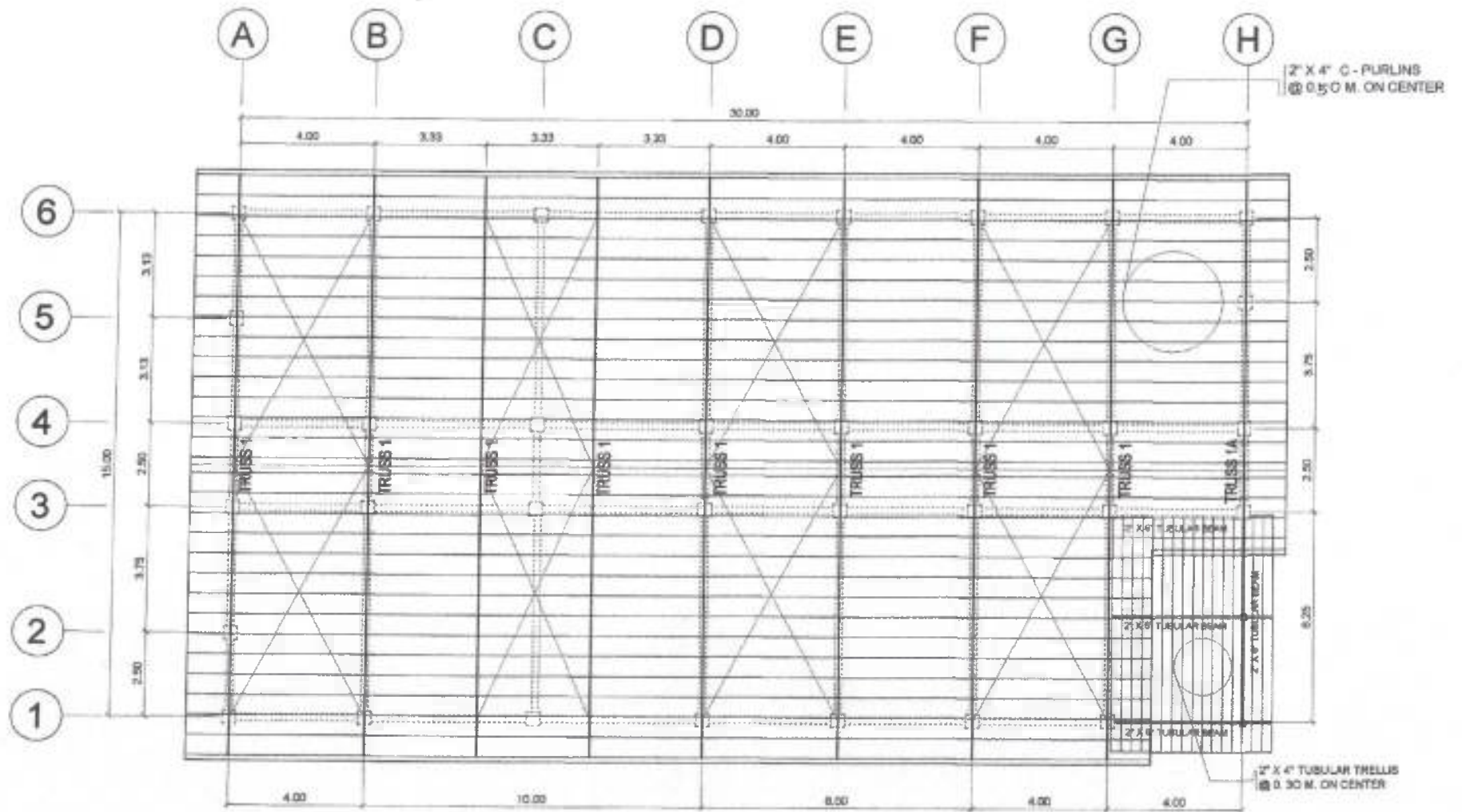
 M. M. ESCOBAR
 PPU CST



ROOF BEAM PLAN

SCALE 1 : 125 MTS.

PREPARED BY:	END USER:	ENDORSED BY:	REC. APPROVAL:	APPROVED BY:	PROJECT TITLE / LOCATION:	IMPLEMENTING AGENCY:	SHT. NO.:
 E. N. RODEROS JR. PPU CST	 YOLANDA A. ILAGAN DEAN CARICHA CAMPUS	 M. M. ESCOBAR OIC	 D. D. ROBLES VPABS OIC	 R. S. PRIZALDO OIC, OFFICE OF THE PRESIDENT	CONSTN. OF ADMINISTRATION BUILDING CVSU CARICHA CAMPUS, MADUYA CARICHA, CAVITE	CAVITE STATE UNIVERSITY	S-7



ROOF FRAMING PLAN

SCALE 1 : 125 MTS.

PREPARED BY:

 M. M. ESCOBAR, JR.
 P/U CBT

CHD BY:

 E. N. RODRIGS JR.
 P/U CBT

END USER:

 YOLANDA DILAGAN
 DEAN CARMINA CAMPUS

ENDORSED BY:

 M. M. ESCOBAR
 DEC CBT

REC APPROVAL:

 H. D. ROBLES
 VP/AS CHS

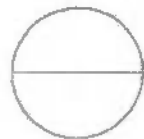
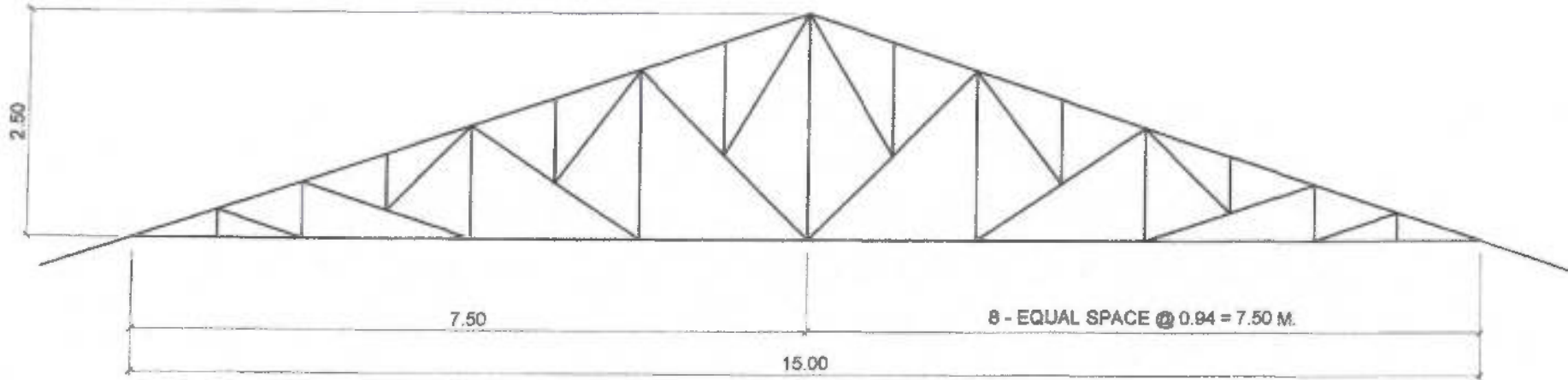
APPROVED BY:

 R. S. CRIZALDO
 DEC OFFICE OF THE PRESIDENT

PROJECT TITLE / LOCATION:
 CONSTN. OF ADMINISTRATION BUILDING
 (CVSU CARMINA CAMPUS, MADUYA CARMINA, CAVITE)

IMPLEMENTING AGENCY:
 CAVITE STATE UNIVERSITY

SHT. NO.
 5 - 8



ROOF FRAMING PLAN

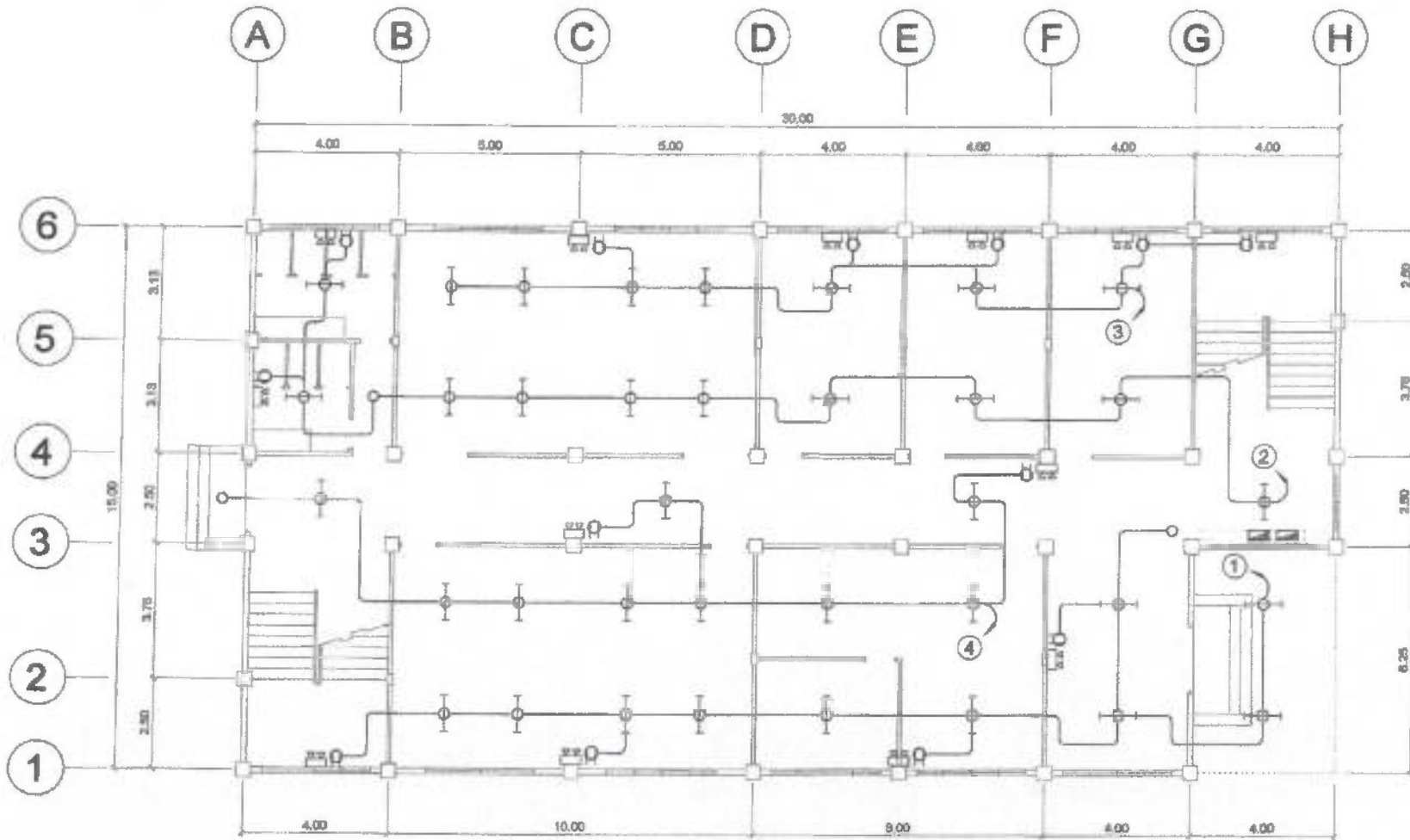
SCALE

1 : 50 MTS.

NOTE:

- USE THE FOLLOWING:
- 2 - 50mm x 50mm x 6mm ANGULAR BAR FOR TOP CHORDS
 - 2 - 50mm x 50mm x 6mm ANGULAR BAR FOR BOTTOM CHORDS
 - 2 - 50mm x 50mm x 6mm ANGULAR BAR FOR KING POSTS
 - 2 - 38mm x 38mm x 6mm ANGULAR BAR FOR WEB MEMBERS
 - 6mm THICK GUSSET PLATES ON ALL JOINTS
 - 16mm Ø ROUND BAR CROSS BRACING W/ TURN BUCKLES
 - 12mm Ø ROUND BAR SAG ROD AT MIDDLE THIRD
 - 50mm x 100mm x 1.5mm CEE PURLINS SPACED @ 0.50m O.C.
 - 12mm THICK BASE PLATES
 - 16mm Ø ANCHOR BOLTS

PREPARED BY: <i>[Signature]</i> PPU CEIT	END USER: <i>[Signature]</i> YOLANDA A. ILAGAN DEAN CARMONA CAMPUS	ENDORSED BY: <i>[Signature]</i> M. M. ESCOBAR OIC CEIT	REC. APPROVAL: <i>[Signature]</i> H. D. ROBLES VP/ASST CVSU	APPROVED BY: <i>[Signature]</i> R. S. ORIZALDO OIC, OFFICE OF THE PRESIDENT	PROJECT TITLE / LOCATION: CONSTN. OF ADMINISTRATION BUILDING CVSU CARMONA CAMPUS, MADUYA CARMONA, CAVITE	IMPLEMENTING AGENCY: CAVITE STATE UNIVERSITY	SHT. NO. 8-9
---	--	--	---	--	--	---	-----------------



GRD. FLR. LIGHTING LAYOUT

SCALE

1 : 125 MTS.

PREPARED BY:
Ronald P. Pena
RONALD P. PENA
 PPU CBT

CADD BY:
E. N. Ronderos Jr.
E. N. RONDEROS JR.
 PPU CBT

END USER:
Yolanda A. Ilagan
YOLANDA A. ILAGAN
 DEAN CARMONA CAMPUS

ENDORSED BY:
M. N. Escobar
M. N. ESCOBAR
 OIC CBT

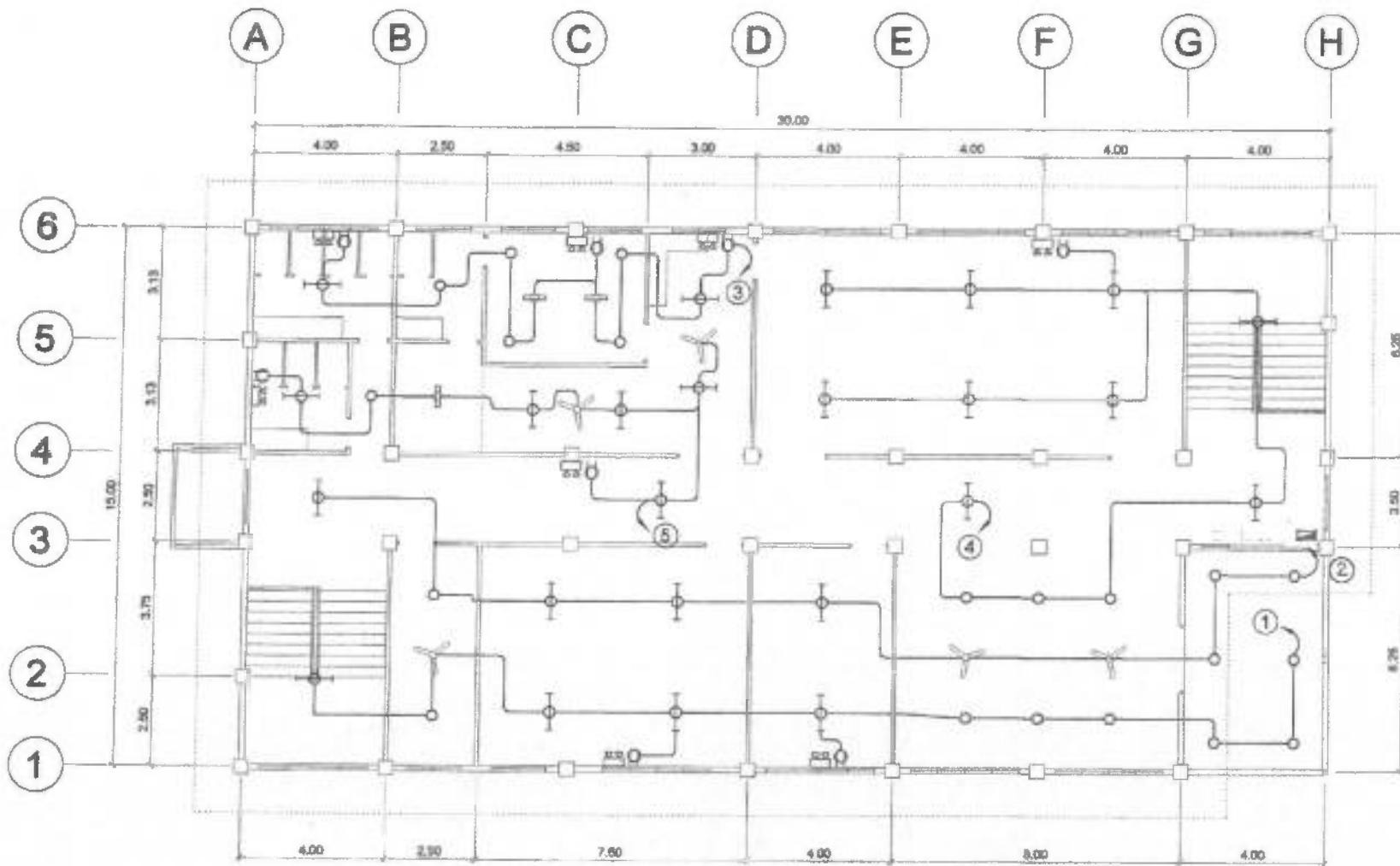
REG. APPROVAL:
H. D. Robles
H. D. ROBLES
 W/ASS C/SU

APPROVED BY:
R. S. Crizaldo
R. S. CRIZALDO
 OIC, OFFICE OF THE PRESIDENT

PROJECT TITLE / LOCATION:
CONSTN. OF ADMINISTRATION BUILDING
 C/SU CARMONA CAMPUS, MADUYA CARMONA, CAVITE

IMPLEMENTING AGENCY:
CAVITE STATE UNIVERSITY

SHT. NO.
E - 1



2ND FLR. LIGHTING LAYOUT

SCALE

1 : 125 MTS.

PREPARED BY:

 RONALD P. PEÑA
 PEU CET

DRAWN BY:

 E. N. RODEROS JR.
 PEU CET

END USER:

 YOLANDA A. ILAGAN
 DEAN CARMONA CAMPUS

ENDORSED BY:

 M. M. ESCOBAR
 OIC CET

REC. APPROVAL:

 H. D. ROBLES
 VP/ASB CVSU

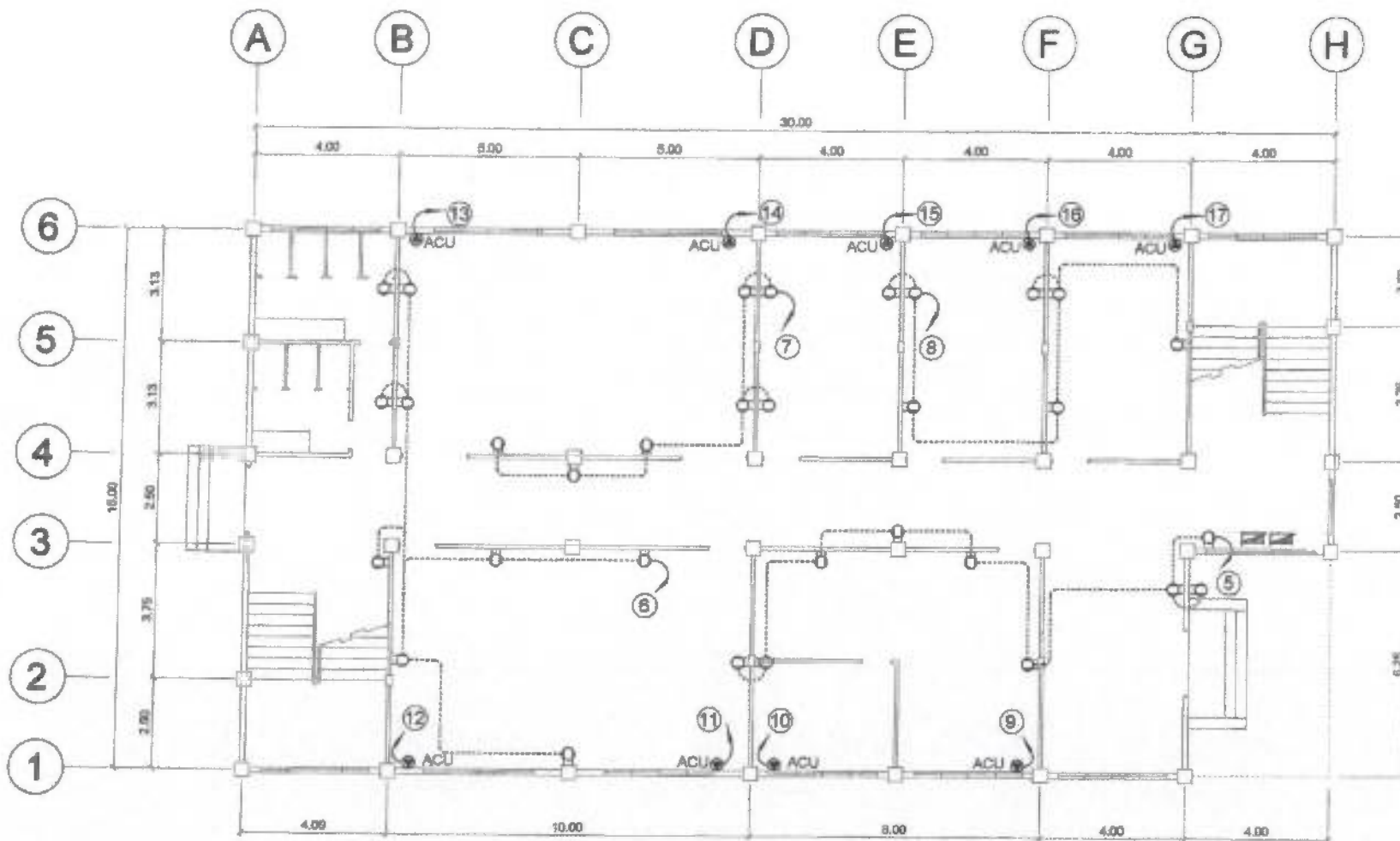
APPROVED BY:

 R. S. GRIZALDO
 OIC, OFFICE OF THE PRESIDENT

PROJECT TITLE / LOCATION:
 CONSTN. OF ADMINISTRATION BUILDING
 CVSU CARMONA CAMPUS, MADUYA CARMONA, CAVITE

IMPLEMENTING AGENCY:
 CAVITE STATE UNIVERSITY

SHT. NO.
 E - 2



GRD. FLR. POWER LAYOUT

SCALE

1 : 125 MTS.

PREPARED BY:

 RONALD P. PEÑA
 PE
 CBT

CADD BY:

 E. N. RODEROS JR.
 PEU
 CBT

END USER:

 YOLANDA M. ILAGAN
 DEAN
 CARMONA CAMPUS

ENDORSED BY:

 M. M. ESCOBAR
 OIC
 CBT

REC APPROVAL:

 M. D. ROBLES
 VRASS
 CVBU

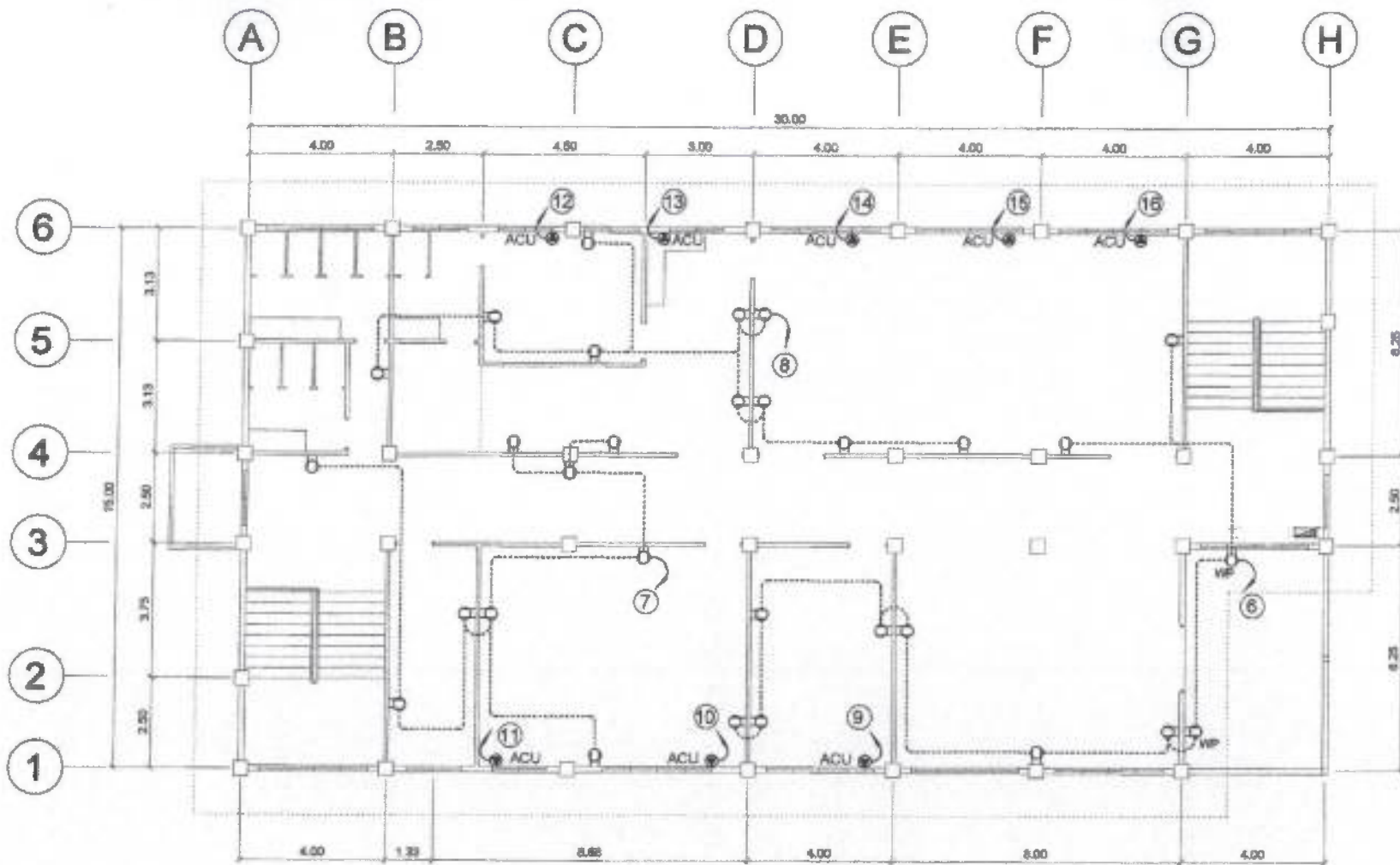
APPROVED BY:

 R. S. CRIZALDO
 OIC, OFFICE OF THE PRESIDENT

PROJECT TITLE / LOCATION:
 CONSTN. OF ADMINISTRATION BUILDING
 CVSU CARMONA CAMPUS, MADUYA CARMONA, CAVITE

IMPLEMENTING AGENCY:
 CAVITE STATE UNIVERSITY

SHT NO.
 E - 3



2ND FLR. POWER LAYOUT

SCALE

1 : 125 MTS.

PREPARED BY:

RONALD P. PENA
 CEU
 CEU

CADD BY:

E. N. RODEROS JR.
 RPLU
 CEU

END USER:

YOLANDA A. ILAGAN
 DEAN
 CARMONA CAMPUS

ENGINEERED BY:

M. M. ESCOBAR
 DIC
 CEU

REC APPROVAL:

H. D. ROBLES
 W/ASS
 CVBU

APPROVED BY:

R. S. BRIZALDO
 DIC, OFFICE OF THE PRESIDENT

PROJECT TITLE / LOCATION:
CONSTN. OF ADMINISTRATION BUILDING
 CVSU CARMONA CAMPUS, MADUYA CARMONA, CAVITE

IMPLEMENTING AGENCY:
CAVITE STATE UNIVERSITY

SHT. NO.
E - 4

SCHEDULE OF LOADS

PANEL BOARD: PANEL 1
GROUND FLOOR - ROOM

1 - Phase 2 - Wire + Ground, 230 volts surface mounted

Circuit No.	LOAD DESCRIPTION	No. OF OUTLETS	VOLTS	VOLT-AMPS	AMPS	Size of Conductor			Circuit Protection			
						NEMA 1 ENCLOSURE			AT	AF	POLE	TYPE
						sq. mm THW	sq. mm THW (S)	sq. mm				
1	LIGHTING OUTLETS	12 (77L + 27L + 27L)	230	1080	4.57	2-2.0	15	15	100	2	B-ON	
2	LIGHTING OUTLETS	11 (27L + 27L)	230	1080	4.73	2-2.0	15	15	100	2	B-ON	
3	LIGHTING OUTLETS	12 (77L + 27L)	230	1260	5.32	2-2.0	15	15	100	2	B-ON	
4	LIGHTING OUTLETS	11 (27L + 27L)	230	1100	4.78	2-2.0	15	15	100	2	B-ON	
5	CONVENIENCE OUTLETS	8	230	1080	4.73	2-3.5	15	20	100	2	B-ON	
6	CONVENIENCE OUTLETS	8	230	1080	4.70	2-3.5	15	20	100	2	B-ON	
7	CONVENIENCE OUTLETS	8	230	1080	4.70	2-3.5	15	20	100	2	B-ON	
8	CONVENIENCE OUTLETS	8	230	1080	4.70	2-3.5	15	20	100	2	B-ON	
9	ACU 1.5HP	1	230	1260	5.50	2-3.5 + 1-2.0 THW	15	20	100	2	B-ON	
10	ACU 1.5HP	1	230	1265	5.50	2-3.5 + 1-2.0 THW	15	20	100	2	B-ON	
11	ACU 1.5HP	1	230	1265	5.50	2-3.5 + 1-2.0 THW	15	20	100	2	B-ON	
12	ACU 1.5HP	1	230	1265	5.50	2-3.5 + 1-2.0 THW	15	20	100	2	B-ON	
13	ACU 1.5HP	1	230	1265	5.50	2-3.5 + 1-2.0 THW	15	20	100	2	B-ON	
14	ACU 1.5HP	1	230	1265	5.50	2-3.5 + 1-2.0 THW	15	20	100	2	B-ON	
15	ACU 1.5HP	1	230	1265	5.50	2-3.5 + 1-2.0 THW	15	20	100	2	B-ON	
16	ACU 1.5HP	1	230	1265	5.50	2-3.5 + 1-2.0 THW	15	20	100	2	B-ON	
17	ACU 1.5HP	1	230	1265	5.50	2-3.5 + 1-2.0 THW	15	20	100	2	B-ON	
18	SPACE					PROVIDE STUD OUT						
19	SPACE					PROVIDE STUD OUT						
20	SPACE					PROVIDE STUD OUT						
TOTAL			230	2085	90	2-35.0 + 1-0.0 THW	15	20	100	2	B-ON	

MAIN FEEDER and CURRENT PROTECTION COMPUTATION:

$I_{FL} = \frac{2085}{1.73} = 1203.47$ Amps

USE: FEEDER: 2-35.0 SQ. MM THW + 1-0.0 SQ. MM THW (S) in - 50 MM dia MC or Equip

$I_{SC} = \frac{2085}{1.73} = 1203.47$ Amps

USE: MAIN CB : 150 AT, 100 AF, 2P, 230V

PANEL BOARD: PANEL 1
GROUND FLOOR - ROOM

1 - Phase 2 - Wire + Ground, 230 volts surface mounted

Circuit No.	LOAD DESCRIPTION	No. OF OUTLETS	VOLTS	VOLT-AMPS	AMPS	Size of Conductor			Circuit Protection			
						NEMA 1 ENCLOSURE			AT	AF	POLE	TYPE
						sq. mm THW	sq. mm THW (S)	sq. mm				
1	LIGHTING OUTLETS	12 (77L + 27L + 27L)	230	1080	4.57	2-2.0	15	15	100	2	B-ON	
2	LIGHTING OUTLETS	11 (27L + 27L)	230	1100	4.78	2-2.0	15	15	100	2	B-ON	
3	LIGHTING OUTLETS	11 (27L + 27L + 27L)	230	1260	5.32	2-2.0	15	15	100	2	B-ON	
4	LIGHTING OUTLETS	11 (27L + 27L + 27L)	230	1100	4.78	2-2.0	15	15	100	2	B-ON	
5	LIGHTING OUTLETS	11 (27L + 27L)	230	1180	5.13	2-2.0	15	15	100	2	B-ON	
6	CONVENIENCE OUTLETS	8	230	1080	4.73	2-3.5	15	20	100	2	B-ON	
7	CONVENIENCE OUTLETS	8	230	1080	4.70	2-3.5	15	20	100	2	B-ON	
8	CONVENIENCE OUTLETS	8	230	1080	4.70	2-3.5	15	20	100	2	B-ON	
9	ACU 1.5HP	1	230	1265	5.50	2-3.5 + 1-2.0 THW	15	20	100	2	B-ON	
10	ACU 1.5HP	1	230	1265	5.50	2-3.5 + 1-2.0 THW	15	20	100	2	B-ON	
11	ACU 1.5HP	1	230	1265	5.50	2-3.5 + 1-2.0 THW	15	20	100	2	B-ON	
12	ACU 1.5HP	1	230	1265	5.50	2-3.5 + 1-2.0 THW	15	20	100	2	B-ON	
13	ACU 1.5HP	1	230	1265	5.50	2-3.5 + 1-2.0 THW	15	20	100	2	B-ON	
14	ACU 1.5HP	1	230	1265	5.50	2-3.5 + 1-2.0 THW	15	20	100	2	B-ON	
15	ACU 1.5HP	1	230	1265	5.50	2-3.5 + 1-2.0 THW	15	20	100	2	B-ON	
16	ACU 1.5HP	1	230	1265	5.50	2-3.5 + 1-2.0 THW	15	20	100	2	B-ON	
17	SPACE					PROVIDE STUD OUT						
18	SPACE					PROVIDE STUD OUT						
TOTAL			230	2150	94	2-35.0 + 1-0.0 THW	15	20	100	2	B-ON	

MAIN FEEDER and CURRENT PROTECTION COMPUTATION:

$I_{FL} = \frac{2150}{1.73} = 1242.77$ Amps

USE: FEEDER: 2-35.0 SQ. MM THW + 1-0.0 SQ. MM THW (S) in - 50 MM dia MC or Equip

$I_{SC} = \frac{2150}{1.73} = 1242.77$ Amps

USE: MAIN CB : 150 AT, 100 AF, 2P, 230V

PANEL BOARD: MAIN DISTRIBUTION PANEL (MDP)
PHASE 1 AND PHASE 2

1 - Phase 2 - Wire + Ground, 230 volts surface mounted

Circuit No.	LOAD DESCRIPTION	VOLTS	VOLT-AMPS	AMPS	Size of Conductor			Circuit Protection			
					NEMA 1 ENCLOSURE			AT	AF	POLE	TYPE
					sq. mm THW	sq. mm THW (S)	sq. mm				
1	LIGHTING PANEL: GRD. BLD.	230	2085	90	2-35.0 + 1-0.0 THW	15	20	100	2	B-ON	
2	LIGHTING PANEL: 277V BLD.	230	1080	4.73	2-3.5	15	20	100	2	B-ON	
3	SPACE										
4	SPACE										
TOTAL			230	3165	134	2-35 THW	1-0.0	20	100	2	B-ON

MAIN FEEDER and CURRENT PROTECTION COMPUTATION:

$I_{FL} = \frac{3165}{1.73} = 1830$ Amps

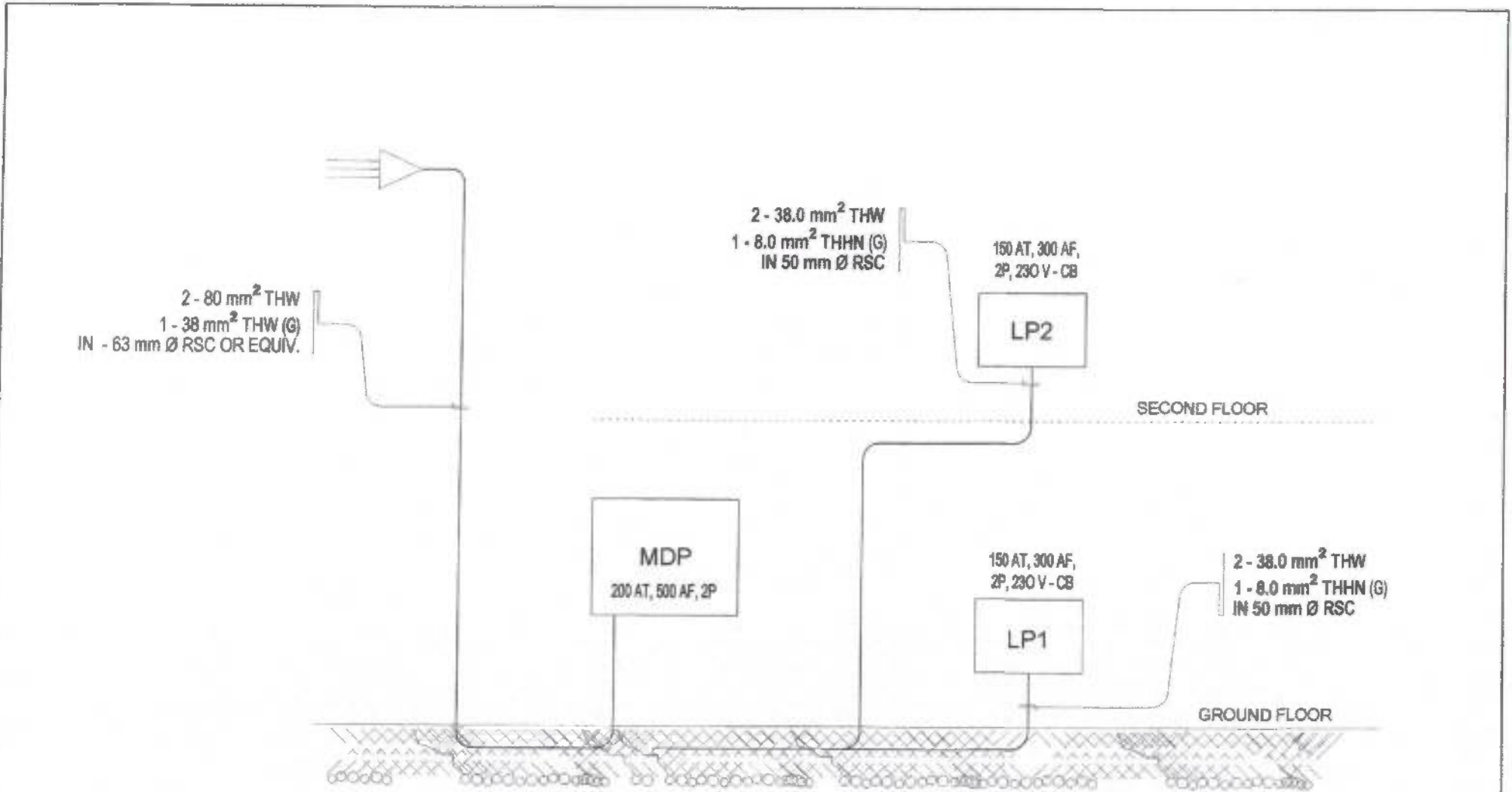
USE: FEEDER: 2-40 SQ. MM THW + 1-30 SQ. MM THW (S) in - 50 MM dia MC or Equip

$I_{SC} = \frac{3165}{1.73} = 1830$ Amps

USE: MAIN CB : 200 AT, 300 AF, 2P, 230V

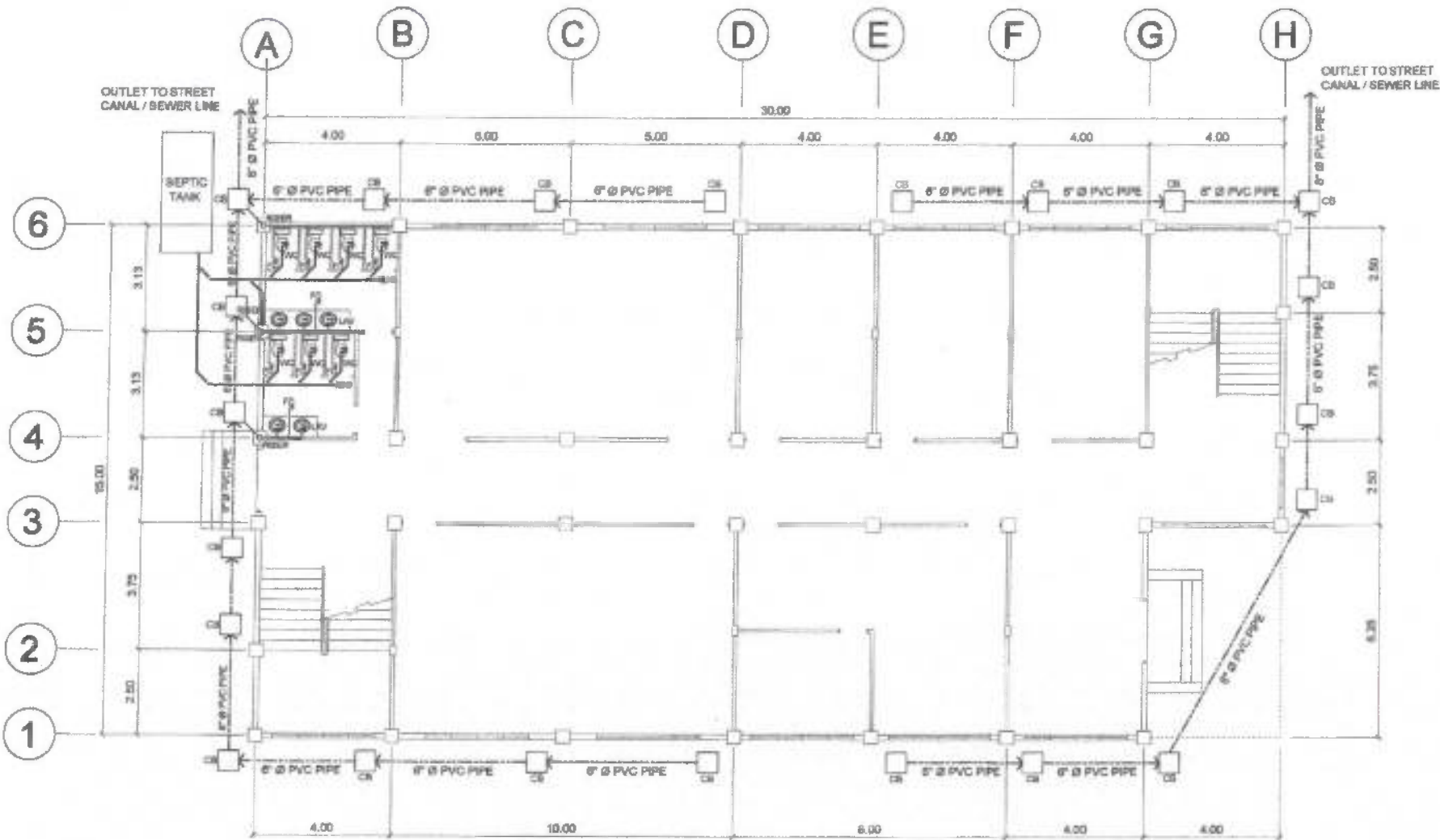
PREPARED BY:
Ronald P. Peña
RONALD P. PEÑA
RFU CBT

CADD BY: <i>E. N. Roderos Jr.</i> E. N. RODEROS JR. RFU CBT	END USER: <i>Yolanda A. Ilagan</i> YOLANDA A. ILAGAN DEAN CARMONA CAMPUS	ENDORSED BY: <i>M. M. Ebcobar</i> M. M. EBCOBAR OIC CBT	SEC APPROVAL: <i>H. D. Robles</i> H. D. ROBLES VPASS CIVIL	APPROVED BY: <i>R. S. Orizaldo</i> R. S. ORIZALDO OIC., OFFICE OF THE PRESIDENT	PROJECT TITLE / LOCATION: CONSTN. OF ADMINISTRATION BUILDING CVSU CARMONA CAMPUS, MADUYA CARMONA, CAVITE	IMPLEMENTING AGENCY: CAVITE STATE UNIVERSITY	SH. NO. E-5
---	--	---	--	--	--	---	----------------



SINGLE LINE DIAGRAM

PREPARED BY: <i>Ronald P. Bena</i> RONALD P. BENA RPU CBT		ENDORSED BY: <i>M. M. Escobar</i> M. M. ESCOBAR DCL CBT		REC APPROVAL: <i>H. O. Robles</i> H. O. ROBLES VPASS CVSU		APPROVED BY: <i>R. S. Orizaldo</i> R. S. ORIZALDO DCL, OFFICE OF THE PRESIDENT		PROJECT TITLE / LOCATION: PROPOSED ADMINISTRATION BUILDING CVSU CARMONA CAMPUS, MADUYA CARMONA, CAVITE	IMPLEMENTING AGENCY: CAVITE STATE UNIVERSITY	BHT. NO. E - 6
CADD BY: <i>E. N. Roderos Jr.</i> E. N. RODEROS JR. RPU CBT		END USER: <i>Yokanda E. Ilagan</i> YOKANDA E. ILAGAN DEAN CARMONA CAMPUS		APPROVED BY: <i>R. S. Orizaldo</i> R. S. ORIZALDO DCL, OFFICE OF THE PRESIDENT		PROJECT TITLE / LOCATION: PROPOSED ADMINISTRATION BUILDING CVSU CARMONA CAMPUS, MADUYA CARMONA, CAVITE		IMPLEMENTING AGENCY: CAVITE STATE UNIVERSITY	BHT. NO. E - 6	



STORM DRAINAGE & SEWER LAYOUT

SCALE 1 : 125 MTS.

PREPARED BY: <i>S. B. Bayot Jr.</i> S. B. BAYOT JR. PPU CBT
CADD BY: <i>E. N. Roderos Jr.</i> E. N. RODEROS JR. PPU CBT

END USER:
Yolanda B. Ilagan
YOLANDA B. ILAGAN
DEAN CARMONA CAMPUS

ENDORSED BY:
M. M. Escobar
M. M. ESCOBAR
OIC CBT

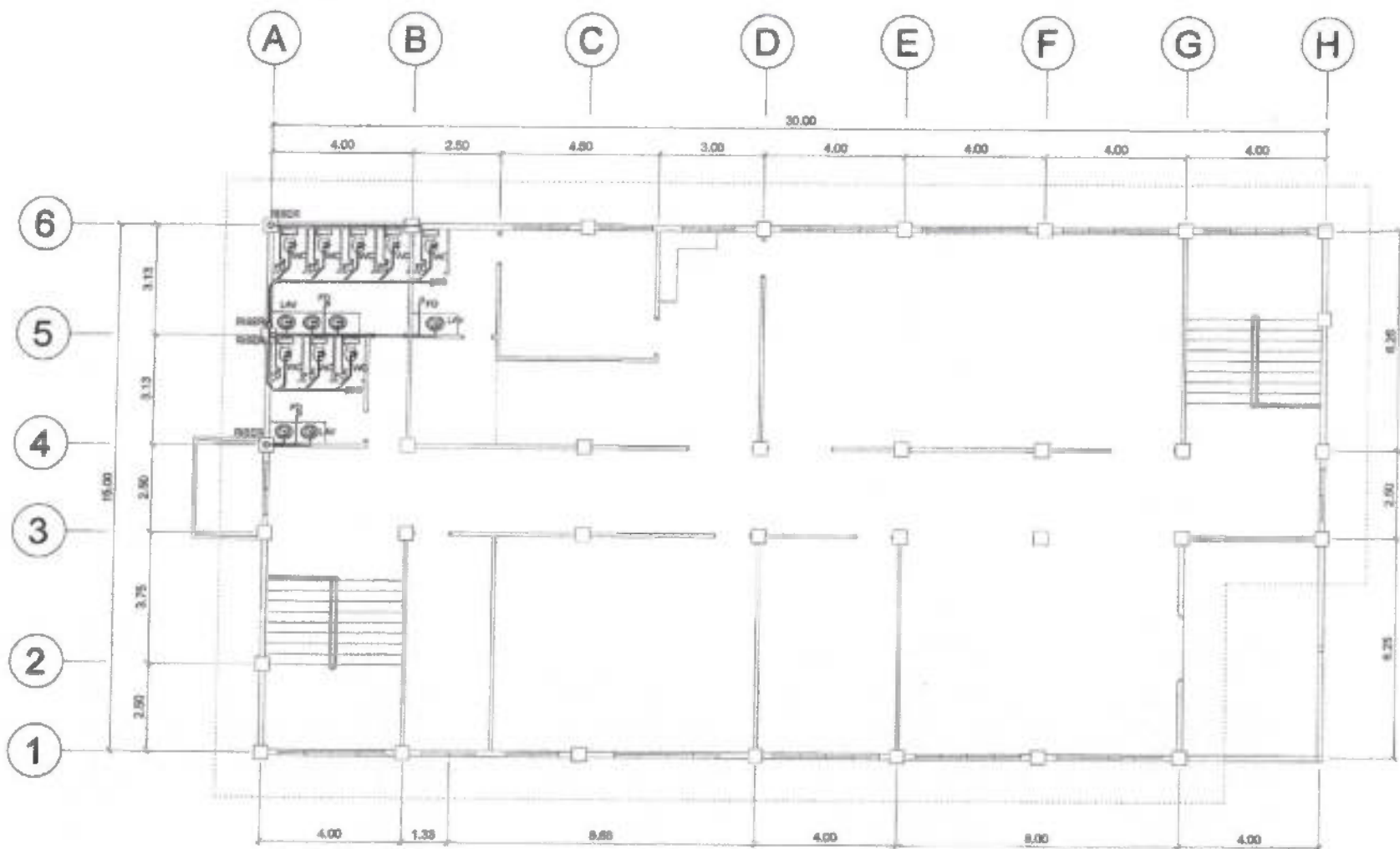
REC APPROVAL:
H. D. Robles
H. D. ROBLES
VP/AS CYSU

APPROVED BY:
R. S. Grizaldo
R. S. GRIZALDO
OIC, OFFICE OF THE PRESIDENT

PROJECT TITLE / LOCATION:
CONSTN. OF ADMINISTRATION BUILDING
CYSU CARMONA CAMPUS, MADUYA CARMONA, CAVITE

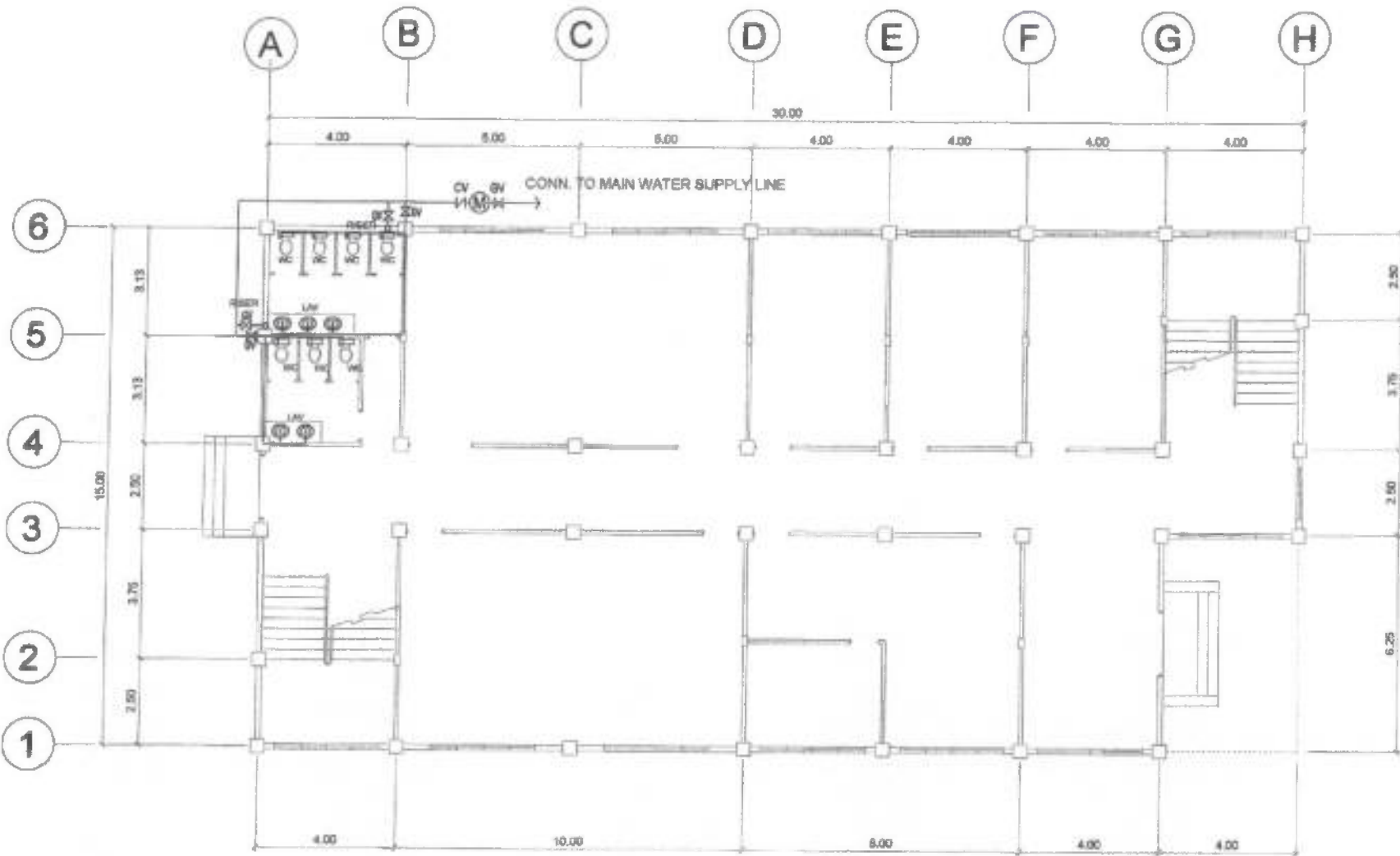
IMPLEMENTING AGENCY:
CAVITE STATE UNIVERSITY

SHT. NO.
P - 1



2ND FLOOR SANITARY SEWER LAYOUT
 SCALE 1 : 125 MTS.

PREPARED BY: S. B. BAYOT JR. PPU CBT		END USER: <i>Yo Landa Ilagan</i> YO LANDA ILAGAN DEAN CARMONA CAMPUS		ENDORSED BY: <i>M. M. Escobar</i> M. M. ESCOBAR DTC CBT		REC APPROVAL: <i>H. D. Robles</i> H. D. ROBLES VPASS CIVSU		APPROVED BY: <i>R. S. Orizaldo</i> R. S. ORIZALDO DTC, OFFICE OF THE PRESIDENT		PROJECT TITLE / LOCATION: CONSTN. OF ADMINISTRATION BUILDING CVSU CARMONA CAMPUS, MADUYA CARMONA, CAVITE		IMPLEMENTING AGENCY: CAVITE STATE UNIVERSITY		SHT. NO. P - 2	
--	--	---	--	--	--	---	--	--	--	---	--	--	--	--------------------------	--



GROUND FLOOR WATER LINE LAYOUT

SCALE 1 : 125 MTS.

PREPARED BY:
S. B. BAYOT JR.
 PPLU CBT

DADO BY:
E. N. RODRIGOS JR.
 PPLU CBT

END USER:
YOLANDA A. ILAGAN
 DEAN CARMONA CAMPUS

ENDORSED BY:
M. M. ESCOBAR
 OIC CBT

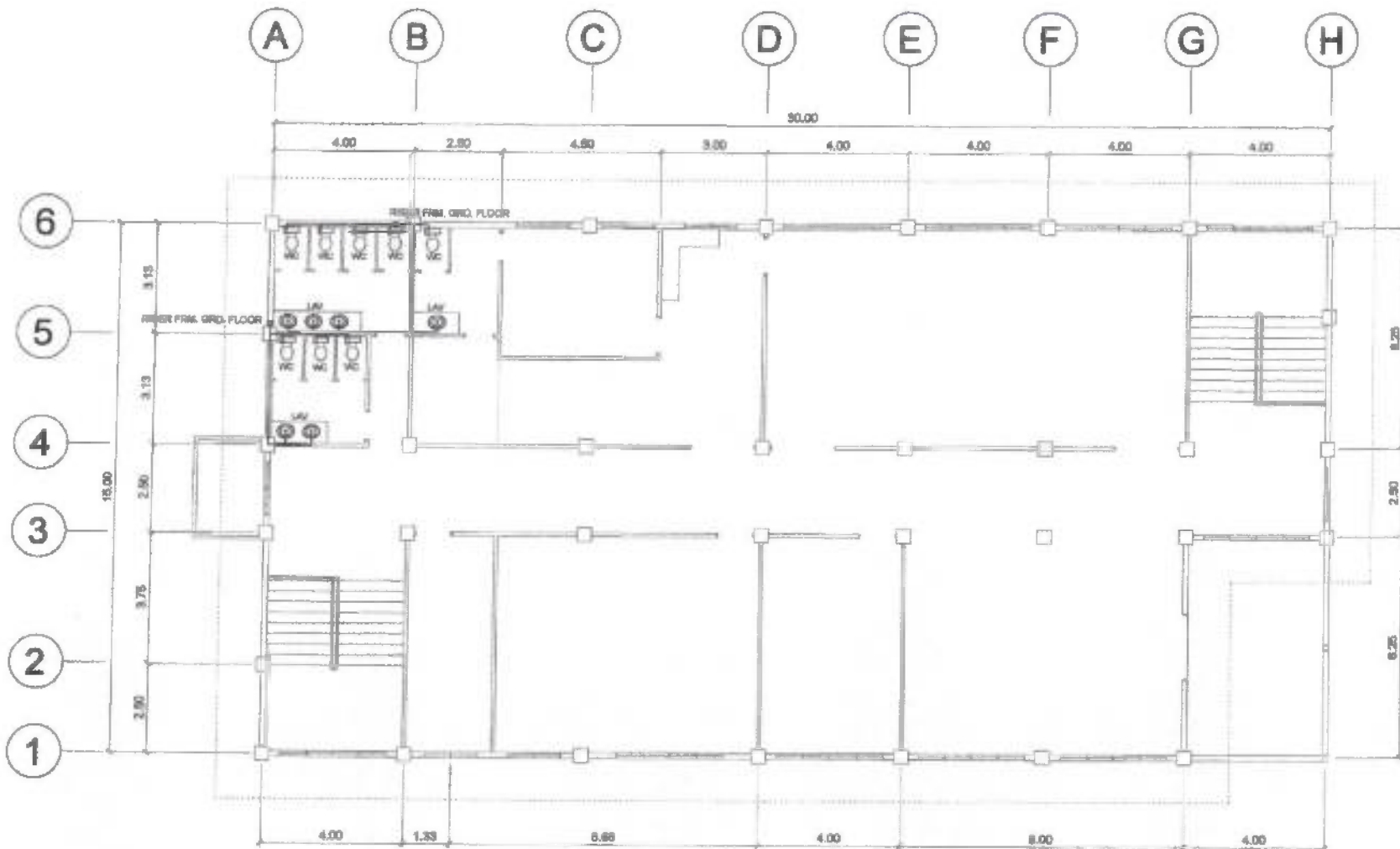
REC APPROVAL:
H. D. ROSLES
 WPAES OMBU

APPROVED BY:
R. S. ORTIZALDO
 OIC, OFFICE OF THE PRESIDENT

PROJECT TITLE / LOCATION:
 CONSTN. OF ADMINISTRATION BUILDING
 CDSU CARMONA CAMPUS, MADUYA CARMONA, CAVITE

IMPLEMENTING AGENCY:
 CAVITE STATE UNIVERSITY

SHT. NO.
 P - 3

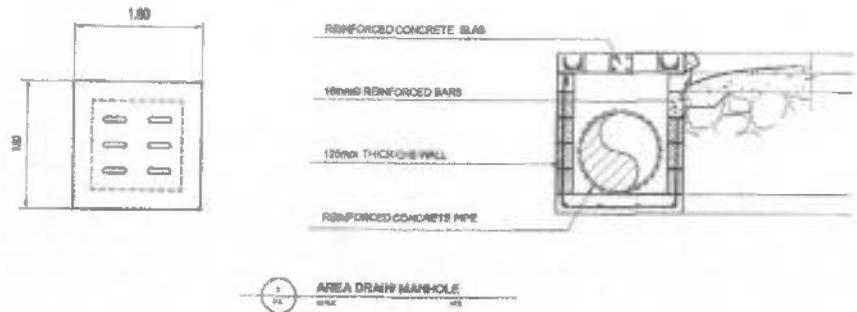
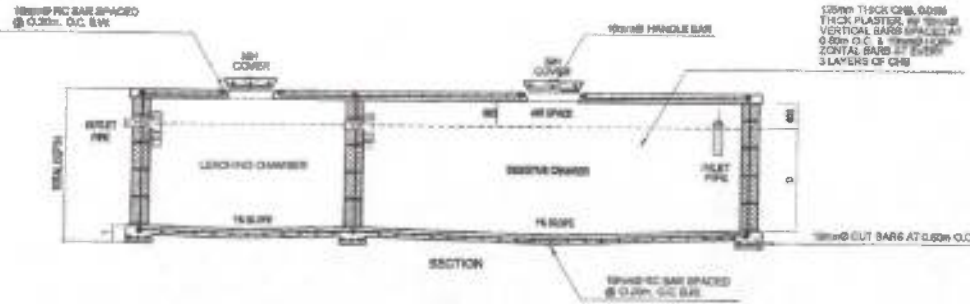
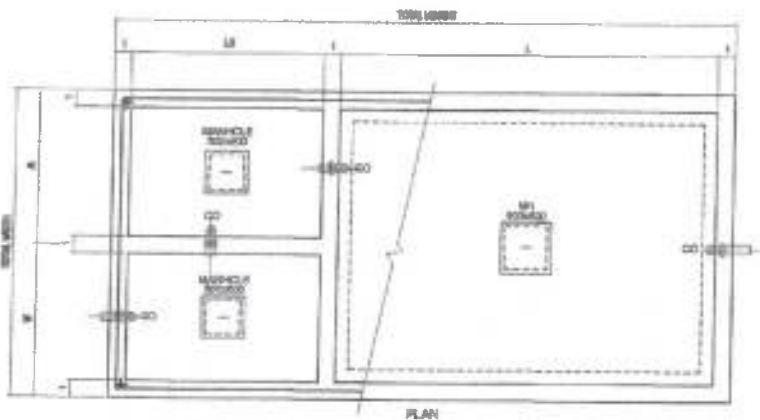


2ND FLOOR WATER LINE LAYOUT

SCALE

1 : 125 MTS.

PREPARED BY: S. B. BAYOT JR. PPU CBT		END USER: <i>Y. Milagan</i> YOKANDA MILAGAN DEAN CARMONA CAMPUS		ENDORSED BY: <i>M. M. Escobar</i> M. M. ESCOBAR CIC CBT		REC APPROVAL: <i>H. D. Robles</i> H. D. ROBLES VPASS CVSU		APPROVED BY: <i>R. S. Crizaldo</i> R. S. CRIZALDO CIC, OFFICE OF THE PRESIDENT		PROJECT TITLE / LOCATION: CONSTN. OF ADMINISTRATION BUILDING CVSU CARMONA CAMPUS, MADUYA CARMONA, CAVITE		IMPLEMENTING AGENCY: CAVITE STATE UNIVERSITY		SHT. NO. P - 4	
CADD BY: <i>E. N. Roderos Jr.</i> E. N. RODEROS JR. PPU CBT															



SEPTIC TANK DIMENSION					
LENGTH (M)	LT	TOTAL LENGTH	WIDTH (M)	TOTAL WIDTH	DEPTH (M)
400	100	500	100	200	100/100

DETAIL OF SEPTIC TANK

PREPARED BY:
S. B. BAYOT JR.
 PRU CBT

END USER:
YOLANDA A. ILAGAN
 DEAN CARMONA CAMPUS

ENDORSED BY:
M.M. ESCOBAR
 CBT CBT

REC APPROVAL:
M. D. ROBLES
 PRU CBT

APPROVED BY:
R. S. CRIZALDO
 OIC, OFFICE OF THE PRESIDENT

PROJECT TITLE / LOCATION:
CONSTN. OF ADMINISTRATION BUILDING
 CYSU CARMONA CAMPUS, MADUYA CARMONA, CAVITE

IMPLEMENTING AGENCY:
CAVITE STATE UNIVERSITY

SHT. NO.
P - 5