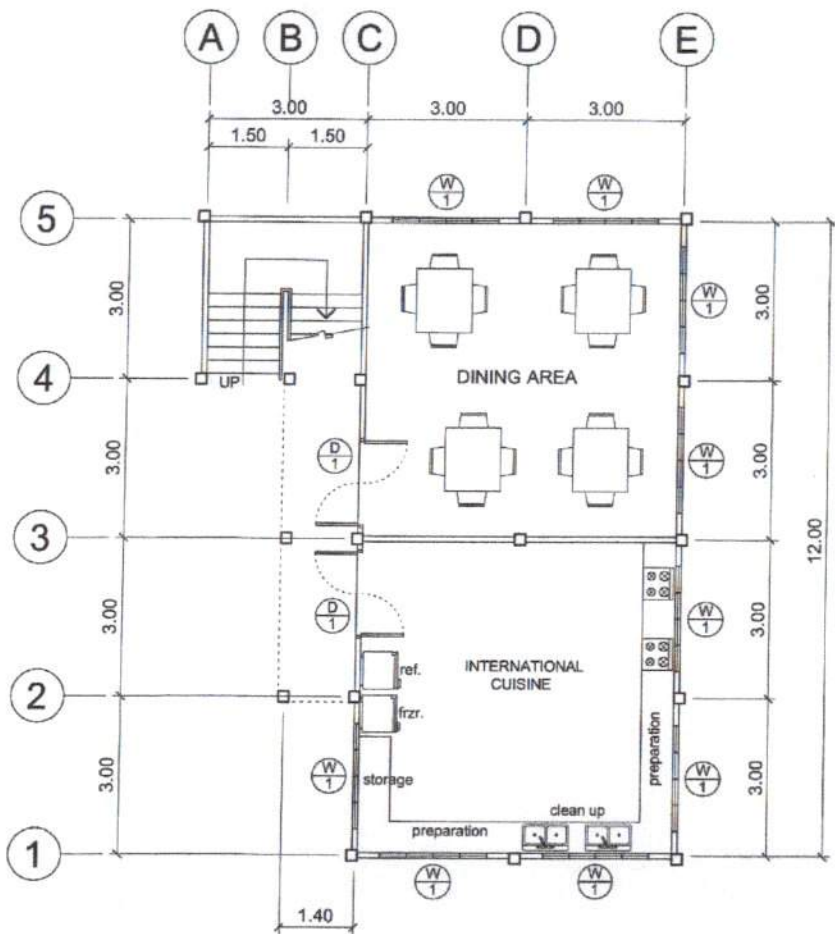
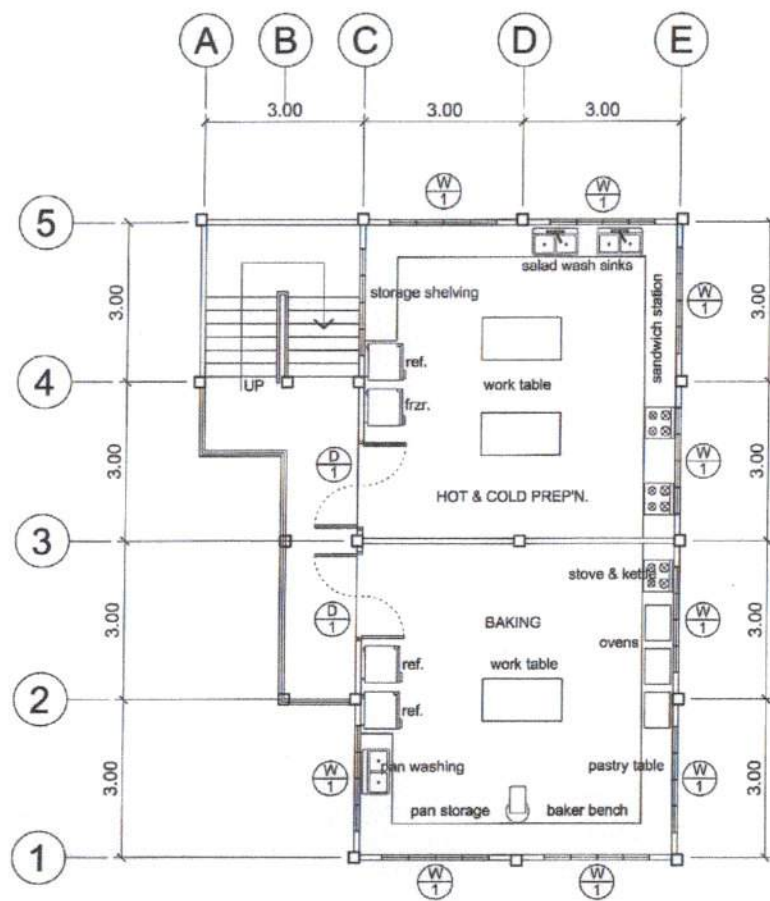


PREPARED BY AR. E. N. RODEROS JR. DEAN	ENLIGHTENED M. A. MOJICA INM CAMPUS	ENDORSED BY O. S. DE LOS REYES DIRECTOR PLANNING OFFICE	REC. APPROVED G. A. POLINGA VP/AS	APPROVED BY D. ROBLES PRES CVSU	PROJECT ALLOCATION PROPOSED 3 STOREY HRM LAB. BUILDING INM CAMPUS CVSU	IMPLEMENTING AGENCY CAVITE STATE UNIVERSITY	SHEET NO. A - 1
--	---	---	---	--	--	--	--------------------



**GROUND FLOOR PLAN**

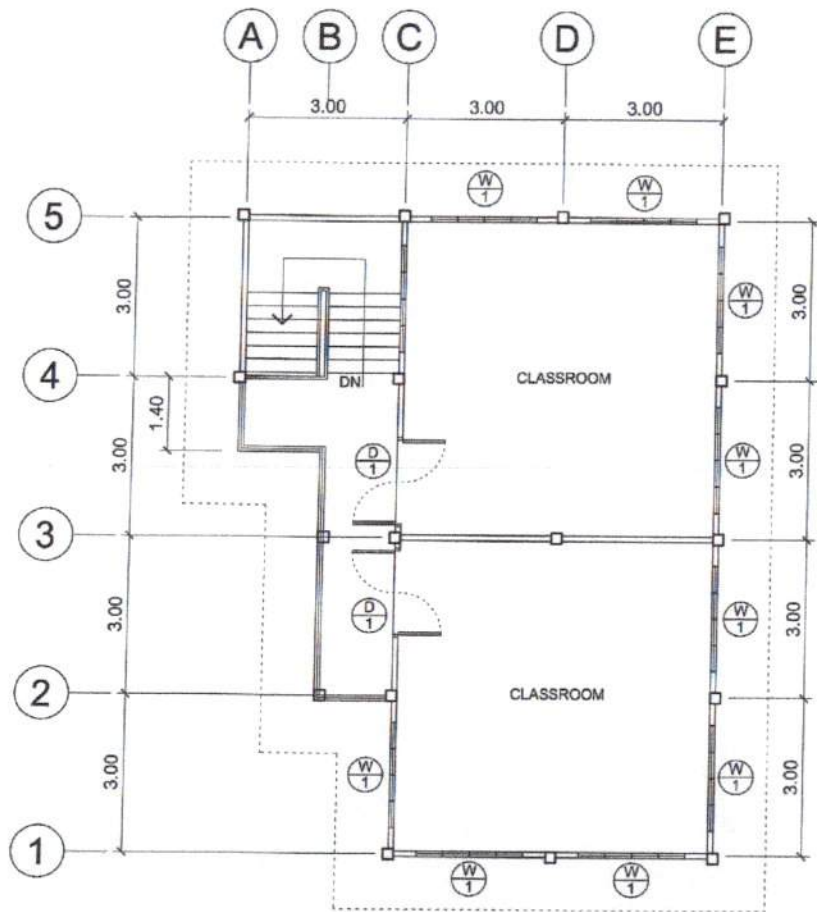
SCALE 1 : 100 MTS.



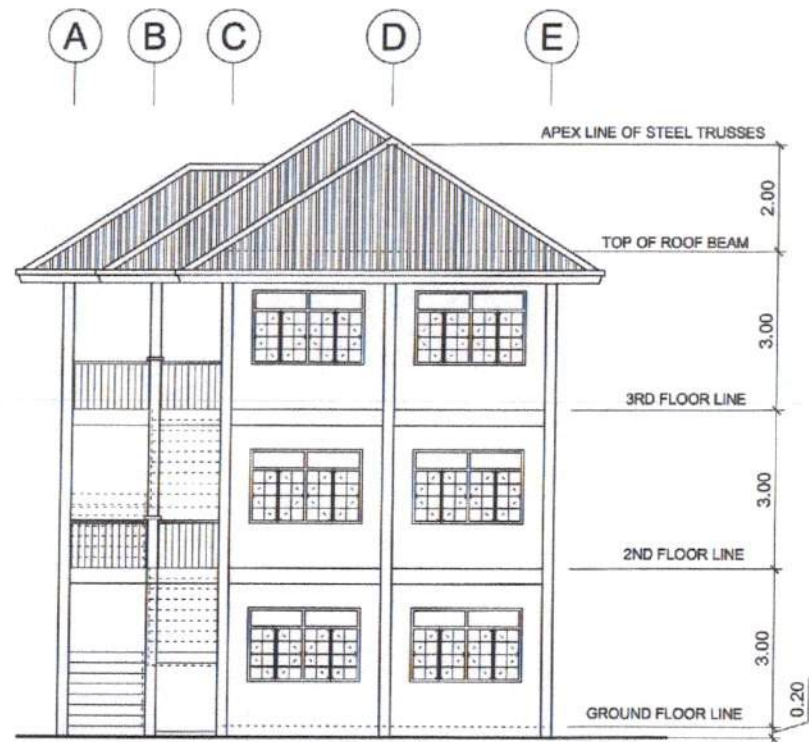
**SECOND FLOOR PLAN**

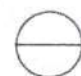
SCALE 1 : 100 MTS.

PREPARED BY:	END USER:	ENDORSED BY:	REC. APPROVAL:	APPROVED BY:	PROJECT TITLE/ LOCATION:	IMPLEMENTING AGENCY	SHT NO.:
AR. E. N. RODRIGOS JR.	M. A. MOJICA DEAN IMUS CAMPUS	O. B. DE LOS REYES DIRECTOR PLANNING OFFICE	C. A. POLINGA VPASS CVSU	H. D. ROBLES PRES CVSU	PROPOSED 3 STOREY HRM LAB. BUILDING CVSU IMUS CAMPUS	CAVITE STATE UNIVERSITY	A - 2

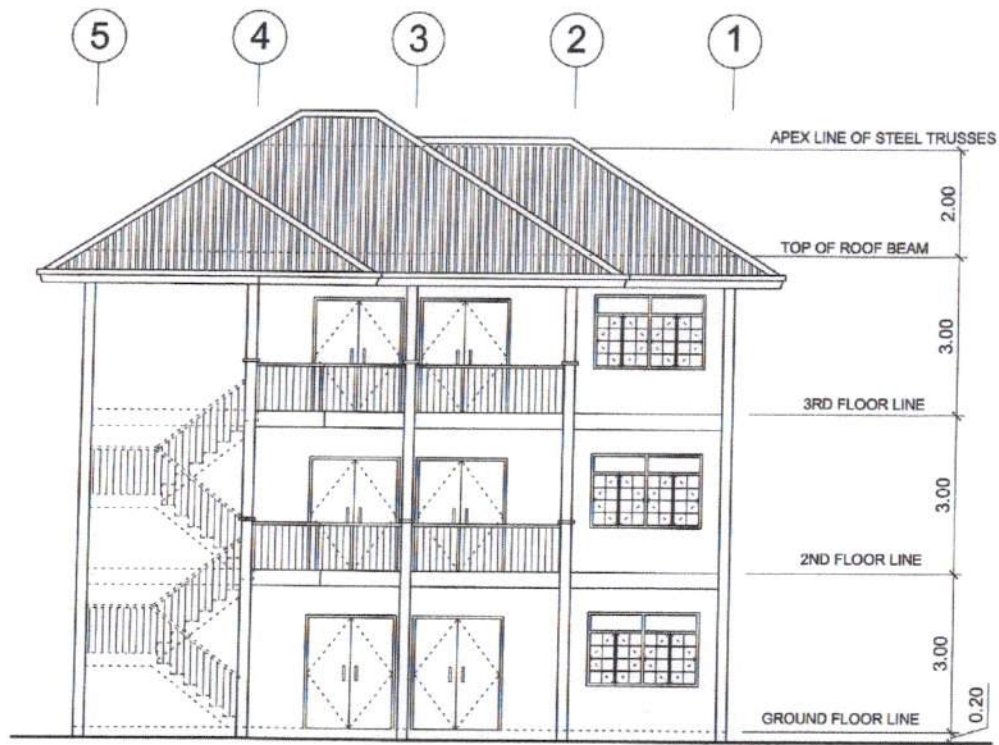




**THIRD FLOOR PLAN**  
 SCALE 1 : 100 MTS.



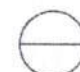

**FRONT ELEVATION**  
 SCALE 1 : 100 MTS.

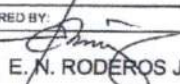
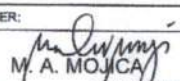
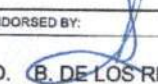

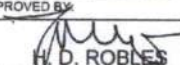
PREPARED BY:	END USER:	ENDORSED BY:	REC. APPROVAL:	APPROVED BY:	PROJECT TITLE/LOCATION:	IMPLEMENTING AGENCY:	SHT NO.:
AR. E. N. RODEFOS JR. DEAN	M. A. MOJICA IMUS CAMPUS	O. B. DE LOS REYES DIRECTOR PLANNING OFFICE	C. A. POLINGA VRASS CVSU	H. D. ROBLES PRES CVSU	PROPOSED 3 STOREY HRM LAB. BUILDING CVSU IMUS CAMPUS	CAVITE STATE UNIVERSITY	A - 3

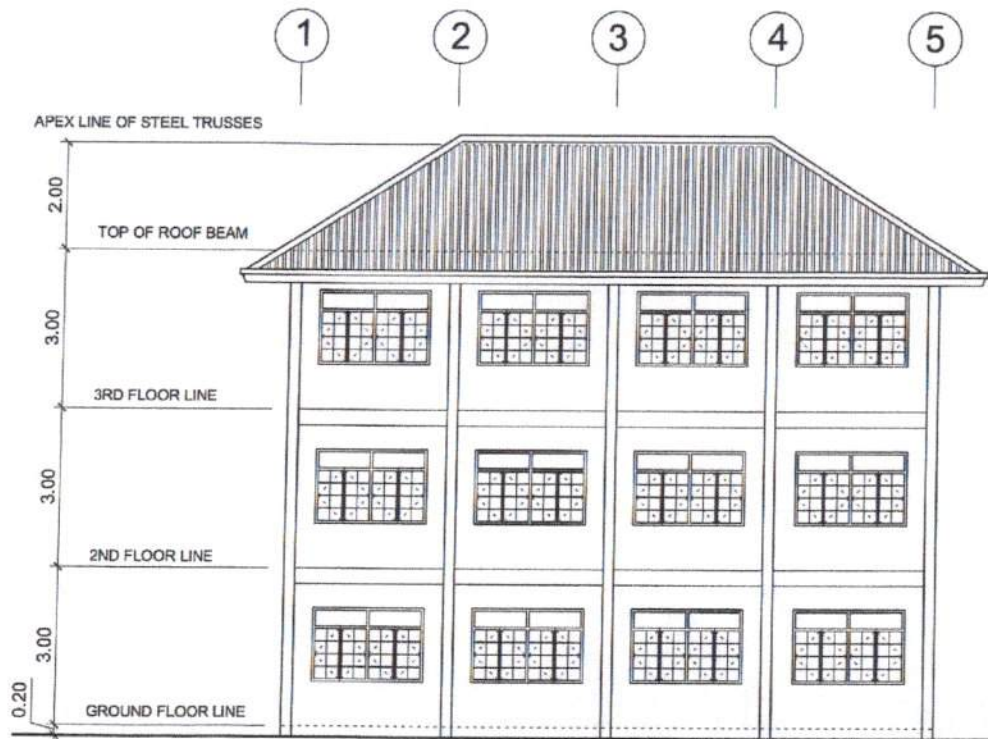



**LEFT SIDE ELEVATION**  
 SCALE 1: 100 MTS.

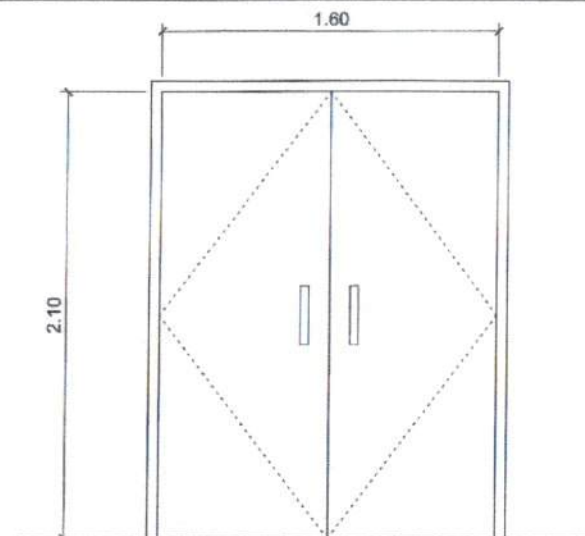



**REAR ELEVATION**  
 SCALE 1: 100 MTS.

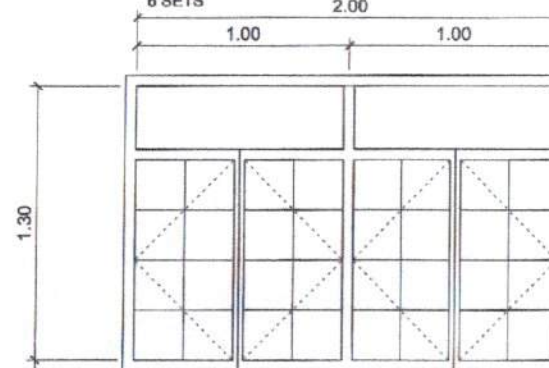
PREPARED BY:  <b>AR. E. N. RODEROS JR.</b>	END USER:  <b>M. A. MOJICA</b> DEAN IMUS CAMPUS	ENDORSED BY:  <b>O. B. DE LOS REYES</b> DIRECTOR PLANNING OFFICE	REC. APPROVAL:  <b>G. A. POLINGA</b> V.P.R.S.S. CVSU	APPROVED BY:  <b>H. D. ROBLES</b> PRES CVSU	PROJECT TITLE/LOCATION: <b>PROPOSED 3 STOREY          HRM LAB. BUILDING</b> CVSU IMUS CAMPUS	IMPLEMENTING AGENCY <b>CAVITE STATE UNIVERSITY</b>	SHT NO: <b>A - 4</b>
---	--	--	--	--	--	---	-------------------------



RIGHT SIDE ELEVATION  
SCALE 1 : 100 MTS.



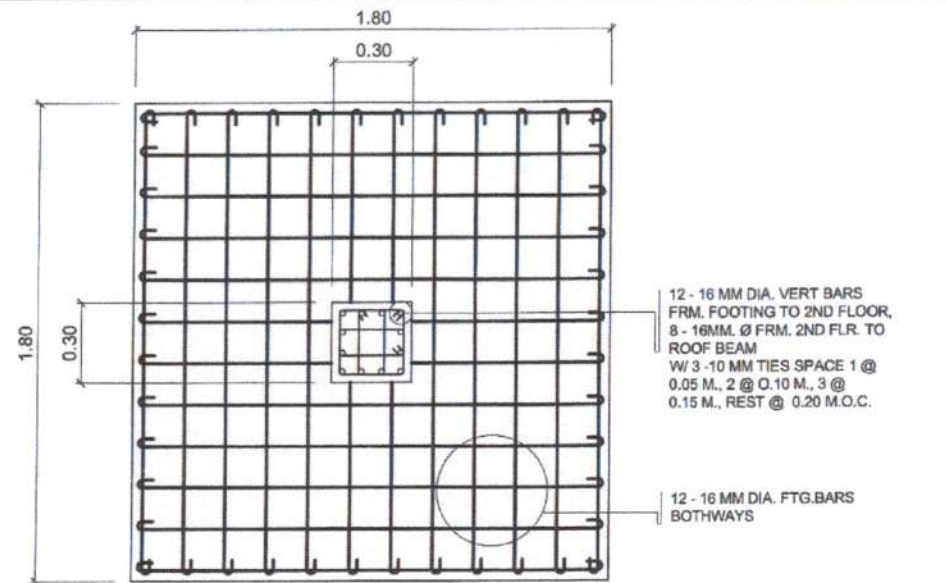
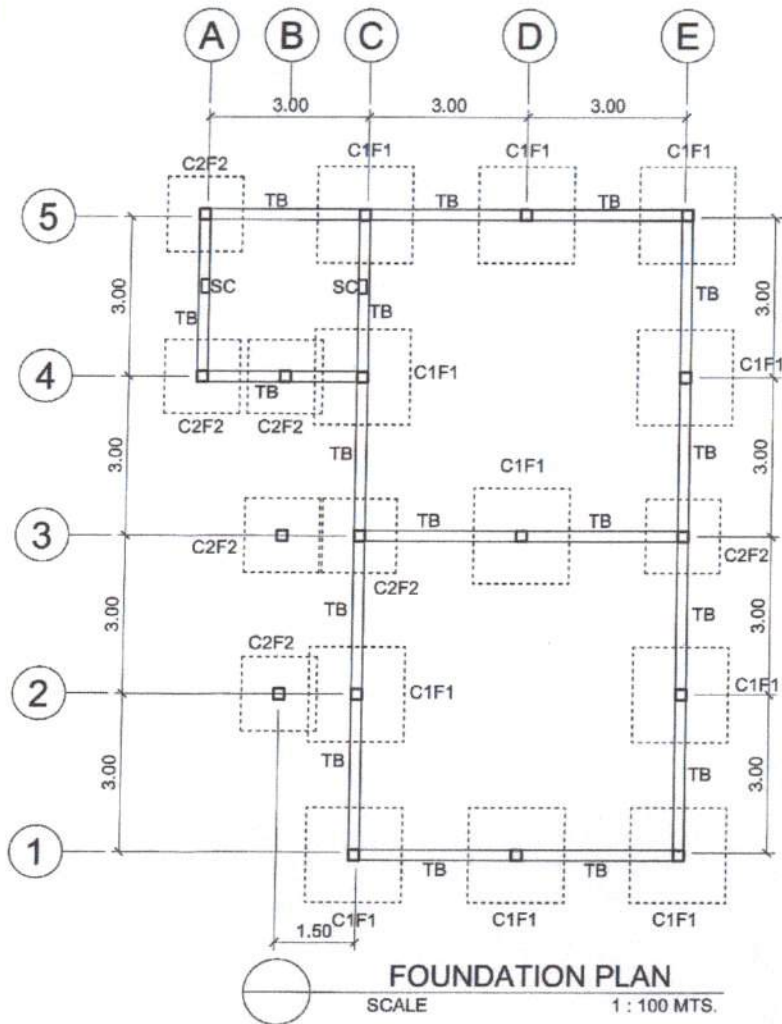
D 1  
ALUMINUM DOOR COMPLETE W /  
ALL ACCESSORIES W / 1/4" THK COLORED GLASS  
ON COLORED POWDER COATED FINISH  
ALUMINUM FRAMING  
6 SETS



SCHEDULE OF DOORS & WINDOWS  
SCALE 1 : 25 MTS.

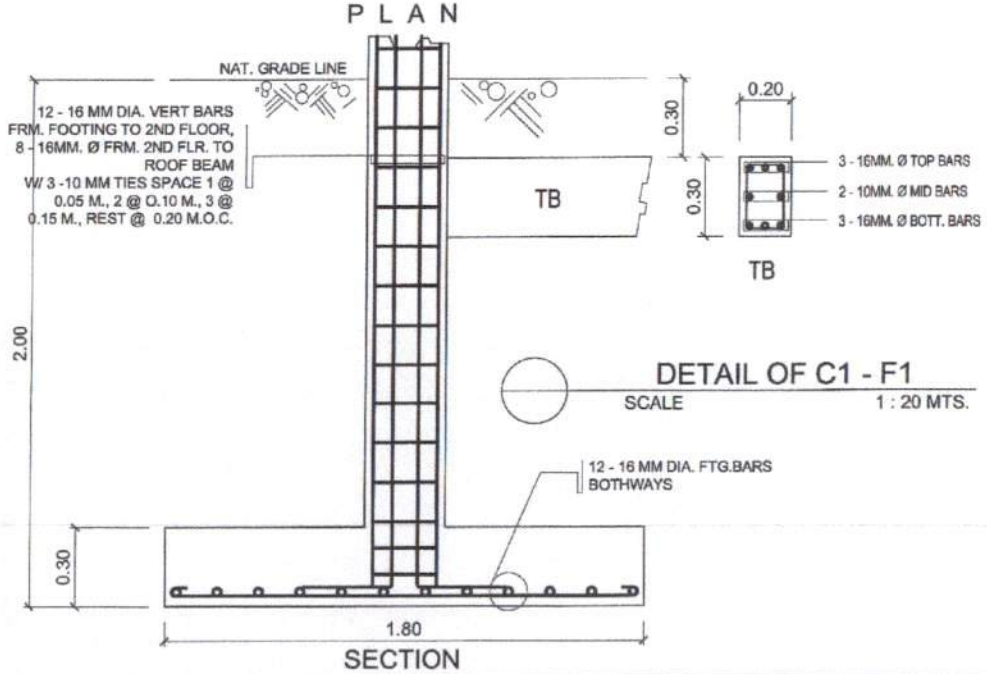
W 1  
STEEL CASEMENT WINDOW COMPLETE W /  
ALL ACCESSORIES W / 1/4" THK CLEAR GLASS  
27 SETS

PREPARED BY: AR. E. N. RODEROS JR.	END USER: M. A. MOJICA DEAN MUS CAMPUS	ENDORSED BY: O. B. DE LOS REYES DIRECTOR PLANNING OFFICE	REC. APPROVAL: A. POLINGA VP ASS CVSU	APPROVED BY: H. D. ROBLES PRES CVSU	PROJECT TITLE/LOCATION: PROPOSED 3 STOREY HRM LAB. BUILDING CVSU IMUS CAMPUS	IMPLEMENTING AGENCY: CAVITE STATE UNIVERSITY	SHT NO: A - 4
---------------------------------------	---	---	--	--	--	---	------------------



12 - 16 MM DIA. VERT BARS  
FRM. FOOTING TO 2ND FLOOR,  
8 - 16MM. Ø FRM. 2ND FLR. TO  
ROOF BEAM  
W/ 3 - 10 MM TIES SPACE 1 @  
0.05 M., 2 @ 0.10 M., 3 @  
0.15 M., REST @ 0.20 M.O.C.

12 - 16 MM DIA. FTG. BARS  
BOTHWAYS



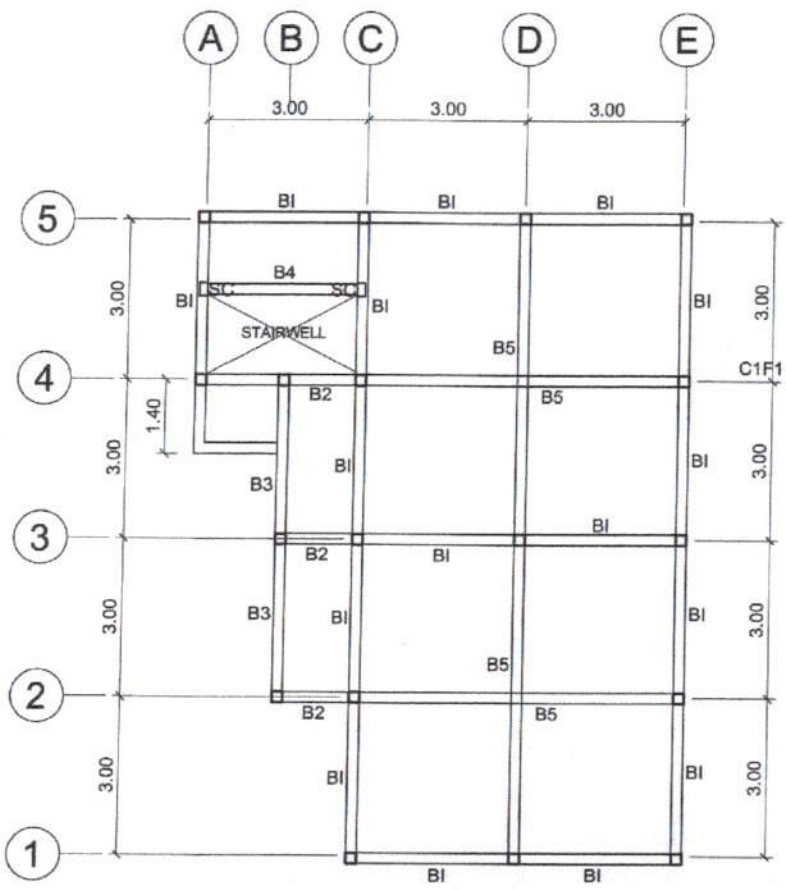
12 - 16 MM DIA. VERT BARS  
FRM. FOOTING TO 2ND FLOOR,  
8 - 16MM. Ø FRM. 2ND FLR. TO  
ROOF BEAM  
W/ 3 - 10 MM TIES SPACE 1 @  
0.05 M., 2 @ 0.10 M., 3 @  
0.15 M., REST @ 0.20 M.O.C.

3 - 16MM. Ø TOP BARS  
2 - 10MM. Ø MID BARS  
3 - 16MM. Ø BOT. BARS

**DETAIL OF C1 - F1**

SCALE 1 : 20 MTS.

CADD BY: <i>E. N. Roderos Jr.</i> E. N. RODEROS JR.		END USER: <i>M. A. Mojica</i> M. A. MOJICA DEAN IMUS CAMPUS		ENDORSED BY: <i>O. B. De Los Reyes</i> O. B. DE LOS REYES DIRECTOR PLANNING OFFICE		REC. APPROVAL: <i>K. Polunga</i> K. POLUNGA VP ASS. CVSU		APPROVED BY: <i>H. D. Robles</i> H. D. ROBLES PRES CVSU		PROJECT TITLE/LOCATION: PROPOSED 3 STOREY HRM LAB. BUILDING CVSU IMUS CAMPUS		IMPLEMENTING AGENCY CAVITE STATE UNIVERSITY		SHT NO: S - 1	
---	--	--	--	---	--	---	--	--	--	---	--	--	--	------------------	--



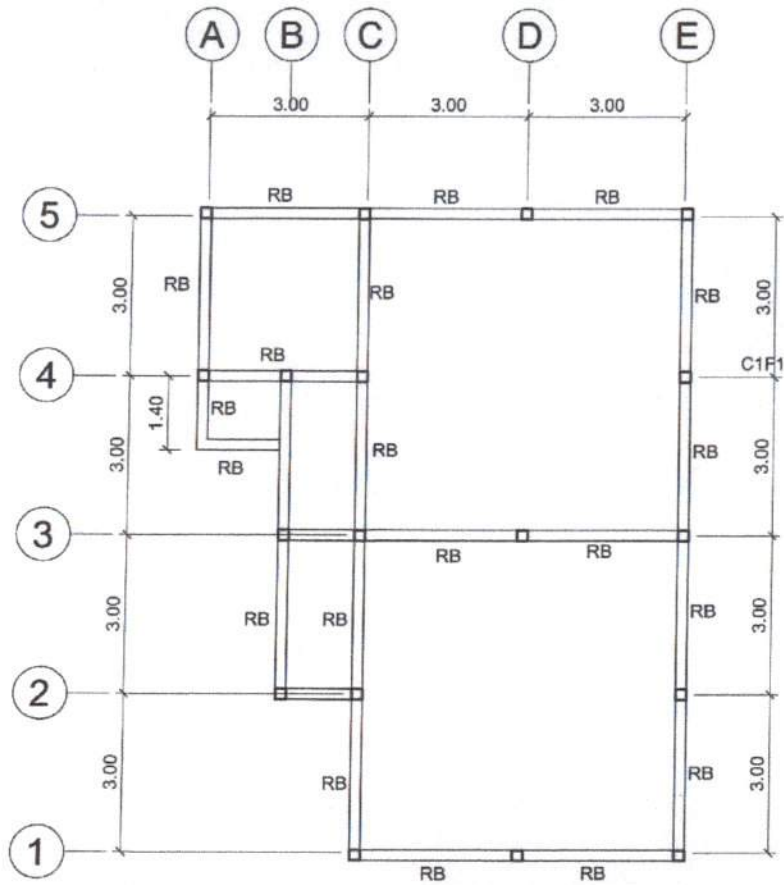
### SCHEDULE OF BEAMS

BEAM	DIMENSION	SUPPORT		MID-SPAN		BAR ARRANGEMENT		REMARKS	REMARKS
		TOP	BOTTOM	TOP	BOTTOM	SUPPORT	MID-SPAN		
B-1	200mm X 400mm	3 - 16 MM Ø	2 - 16 MM Ø	2 - 16 MM Ø	3 - 16 MM Ø			10MM Ø STIRRUPS 4 @0.05, 8 @0.075 8 @0.10, REST@ 0.15 O.C.	USE 2-10MM STIFFENER BARS
B-2	200mm X 300mm	5 - 16 MM Ø	3 - 16 MM Ø	5 - 16 MM Ø	3 - 16 MM Ø			- DO -	- DO -
B-3	200mm X 300mm	3 - 16 MM Ø	5 - 16 MM Ø	3 - 16 MM Ø	5 - 16 MM Ø			- DO -	- DO -
B-4	200mm X 300mm	2 - 16 MM Ø	3 - 16 MM Ø	2 - 16 MM Ø	3 - 16 MM Ø			- DO -	- DO -
B-5	250mm X 400mm	5 - 20 MM Ø	3 - 20 MM Ø	3 - 20 MM Ø	5 - 20 MM Ø			- DO -	- DO -

TYPICAL 2ND - 3RD FLOOR BEAM PLAN  
SCALE 1 : 100 MTS.

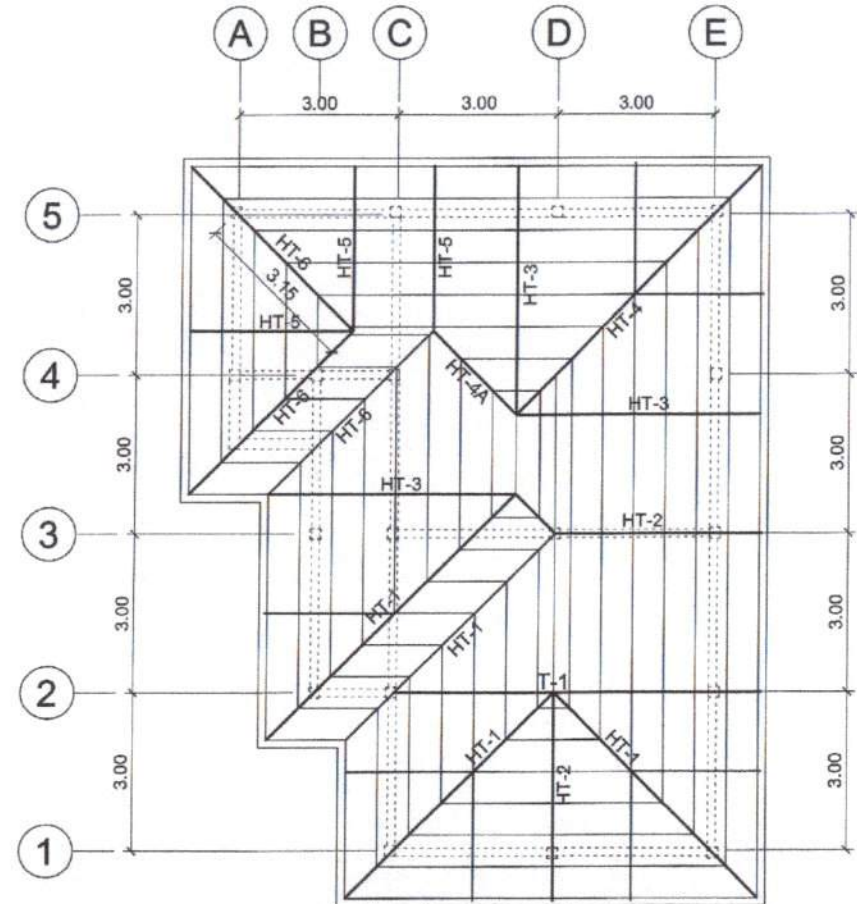
CADD BY:  
  
E. N. RODEROS JR.

STRUCTL. ENGINEER:  M. A. BAGASDAS JR.	END USER:  M. A. MODICA DEAN IMUS CAMPUS	ENDORSED BY:  O. E. DE LOS REYES DIRECTOR PLANNING OFFICE	REC. APPROVAL:  O. A. RODINGA VP/ASS. CVSU	APPROVED BY:  M. D. ROBLES PRES CVSU	PROJECT TITLE/LOCATION: PROPOSED 3 STOREY HRM LAB. BUILDING CVSU IMUS CAMPUS	IMPLEMENTING AGENCY CAVITE STATE UNIVERSITY	SHT NO: S - 3
--	---	--	---	---	---	--	------------------



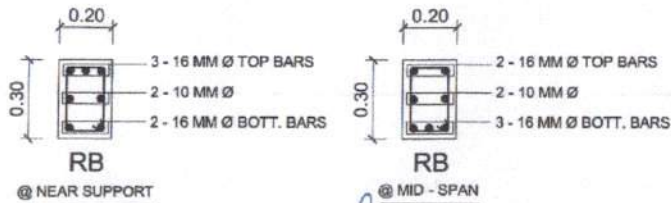
**ROOF BEAM PLAN**

SCALE 1 : 100 MTS.



**ROOF FRAMING PLAN**

SCALE 1 : 100 MTS.



CADD BY:  
*[Signature]*  
E. N. RODEROS JR.

STRUCTL. ENGINEER:  
*[Signature]*  
M. A. BARGAS JR.

END USER:  
*[Signature]*  
M. A. MOJICA  
DEAN  
IMUS CAMPUS

ENDORSED BY:  
*[Signature]*  
O. B. DE LOS REYES  
DIRECTOR  
PLANNING OFFICE

REC. APPROVAL:  
*[Signature]*  
C. X. BOLINGA  
VRASE  
CVSU

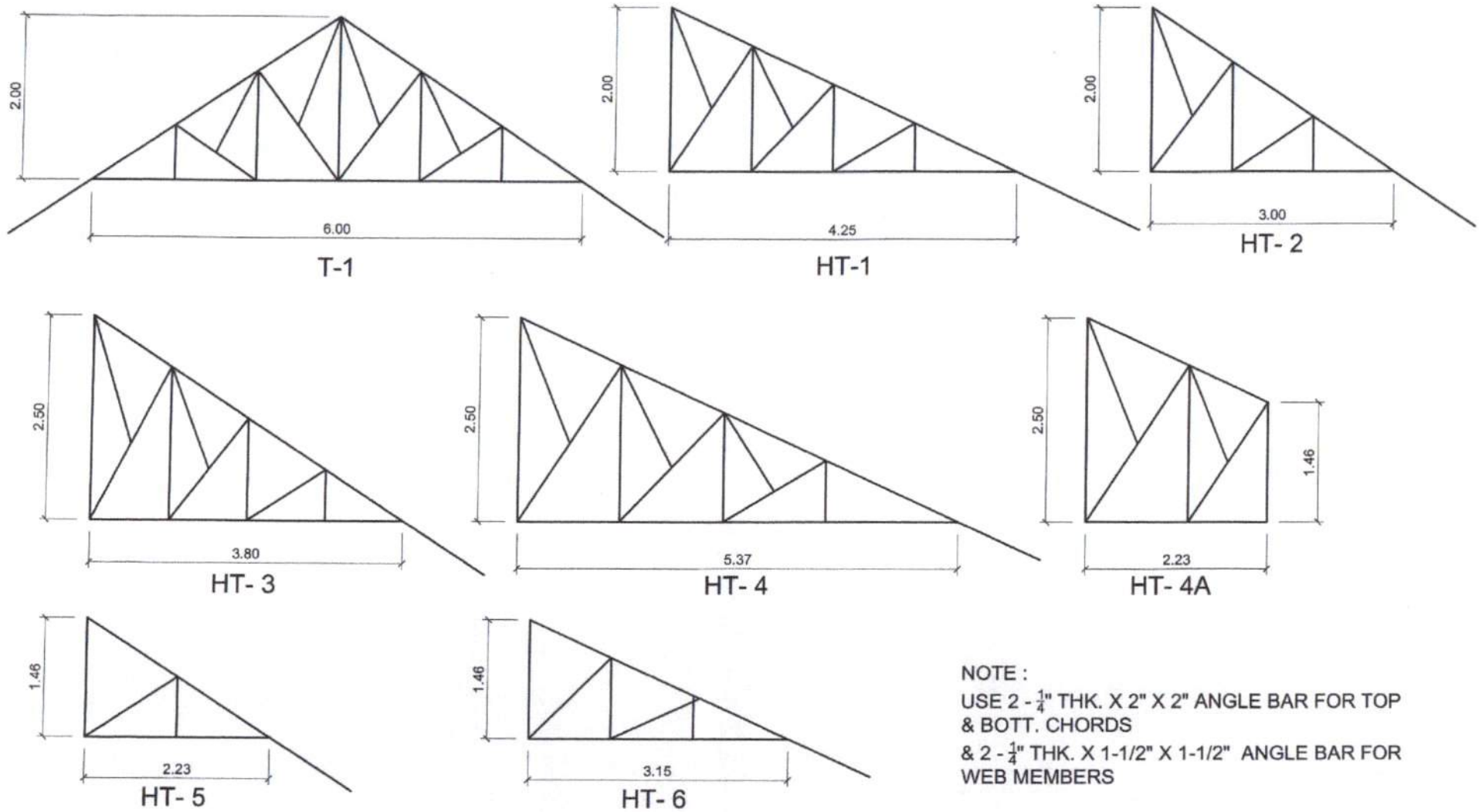
APPROVED BY:  
*[Signature]*  
H. D. ROBLES  
PRES  
CVSU

PROJECT TITLE/LOCATION:  
PROPOSED 3 STOREY  
HRM LAB. BUILDING  
CVSU IMUS CAMPUS

IMPLEMENTING AGENCY  
CAVITE STATE UNIVERSITY

SHT NO:  
S - 4



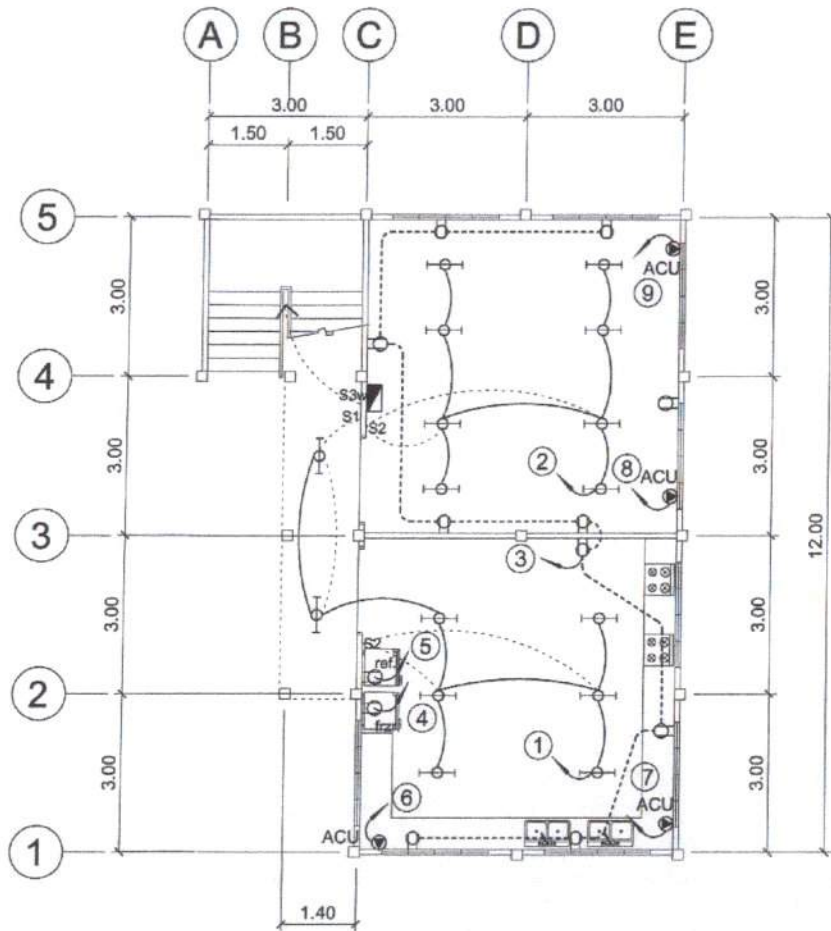


NOTE :  
 USE 2 - 1/4" THK. X 2" X 2" ANGLE BAR FOR TOP & BOTT. CHORDS  
 & 2 - 1/4" THK. X 1-1/2" X 1-1/2" ANGLE BAR FOR WEB MEMBERS

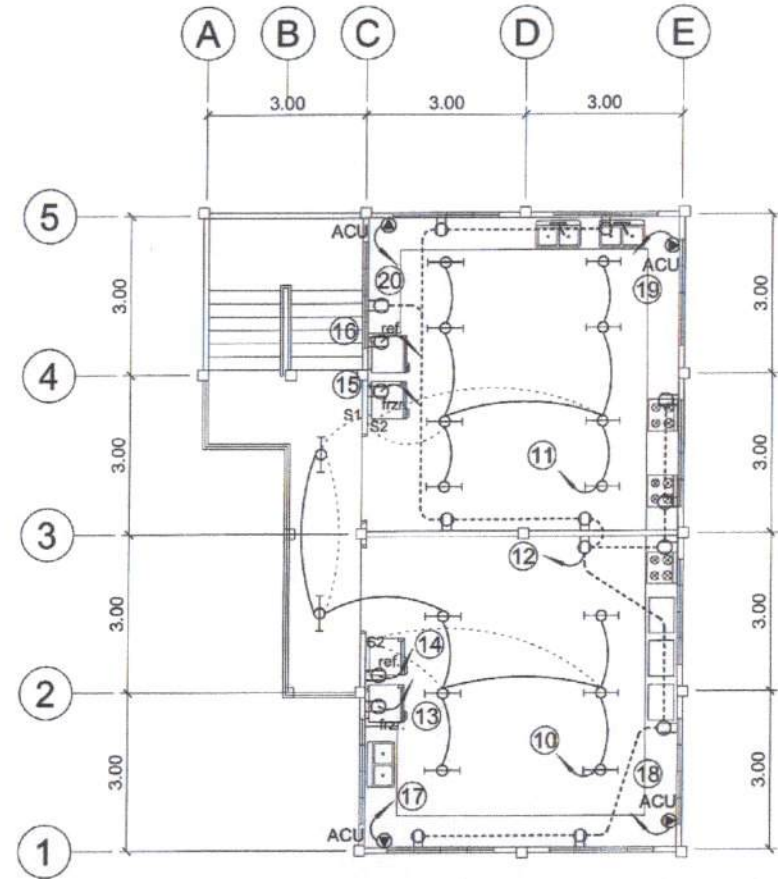
TRUSS DIAGRAM  
 SCALE 1 : 50 MTS.

CADD BY:  
  
 E. N. RODEROS JR.

STRUCTL. ENGINEER:	END USER:	ENDORSED BY:	REC. APPROVAL:	APPROVED BY:	PROJECT TITLE/LOCATION:	IMPLEMENTING AGENCY	SHT NO:
 M. A. BAGASBAS JR.	 M. A. MOJICA DEAN IMUS CAMPUS	 O. B. DE LOS REYES DIRECTOR PLANNING OFFICE	 O. A. PONGA VIRASS CVSU	 H. D. ROBLES PRES CVSU	PROPOSED 3 STOREY HRM LAB. BUILDING CVSU IMUS CAMPUS	CAVITE STATE UNIVERSITY	S - 5



**GROUND FLOOR ELECTL. LAYOUT**  
SCALE 1 : 100 MTS.



**2ND FLOOR ELECTL. LAYOUT**  
SCALE 1 : 100 MTS.

CADD BY:

E. N. RODEROS JR.

PROF. ELECTL. ENGR:

R. P. PEÑA

END USER:

DEAN M. A. MOJICA  
IMUS CAMPUS

ENDORSED BY:

DIRECTOR O. B. DE LOS REYES  
PLANNING OFFICE

REC. APPROVAL:

VP/ASS. C. A. POLINGA  
CVSU

APPROVED BY:

PRES. H. D. ROBLES  
CVSU

PROJECT TITLE/LOCATION:

PROPOSED 3 STOREY  
HRM LAB. BUILDING  
CVSU IMUS CAMPUS

IMPLEMENTING AGENCY

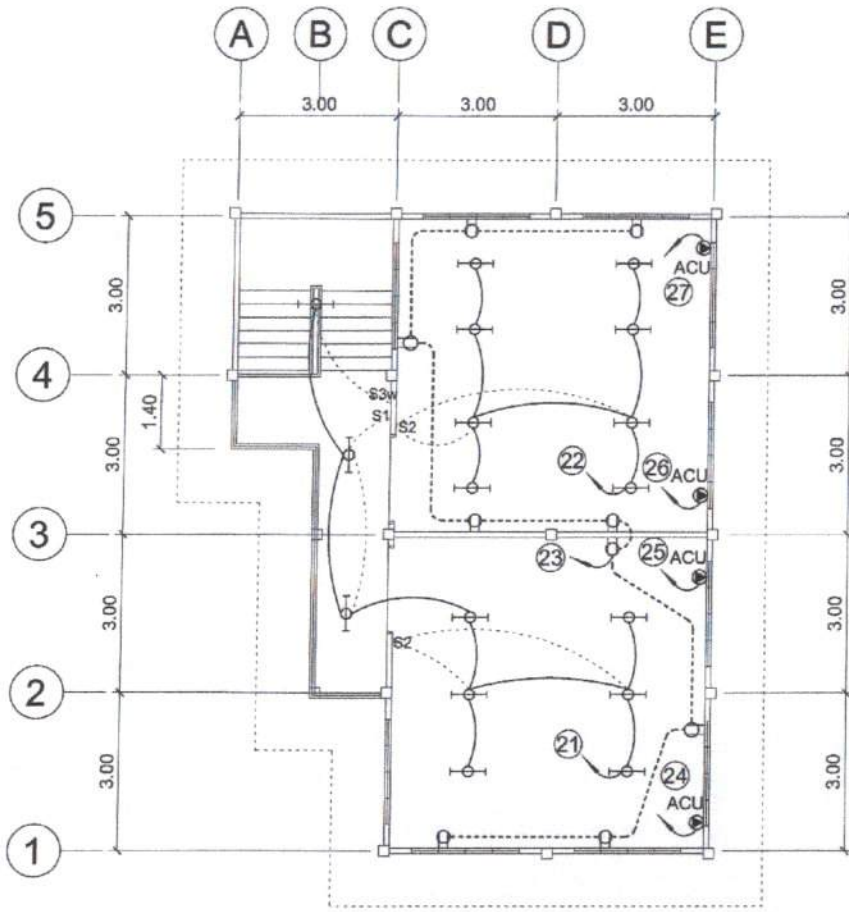
CAVITE STATE UNIVERSITY

SHT NO.:

E - 1

**SECTION**

# SCHEDULE OF LOADS



**3RD FLOOR ELECTL. LAYOUT**  
SCALE 1 : 100 MTS.

PANEL: LPP CABLE: 3 - 60.0 SQ. MM THHN + G 22 SQ MM THHN MAIN: 200 AT, 225AF, 3P, 230V, 30 kAIC, MCCB  
 PHASE: 3 CONDUIT: RSC, 40 MM DIA. ENCLOSURE: NEMA 1  
 VOLTS: 230 CVSU IMUS HRM BUILDING MOUNTING: SURFACE

CKT NO.	NO. OF OUTLETS	CIRCUIT DESCRIPTION	LOAD IN			CIRCUIT BREAKER RATING	Size of Conductor		Size of Conduit in MM $\phi$	Color Code
			WATTS	VOLT	AMPERES		SQ. MM THHN	SQ. MM THHN(G)		
1	8	LIGHTING OUTLET	800	230	3.48	15AT, 2P, 10 KAIC	2 - 2.0	15	1R, 1BK	
2	8	LIGHTING OUTLET	800	230	3.48	15AT, 2P, 10 KAIC	2 - 2.0	15	1R, 1BK	
3	9	CONVENIENCE OUTLET	1820	230	7.04	20AT, 2P, 10 KAIC	2 - 3.5 + G 2.0	15	1R, 1BK, G	
4	1	FREEZER	1000	230	4.35	20AT, 2P, 10 KAIC	2 - 3.5 + G 2.0	15	1R, 1BK, G	
5	1	REFRIGERATOR	1000	230	4.35	20AT, 2P, 10 KAIC	2 - 3.5 + G 2.0	15	1R, 1BK, G	
6	1	ACU OUTLET, 2.5HP	2500	230	12.00	30AT, 2P, 10 KAIC	2 - 5.5 + G 2.0	15	1R, 1BK, G	
7	1	ACU OUTLET, 2.5HP	2500	230	12.00	30AT, 2P, 10 KAIC	2 - 5.5 + G 2.0	15	1R, 1BK, G	
8	1	ACU OUTLET, 2.5HP	2500	230	12.00	30AT, 2P, 10 KAIC	2 - 5.5 + G 2.0	15	1R, 1BK, G	
9	1	ACU OUTLET, 2.5HP	2500	230	12.00	30AT, 2P, 10 KAIC	2 - 5.5 + G 2.0	15	1R, 1BK, G	
10	8	LIGHTING OUTLET	800	230	3.48	15AT, 2P, 10 KAIC	2 - 2.0	15	1R, 1BK	
11	8	LIGHTING OUTLET	800	230	3.48	15AT, 2P, 10 KAIC	2 - 2.0	15	1R, 1BK	
12	9	CONVENIENCE OUTLET	1820	230	7.04	20AT, 2P, 10 KAIC	2 - 3.5 + G 2.0	15	1R, 1BK, G	
13	1	FREEZER	1000	230	4.35	20AT, 2P, 10 KAIC	2 - 3.5 + G 2.0	15	1R, 1BK, G	
14	1	REFRIGERATOR	1000	230	4.35	20AT, 2P, 10 KAIC	2 - 3.5 + G 2.0	15	1R, 1BK, G	
15	1	FREEZER	1000	230	4.35	20AT, 2P, 10 KAIC	2 - 3.5 + G 2.0	15	1R, 1BK, G	
16	1	REFRIGERATOR	1000	230	4.35	20AT, 2P, 10 KAIC	2 - 3.5 + G 2.0	15	1R, 1BK, G	
17	1	ACU OUTLET, 2.5HP	2500	230	12.00	30AT, 2P, 10 KAIC	2 - 5.5 + G 2.0	15	1R, 1BK, G	
18	1	ACU OUTLET, 2.5HP	2500	230	12.00	30AT, 2P, 10 KAIC	2 - 5.5 + G 2.0	15	1R, 1BK, G	
19	1	ACU OUTLET, 2.5HP	2500	230	12.00	30AT, 2P, 10 KAIC	2 - 5.5 + G 2.0	15	1R, 1BK, G	
20	1	ACU OUTLET, 2.5HP	2500	230	12.00	30AT, 2P, 10 KAIC	2 - 5.5 + G 2.0	15	1R, 1BK, G	
21	9	LIGHTING OUTLET	800	230	3.91	15AT, 2P, 10 KAIC	2 - 2.0	15	1R, 1BK	
22	8	LIGHTING OUTLET	800	230	3.48	15AT, 2P, 10 KAIC	2 - 2.0	15	1R, 1BK	
23	9	CONVENIENCE OUTLET	1820	230	7.04	20AT, 2P, 10 KAIC	2 - 3.5 + G 2.0	15	1R, 1BK, G	
24	1	ACU OUTLET, 2.5HP	2500	230	12.00	30AT, 2P, 10 KAIC	2 - 5.5 + G 2.0	15	1R, 1BK, G	
25	1	ACU OUTLET, 2.5HP	2500	230	12.00	30AT, 2P, 10 KAIC	2 - 5.5 + G 2.0	15	1R, 1BK, G	
26	1	ACU OUTLET, 2.5HP	2500	230	12.00	30AT, 2P, 10 KAIC	2 - 5.5 + G 2.0	15	1R, 1BK, G	
27	1	ACU OUTLET, 2.5HP	2500	230	12.00	30AT, 2P, 10 KAIC	2 - 5.5 + G 2.0	15	1R, 1BK, G	
28		SPARE								
29		SPARE								
30		SPARE								
TOTAL			21440	230	74.00 83.57 54.96	200AT, 3P, 30 KAIC	3 - 5.0 + G 2.2	50	1R, 1BK, 1Y, G	

**FEEDER and CURRENT PROTECTION COMPUTATION:**

NOTE:  $I_{FL} = \frac{[83.57 \times 1.732 + 25\% \times \text{Im}] \text{ DF}}{\text{use: } 3 - 50 \text{ SQMM THHN} + 1 - 22 \text{ SQMM THHN IN } 50 \text{ MM DIA. RSC}}$  = 122.73 Amperes  
 $I_{CB} = \frac{[83.57 \times 1.732 + 250\% \times \text{Im}] \text{ DF}}{\text{use: } 200AT, 225AF, 3P, 230V, 30KAIC, CB}$  = 156.48 Amperes

This Electrical Design is good only for the above connected loads.  
 Any additional electrical load connection in the future is prohibited,  
 Except redesign of electrical load system will be done.

PREPARED BY: RONALD P. PENA  
 Professional Electrical Engineer  
 PRC # 3857  
 Expiry: April 1, 2022  
 PTR # CAV 2124168  
 Date: Jan. 04, 2021  
 Place: Indang, Cavite  
 TIN # 302-441-958

CADD BY:

E. N. RODEROS JR.

PROF. ELECTL. ENGR.

R. P. PEÑA

END USER:

DEAN M. A. MOJICA  
 IMUS CAMPUS

ENDORSED BY:

O. B. DE LOS REYES  
 DIRECTOR PLANNING OFFICE

REC. APPROVAL:

C. A. ROLINGA  
 VRSR CVSU

APPROVED BY:

M. D. ROBLES  
 PRES CVSU

PROJECT TITLE/LOCATION:

PROPOSED 3 STOREY  
 HRM LAB. BUILDING  
 CVSU IMUS CAMPUS

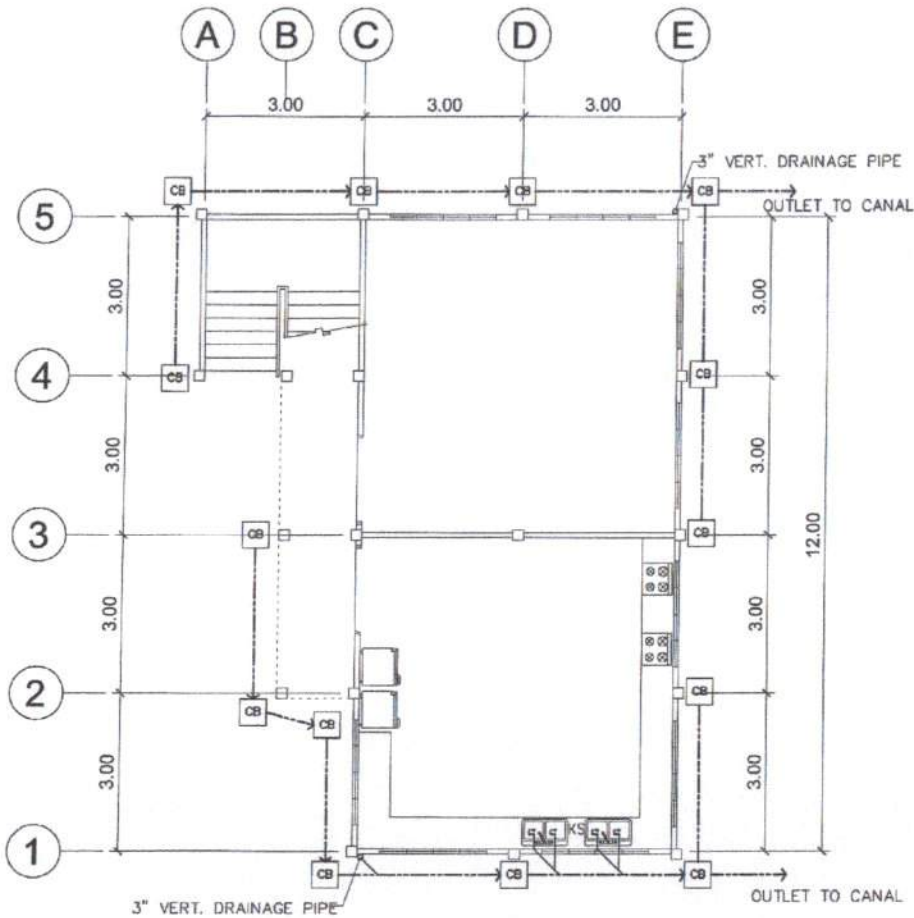
IMPLEMENTING AGENCY

CAVITE STATE UNIVERSITY

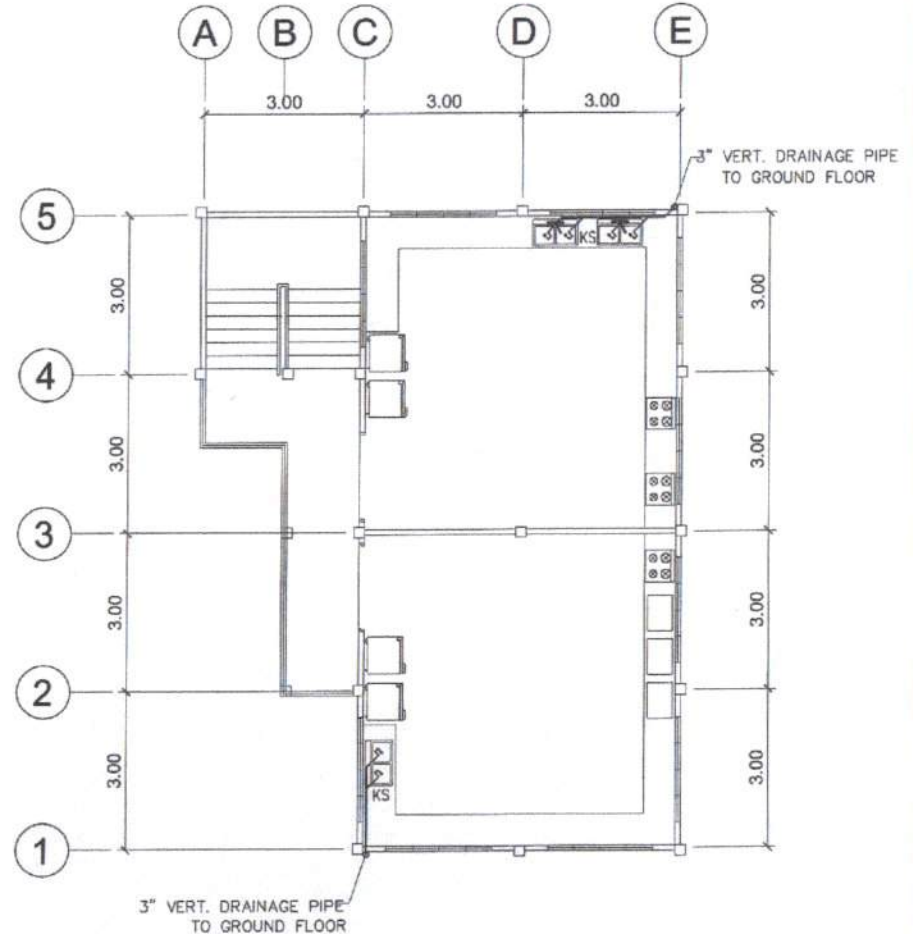
SHT NO:

E - 2

**SECTION**



**GROUND FLOOR SEWER LINE LAYOUT**  
SCALE 1 : 100 MTS.



**2ND FLOOR SEWER LINE LAYOUT**  
SCALE 1 : 100 MTS.

CADD BY:  
*E. N. Roderos Jr.*  
E. N. RODEROS JR.

REG. MASTER PLUMBER:  
*S. B. Bayot Jr.*  
S. B. BAYOT JR.

END USER:  
*M. A. Modica*  
M. A. MODICA  
DEAN IMUS CAMPUS

ENDORSED BY:  
*O. B. De Los Reyes*  
O. B. DE LOS REYES  
DIRECTOR PLANNING OFFICE

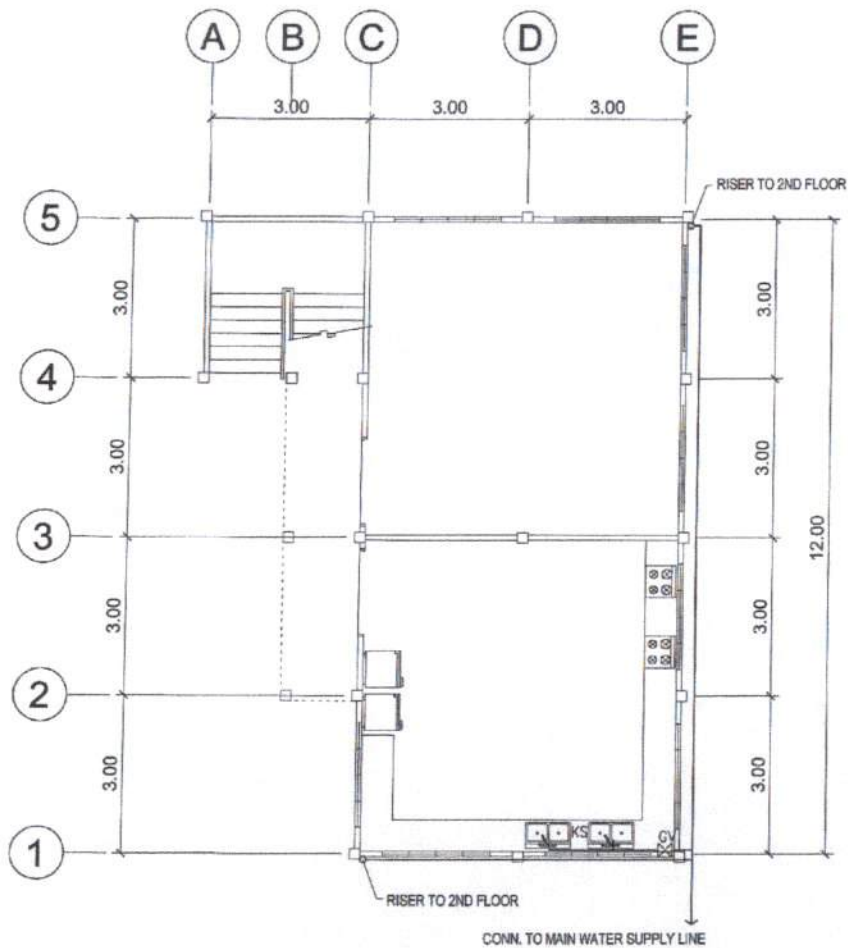
REC. APPROVAL:  
*C. A. Posinga*  
C. A. POSINGA  
VP/ASS CVSU

APPROVED BY:  
*H. D. Robles*  
H. D. ROBLES  
PRES CVSU

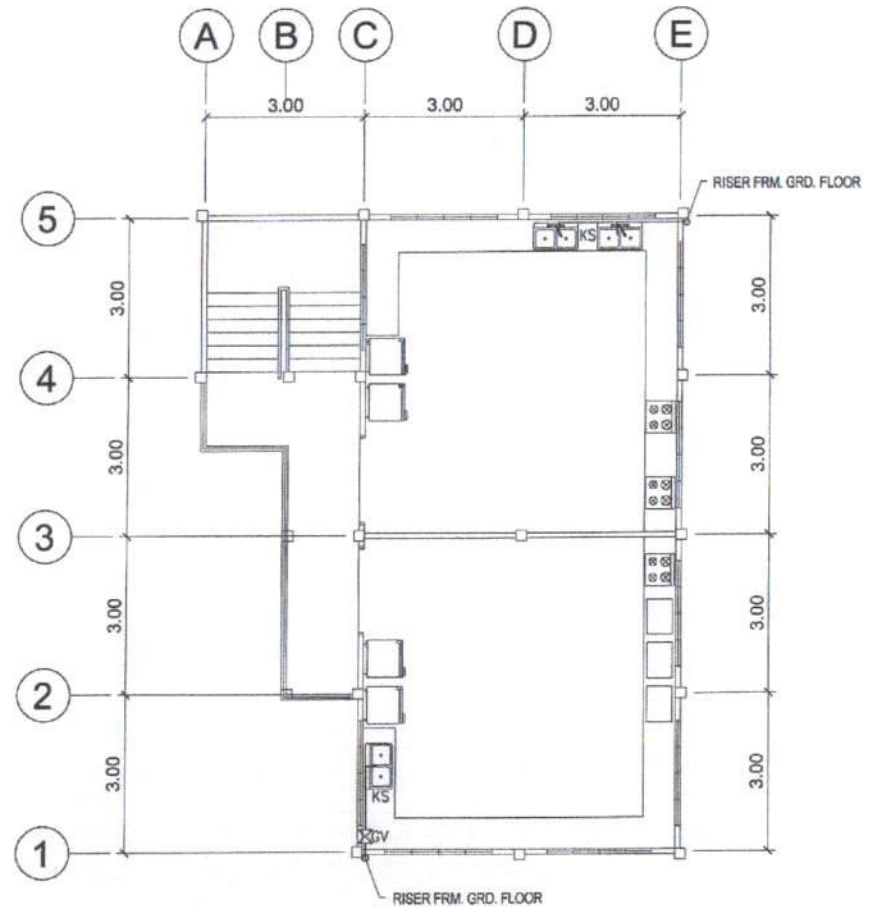
PROJECT TITLE/LOCATION:  
PROPOSED 3 STOREY  
HRM LAB. BUILDING  
CVSU IMUS CAMPUS

IMPLEMENTING AGENCY  
CAVITE STATE UNIVERSITY

SHT NO:  
P - 1



**GROUND FLR. WATER LINE LAYOUT**  
SCALE 1 : 100 MTS.

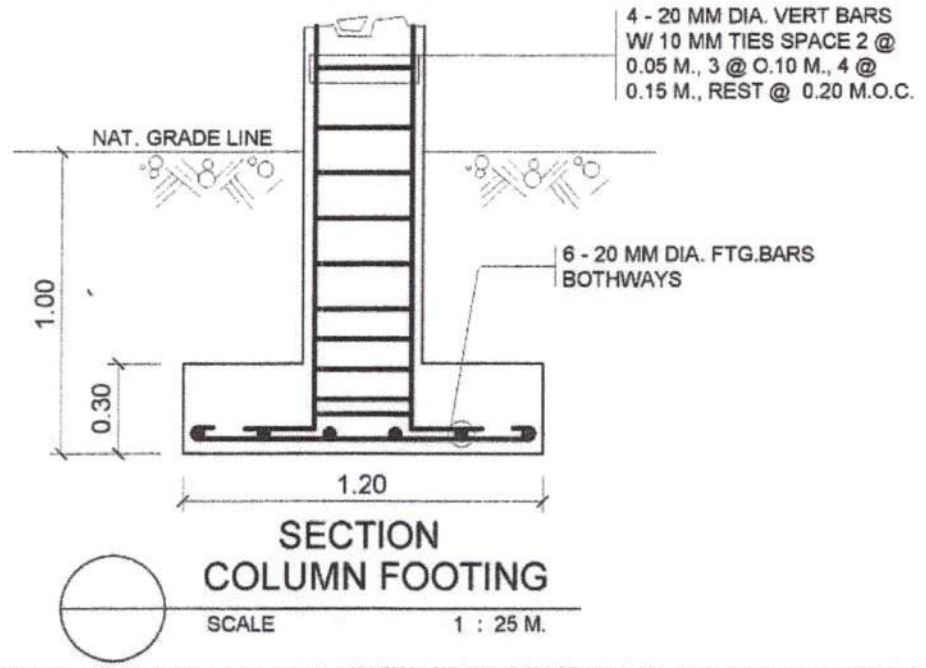
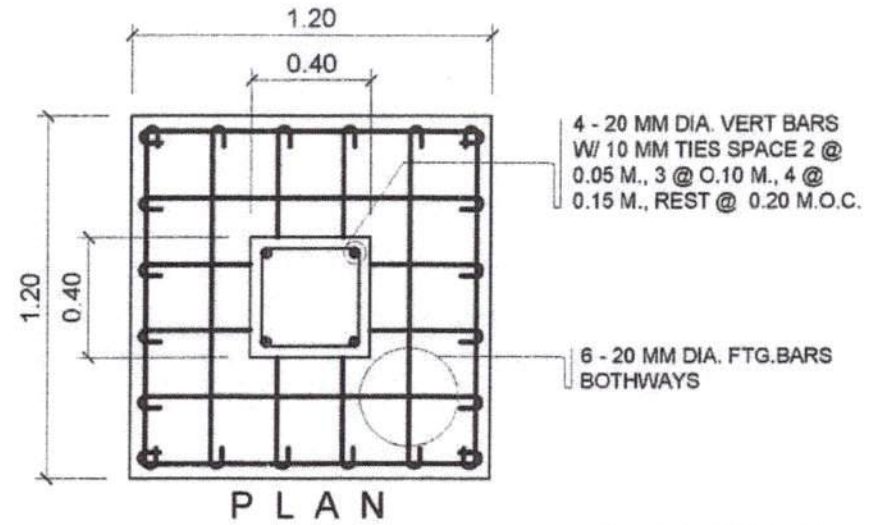
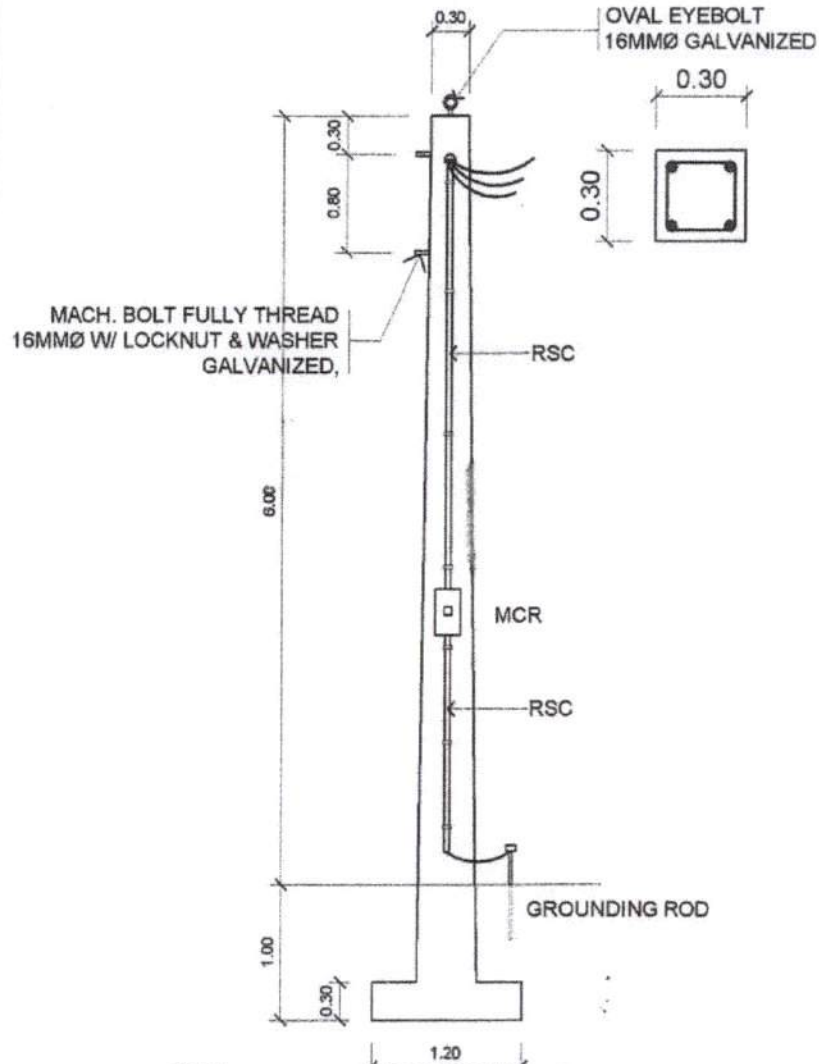


**2ND FLOOR WATER LINE LAYOUT**  
SCALE 1 : 100 MTS.

CADD BY:  
*E. N. Roderos Jr.*  
E. N. RODEROS JR.

**SECTION**

REG. MASTER PLUMBER:	END USER:	ENDORSED BY:	REC. APPROVAL:	APPROVED BY:	PROJECT TITLE/LOCATION:	IMPLEMENTING AGENCY	SHT NO.:
<i>S. B. Bayot Jr.</i> S. B. BAYOT JR.	<i>M. A. Mojica</i> DEAN IMUS CAMPUS	<i>O. B. De Los Reyes</i> O. B. DE LOS REYES DIRECTOR PLANNING OFFICE	<i>C. A. Polinga</i> REC. APPROVAL VP/ASS. CVSU	<i>H. D. Robles</i> APPROVED BY PRES CVSU	PROPOSED 3 STOREY HRM LAB. BUILDING CVSU IMUS CAMPUS	CAVITE STATE UNIVERSITY	P - 2



PREPARED BY:	PROF. ELECT. ENGR.	END USER:	ENDORSED BY:	REC. APPROVAL:	APPROVED BY:	PROJECT TITLE/LOCATION:	IMPLEMENTING AGENCY:	SHT NO.:
E. RODEROS JR.	R. P. PEÑA	M. A. MOJICA DEAN CVSU IMUS CAMPUS	O. B. DE LOS REYES DIRECTOR FPU	C. A. POLINGA VPASS CVSU	H. D. ROBLES PRES CVSU	PROPOSED SERVICE ENTRANCE POLE CVSU IMUS CAMPUS	CAVITE STATE UNIVERSITY	1