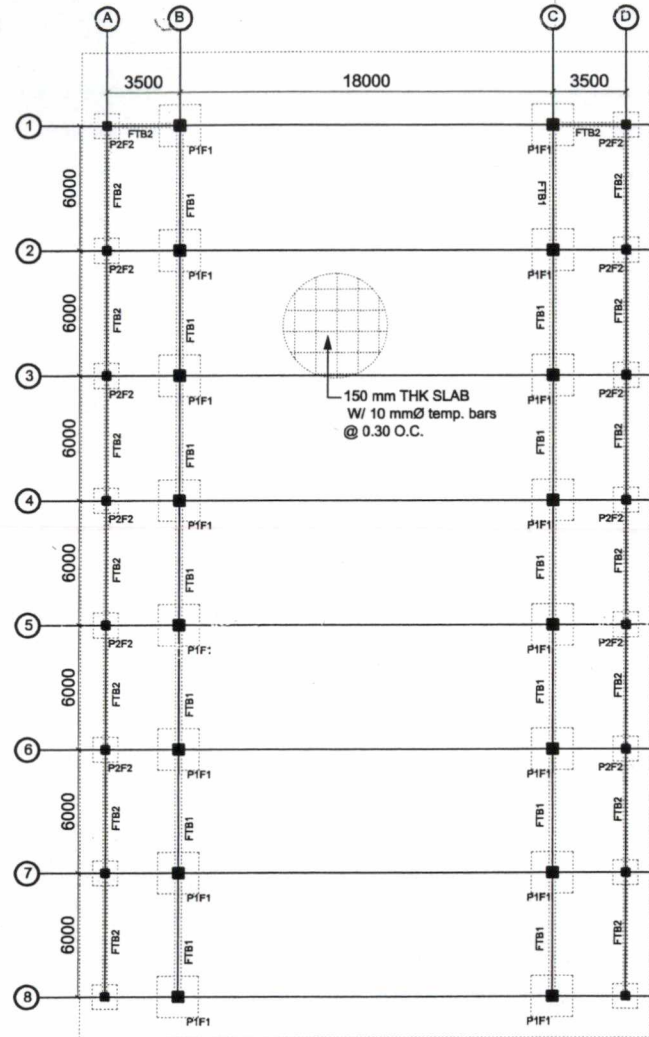


FLOOR PLAN (REVISED)
SCALE 1 : 250 MTS.

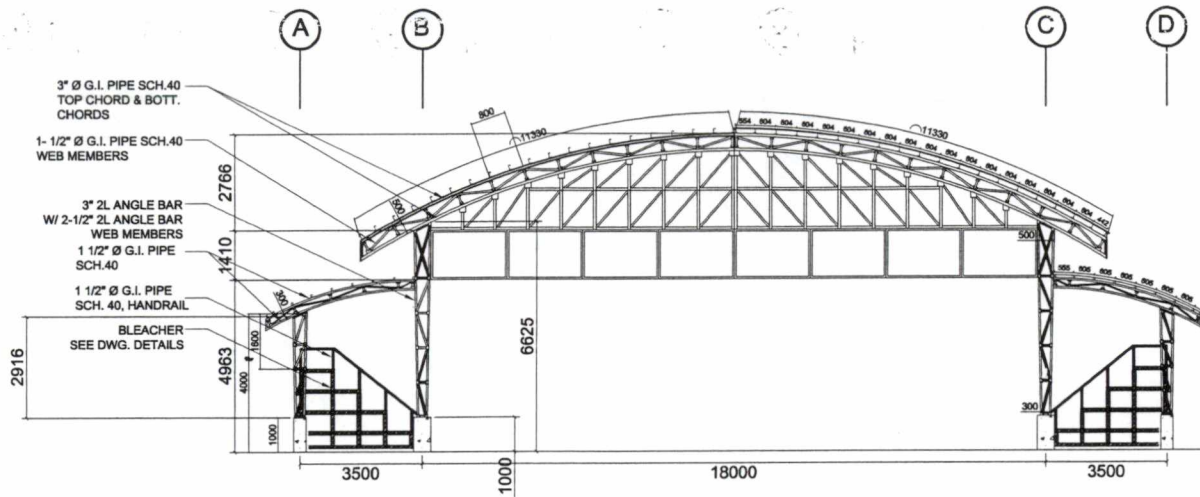


FOUNDATION PLAN (REVISED)
SCALE 1 : 250 MTS.

FOR BID BULLETIN

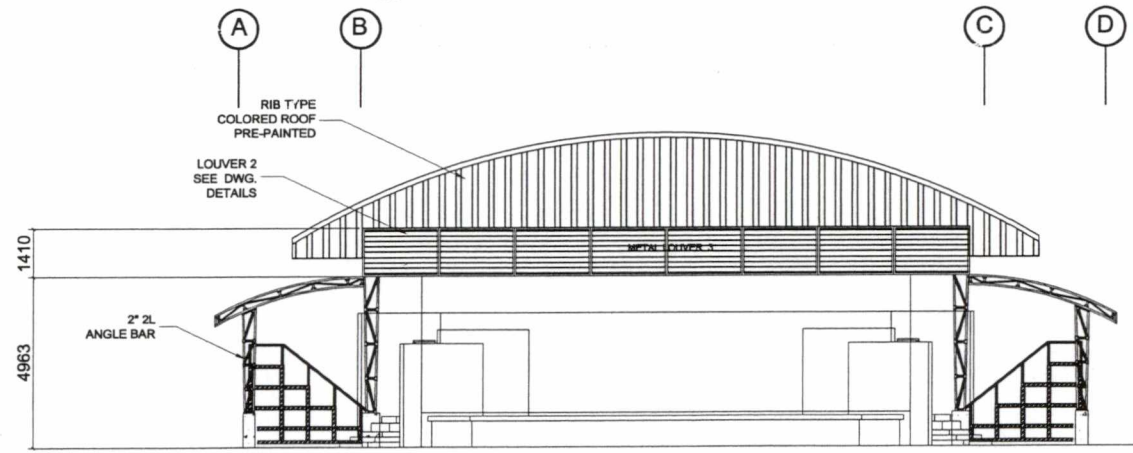
PROPOSED COVERED COURT AT CVSU CARMONA CAMPUS
CAVITE STATE UNIVERSITY

CARMONA CAMPUS



CROSS SECTION

SCALE 1 : 150 MTS.

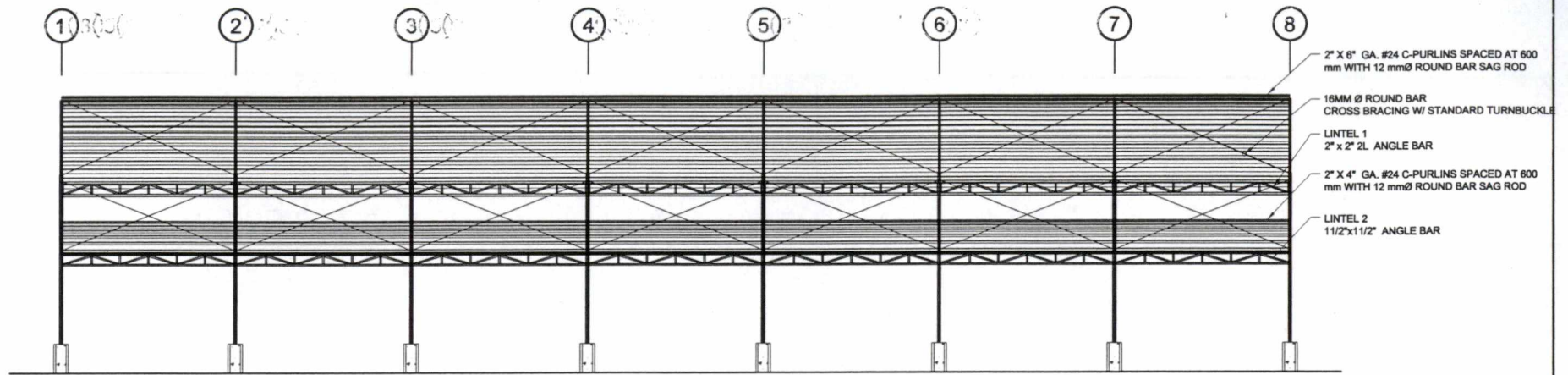


FRONT ELEVATION

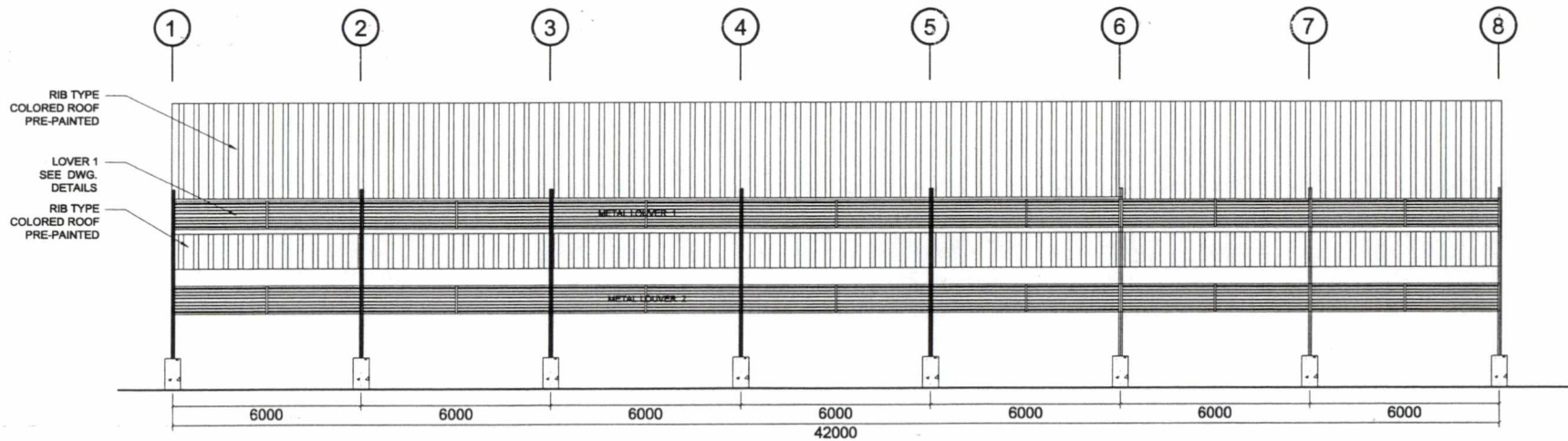
SCALE 1 : 150 MTS.

FOR BID BULLETIN

PROPOSED COVERED COURT AT CVSU CARMONA CAMPUS
 CAVITE STATE UNIVERSITY CARMONA CAMPUS



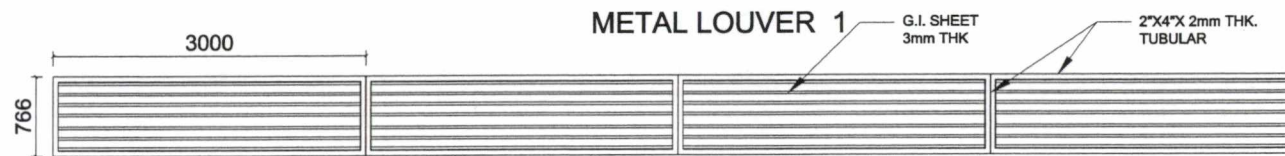
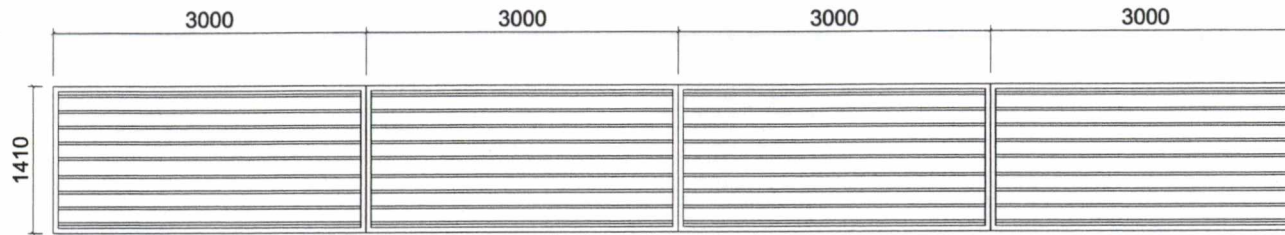
LONGITUDINAL SECTION
SCALE 1 : 150 MTS.



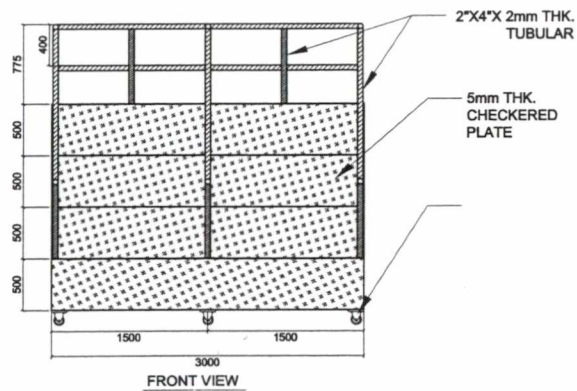
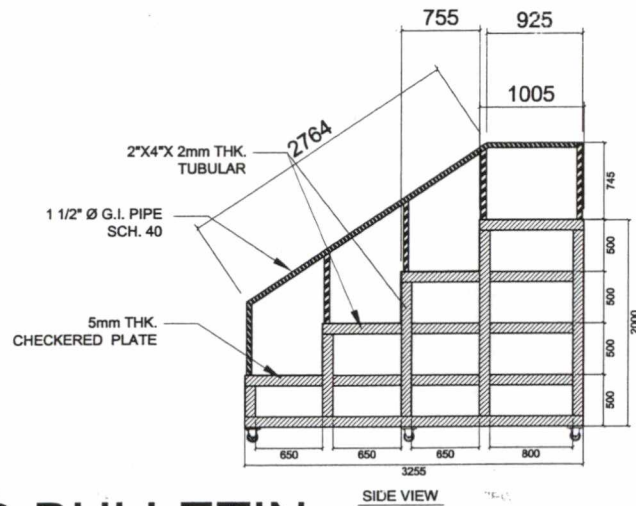
SIDE ELEVATION
SCALE 1 : 150 MTS.

FOR BID BULLETIN

PROPOSED COVERED COURT AT CVSU CARMONA CAMPUS
CAVITE STATE UNIVERSITY CARMONA CAMPUS



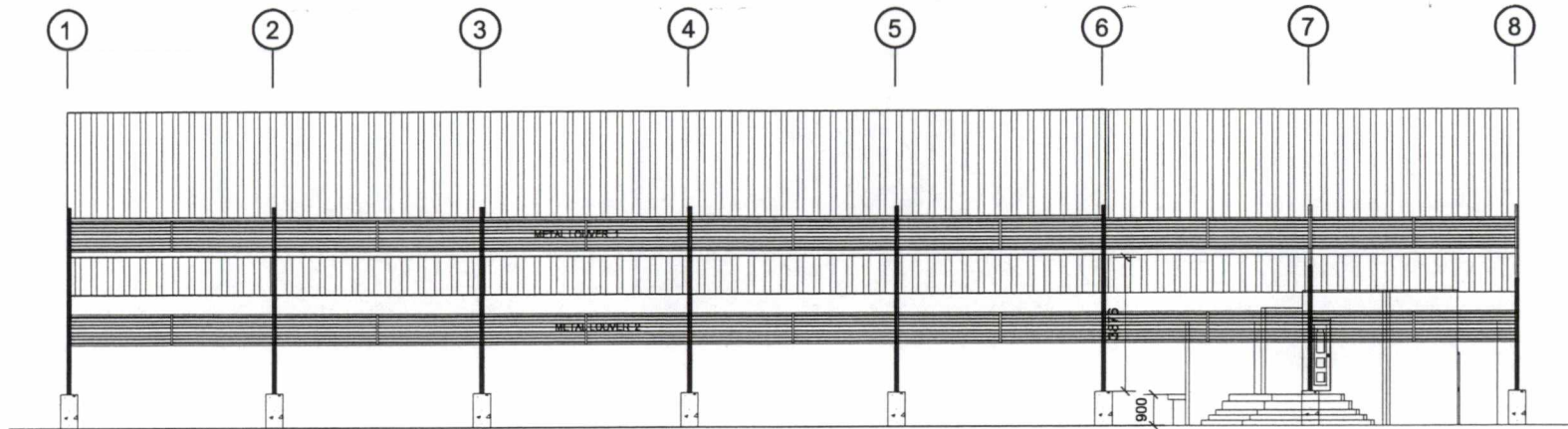
METAL LOUVER 2



FOR BID BULLETIN

BLEACHER

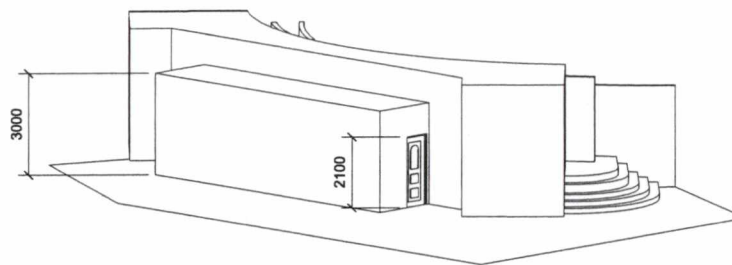
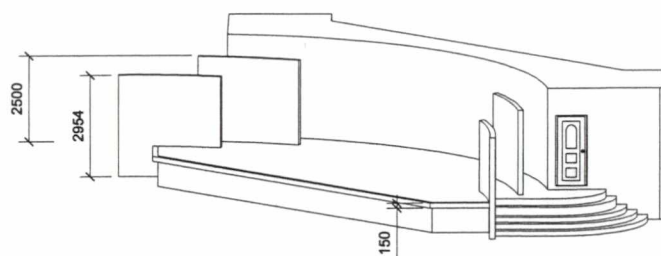
PROPOSED COVERED COURT AT CVSU CARMONA CAMPUS
CAVITE STATE UNIVERSITY CARMONA CAMPUS



SIDE ELEVATION

SCALE

1 : 150 MTS.



PERSPECTIVE VIEW OF STAGE

SCALE

NTS.

FOR BID BULLETIN

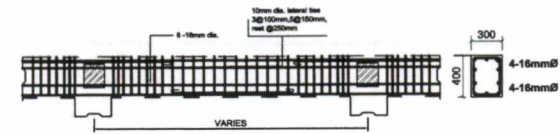
PROPOSED COVERED COURT AT CVSU CARMONA CAMPUS

CAVITE STATE UNIVERSITY

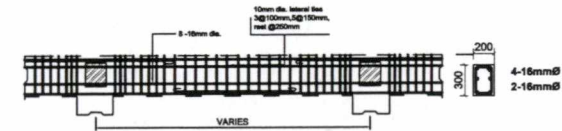
CARMONA CAMPUS

SCHEDULE OF FOOTING

MARK	NUMBER OF BARS IN X DIRECTION	NUMBER OF BARS IN Z DIRECTION	THICKNESS	WIDTH	LENGTH
F1	14-16mmØ	14-16mmØ	0.35m	2.00m	2.00m
F2	10-16mmØ	10-16mmØ	0.30m	1.20m	1.20m



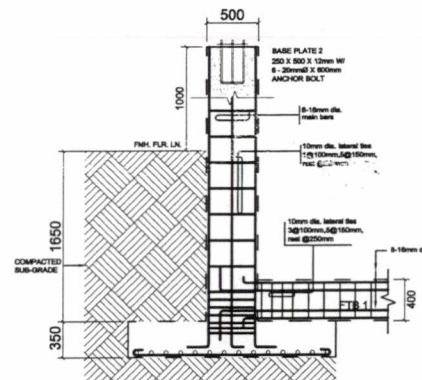
DET. OF FOOTING TIE BEAM 1
SCALE NTS.



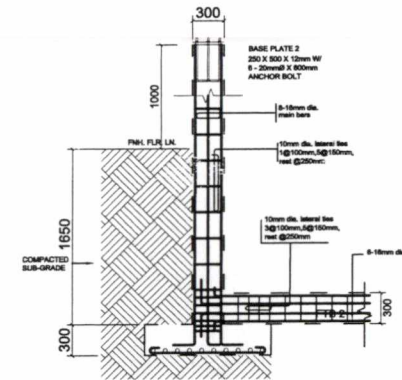
DET. OF FOOTING TIE BEAM 2
SCALE NTS.

SCHEDULE OF COLUMN

MARK	CONCRETE SECTION	STEEL BARS ARRANGEMENT	STIRRUP DETAILS
P1		 8-20mmØ PROVIDE EQUAL NUMBER OF BARS ON EACH FACE	 10mmØ
P2		 8-16mmØ PROVIDE EQUAL NUMBER OF BARS ON EACH FACE	 10mmØ



DETAIL OF COLUMN 1
SCALE NTS.

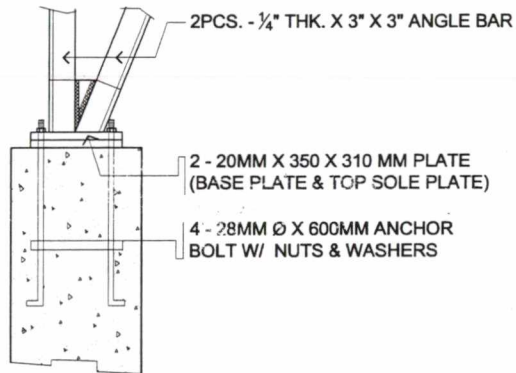
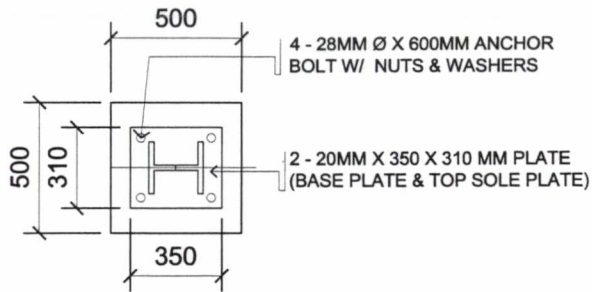


DETAIL OF COLUMN 2
SCALE NTS.

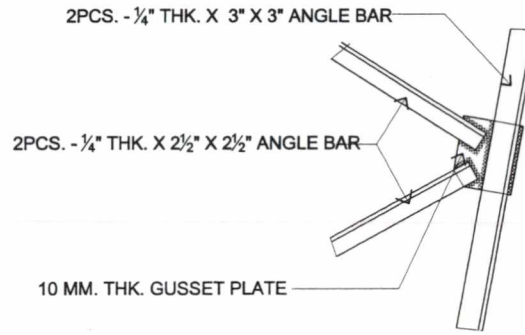
FOR BID BULLETIN

PROPOSED COVERED COURT AT CVSU CARMONA CAMPUS
CARMONA CAMPUS

CAVITE STATE UNIVERSITY



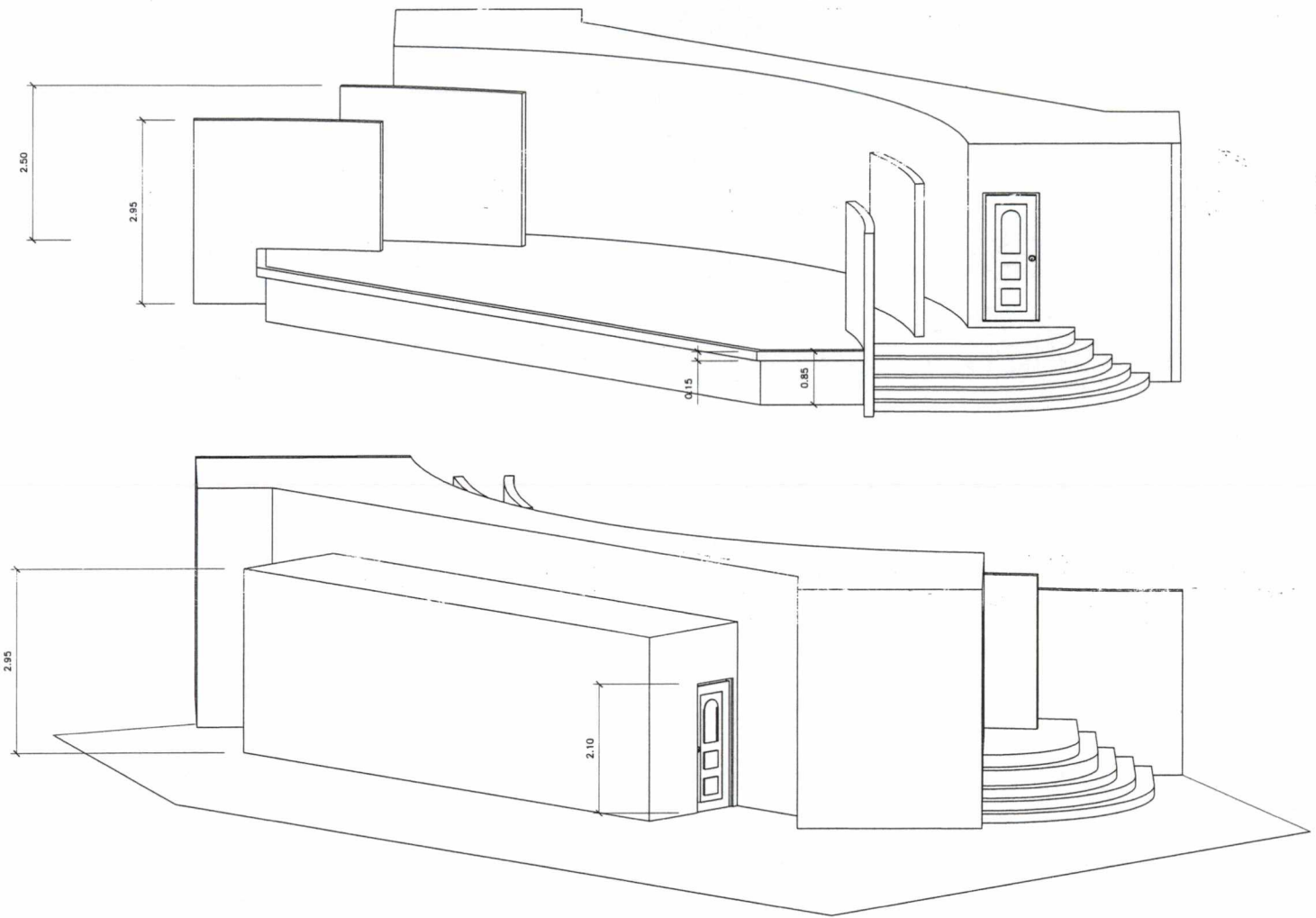
1 SPOT DETAIL
SCALE: 1 : 25 M.



2 SPOT DETAIL
SCALE: 1 : 25 M.

FOR BID BULLETIN

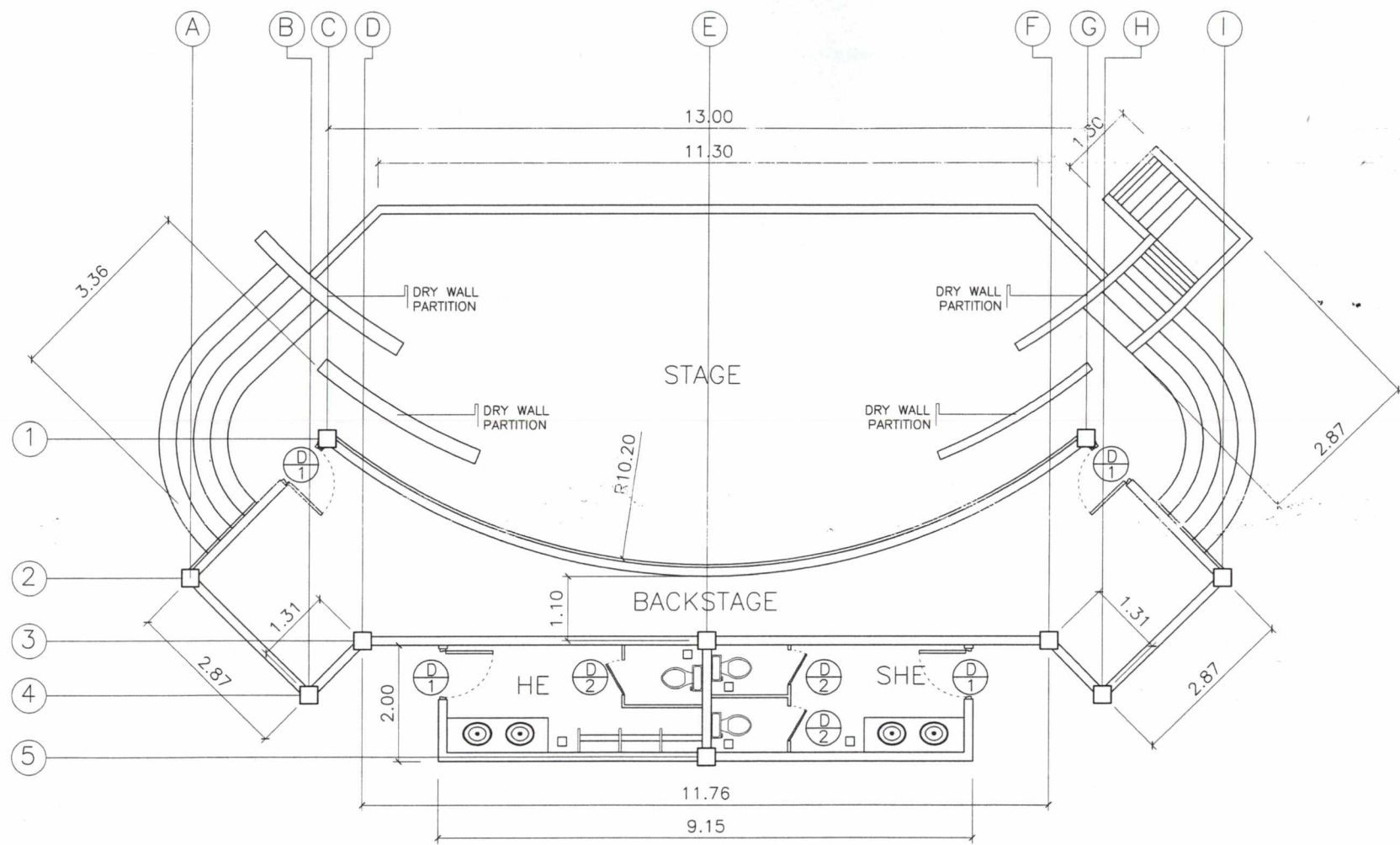
PROPOSED COVERED COURT AT CVSU CARMONA CAMPUS
CAVITE STATE UNIVERSITY CARMONA CAMPUS



○ PERSPECTIVE (REVISED)
SCALE 1 : 75 MTS

FOR BID BULLETIN

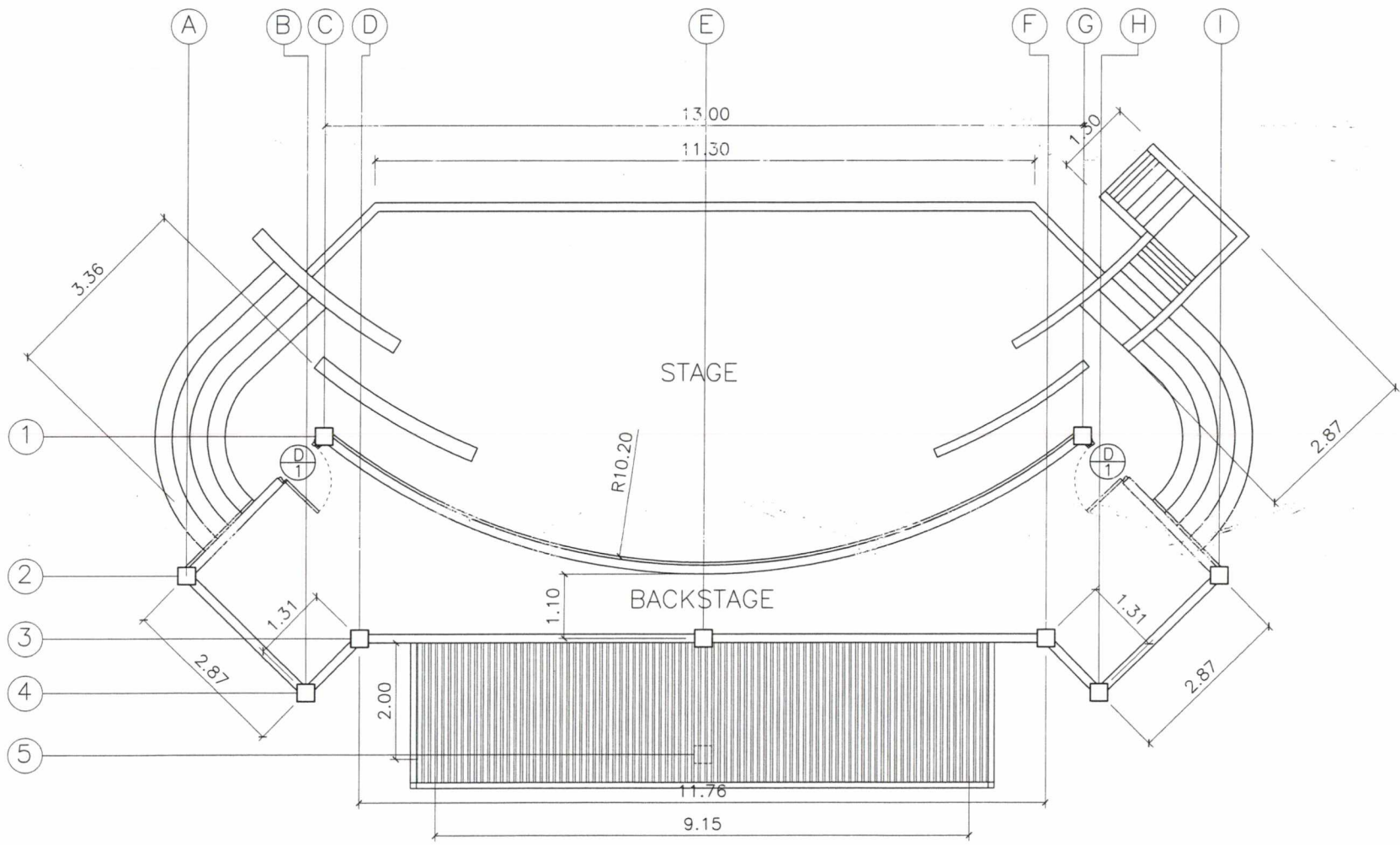
PROPOSED STAGE AT CVSU CARMONA CAMPUS
CAVITE STATE UNIVERSITY CARMONA CAMPUS



FLOOR PLAN (REVISED)
 SCALE 1 : 75 MTS

FOR BID BULLETIN

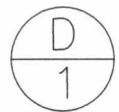
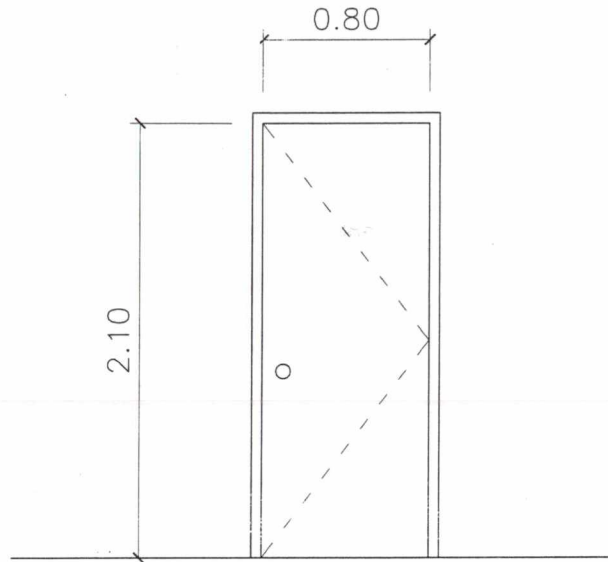
PROPOSED STAGE AT CVSU CARMONA CAMPUS
 CAVITE STATE UNIVERSITY, CARMONA CAMPUS



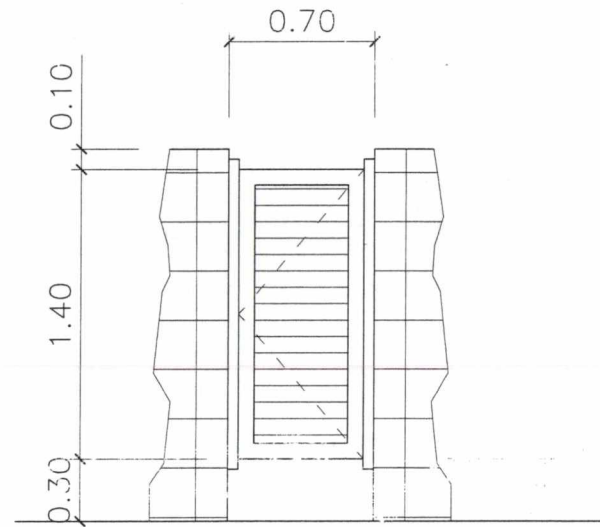

 ROOF PLAN (REVISED)
 SCALE _____ 1 : 75 MTS

FOR BID BULLETIN

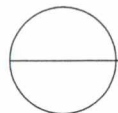
PROPOSED STAGE AT CVSU CARMONA CAMPUS
 CAVITE STATE UNIVERSITY CARMONA CAMPUS



0.80 X 2.10 SOLID STEEL DOOR
W/ COMPLETE ACCESSORIES
4 SETS



0.60 X 1.40 ALUMINUM FRAME
DOOR W/ 1/4" THK. FROSTED
GLASS & COMPLETE
ACCESSORIES
5 SETS



SCHEDULE OF DOORS AND WINDOWS (REVISED)

SCALE

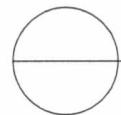
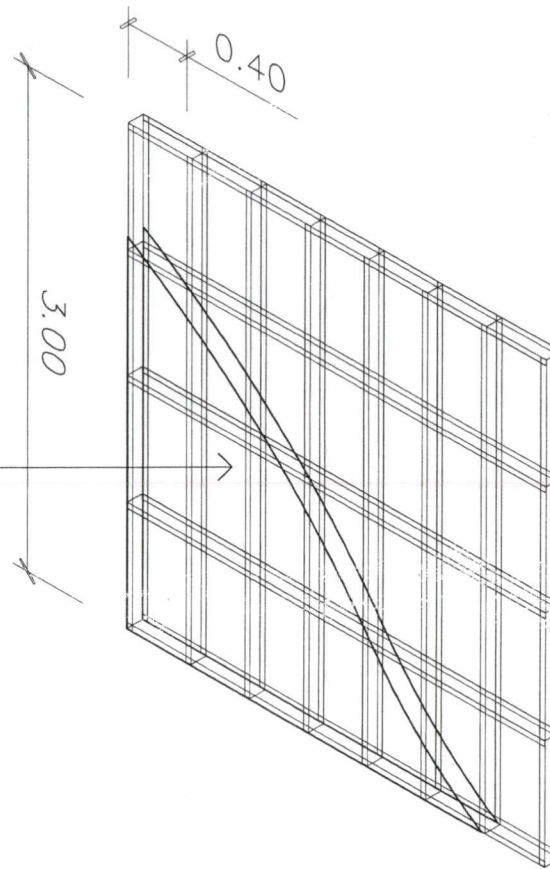
1 :25 MTS

FOR BID BULLETIN

PROPOSED STAGE AT CVSU CARMONA CAMPUS

CAVITE STATE UNIVERSITY CARMONA CAMPUS

1/4" THK. MAR. PLYWOOD PARTITION
(3.00 M. HIGH) ON
2" X 4" LIGHT METAL FRAMES
STUDS @ 0.40 M. O. C.



DETAILS OF WALL PARTITION (REVISED)

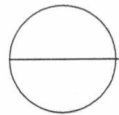
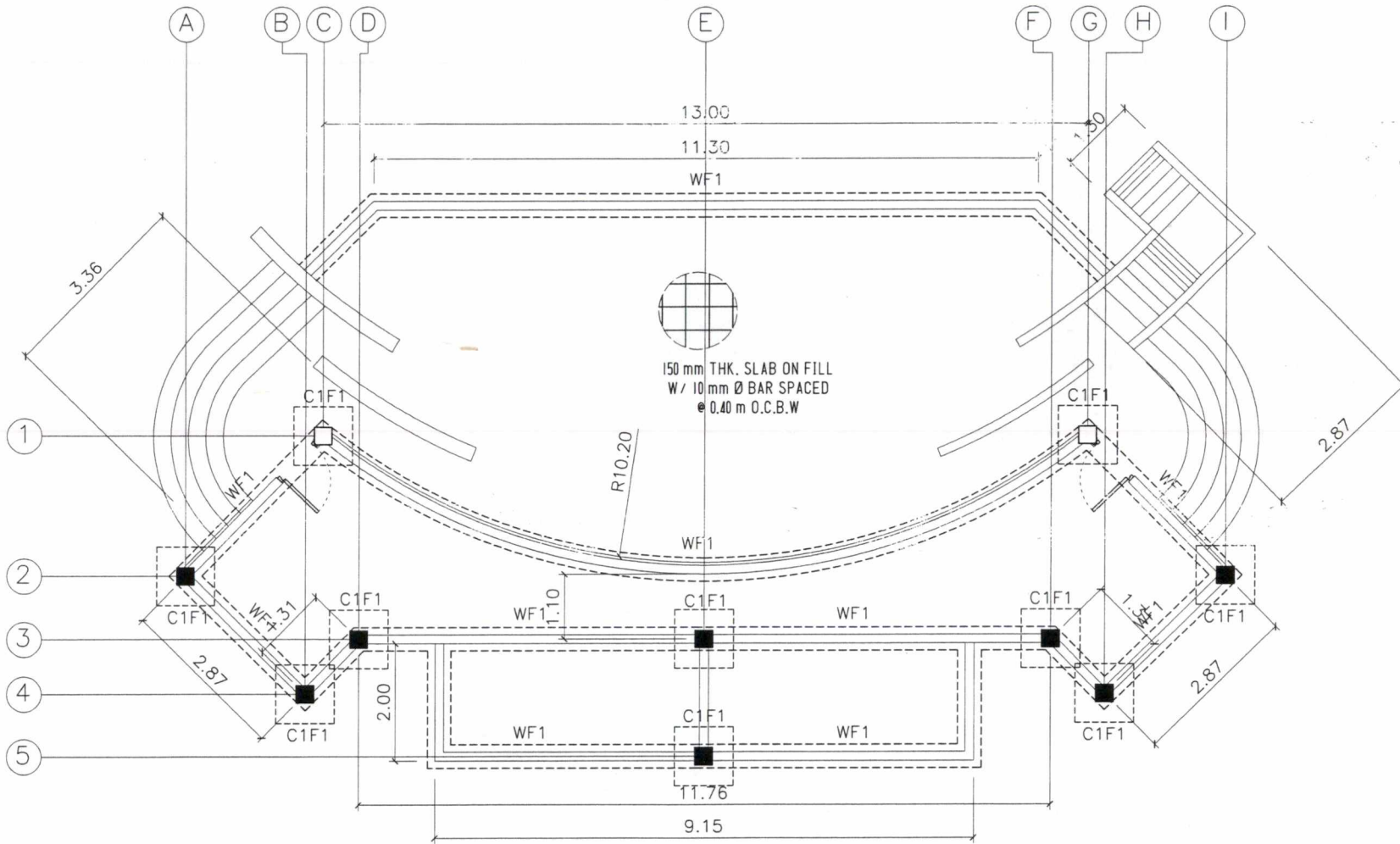
SCALE

1 : 25 MTS

FOR BID BULLETIN

PROPOSED STAGE AT CVSU CARMONA CAMPUS

CAVITE STATE UNIVERSITY CARMONA CAMPUS



FOUNDATION PLAN (REVISED)

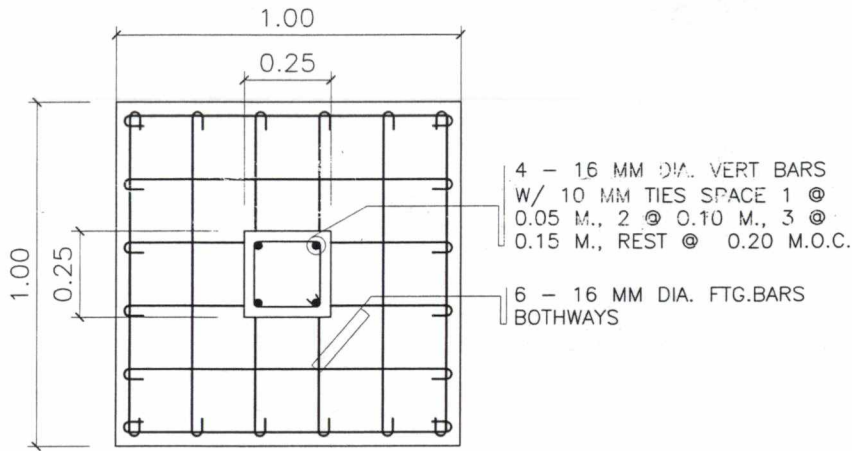
SCALE

1 : 75 MTS

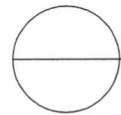
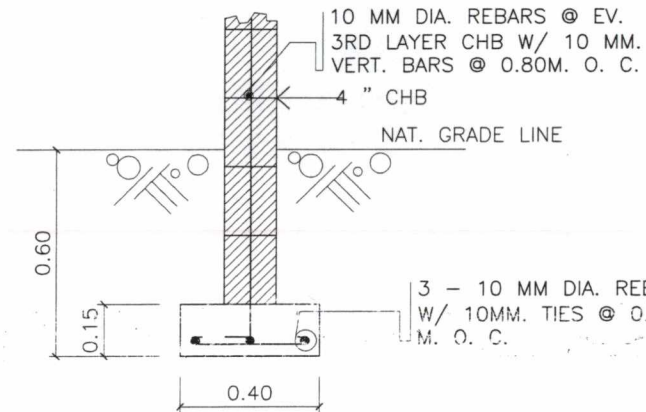
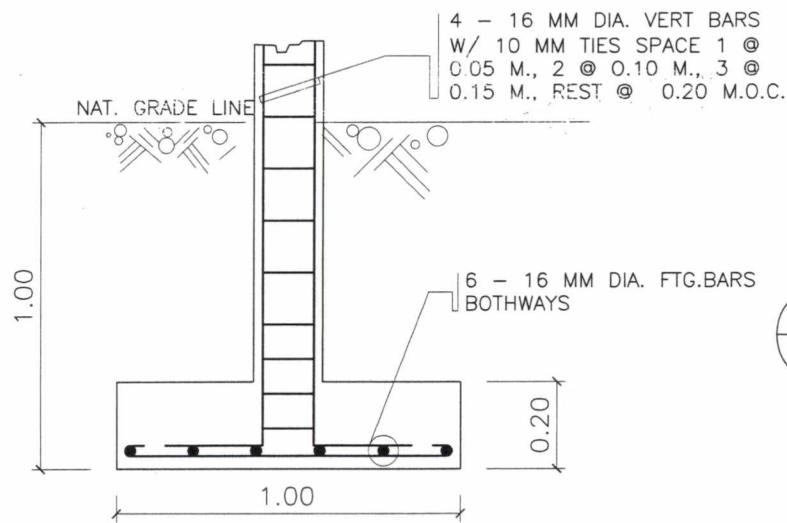
FOR BID BULLETIN

PROPOSED STAGE AT CVSU CARMONA CAMPUS

CALIFORNIA STATE UNIVERSITY - CARMONA CAMPUS



P L A N



DETAILS OF COLUMN FOOTING AND WALL FOOTING

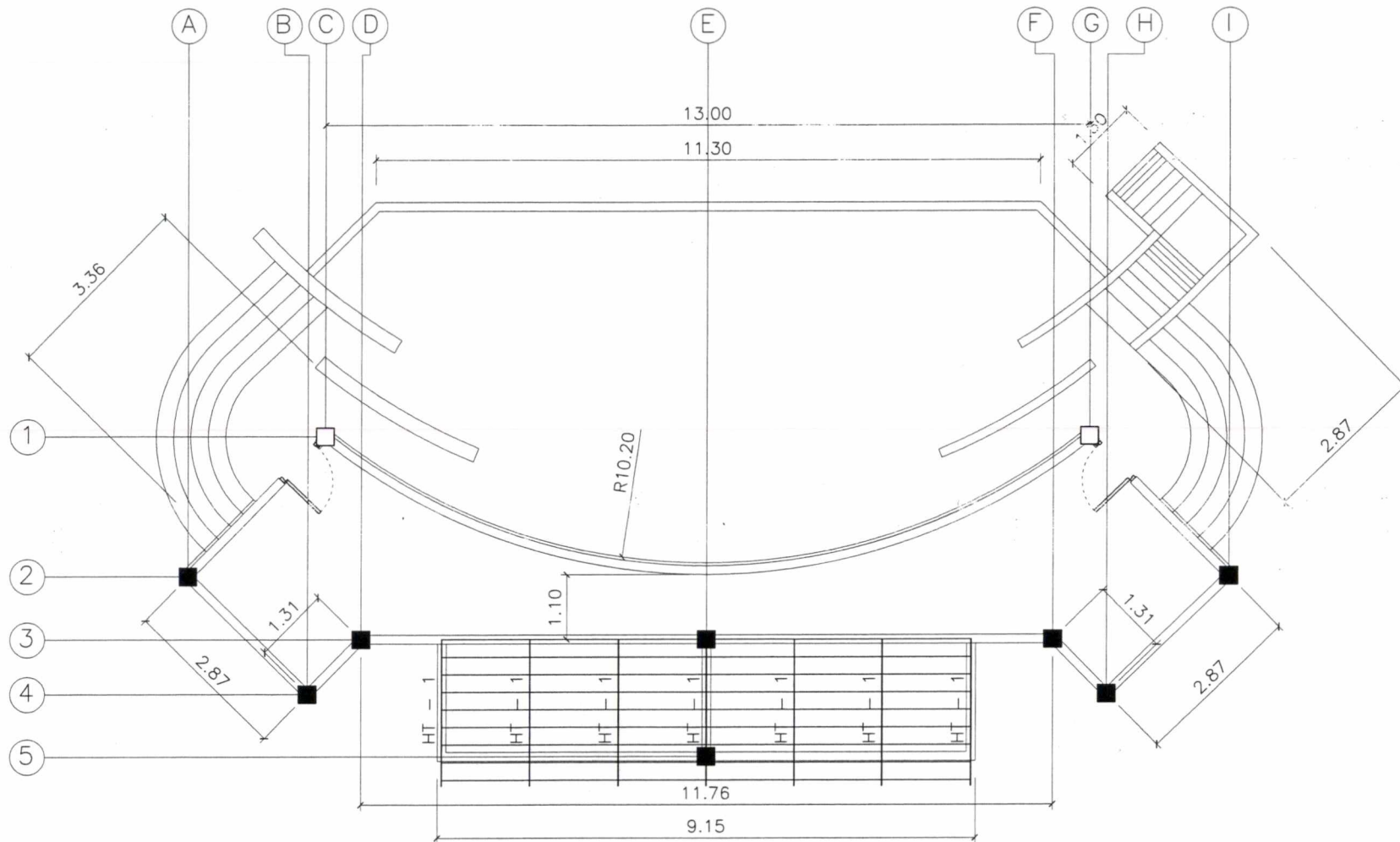
SCALE

1 :15 MTS

FOR BID BULLETIN

PROPOSED STAGE AT CVSU CARMONA CAMPUS

CAVITE STATE UNIVERSITY CARMONA CAMPUS

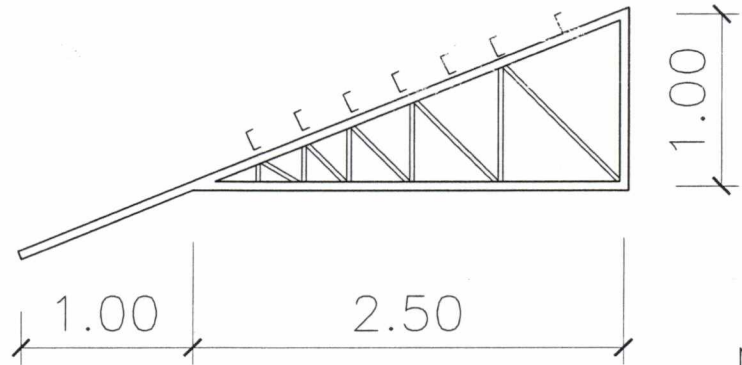



 ROOF FRAMING PLAN (REVISED)
 SCALE 1 : 75 MTS

FOR BID BULLETIN

PROPOSED STAGE AT CVSU CARMONA CAMPUS

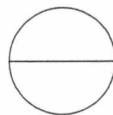
CAVITE STATE UNIVERSITY CARMONA CAMPUS



NOTE:

USE THE FOLLOWING:

- 2 - 2" x 2" x 1/4" ANGULAR BAR FOR TOP CHORDS
- 2 - 2" x 2" x 1/4" ANGULAR BAR FOR BOTTOM CHORDS
- 2 - 2" x 2" x 1/4" ANGULAR BAR FOR KING POSTS
- 2 - 1 1/2" x 1 1/2" x 1/4" ANGULAR BAR FOR WEB MEMBERS
- 2" x 4" x 1.5mm CEE PURLINS



DETAILS OF TRUSSES (REVISED)

SCALE

1 :30 MTS

FOR BID BULLETIN

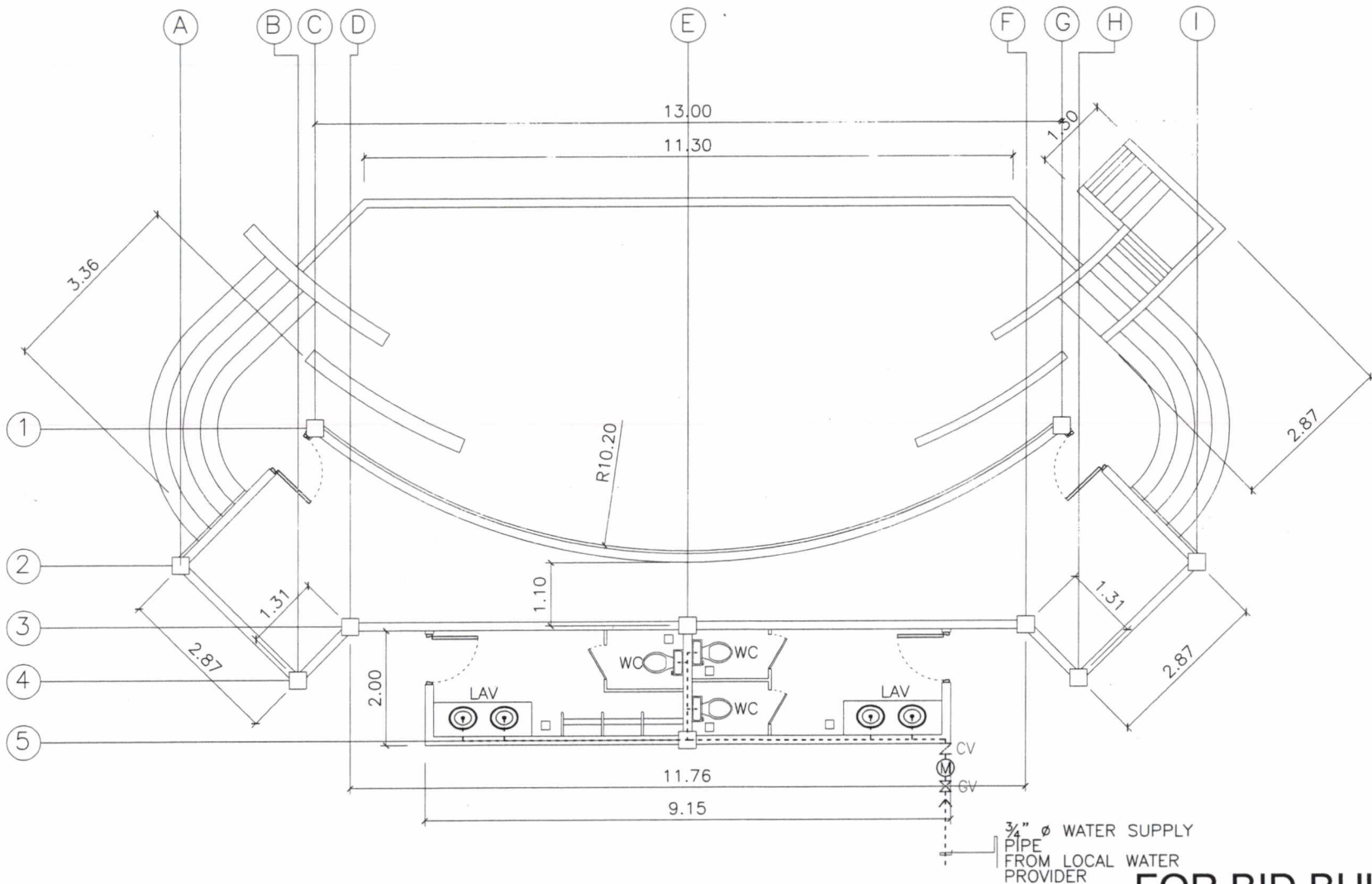
PROPOSED STAGE AT CVSU CARMONA CAMPUS

CAVITE STATE UNIVERSITY

UNIVERSITY

CARMONA CAMPUS

MANILA



COLD WATER SUPPLY LAYOUT (REVISED)
SCALE 1 : 75 MTS

3/4" Ø WATER SUPPLY
PIPE
FROM LOCAL WATER
PROVIDER

FOR BID BULLETIN

PROPOSED STAGE AT CVSU CARMONA CAMPUS
CAVITE STATE UNIVERSITY CARMONA CAMPUS

- 4" ϕ PVC PIPE WASTE LINE
- 2" ϕ PVC PIPE DRAINAGE LINE
- 1/2" ϕ PVC PIPE COLD WATER LINE
- 6" ϕ CONCRETE PIPE DRAINAGE LINE

- WC WATER CLOSET
- LAV LAVATORY
- HB HOSE BIBB
- CB CATCH BASIN
- CO CLEAN OUT
- FD FLOOR DRAIN
- GV GATE VALVE
- CV CHECK VALVE
- M WATER METER



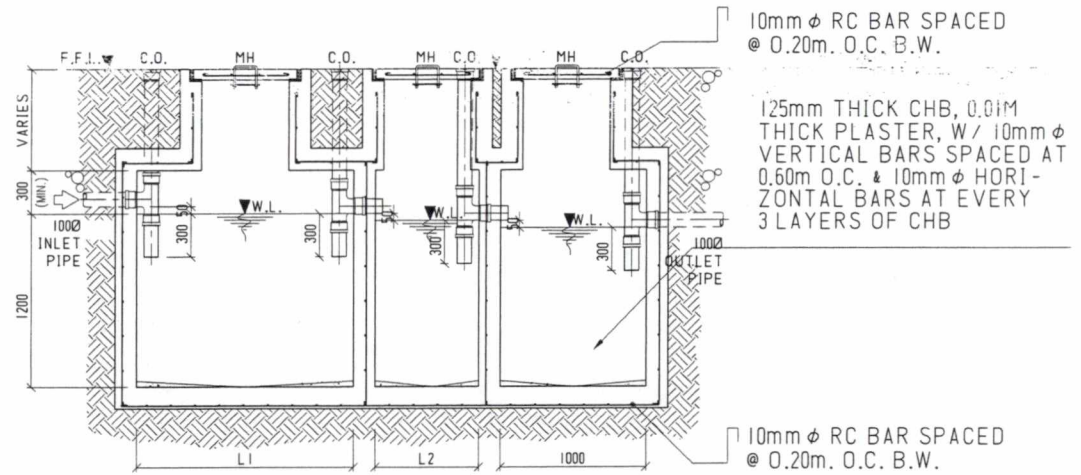
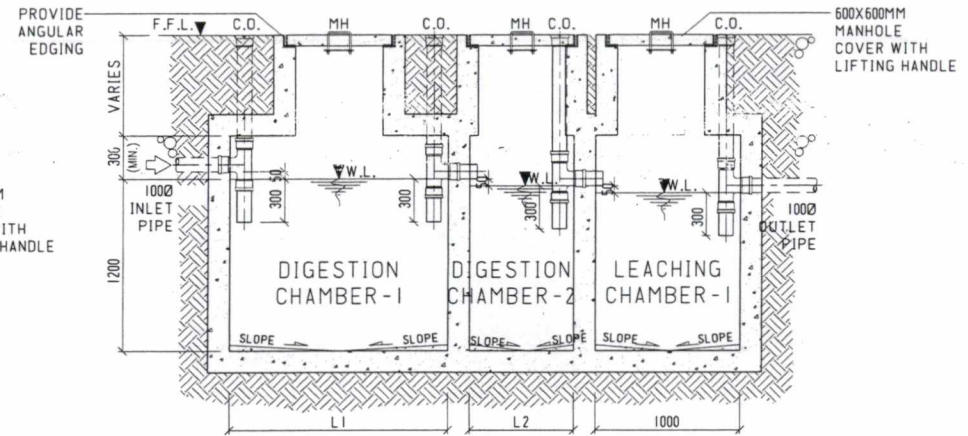
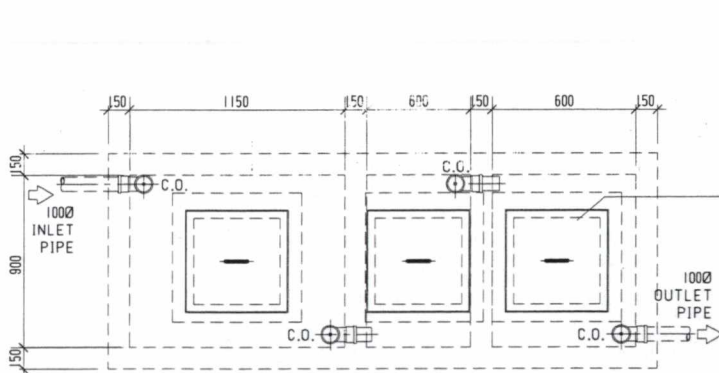
PLUMBING LEGENDS

1. ALL PLUMBING WORKS INCLUDED HEREIN SHALL BE EXECUTED IN ACCORDANCE TO THE PROVISION OF THE PHILIPPINE PLUMBING CODE, THE NATIONAL BUILDING CODE AND THE RULES AND REGULATIONS OF THE LOCAL MUNICIPALITY.
2. COORDINATE THE DRAWINGS WITH OTHER RELATED DRAWINGS AND SPECIFICATIONS. THE ENGINEER AND/OR THE ARCHITECT SHALL BE NOTIFIED IMMEDIATELY OF ANY DISCREPANCY FOUND HEREIN.
3. ALL PIPES SHALL BE INSTALLED AS INDICATED, ANY RELOCATION REQUIRED FOR PROPER EXECUTION OF THE PLUMBING WORK SHALL BE WITH PRIOR APPROVAL OF THE ENGINEER AND/OR THE ARCHITECT.
4. PROPOSED SANITARY UTILITIES SHALL CONFORM TO THE ACTUAL LOCATION, DEPTH AND INVERT ELEVATIONS OF ALL EXISTING PIPES AND STRUCTURES AS VERIFIED BY THE CONTRACTOR.
5. ALL SLOPES FOR HORIZONTAL DRAINAGE SHALL MAINTAIN ONE PERCENT (0.01) AND ONE-HALF PERCENT (0.005) MINIMUM UNLESS OTHERWISE SPECIFIED.
6. WATER SUPPLY PIPE TO FIXTURE SHALL BE SIZED IN ACCORDANCE WITH THE MANUFACTURER'S RECOMMENDATIONS.
7. ALL BRANCHES OF FIXTURE OR GROUP OF FIXTURES SHALL BE PROVIDED WITH AIR CHAMBER MADE OF CAPPED VERTICAL EXTENSION PIPE.
8. ALL WATER LINES SHALL BE HYDROSTATICALLY TESTED @ 100 PSI FOR A PERIOD OF TWO(2) HOURS BEFORE BURIED OR COVERED. POLYPROPYLENE PIPE (P.P.R.)
9. THE CONTRACTOR SHALL VERIFY ALL EXISTING UTILITIES @ SITE AND COORDINATE THE WORK WITH THE SEWER AND STORM DRAINAGE LINE EFFLUENT DISPOSAL POINT AND WATERLINE SERVICE CONNECTING/TAPPING POINT.
10. ALL PIPE SIZES AND OTHER DIMENSIONS ARE IN MILLIMETER (MM) UNLESS OTHERWISE SPECIFIED AND ARE INDICATIVE OF INSIDE DIAMETER.

FOR BID BULLETIN

PROPOSED STAGE AT CVSU CARMONA CAMPUS

CAVITE STATE UNIVERSITY CARMONA CAMPUS



DETAILS OF SEPTIC TANK
SCALE NTS

FOR BID BULLETIN

PROPOSED STAGE AT CVSU CARMONA CAMPUS

CALIFORNIA STATE UNIVERSITY - CARMONA CAMPUS