

31

HOSTEL TROPICANA  
**SITE**



CON

COMMUNAL CR

BIOSCI

PHYSCI

IH I

CAS

47  
PPS ROAD

CEMDS

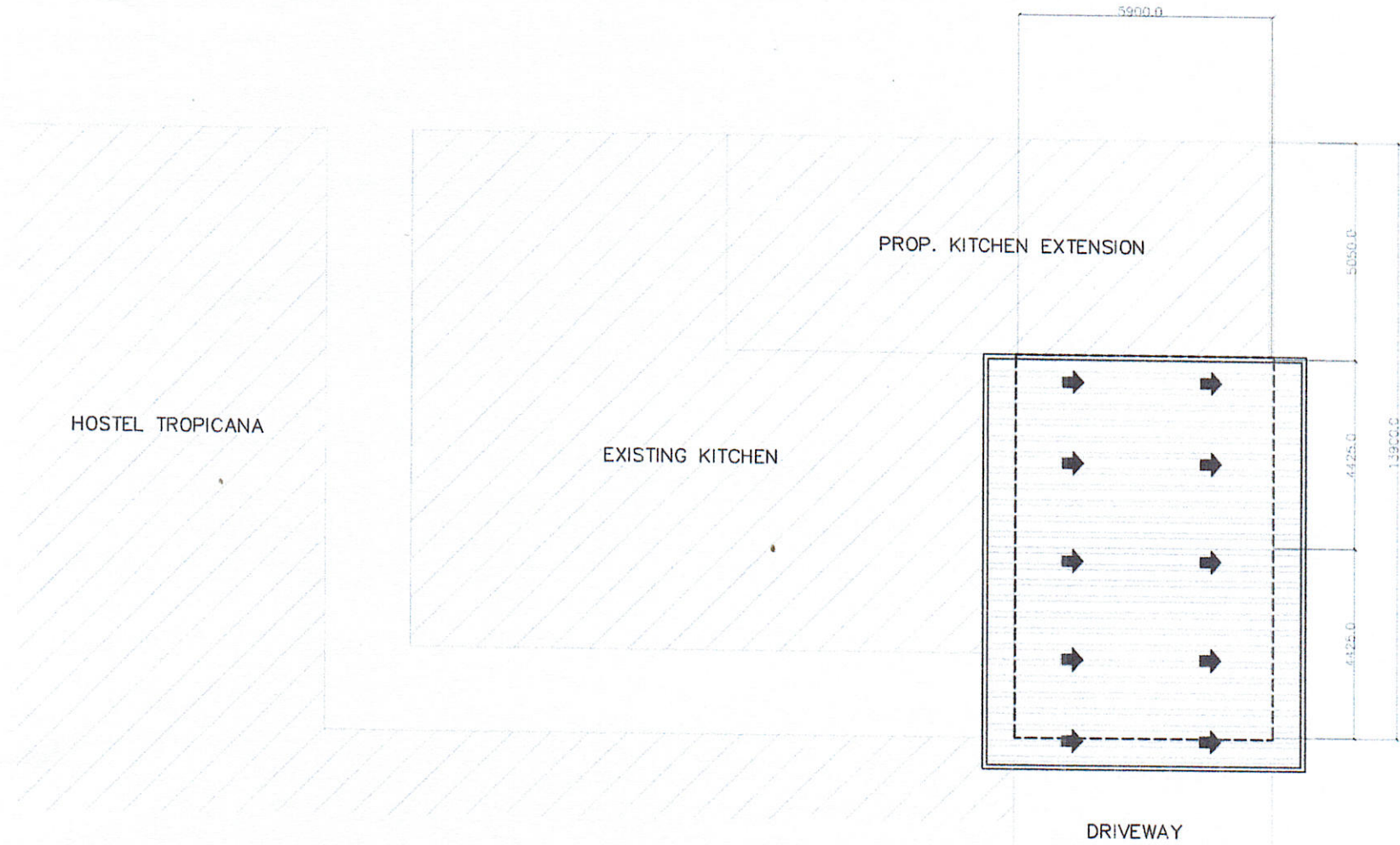
**LOCATION PLAN**



SCALE:

NTS

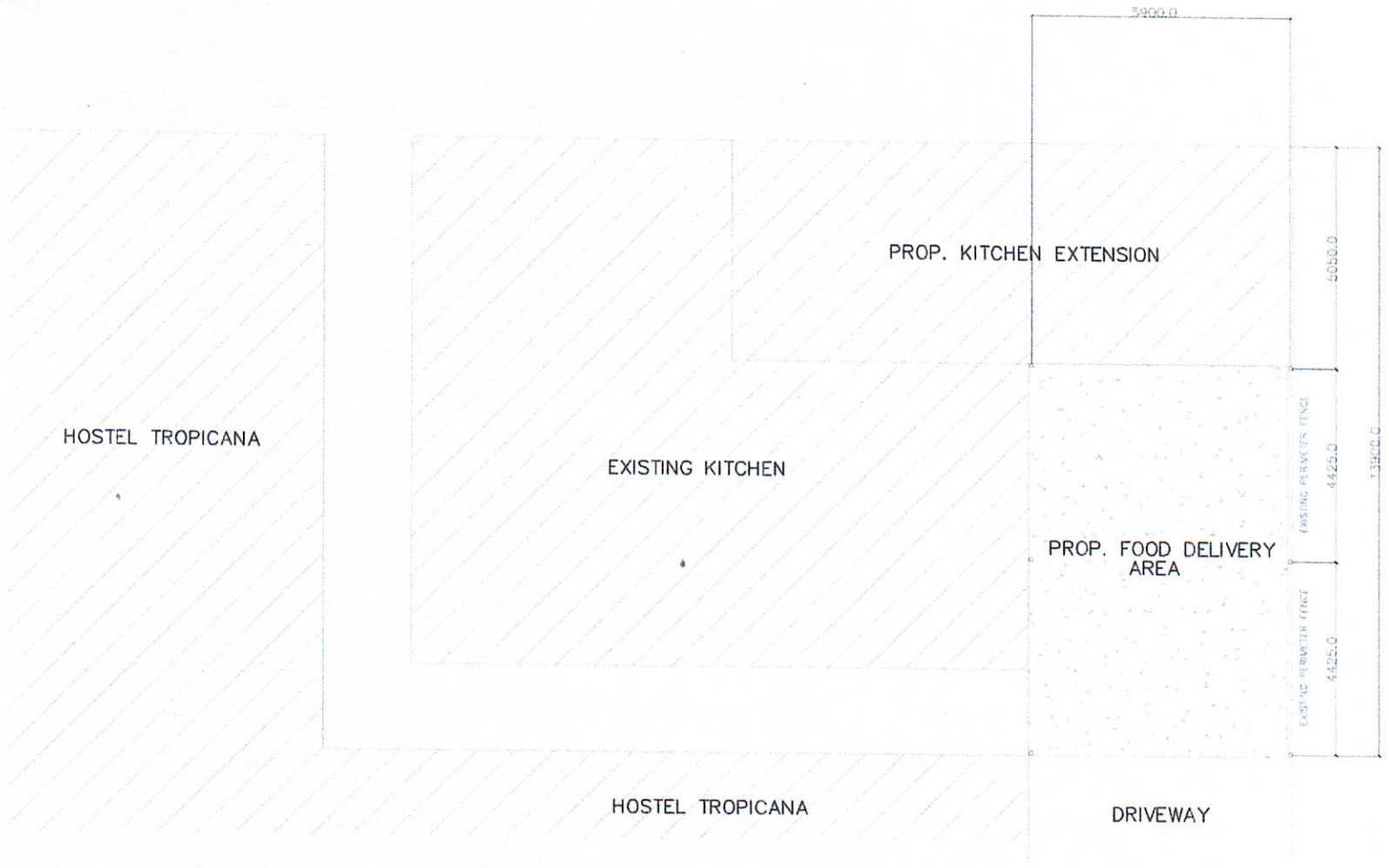
AGENCY: <b>VSU</b>	PREPARED BY:  M.N. GATDULA STAFF, PDO	END-USER:  P.G.C. ILANO HOSTEL MNGR., HOSTEL TROPICANA	ENDORSED BY:  O.B. DELOS REYES DIRECTOR, PDO	PROJECT TITLE: IMPROVEMENT OF FOOD DELIVERY AREA OF KITCHEN HOSTEL TROPICANA	RECOMMENDING APPROVAL:  M.S. ESCOBAR 2-13-2 VP, PDO	APPROVED BY:  H.D. ROBLES PRESIDENT, THIS UNIVERSITY	SHEET NO: A   1 4
-----------------------	--	---	---	---	--	---	-------------------------



**SITE DEVELOPMENT PLAN**  
 SCALE: 1:150 MTS

	PREPARED BY:  M.N. GATDULA STAFF, PDO	END-USER:  P.G.C. ILANO HOSTEL MNGR., HOSTEL TROPICANA	ENDORSED BY:  O.B. DELOS REYES DIRECTOR, PDO	PROJECT TITLE: IMPROVEMENT OF FOOD DELIVERY AREA OF KITCHEN HOSTEL TROPICANA	RECOMMENDING APPROVAL:  M.D. ESCOBAR VP, PDO	APPROVED BY:  H.D. ROBLES PRESIDENT, THIS UNIVERSITY	SHEET NO: A	2 4

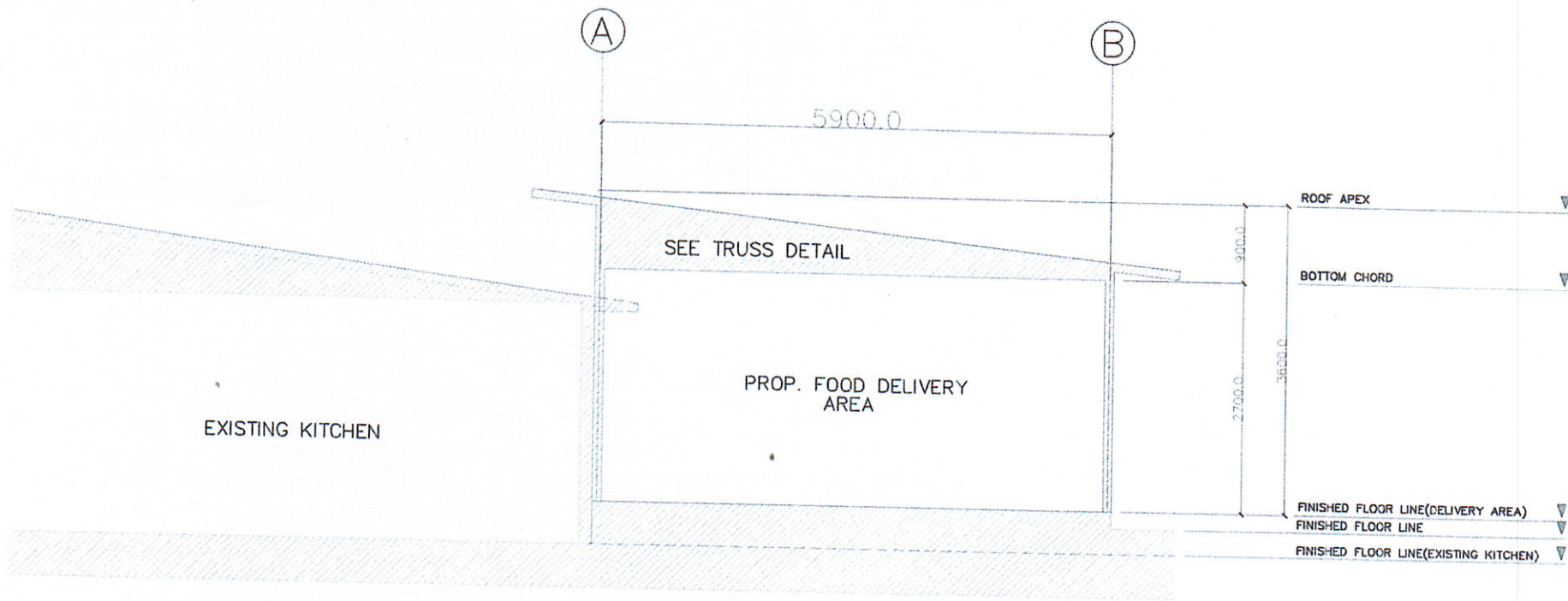




### FLOOR PLAN

SCALE: 1:150 MTS

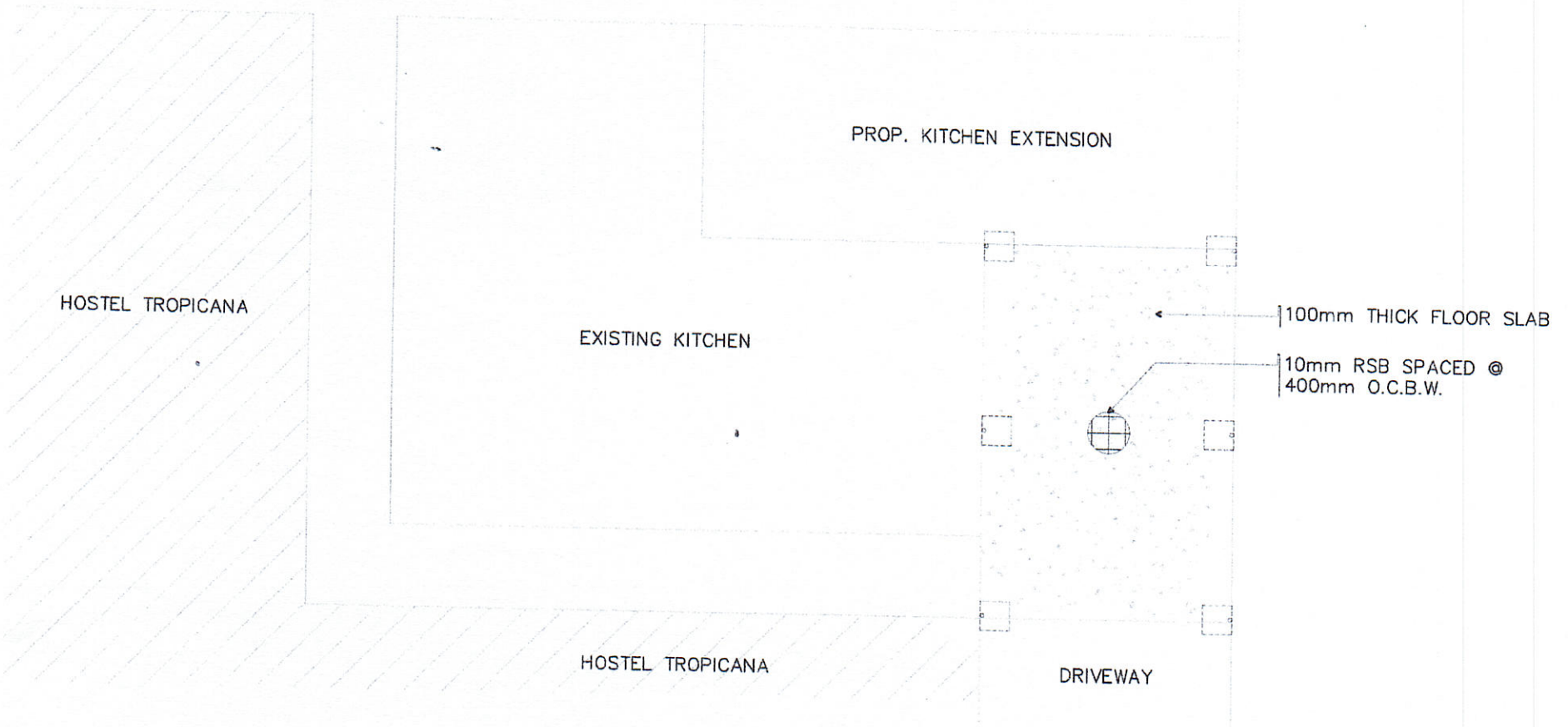
AGENCY: <b>VSU</b>	PREPARED BY: <i>M.N. GATDULA</i> M.N. GATDULA STAFF, PDO	END-USER: <i>P.G.C. ILANO</i> P.G.C. ILANO HOSTEL MNGR., HOSTEL TROPICANA	ENDORSED BY: <i>O.B. DELOS REYES</i> O.B. DELOS REYES DIRECTOR, PDO	PROJECT TITLE: IMPROVEMENT OF FOOD DELIVERY AREA OF KITCHEN HOSTEL TROPICANA	RECOMMENDING APPROVAL: <i>M. D. ESCOBAR</i> M. D. ESCOBAR VP, PDO	APPROVED BY: <i>H.D. ROBLES</i> H.D. ROBLES PRESIDENT, THIS UNIVERSITY	SHEET NO: A	3 4
-----------------------	---	--	--	--	--	---	----------------	--------




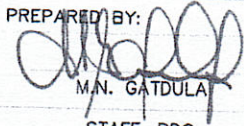
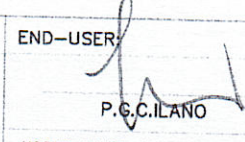
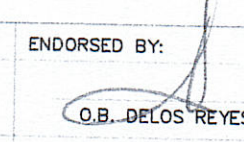
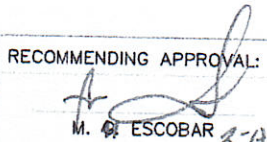
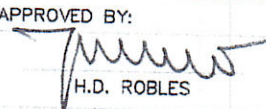
### CROSS SECTION

SCALE: 1:75 MTS

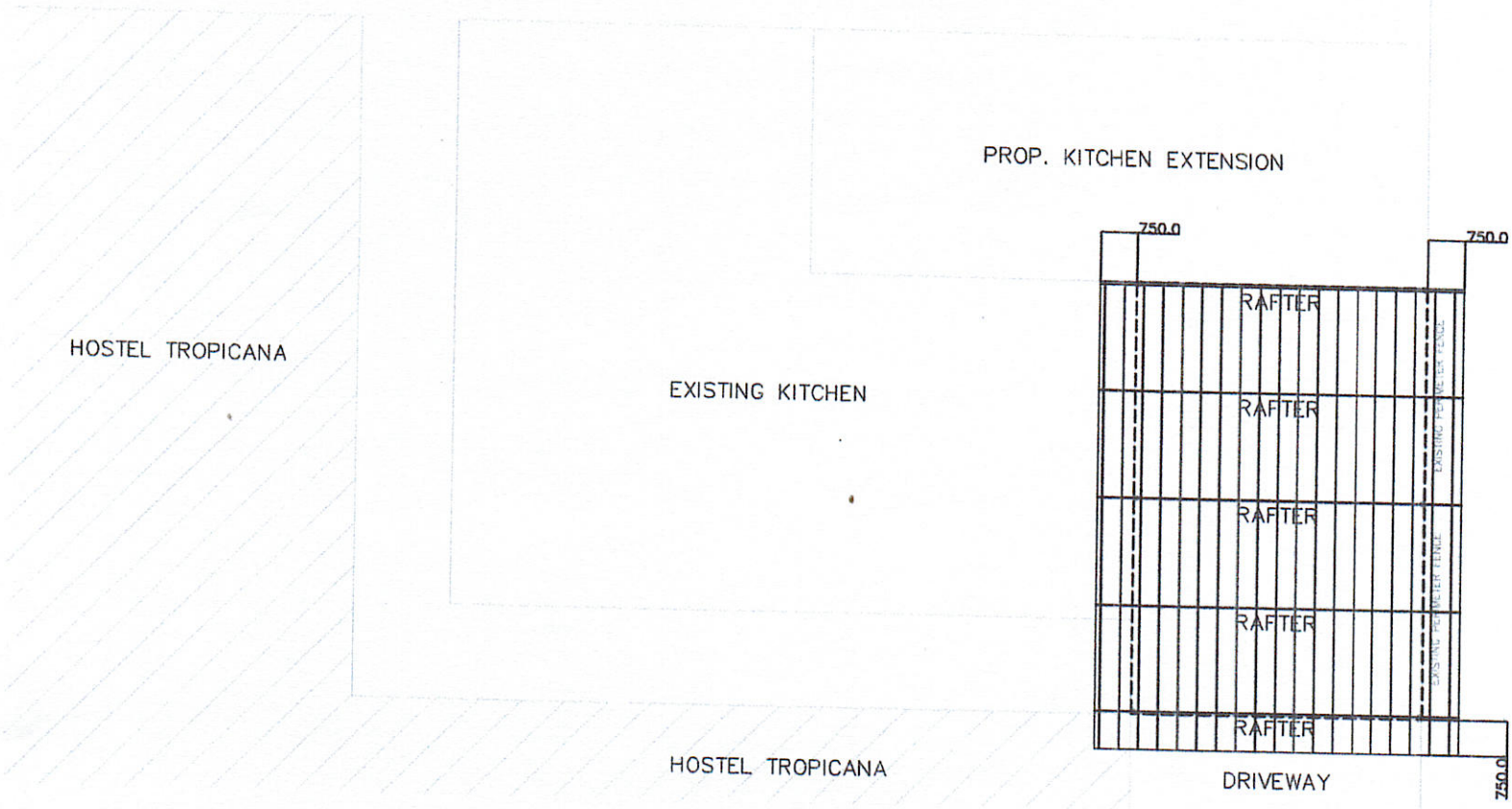
AGENCY: 	PREPARED BY:  M.N. GATDULA STAFF, PDO	END-USER:  P.C.C. ILANO HOSTEL MNGR., HOSTEL TROPICANA	ENDORSED BY:  O.B. DELOS REYES DIRECTOR, PDO	PROJECT TITLE: IMPROVEMENT OF FOOD DELIVERY AREA OF KITCHEN HOSTEL TROPICANA	RECOMMENDING APPROVAL:  M.G. ESCOBAR 2-13-22 VP, PDO	APPROVED BY:  H.D. ROBLES PRESIDENT, THIS UNIVERSITY	SHEET NO: A	4 4
								4 4



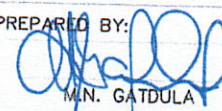
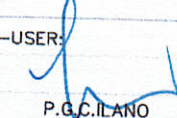
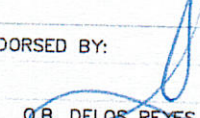
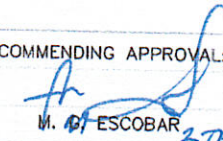
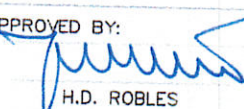

**FOUNDATION PLAN**  
 SCALE: 1:150 MTS

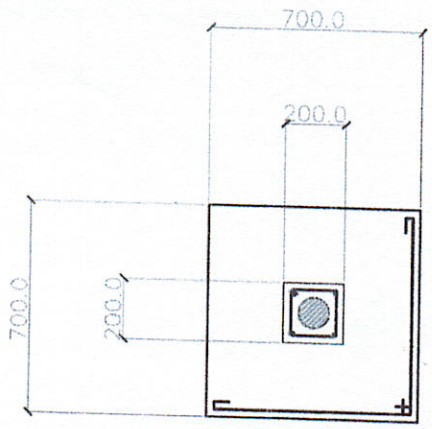
AGENCY: 	PREPARED BY:  M.N. GARDULA STAFF, PDO	END-USER:  P.G.C. ILANO HOSTEL MNGR., HOSTEL TROPICANA	ENDORSED BY:  O.B. DELOS REYES DIRECTOR, PDO	PROJECT TITLE: IMPROVEMENT OF FOOD DELIVERY AREA OF KITCHEN HOSTEL TROPICANA	RECOMMENDING APPROVAL:  M. ESCOBAR 2-13-22 VP, PDO	APPROVED BY:  H.D. ROBLES PRESIDENT, THIS UNIVERSITY	SHEET NO: <div style="border: 1px solid black; padding: 2px; display: inline-block;">           S 1            3         </div>
---	---	--	---	---	--	--	--





S
**FOUNDATION PLAN**  
 SCALE: 1:150 MTS

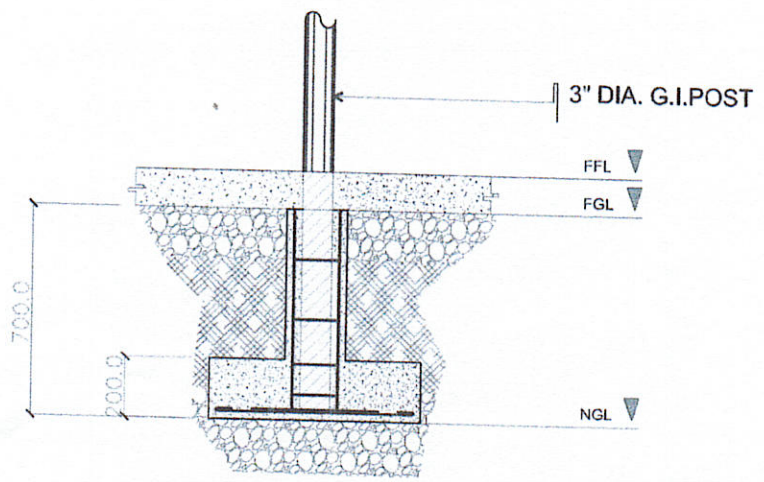
AGENCY: <b>VSU</b>	PREPARED BY:  M.N. GATDULA STAFF, PDO	END-USER:  P.G.C. ILANO HOSTEL MNGR., HOSTEL TROPICANA	ENDORSED BY:  O.B. DELOS REYES DIRECTOR, PDO	PROJECT TITLE: IMPROVEMENT OF FOOD DELIVERY AREA OF KITCHEN HOSTEL TROPICANA	RECOMMENDING APPROVAL:  M. ESCOBAR 27-22 VP, PDO	APPROVED BY:  H.D. ROBLES PRESIDENT, THIS UNIVERSITY	SHEET NO: <table border="1" style="width: 100%; border-collapse: collapse;"> <tr> <td style="text-align: center;">S</td> <td style="text-align: center;">2</td> </tr> <tr> <td style="text-align: center;">S</td> <td style="text-align: center;">3</td> </tr> </table>	S	2	S	3
S	2										
S	3										



PLAN

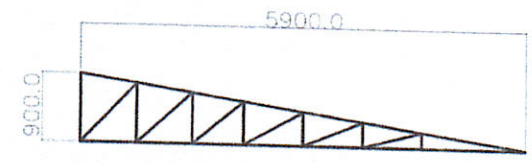
COLUMNS:  
 4-12MM DIA. VERTICAL  
 BARS W/ 10MM DIA. RSB  
 TIES 1-50MM, 2-100MM,  
 3-150MM REST @ 200MM  
 O.C.

FOOTINGS:  
 5-12MM DIA. VERTICAL  
 BARS W/ 10MM DIA. RSB  
 SPACED @ EVERY 600  
 M.O.C.

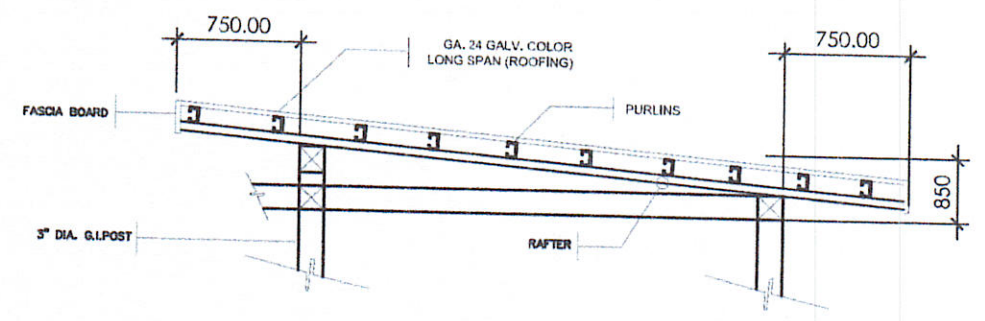


SECTION

**COLUMN AND FOOTING DETAIL**  
 SCALE: 1:25 MTS



RAFTER

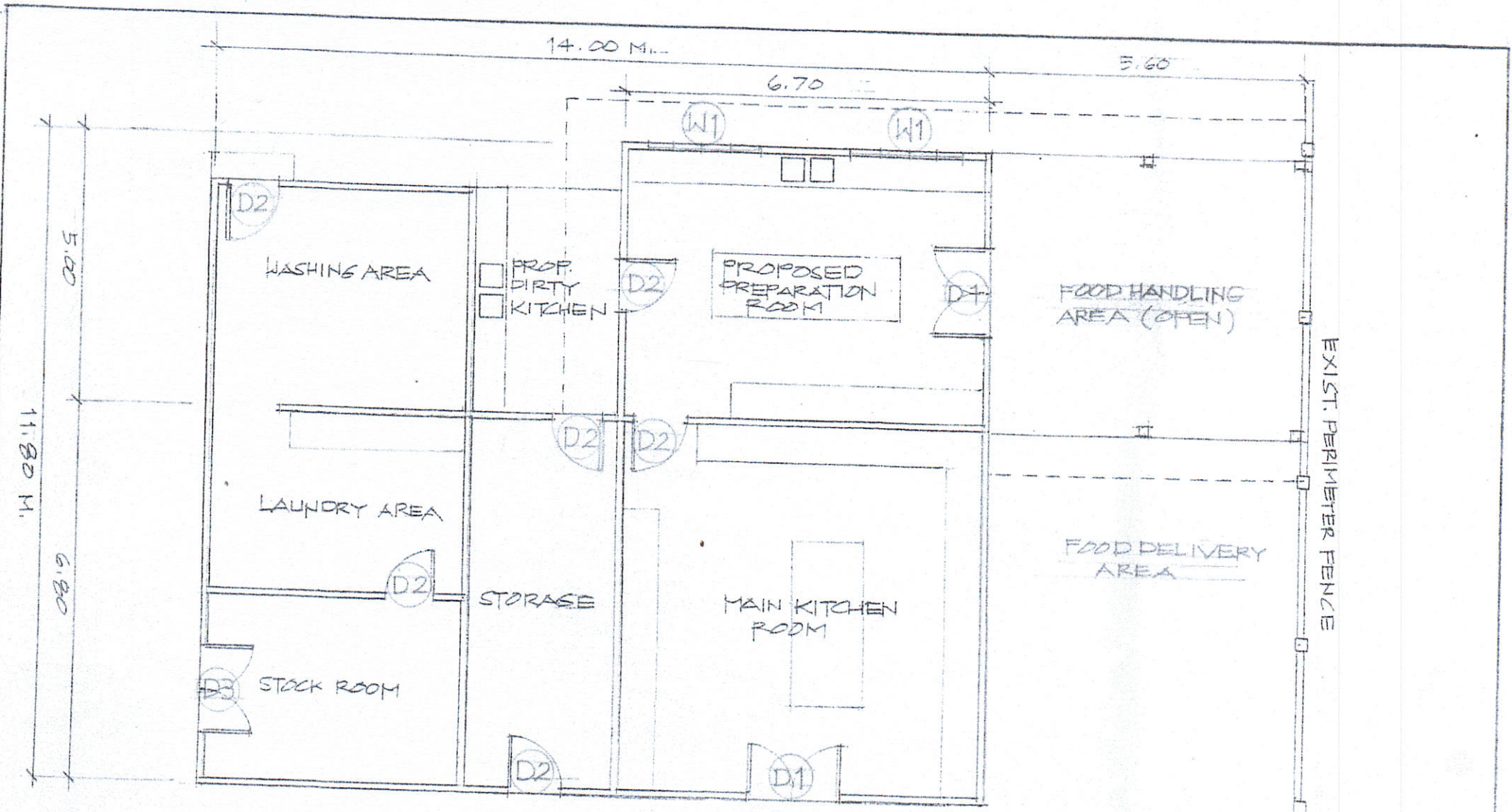


SPOT DETAIL "A"

**ROOFING DETAILS**  
 SCALE: NTS

AGENCY: <b>VSU</b>	PREPARED BY: <i>M.N. GATDULA</i> M.N. GATDULA STAFF, PDO	END-USER: <i>P.G.C. ILANO</i> P.G.C. ILANO HOSTEL MNGR., HOSTEL TROPICANA	ENDORSED BY: <i>O.B. DELOS REYES</i> O.B. DELOS REYES DIRECTOR, PDO	PROJECT TITLE: IMPROVEMENT OF FOOD DELIVERY AREA OF KITCHEN HOSTEL TROPICANA	RECOMMENDING APPROVAL: <i>M. G. ESCOBAR</i> M. G. ESCOBAR VP, PDO	APPROVED BY: <i>H.D. ROBLES</i> H.D. ROBLES PRESIDENT, THIS UNIVERSITY	SHEET NO: 3 3
							S


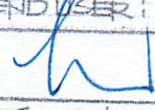
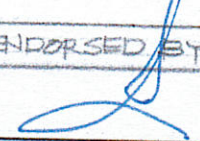
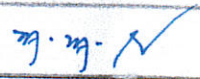
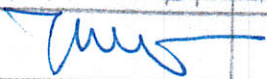




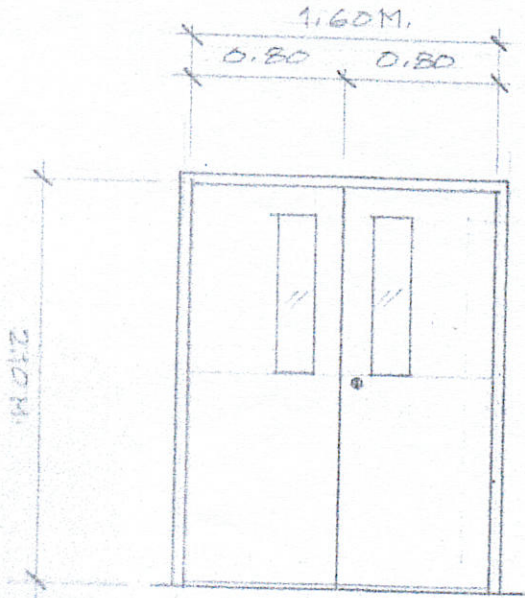
# FLOOR PLAN

SCALE :

1 : 100 M.

AGENCY	DRAWN BY:	END USER:	ENDORSED BY:	PROJ. TITLE:	REC. APPROVAL:	APPROVED BY:	SHT. NO.
CVSU				REPAIR & IMPROVEMENT OF KITCHEN & STORAGE AT HOSTEL TROPICANA			1
	A. L. LLANADO	P. G. C. ILANO	O. DELOS REYES		M. ESCOBAR	H. D. ROBLES	8
	FPS STAFF	HOSTEL, MANAGER	DIR. PLANNING & DEV. OFFICE		VP, PDO	PRESIDENT	





**DOOR-1**

DOUBLE STAINLESS DOOR  
W/ 5/32" THK. CLEAR GLASS  
WITH STAINLESS HINGES &  
HEAVY DUTY LOCK SET

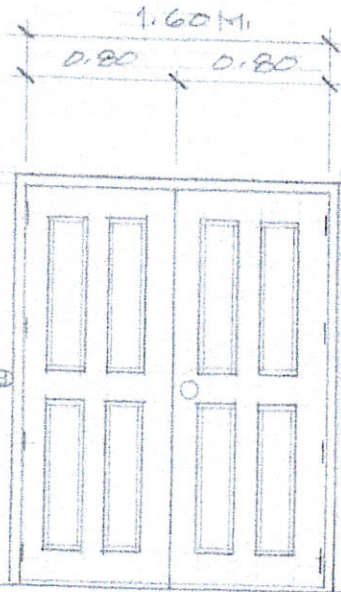
TWO (2) SETS



**DOOR-2**

4 SETS STEEL DOORS (LEFT)  
& 2 SETS (RIGHT) WITH  
COMPLETE HEAVY DUTY  
ACCESSORIES

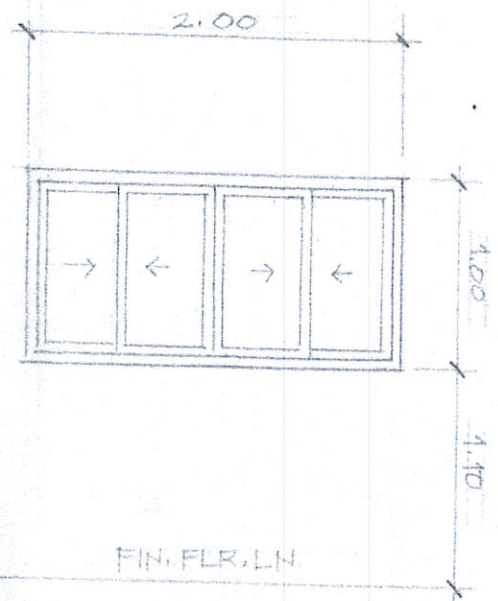
SIX (6) SETS



**DOOR-3**

DOUBLE SWING STEEL  
DOOR WITH COMPLETE  
HEAVY DUTY ACC.

ONE (1) SET



**WINDOW**

ALUMINUM SLIDING WINDOW  
POWDER COATED (WHITE)  
WITH COMPLETE ACC.

TWO (2) SETS

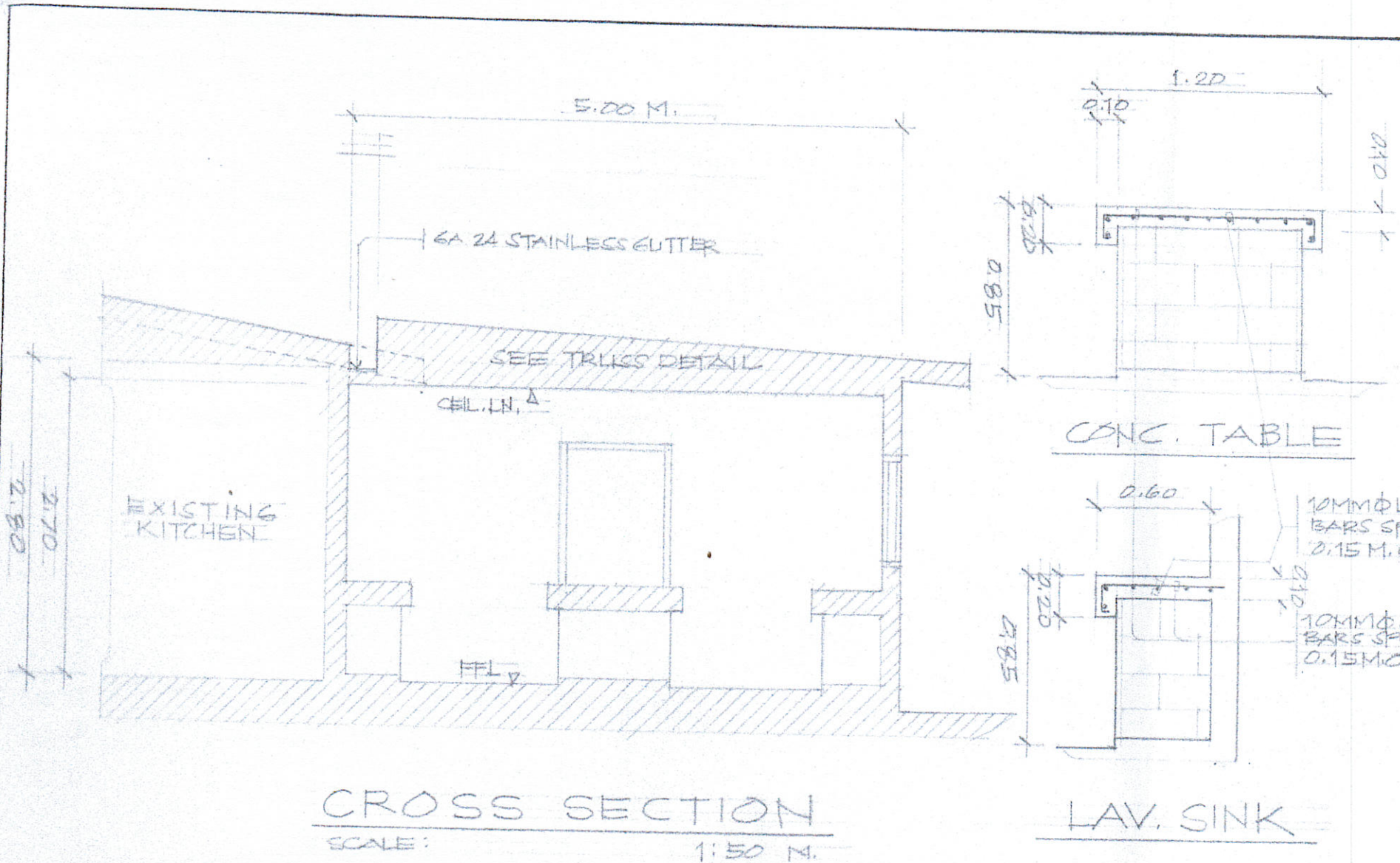
**SCHEDULE OF DOORS & WINDOW**

SCALE:

1:40 M.

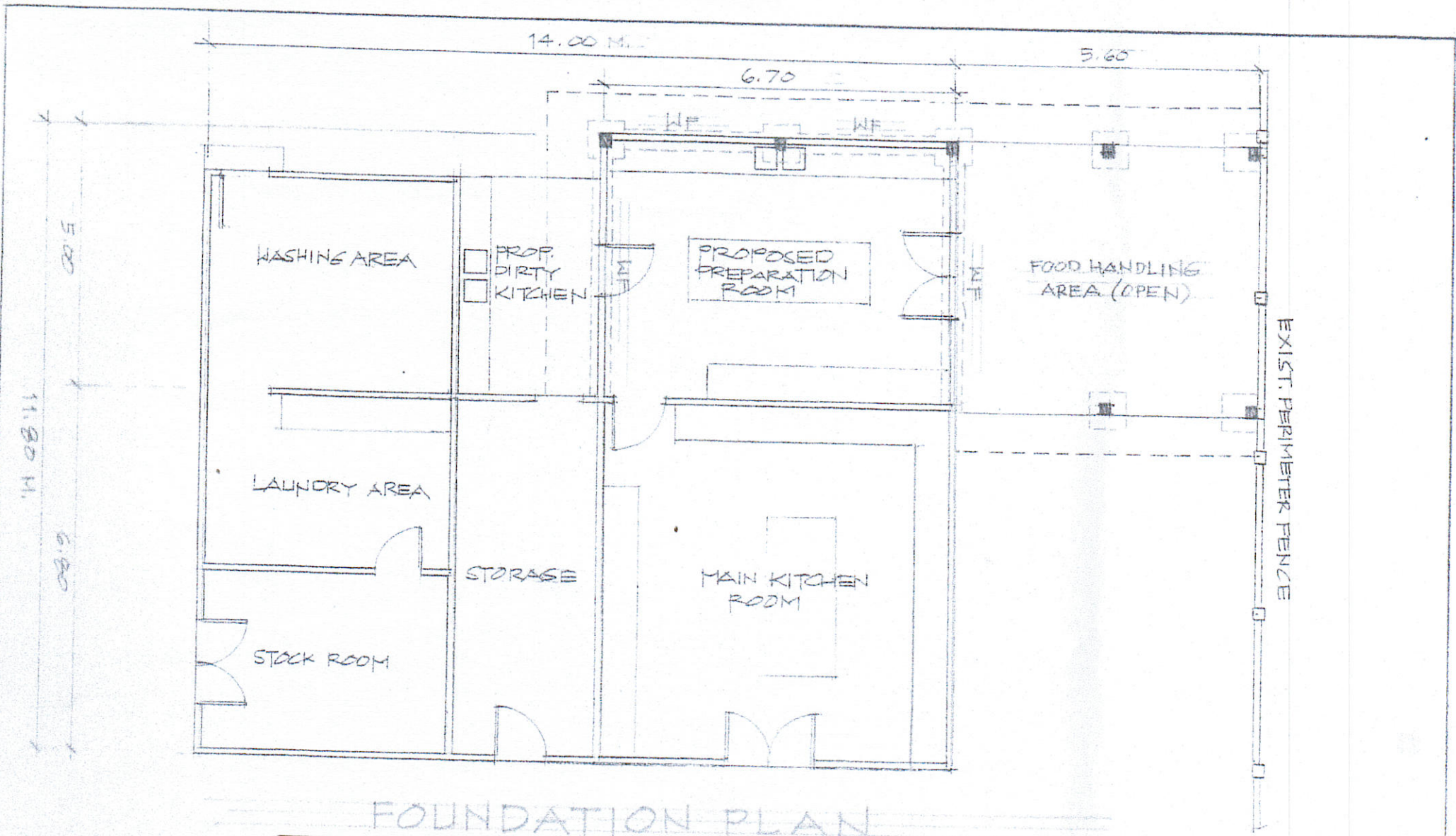
AGENCY	DRAWN BY:	ENGINEER:	ENDORSED BY:	PROJ. TITLE:	REG. APPROVAL:	APPROVED BY:	SHT. NO.
CVSU				REPAIR & IMPROVEMENT OF KITCHEN & STORAGE AT HOSTEL TROPICANA			2
	FPS STAFF	HOSTEL, MANAGER	DIR. PLANNING & DEV. OFFICE		M. ESCOBAR VP, PDO	H. D. ROBLES PRESIDENT	8





AGENCY	DRAWN BY:	END USER:	ENDORSED BY:	PROJ. TITLE:	REC. APPROVAL:	APPROVED BY:	SHT. NO.
CVSU	<i>Am</i> A. LLAMADO	<i>h</i> P. G. ILAND	<i>L</i> O. DELOS REYES	REPAIR & IMPROVEMENT OF KITCHEN & STORAGE AT HOSTEL TROPICANA	<i>g.g.</i> M. ESCOBAR	<i>mu</i> H. D. ROBLES	3
	FPS STAFF	HOSTEL MANAGER	DIR. PLANNING & DEV. OFFICE		VP, PDO	PRESIDENT	8

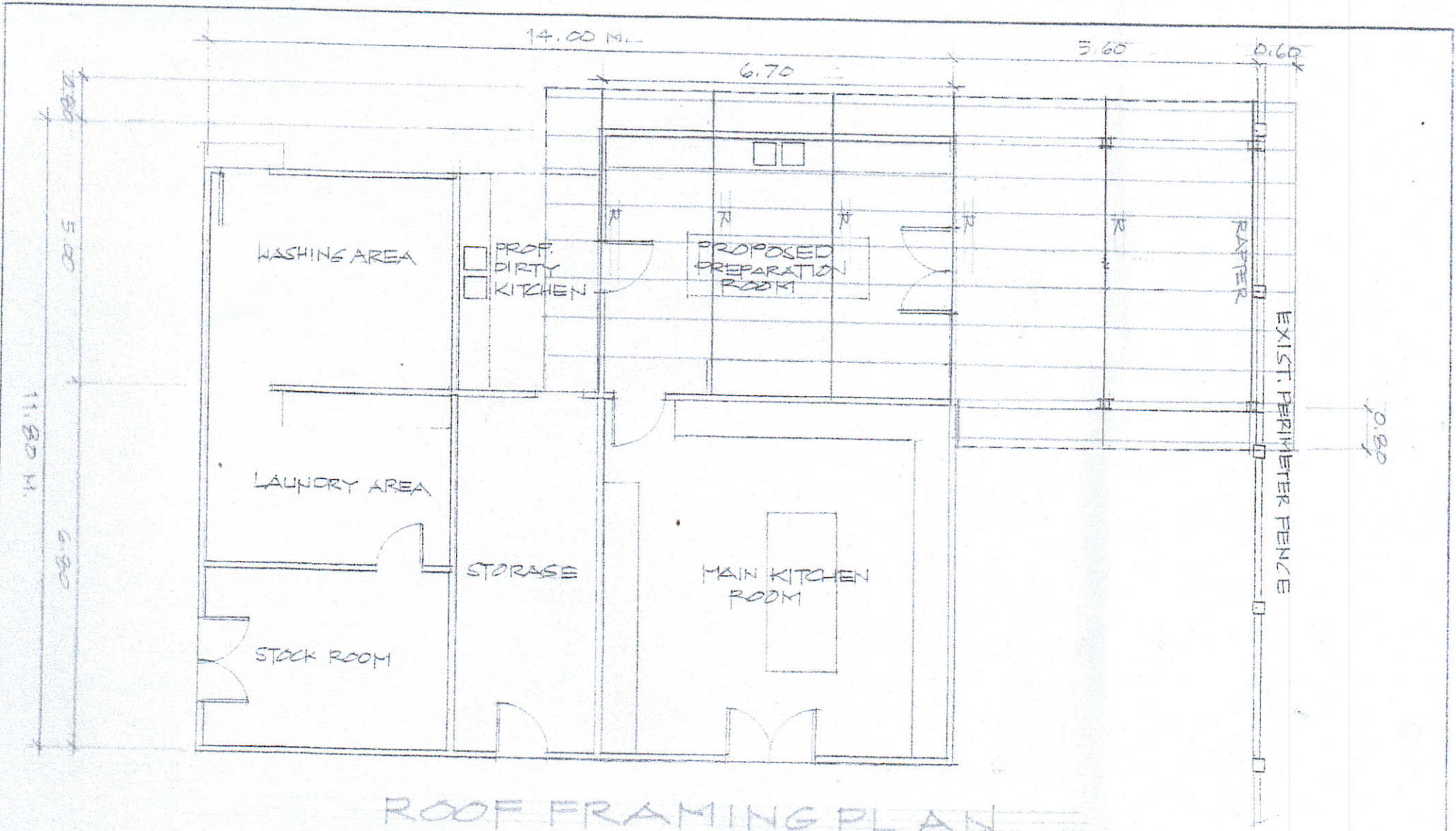




FOUNDATION PLAN  
SCALE: 1:100 M.

AGENCY	DRAWN BY:	END USER:	ENDORSED BY:	PROJ. TITLE:	REC. APPROVAL:	APPROVED BY:	SHT. NO.
CVSU	<i>[Signature]</i> A. L. DAMADO	<i>[Signature]</i> P. G. C. ILANO	<i>[Signature]</i> O. DELOS REYES	REPAIR & IMPROVEMENT OF KITCHEN & STORAGE AT HOSTEL TROPICANA	<i>[Signature]</i> M. ESCOBAR	<i>[Signature]</i> H. D. ROBLES	4
	STAFF	HOSTEL / MANAGER	PLANNING & DEV. OFFICE		VP, PDO	PRESIDENT	8



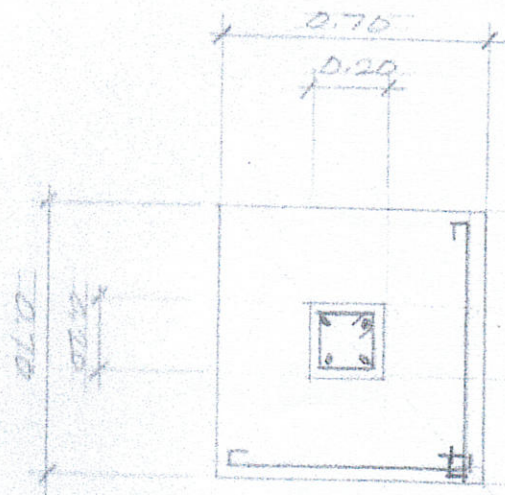


SCALE:

1:100 M.

AGENCY	DRAWN BY:	ENDORSED BY:	ENDORSED BY:	PROJ. TITLE:	REC. APPROVAL:	APPROVED BY:	SHT. NO.
CVSU	<i>[Signature]</i> A. LILLANADO	<i>[Signature]</i> P. G. CHIANO	<i>[Signature]</i> O. DELOS REYES	REPAIR & IMPROVEMENT OF KITCHEN & STORAGE AT HOSTEL TROPICANA	<i>[Signature]</i> M. ESCOBAR	<i>[Signature]</i> H. D. ROBLES	5
	STAFF	HOSTEL, MANAGER	DIR. PLANNING & DEV. OFFICE		VP, PDO	PRESIDENT	8

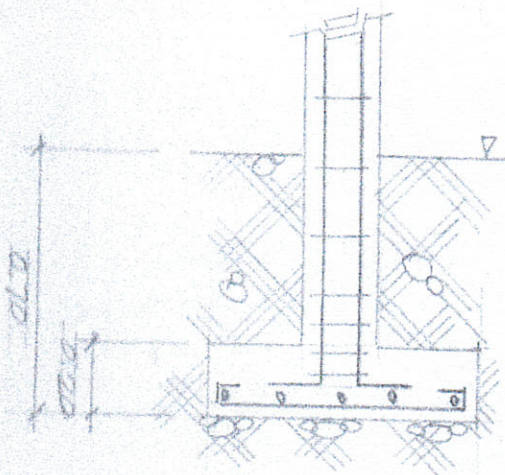




**COLUMNS**  
 4-12 MM  $\phi$  VERTICAL BARS W/ 10MM  $\phi$  RSB TIES 1-0.05, 2-0.10, 3-0.15, REST @ 0.20 M. O.C.

**FOOTINGS**  
 5-12 MM  $\phi$  RSB FOOTING BARS BOTHWAYS

PLAN

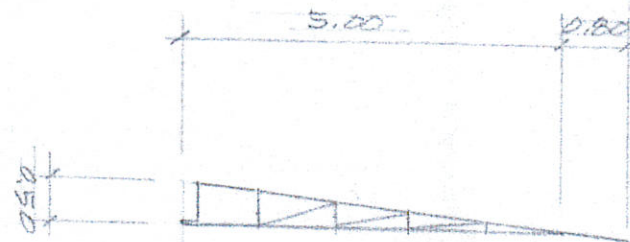


5" C4B WITH 10MM  $\phi$  VERT. & HOR. BARS SP. EVERY 0.60 M. O. C.

3-10MM  $\phi$  LONG BARS W/ 10MM STIRRUPS SP. EV. 0.30 M. O. CENTER

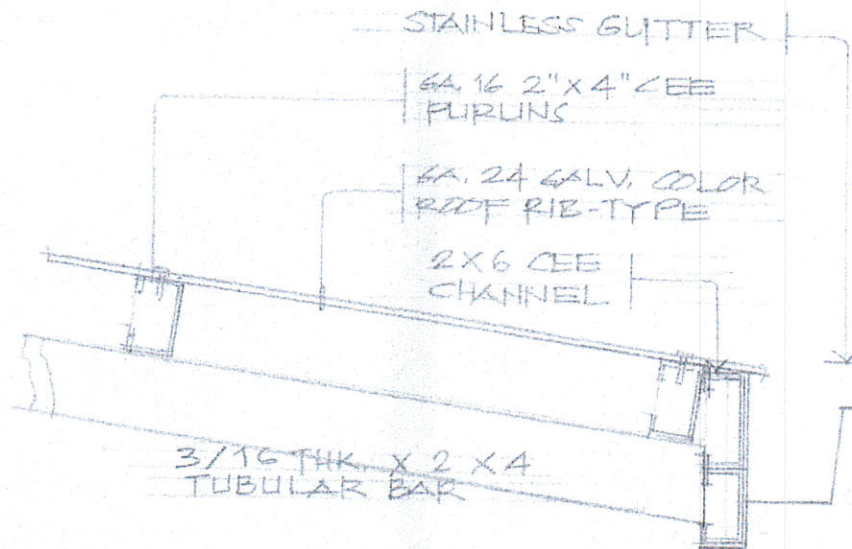
WALL FOOTING

S. 1:20 M.



RAFTER

S. 1:100 M.

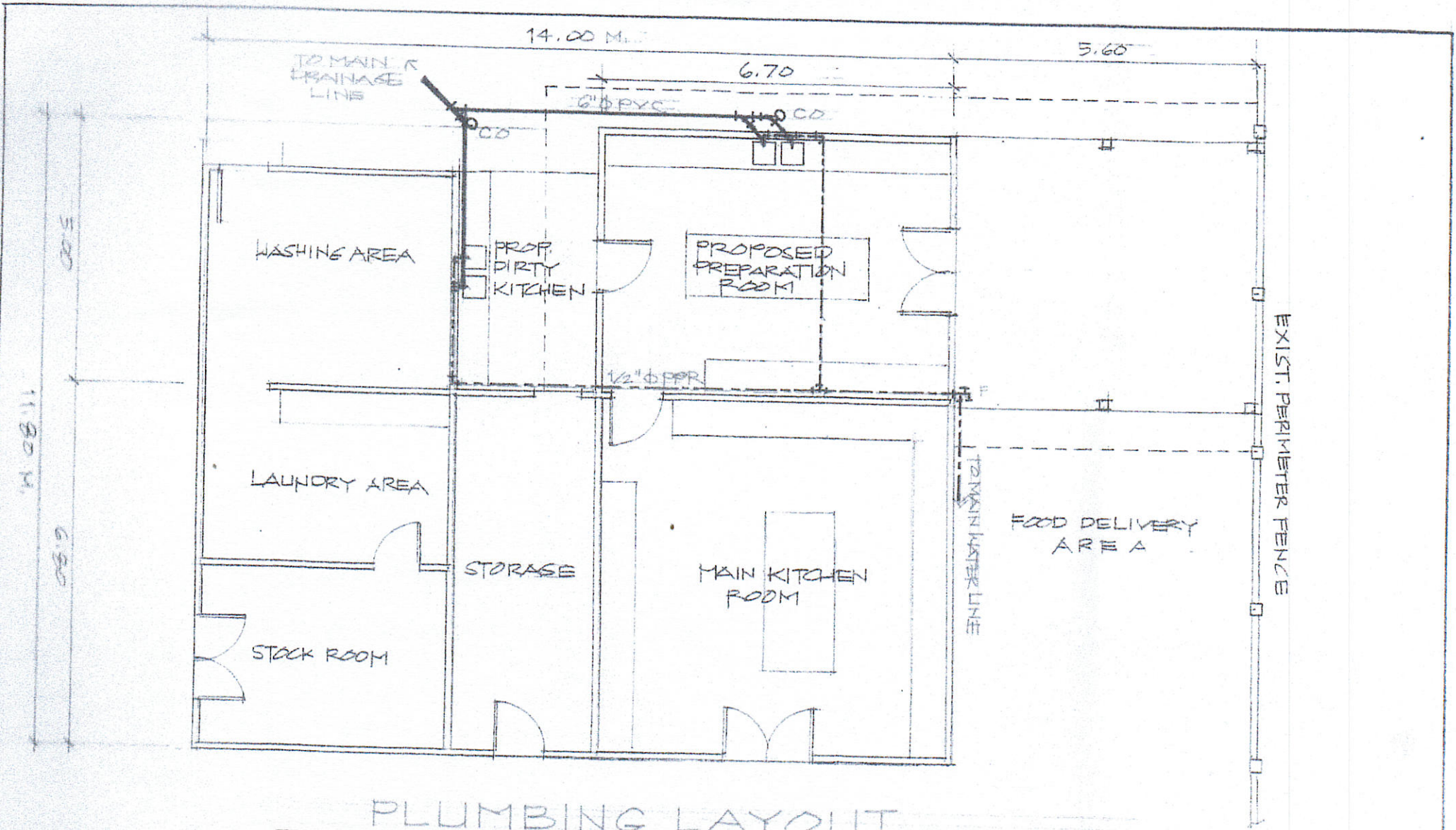


SPOT DET

S. 1:10 M.

AGENCY	DRAWN BY:	END USER:	ENDORSED BY:	PROJ. TITLE:	REC. APPROVAL:	APPROVED BY:	SHT. NO.
CVSU	<i>[Signature]</i>	<i>[Signature]</i>	<i>[Signature]</i>	REPAIR & IMPROVEMENT OF KITCHEN & STORAGE AT HOSTEL TROPICANA	<i>[Signature]</i>	<i>[Signature]</i>	6
	A. ULLAMADO	P. S. C. ILANS	O. DELOS REYES		M. ESCOBAR	H. D. ROBLES	8
	FP5 STAFF	HOSTEL, MANAGER	DIR. PLANNING & DEV. OFFICE		VP, PDO	PRESIDENT	





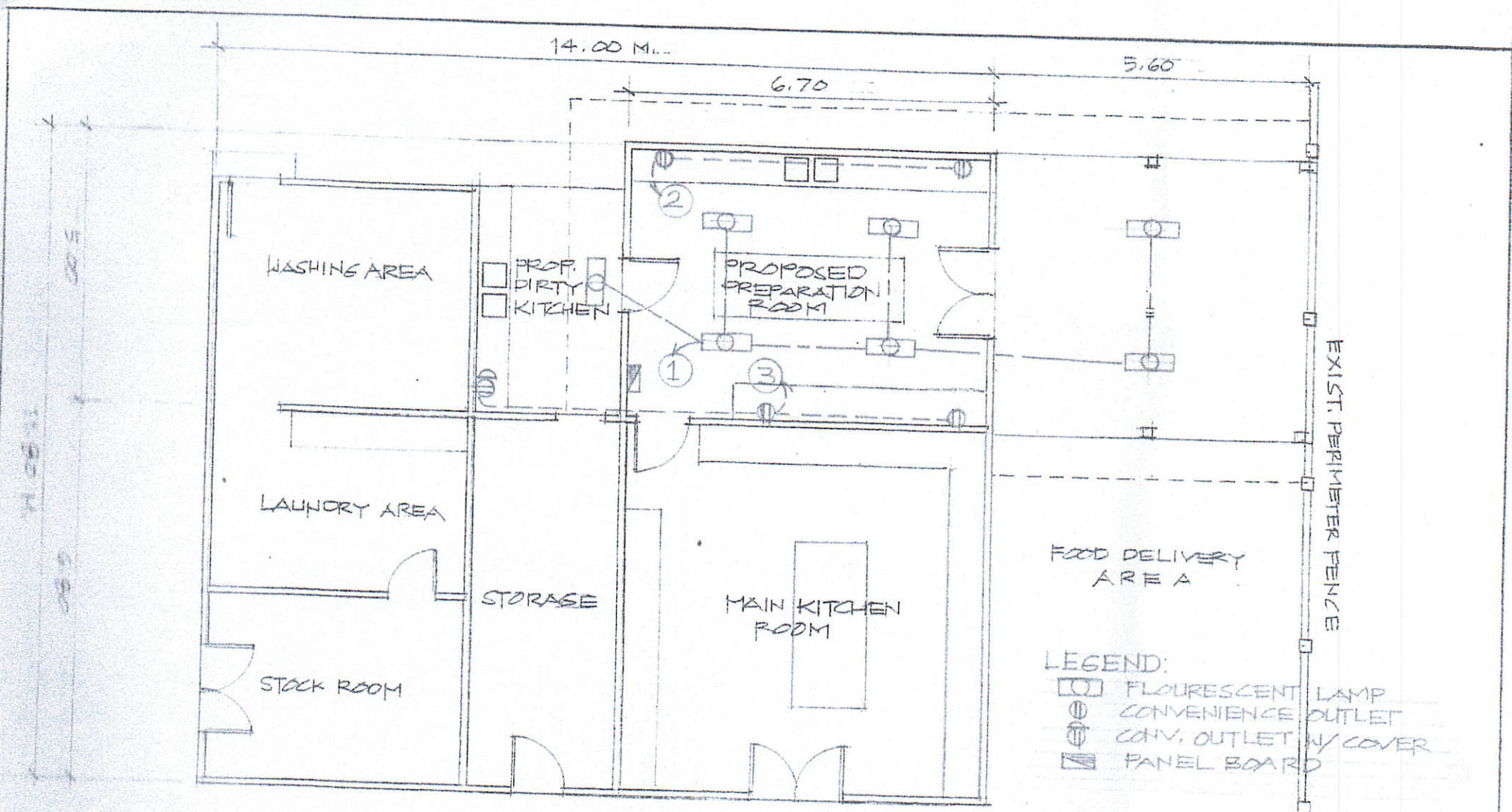
# PLUMBING LAYOUT

SCALE :

1:100 M.

AGENCY	DRAWN BY:	ENGINEER:	ENDORSED BY:	PROJ. TITLE:	REC. APPROVAL:	APPROVED BY:	SHT. NO.
CVSU	<i>[Signature]</i> A. ULLAMADO	<i>[Signature]</i> P.G. C. ILANO	<i>[Signature]</i> O. DELOS REYES	REPAIR & IMPROVEMENT OF KITCHEN & STORAGE AT HOSTEL TROPICANA	<i>[Signature]</i> M. ESCOBAR	<i>[Signature]</i> H. D. ROBLES	7
	HPS STAFF	HOSTEL MANAGER	DIR. PLANNING & DEV. OFFICE		VP, PDO	PRESIDENT	8





## LIGHTING & POWER OUTLET LAYOUT

SCALE :

1:100 M.

AGENCY	DRAWN BY:	END USER:	ENDORSED BY:	PROJ. TITLE:	REG. APPROVAL:	APPROVED BY:	SHT. NO.
CVSU	<i>[Signature]</i> A. LLAMADO	<i>[Signature]</i> P.G. CILANO	<i>[Signature]</i> O. DELOS REYES	REPAIR & IMPROVEMENT OF KITCHEN & STORAGE AT HOSTEL TROPICANA	<i>[Signature]</i> M. N. ESCOBAR	<i>[Signature]</i> H. D. ROBLES	8
	RPS STAFF	HOSTEL MANAGER	DIR. PLANNING & DEV. OFFICE		VP, PDO	PRESIDENT	8