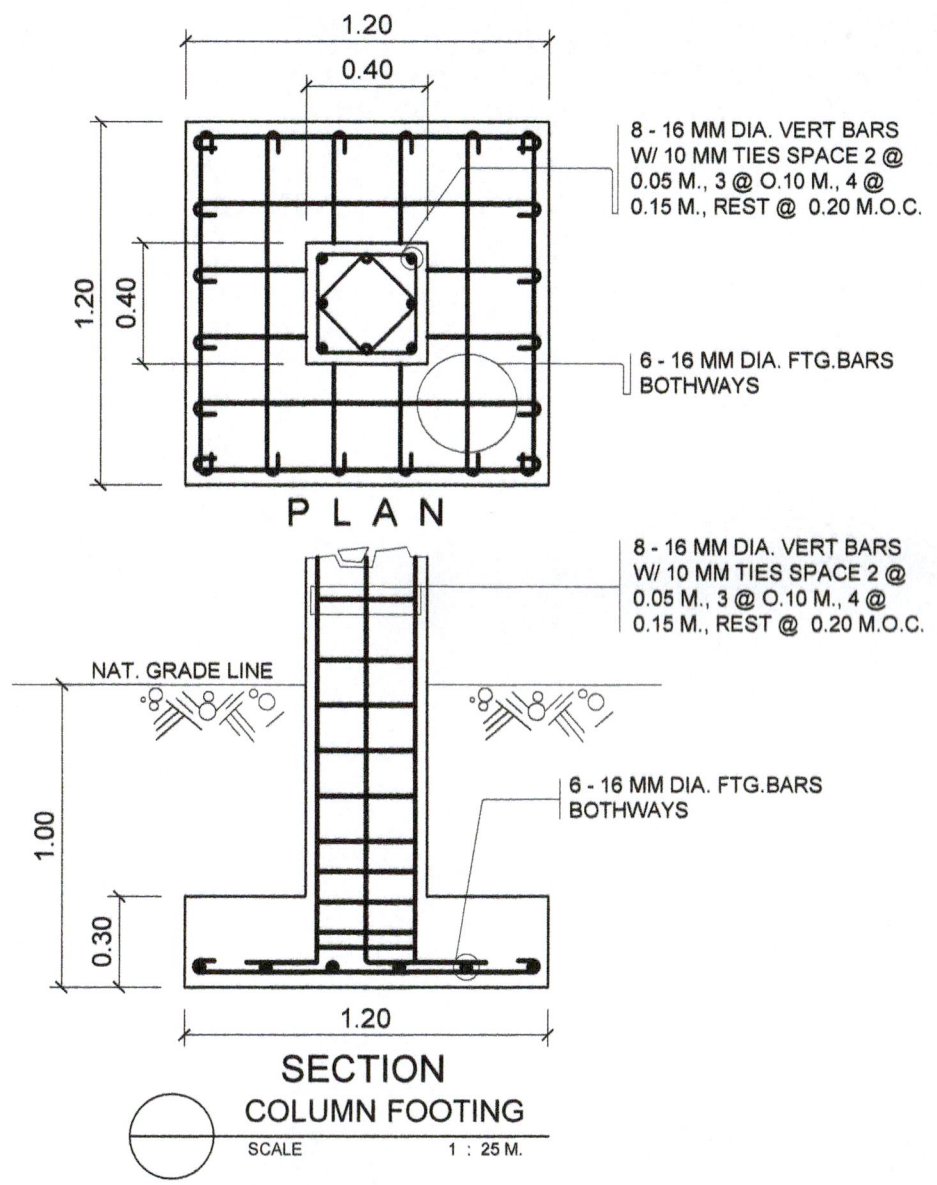
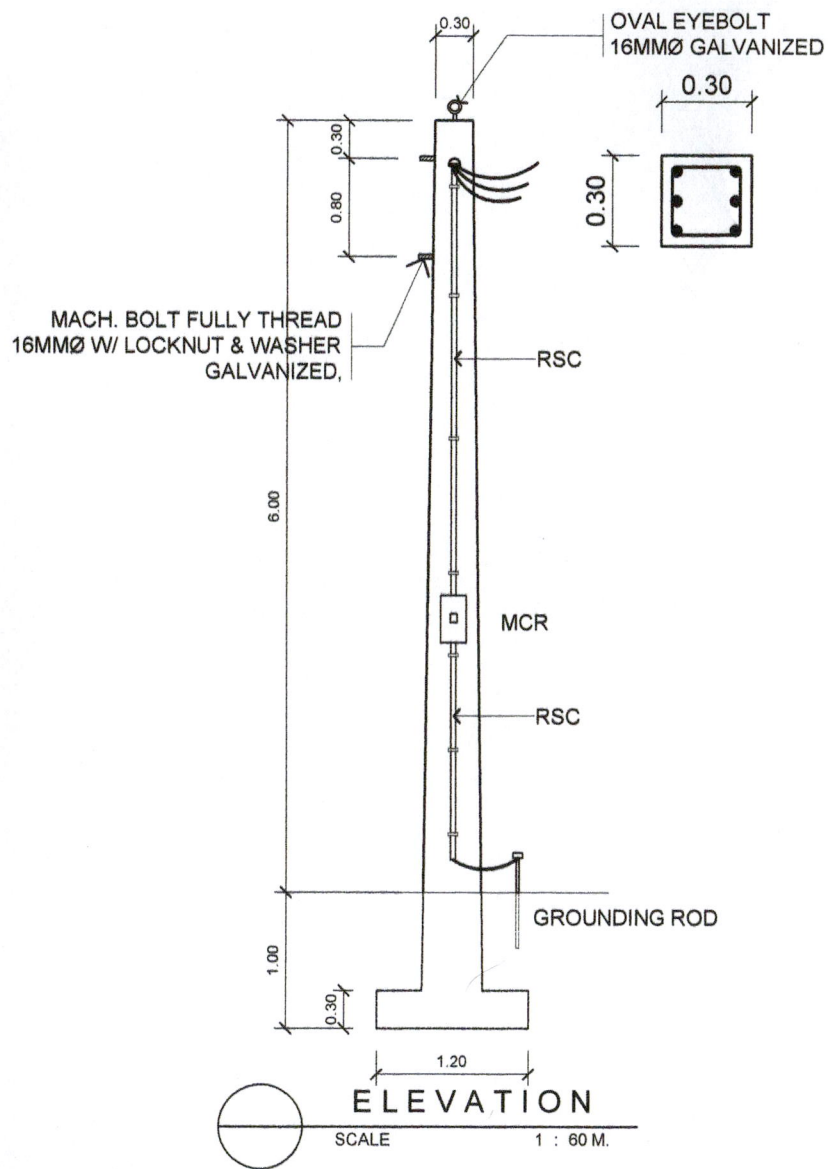


LEGEND AND SYMBOLS :	
	PRIMARY CONCRETE POLE
	SECONDARY CONCRETE POLE
	SERVICE ENTRANCE PEDESTAL WITH DISCONNECTING SWITCH
	LOAD SIDE SECONDARY WIRE 3 LINE WIRE + GROUND WIRE (OVER HEAD LINE)
	EXISTING 3-13.2kV PRIMARY LINE
	PANEL BOARD
	DISTRIBUTION TRANSFORMER
	CONCRETE ENCASEMENT RACEWAY
	CABLE CHAMBER

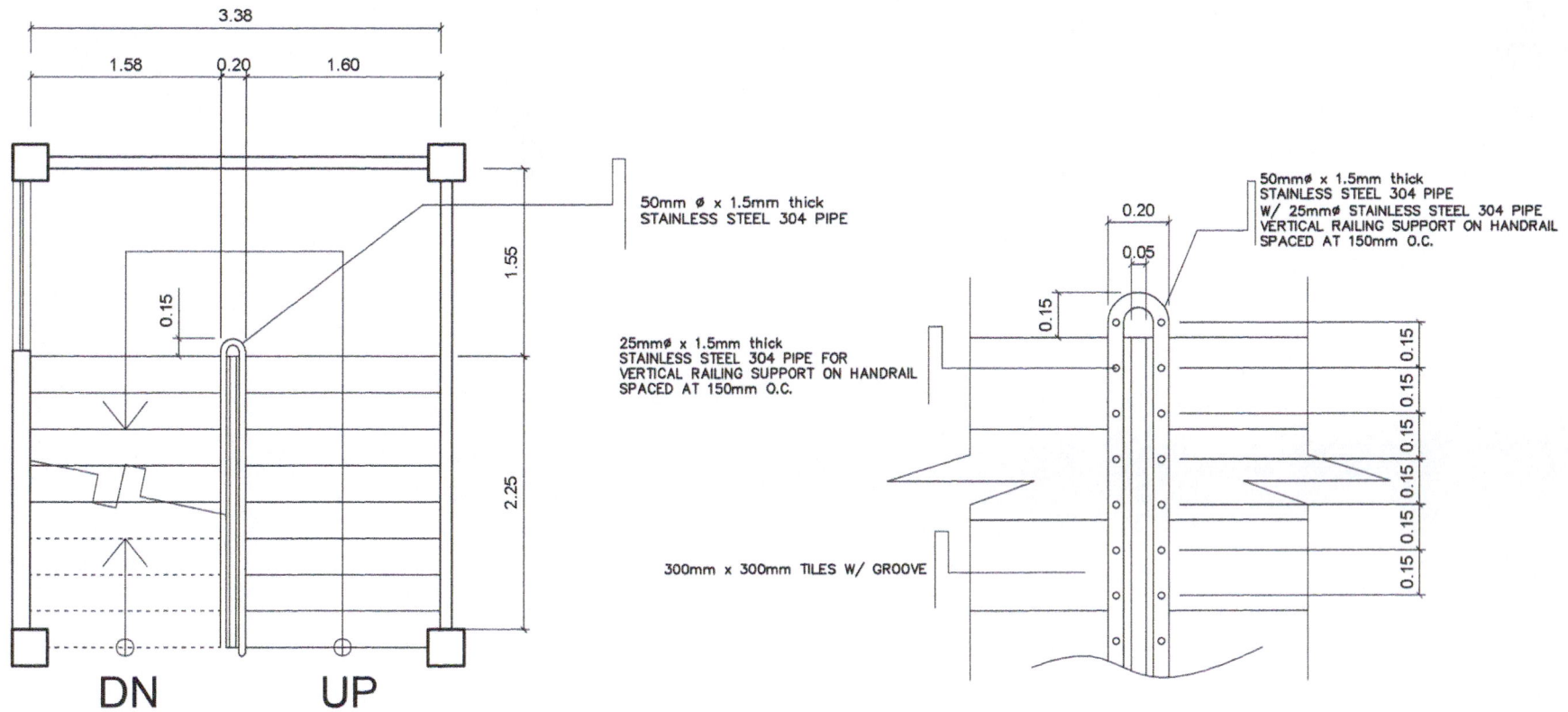
ENTRANCE POLE KEY DIAGRAM
SCALE 1:400 MTS

BID BULLETIN NUMBER 2
PROPOSED THREE STOREY MAIN BUILDING FOR NCRDEC



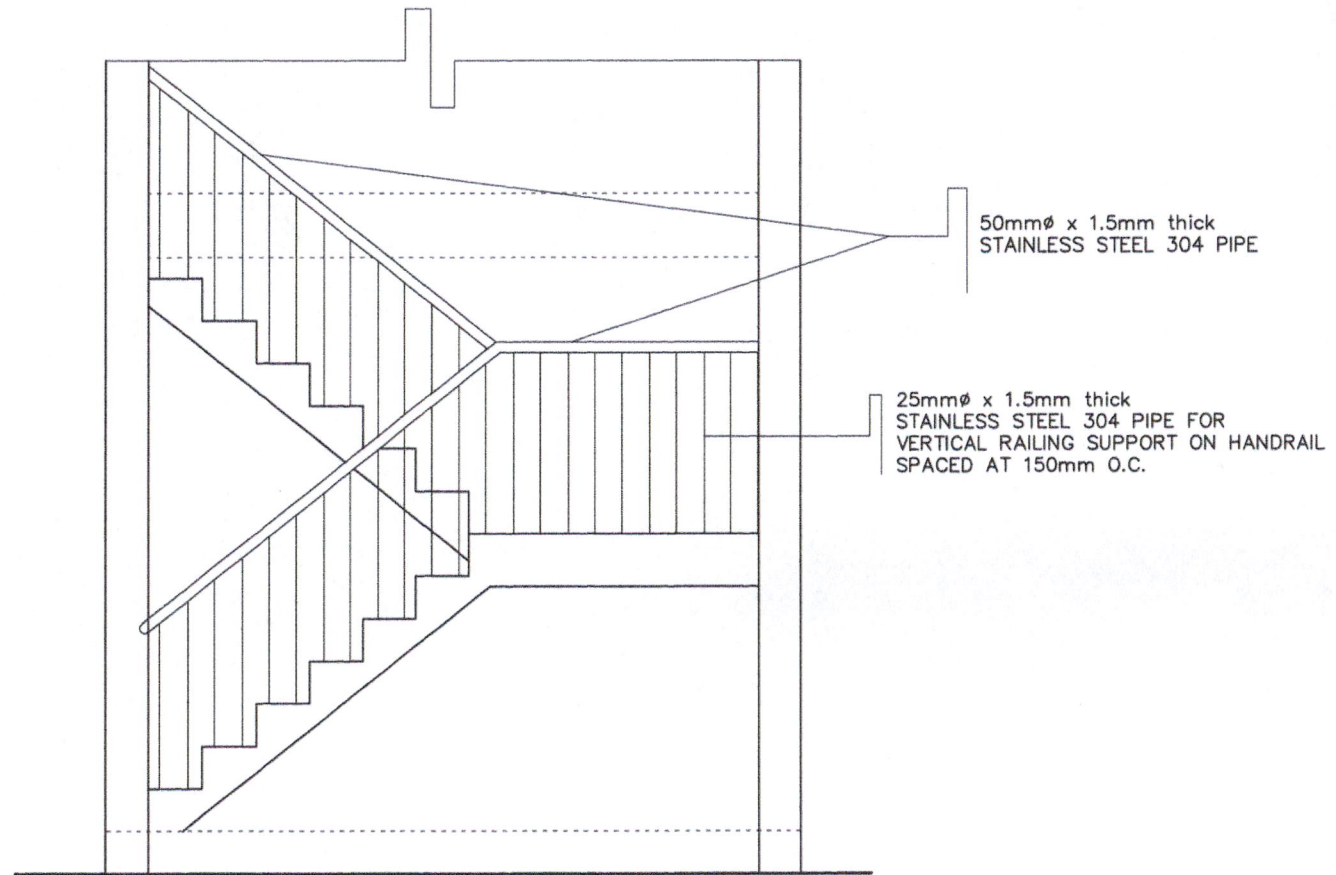
PROPOSED ELECTRICAL POST FOR NCRDEC MAIN BUILDING

BID BULLETIN NO. 2



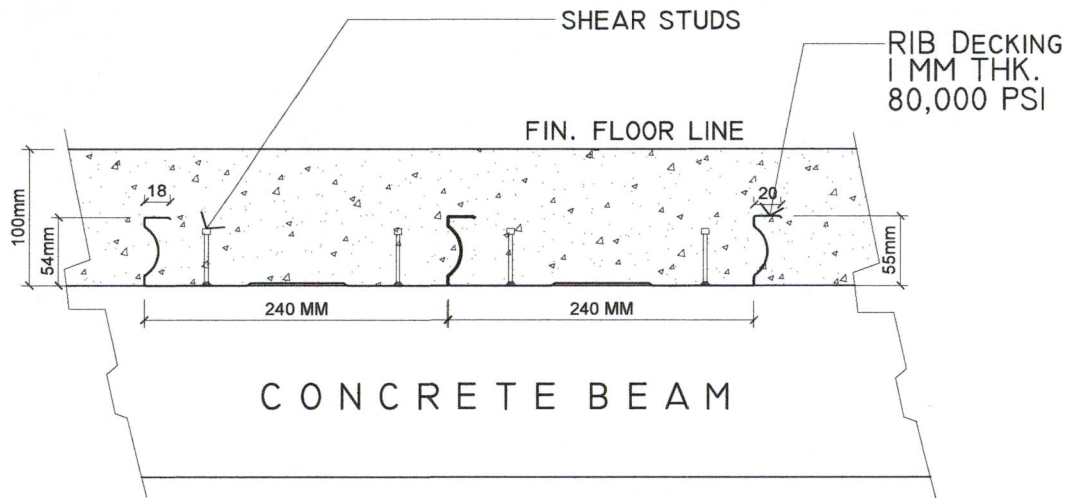
SPOT DETAIL OF RAILING

BID BULLETING NO. 02
PROPOSED THREE STOREY NCRDEC BUILDING

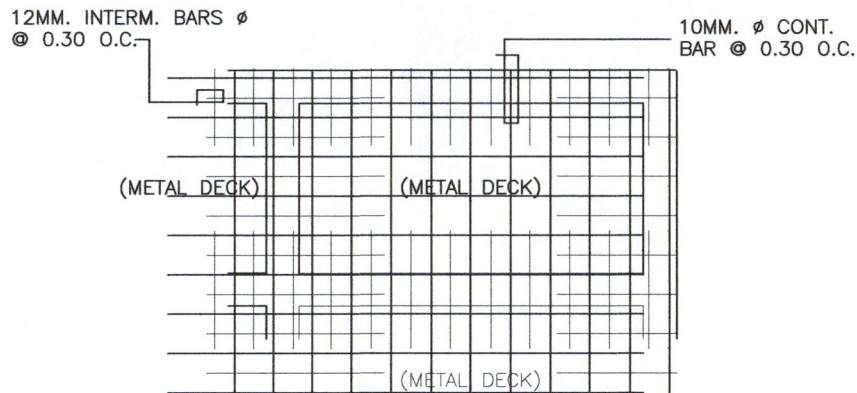


SPOT DETAIL OF RAILING

BID BULLETING NO. 02
PROPOSED THREE STOREY NCRDEC BUILDING



RIBDECKING SLAB DETAIL



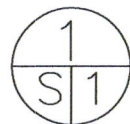
METAL DECK REINFORCEMENTS

TECHNICAL SPECIFICATION FOR RIBDECK

THICKNESS	SLAB THICKNESS	SPAN	SUPERIMPOSED LIVELOAD	REMARKS
0.80 MM	125 MM	4.0 M	7.30 KPA	FY = 550 MPa (80ksi) ASTM A446 Cold Rolled High-Tensile Grade Steel
0.8 MM	100 MM	3.5 M	6.20 KPA	FY = 550 MPa (80ksi) ASTM A446 Cold Rolled High-Tensile Grade Steel

MAXIMUM ALLOWABLE SUPERIMPOSED LOAD, KPa

THICKNESS t mm	SLAB thickness in mm	SPAN in meters								
		1.5	1.8	2	2.3	2.5	2.8	3	3.5	4
0.8	100	51.5	34.5	27.2	19.6	16	11.9	9.9	6.2	3.8
	125	80.3	54.3	43.1	31.5	25.9	19.7	16.6	11	7.3
	150	113.6	77.3	61.6	45.3	37.6	28.9	24.5	16.6	11.5
0.9	100	53.5	35.9	28.4	20.5	16.7	12.5	10.4	6.6	4.1
	125	86.3	54.7	45	32.9	27.1	20.7	17.4	11.6	7.8
	150	121	82.5	65.8	48.5	40.2	31	26.3	18	12.5
1.0	100	55.4	37.3	29.4	21.3	17.4	13	10.8	6.9	4.3
	125	86.7	58.8	46.7	34.2	28.2	21.6	18.2	12.1	8.2
	150	123	83.8	66.9	49.3	40.9	31.6	26.8	18.3	12.8
1.2	100	57.1	38.4	30.4	22	18	13.5	11.2	7.2	4.6
	125	89.5	60.7	48.3	35.4	29.2	22.4	18.9	12.6	8.6
	150	127	86.6	69.1	51	42.4	32.7	27.8	19	13.4
1.4	100	58.7	39.5	31.3	22.6	18.5	14	11.6	7.5	4.8
	125	92	62.5	49.7	36.5	30.1	23.1	19.5	13.1	8.9
	150	130.8	89.2	71.3	52.6	43.7	33.8	28.8	19.7	13.9



SCALE

DETAILS OF METAL DECKING

N.T.S.

BID BULLETIN NO. 02
PROPOSED THREE STOREY NCRDEC MAIN BUILDING