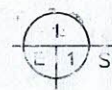
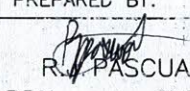
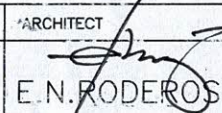
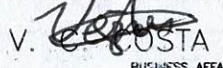
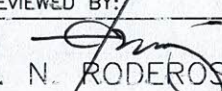
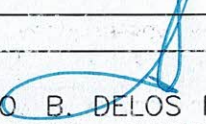
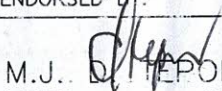
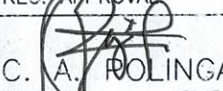
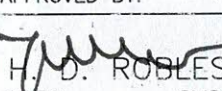
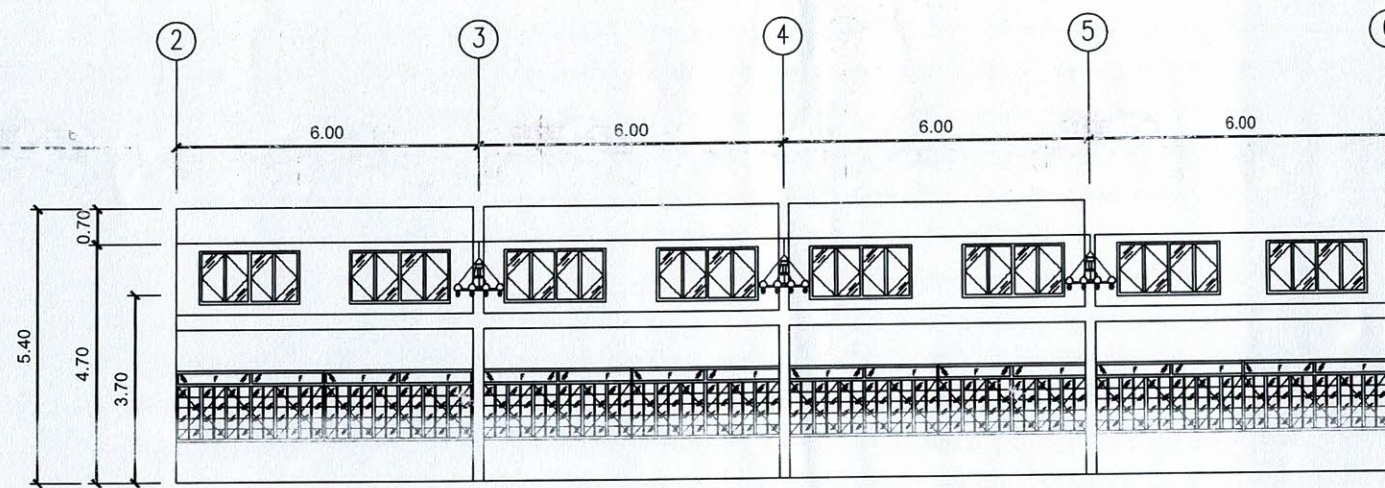
 **AREA OF CEILING TO BE REMOVE AND REPLACED**



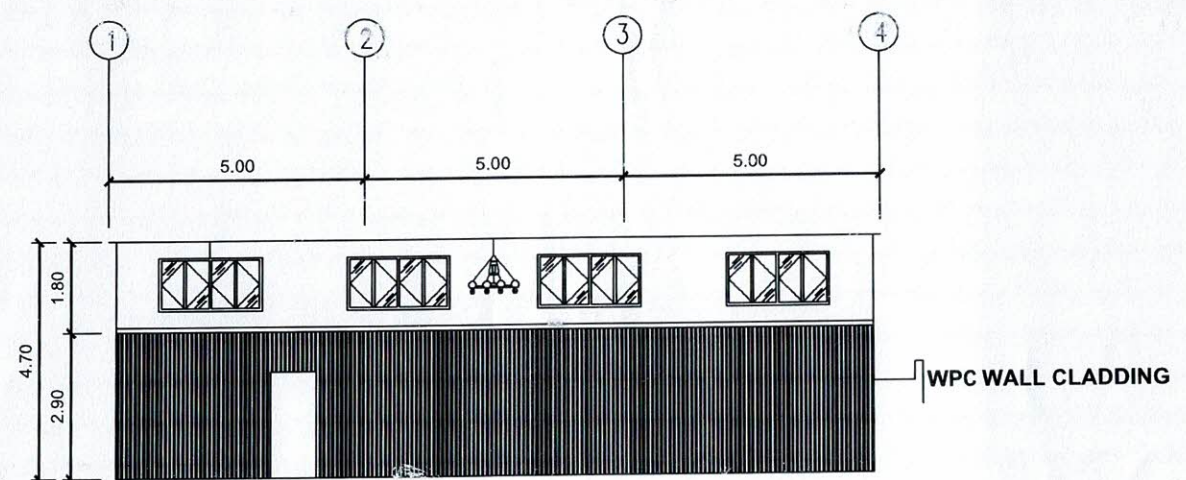
GROUND FLOOR PLAN

SCALE: 1:100 MTS

PREPARED BY:	ARCHITECT	END USER:	REVIEWED BY:	ENDORSED BY:	REC. APPROVAL:	APPROVED BY:	PROJECT TITLE/ LOCATION:	IMPLEMENTING AGENCY:	SHT NO:
 R. PASCUAL PPU	 E. N. RODEROS PPU	 V. COSTA BUSINESS AFFAIRS & RESOURCE GENERATION DIRECTOR	 E. N. RODEROS PPU	 O. B. DELOS REYES DIRECTOR PLANNING OFFICE	 M. J. TEOPORA VPPD	 C. A. POLINGA VPASS	 H. D. ROBLES PRES	REPAIR AND IMPROVEMENT OF ROLLE HALL CAVITE STATE UNIVERSITY MAIN CAMPUS	CAVITE STATE UNIVERSITY A - 1

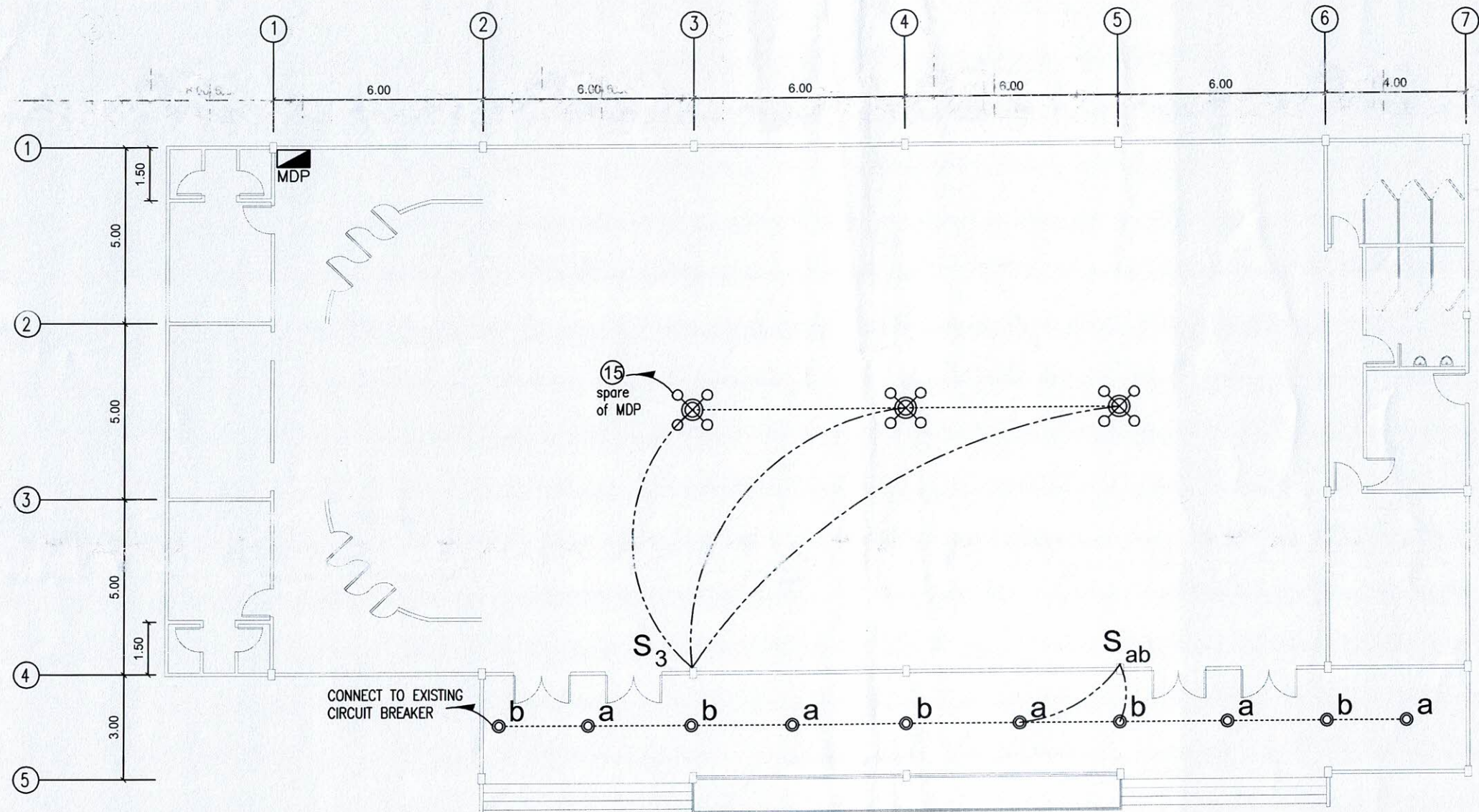


SECTION Y WITH CHANDELIER
 SCALE: 1:100 MTS



SECTION X WITH CHANDELIER
 SCALE: 1:100 MTS

	PREPARED BY:	ARCHITECT	END USER:	REVIEWED BY:	ENDORSED BY:	REC. APPROVAL:	APPROVED BY:	PROJECT TITLE/ LOCATION:	IMPLEMENTING AGENCY:	SHT NO:
	 R. PASCUAL PPU OVPPD	 E.N. RODEROS PPU OVPPD	 V. C. COSTA DIRECTOR BUSINESS AFFAIRS & RESOURCE GENERATION	 E. N. RODEROS PPU OVPPD	 O. B. DELOS REYES DIRECTOR PLANNING OFFICE	 M.J. D. TIPORA VPPD CVSU	 C. A. POLINGA VPASS CVSU	 H. D. ROBLES PRES CVSU	REPAIR AND IMPROVEMENT OF ROLLE HALL CAVITE STATE UNIVERSITY MAIN CAMPUS	CAVITE STATE UNIVERSITY



1
E 1
LIGHTING PLAN LAYOUT
 SCALE: 1:100 MTS

	PREPARED BY: R.J. R. SANCHEZ PPU	PROP. ELECTRICAL ENGR. R. P. PENA OVPPD	END USER: V. E. COSTA DIRECTOR BUSINESS AFFAIRS & RESOURCE GENERATION	REVIEWED BY: E. N. RODEROS PPU	ENDORSED BY: O. B. DELOS REYES DIRECTOR PLANNING OFFICE	REC. APPROVAL: M.J. D. DEFORA VPPD CVSU	APPROVED BY: C. A. POLINGA VPAS CVSU	APPROVED BY: H. D. ROBLES PRES CVSU	PROJECT TITLE/ LOCATION: REPAIR AND IMPROVEMENT OF ROLLE HALL CAVITE STATE UNIVERSITY MAIN CAMPUS	IMPLEMENTING AGENCY: CAVITE STATE UNIVERSITY	SHT NO: E - 1
--	--	---	--	--------------------------------------	--	--	---	--	---	---	------------------

GENERAL NOTES AND SPECIFICATIONS:

- ALL WORK HEREIN SHALL BE DONE IN ACCORDANCE WITH THE PLANS AND SPECIFICATIONS.
- ELECTRICAL WORKS SHALL BE IN ACCORDANCE WITH THE LATEST EDITION OF THE PHILIPPINE ELECTRICAL CODE, MUNICIPAL/CITY LAWS AND ORDINANCES AND THE REGULATIONS OF THE LOCAL POWER AND TELEPHONE COMPANY.
- THE JOB SHALL BE EXECUTED IN THE MOST THOROUGH, PROMPT AND WORKMANLIKE MANNER EMPLOYING STANDARD TOOLS, EQUIPMENT, METHODS AND GOOD ENGINEERING PRACTICE. THE JOB SHALL BE DONE IN ALL ASPECTS AS REQUIRED PER PLANS AND SPECIFICATIONS AND READY FOR OPERATION.
- THERE SHALL BE ONLY ONE SERVICE DROP IN A BUILDING WITH 230 VOLTS, 2 WIRE (LINE) PLUS 1 WIRE (GROUND), SINGLE PHASE, 60 CYCLE.
- THE DRAWINGS AND SPECIFICATIONS ARE INTENDED TO PERSENT A GENERAL LAYOUT AND BROAD OUTLINE/DESCRIPTION OF THE PROJECT, BUT DO NOT NECESSARILY INDICATE OR DESCRIBE ACTUAL LOCATIONS, LEVELS AND DISTANCES OF THE EQUIPMENT. THE CONTRACTOR IS HEREBY REQUIRED TO MAKE SUCH ADJUSTMENTS AT THE JOBSITE THAT ARE GOVERNED BY ACTUAL FIELD CONDITION.
- SERVICE VOLTAGE TO THE BUILDING FROM THE POWER SOURCE SHALL BE 230V.
- SERVICE ENTRANCE WIRING SHALL BE RIGID STEEL CONDUIT (RSC).
- FEEDER WIRING SHALL BE ELECTRICAL METALLIC TUBING (EMT).
- BRANCH CIRCUIT WIRING ELECTRICAL METALLIC TUBING (EMT).
- BRANCH CIRCUIT WIRING EMBEDDED IN CONCRETE SHALL BE IN PVC PIPE WITH ADEQUATE GROUND WIRE FOR EQUIPMENT GROUNDING.
- LIGHT SWITCHES SHALL BE 15A, 230VAC.
- ALL MATERIALS SHALL BE BRAND NEW AND OF APPROVED TYPE FOR LOCATION AND PURPOSE INTENDED.
- DEVICES, FIXTURES LOCATED OUTDOOR SHALL BE WEATHERPROOF TYPE.
- MOUNTING HEIGHTS ARE:

- | | |
|------------------------|--------------------------|
| A. LIGHT SWITCHES | 1.40M ABOVE FLOOR FINISH |
| B. CONVENIENCE OUTLETS | 0.30M ABOVE FLOOR FINISH |
| C. C.O. COUNTER TOP | 0.30M ABOVE THE COUNTER |
| D. TELEPHONE OUTLETS | 0.30M ABOVE FLOOR FINISH |
| E. PANEL BOARD | 1.50M ABOVE FLOOR FINISH |
| F. EMERGENCY LIGHT | 0.30M BELOW CEILING LINE |

- ANY DESCRIPANCY BETWEEN THE PLANS AND SPACIFICATIONS SHALL BE BROUGHT TO THE ATTENTION OF THE ENGINEER FOR CLARIFICATION OR DECISION.
- THE ENTIRE WORK SHALL BE DONE UNDER THE DIRECT SUPERVISION OF DULY REGISTERED ELECTRICAL ENGINEER.
- REFER TO SHEET E-1 FOR EXACT NUMBER AND LOCATION OF DEVICES/EQUIPMENT FOR ELECTRICAL SYSTEM. ANY CONFLICT ON QUANTITY AND/OR LAYOUT MUST BE VERIFIED AND CONFIRMED TO DESIGNER/CONSULTANT.
- REFER TO LOAD SCHEDULE FOR THE RATING OF INDIVIDUAL ENCL, ACB'S IN NEMA-3R.
- ALL ELECTRICAL CONDUITS AND TELEPHONE SERVICE ENTRANCE THAT INSTALLED BELOW THE GROUND SHALL BE IN CONCRETE ENCASUREMENT.
- ANY DEVICES OR EQUIPMENT NOT REFLECTED OR SHOWN ON PLANS BUT REQUIRED TO COMPLETE THE SYSTEM MUST BE INCLUDED ON SCOPE OF WORK.
- REQUEST FOR TEMPORARY POWER INTERRUPTION SHOULD BE COORDINATED TO OWNER'S REPRESENTATIVE OR DESIGNER.

LEGEND AND SYMBOLS:

	CHANDELIER TYPE LIGHTING, 100W-200W		ACU CONDENSER OUT DOOR UNIT WITH NEMA 3R CIRCUIT BREAKER
	LED PIN LIGHT, 12W 6" RECESSED TYPE, DOWNLIGHT, CEILING MOUNTED		ACU WALL/FLOOR MOUNTED, SPLIT TYPE, INDOOR UNIT
	1-9W LIGHT TUBE, T5 w/ FIXTURES 2 FT. LENGTH (FL)		2.0 mm ² THHN
	2-9W LIGHT TUBE, T5 w/ FIXTURES 2 FT. LENGTH (FL)		3.5 mm ² THHN
	1-18W LIGHT TUBE, T8 w/ FIXTURES 4 FT. LENGTH (FL)		CIRCUIT HOMERUN
	2-18W LIGHT TUBE, T8 w/ FIXTURES 4 FT. LENGTH (FL)		CIRCUIT NUMBER
	EMERGENCY LIGHT (EL)		PANEL BOARD
	CEILING FAN SWITCH		SERVICE ENTRANCE
	ONE GANG SWITCH		KILOWATT HOUR METER
	TWO GANG SWITCH		CONCRETE ENCASEMENT
	THREE GANG SWITCH		CABLE CHAMBER
	THREE WAY SWITCH		DISTRIBUTION TRANSFORMER
	CEILING FAN OUTLET		PRIMARY CONCRETE POLE
	TWO GANG CONVENIENCE OUTLET		SERVICE ENTRANCE PEDESTAL WITH DISCONNECTING SWITCH
	THREE PIN ACU OUTLET		TRUSS/DOWN GUY SUPPORT
	ACU WINDOW TYPE		PRIMARY LINE

PINLIGHT SPECIFICATION:

VOLTAGE RATING	LAMP POWER	LAMP SIZE	CONTROL MODE	APPLICATION	LIFESPAN	DESIGN STYLE	COLOR
230 V	12W	SMALL 5"-9"	SWITCH CONTROL	HALL WAY	≥ 150,000 HOURS	RECESSED DOWNLIGHT CEILING MOUNTED	DAY LIGHT

CHANDELIER SPECIFICATION:

VOLTAGE RATING	LAMP POWER	LAMP SIZE	CONTROL MODE	APPLICATION	LIFESPAN	DESIGN STYLE	COLOR
230 V	100W-200W	LARGE	SWITCH CONTROL W/ SUPPORT DIMMER	EVENT HALL	≥ 50,000 HOURS	DECORATIVE PENDANT LIGHT	WARM LIGHT

SCHEDULE OF LOADS:

CIRCUIT NO.	DESCRIPTION	NO. OF OUTLET	VA RATING	V	AB AMPS	CB BOLT-ON	SIZE OF WIRE THHN-CU/ THW-CU (G)	SIZE OF CONDUIT	COLOR CODE
2165	LIGHTING OUTLET	3	600	230	2.61	BOAT	2-3.5 mm ²	20 mm. 9 PVC	1R,1B

	PREPARED BY: R.J. R. SANCHEZ PPU	PROF. ELECTRICAL ENGR. R. P. PENA OVPPD	END USER: J. COSTA DIRECTOR - BUSINESS AFFAIRS & RESOURCE GENERATION	REVIEWED BY: E. N. RODEROS PPU	ENDORSED BY: O. B. DELOS REYES OVPPD DIRECTOR - PLANNING OFFICE	REC. APPROVAL: M.J. D. TEPIORA CVSU	APPROVED BY: C. A. POLINGA VPASS - CVSU	APPROVED BY: H.V.D. ROBLES PRES. - CVSU	PROJECT TITLE/ LOCATION: REPAIR AND IMPROVEMENT OF ROLLE HALL CAVITE STATE UNIVERSITY MAIN CAMPUS	IMPLEMENTING AGENCY: CAVITE STATE UNIVERSITY	SHT NO: E - 2
--	--	---	--	--------------------------------------	---	---	---	---	---	---	------------------