



Republic of the Philippines
CAVITE STATE UNIVERSITY
 (CvSU)
 DON SEVERINO DE LAS ALAS CAMPUS
 Indang, Cavite
 ☎ (046) 415-0010 / • (046) 415-0011
www.cvsu.edu.ph

COLLEGE OF NURSING

**SUPPLY, DELIVERY AND INSTALLATION OF ACCESSORIES FOR
 MATERNAL AND NEONATAL BIRTHING SIMULATOR FOR CON**

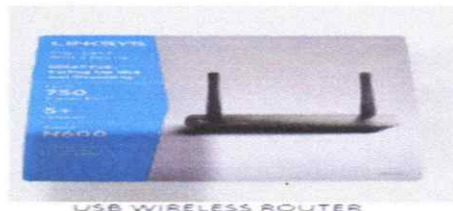
Total: ₱2,069,256.00

Item No.	Qty	Unit	Specifications	Unit Price (Php)	Total Price (Php)
1	1	set	<p>Maternal and Neonatal Birthing Simulator Accessories</p> <ul style="list-style-type: none"> TABLET PC Includes touchscreen tablet PC preloaded with software (software is preinstalled on the wireless tablet PC included with Labor and Delivery Patient Simulator. This lightweight tablet allows you to effortlessly control Labor and Delivery Patient Simulator by the bedside, from a control center, or anywhere else up to 300 feet away. Weight: 1.73 lb (784g) Display Screen: 12.3", 10-point multi-touch Resolution 2736x184 Aspect Ratio: 3:2 Processor: 11th Gen Core i7-1165G7 quad-core CPU Memory: 32GB LPDDR4 RAM Storage: 256GB Operating System: Windows 10 Pro or higher Integrated graphics VIRTUAL PATIENT MONITOR Processor: 12th Gen, i5-12500 (18 MB cache, 6 cores, 12 threads, 3.00 GHz to 4.60 GHz Turbo, 65 W) Operating System: Windows 11 Pro Licensed Memory : 8 GB, 1 x 8 GB, DDR4 Storage: 256 GB, M.2 2230, PCIe NVMe, SSD Dimensions & Weight Height (front) : 13.54 in. (344.00 mm) Height (rear) : 13.54 in. (344.00 mm) Width : 21.26 in. (540.20 mm) Depth : 2.07 in. (52.60 mm) 	₱2,069,256.00	₱2,069,256.00

Weight (minimum) : 13.34 lbs. (6.05 Kg)-
without stand
Weight (maximum) : 14.73 lbs. (6.68 Kg)-
without stand*



- Simulator Control Software with Lifetime License
 - ✓ Labor and delivery control screen with intuitive interface and options
 - ✓ Patient and fetal monitor
 - ✓ Active 3D patient animation
 - ✓ Scenario editor and player
 - ✓ Laboratory report generator
 - ✓ Activity log
 - ✓ Comprehensive library of more than 45 preprogrammed labor and delivery scenarios
 - ✓ Includes preprogrammed scenarios like Amniotic Fluid Embolism, Breech Vaginal Delivery, Magnesium Toxicity, Normal Vaginal Delivery, Placental Abruption, Postpartum Hemorrhage, Preeclampsia, Prolapsed Cord, Shoulder Dystocia
 - ✓ Automatic Mode control license
 - ✓ Streaming voice headset
 - ✓ Touchscreen vital signs monitor
- RF communications module
- USB wireless router
 - ✓ Wi-Fi 6: 802.11ax
 - ✓ Bluetooth Wireless 5.0 technology
 - ✓ LTE Advanced with removable SIM and eSIM support
 - ✓ Qualcomm Snapdragon X20 LTE Modem
 - ✓ LTE bands supported: 1, 2, 3, 4, 5, 7, 8, 12, 13, 14, 19, 20, 25, 26, 28, 29, 30, 38, 39, 40,41, 66



Accessories

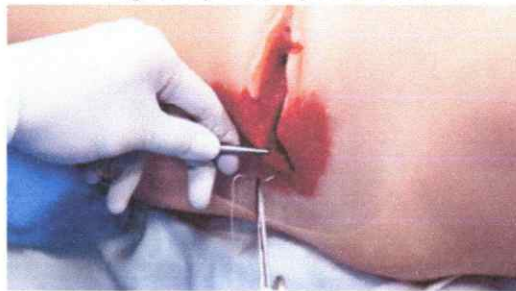
- Palpation abdominal cover
- Supports Leopold's Maneuvers and external cephalic version
- Contraction abdominal cover
- Postpartum abdominal cover



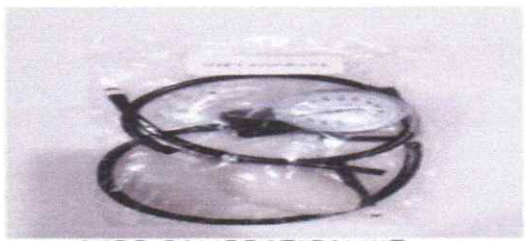
- 2 umbilical cords
- 2 precut umbilical cords
- Placenta



- Epidural insert
- Midline episiotomy suture trainer
- Mediolateral episiotomy suture trainer
- 4th-degree episiotomy suture trainer




- 2 suppositories
- Bladder, IV, and PPH filling kits

		<ul style="list-style-type: none"> • NIBP calibration kit  <p style="text-align: center;">NIBP CALIBRATION KIT</p> <ul style="list-style-type: none"> • Antecubital vein replacement set • Spare cervix and birth canal • 15 ft. RJ45 cable • 2 suppositories • Artificial blood concentrate • Mineral oil lubricant • Hospital gown, baby head cap, receiving blanket, and diaper. • Manual blood pressure cuff • Mother and baby battery chargers <p>Includes On site Training & installation User guide 1 year warranty on parts & Services</p>			
				Total	₱2,069,256.00

Prepared by:


EVELYN M. DEL MUNDO
 Dean, College of Nursing

Noted by:


ARLEEN C. PANALIGAN
 TWG Members. Lab equipment



LANI S. RODIS
 TWG Member, Laboratory Equipment


DINDO C. MARGES
 Member, BAC TWG -
 Computer and Office Equipment


EMELINE C. GUEVARRA
 Chair, BAC TWG-
 Computer and Office Equipment


MA. CORAZON V. HERRERA
 TWG Members. Lab equipment


RENE B. BETONIO
 TWG Chair., Laboratory Equipment


ANZLEY R. CRUSIS
 Member, BAC TWG -
 Computer and Office Equipment