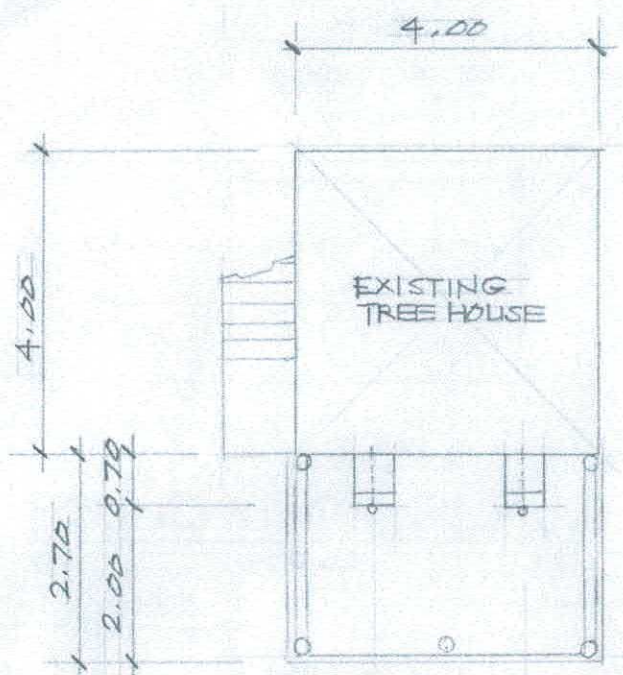
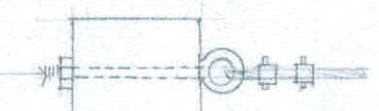


52

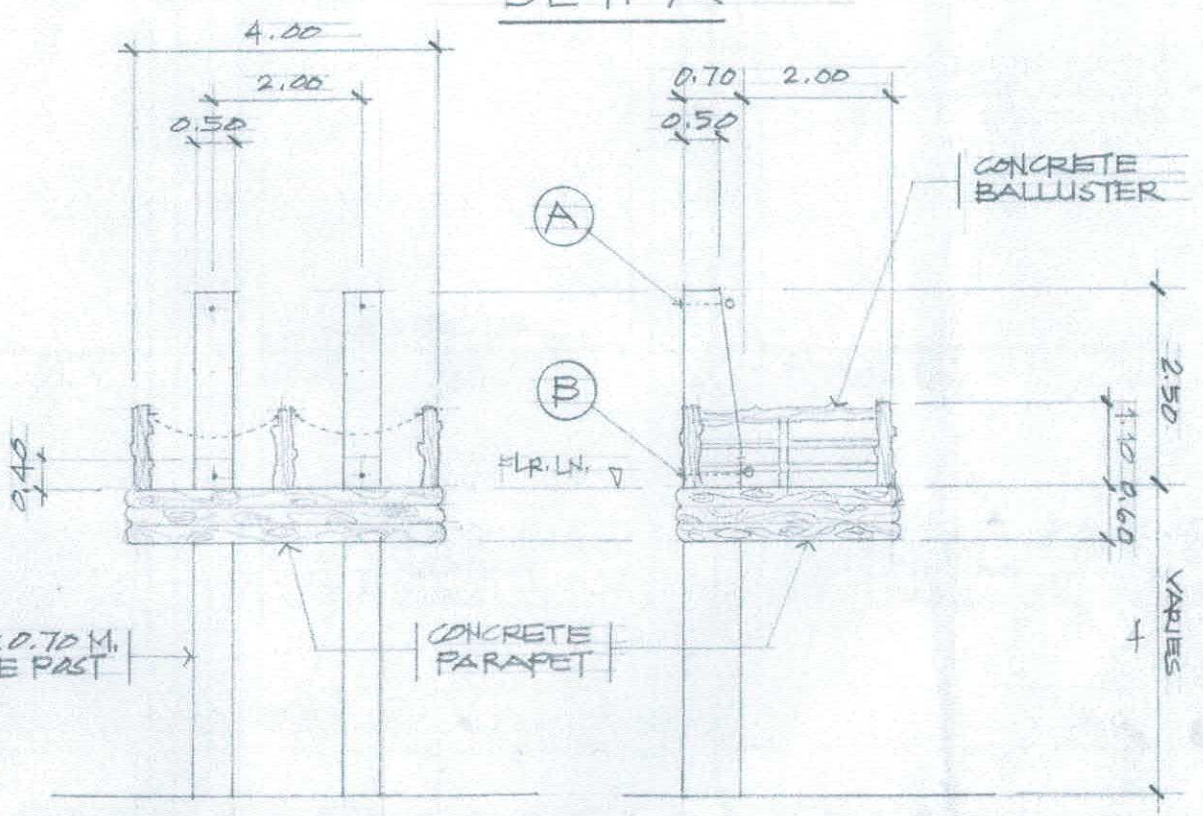


**PLAN**  
S: 1:100 M.

20MM Ø X 0.55M.  
LENGTH EYEBOLT  
W/ NUT & WASHER



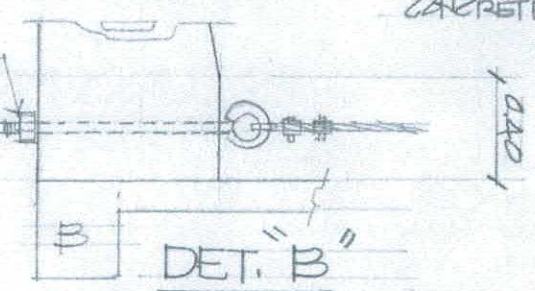
**DET. "A"**



**FRONT ELEV.**  
S: 1:100 M.

**TYP. SIDE ELEVATION**  
S: 1:100 M.

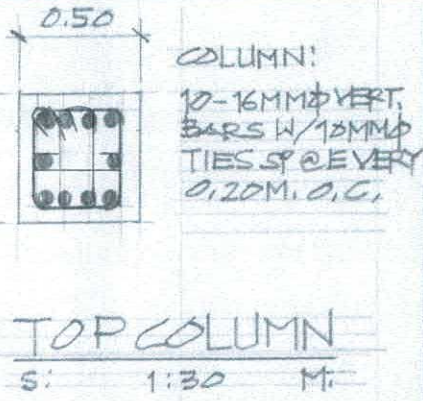
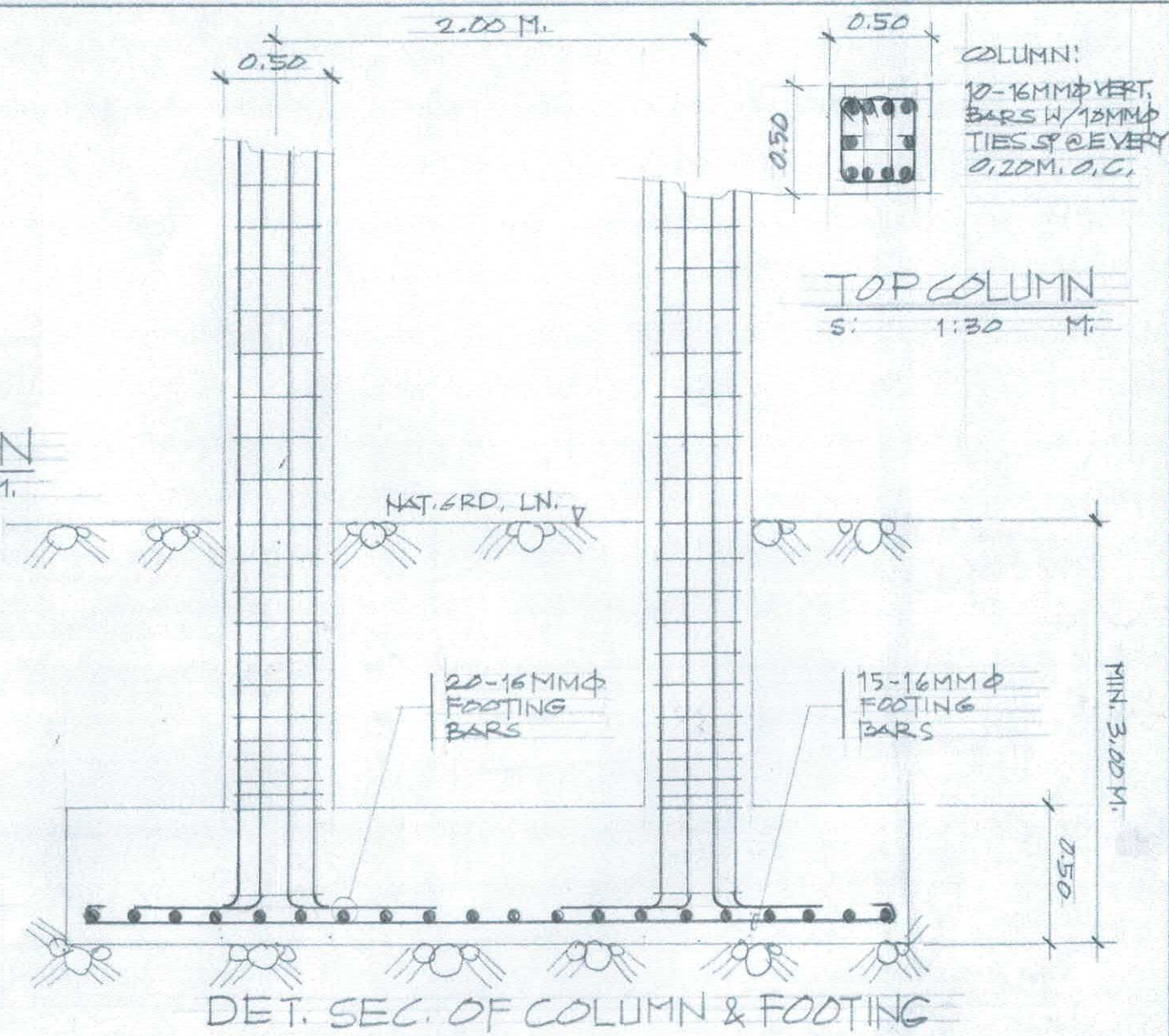
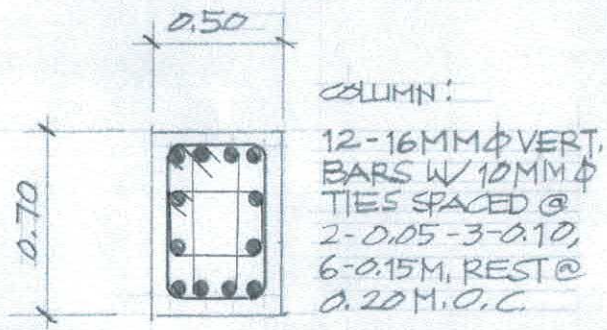
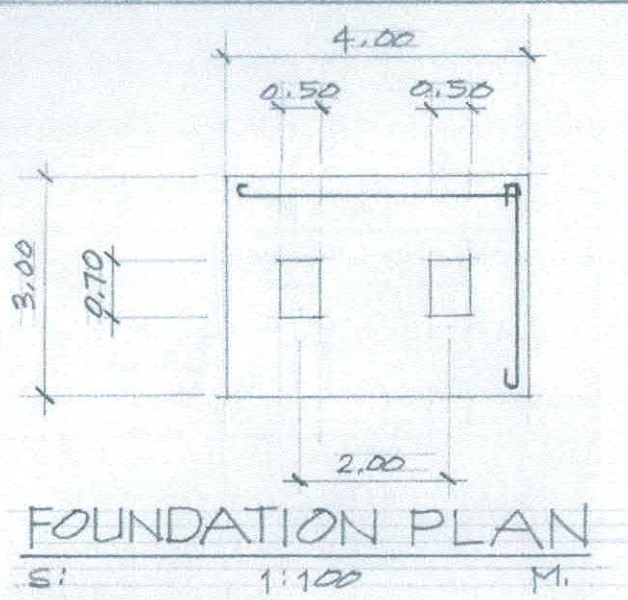
20MM Ø X  
0.75M. LENGTH  
EYEBOLT W/  
NUT & WASHER  
FLR. LN. y



0.50M. X 0.70 M.  
CONCRETE PAST

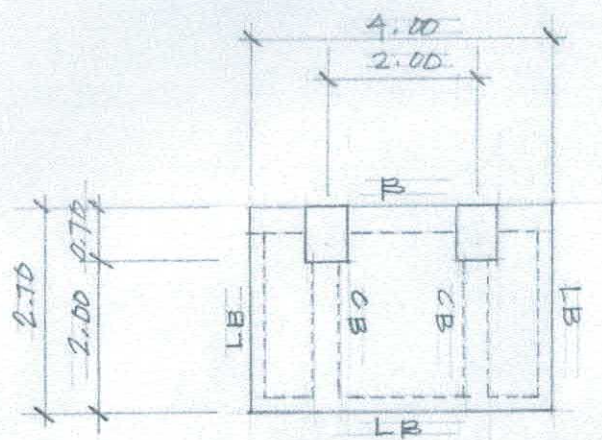
AGENCY	DRAWN BY:	END USER:	ENDORSED BY:	PROJECT TITLE:	REC. APPROVAL:	APPROVED BY:	SHT. NO.
G & SU	<i>Xm</i> A. L. LLAMADO STAFF, PRS	<i>Jmfayca</i> JM. M. TAYAG MANAGER, AGRI-ECO	<i>[Signature]</i> D. R. ESCOBAR DIR. PPS	CONSTRUCTION OF BICYCLE ZIPLINE STRUCTURE AT AGRI-ECO TOURISM FOREST PARK	<i>[Signature]</i>	<i>[Signature]</i> H. D. ROBLES PRESIDENT	1 4



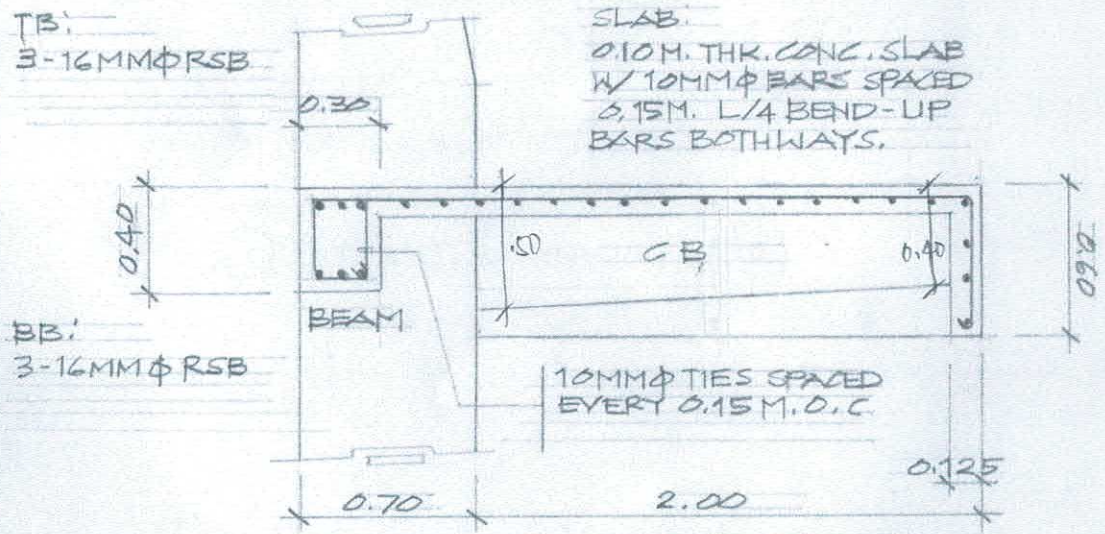


AGENCY	DRAWN BY:	END USER:	ENDORSED BY:	PROJECT TITLE:	REC. APPROVAL:	APPROVED BY:	SHT. NO.
CVSLU	<i>[Signature]</i> A. L. LUAMADO STAFF, PPS	<i>[Signature]</i> J. M. TAYAG MANAGER, AGR-ECO DIR.	<i>[Signature]</i> D. R. ESCANO PPS	CONSTRUCTION OF BIKE ZIPLINE STRUCTURE AT AGR-ECO TOURISM FOREST PARK		<i>[Signature]</i> H. D. ROBLES PRESIDENT	2 5 4

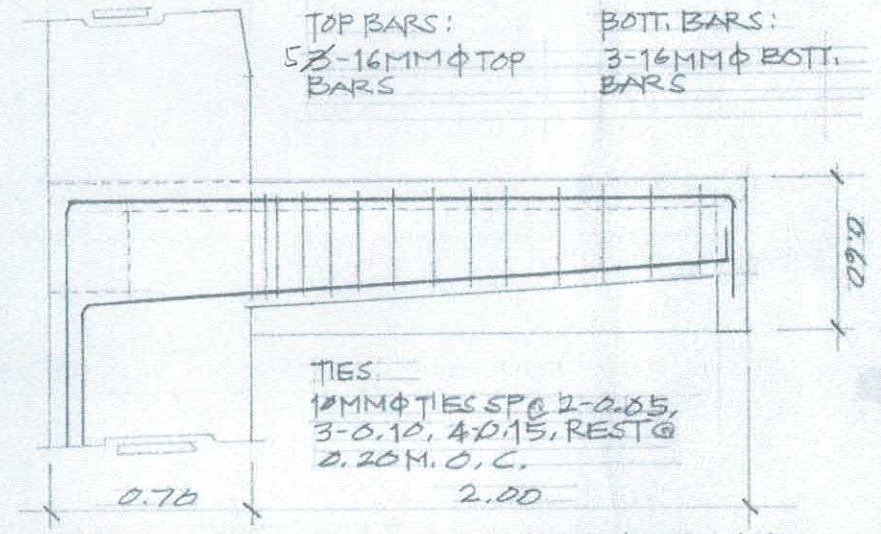




**BEAM PLAN**  
S: 1:100 M.



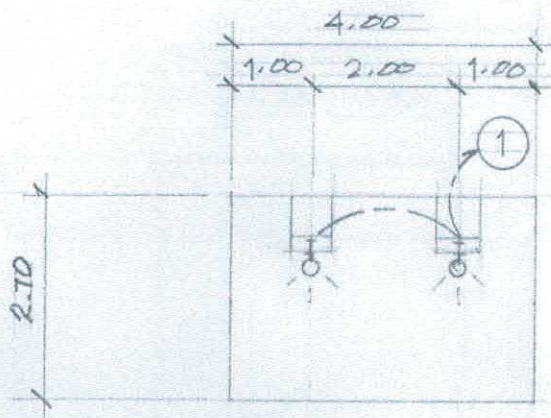
**DET. OF BEAM & SLAB**  
S: 1:30 M.



**DET. OF CANTILEVER BEAM**  
S: 1:30 M.

AGENCY	DRAWN BY:	END USER:	ENDORSED BY:	PROJECT TITLE:	REC. APPROVAL:	APPROVED BY:	SHT. NO.
C.V.S.U.	<i>Xm</i> A.L. LAMADO STAFF, PPS	<i>Jm Tayag</i> JM. M. TAYAG MANAGER, AGRÍ-ECO	<i>D.R. Escano</i> D.R. ESCAÑO DIR. PPS	CONSTRUCTION OF BICYCLE ZIPLINE STRUCTURE ATACRI-ECO TOURISM FOREST PARK		<i>Jm</i> H.D. ROBLES PRESIDENT	3 5 4






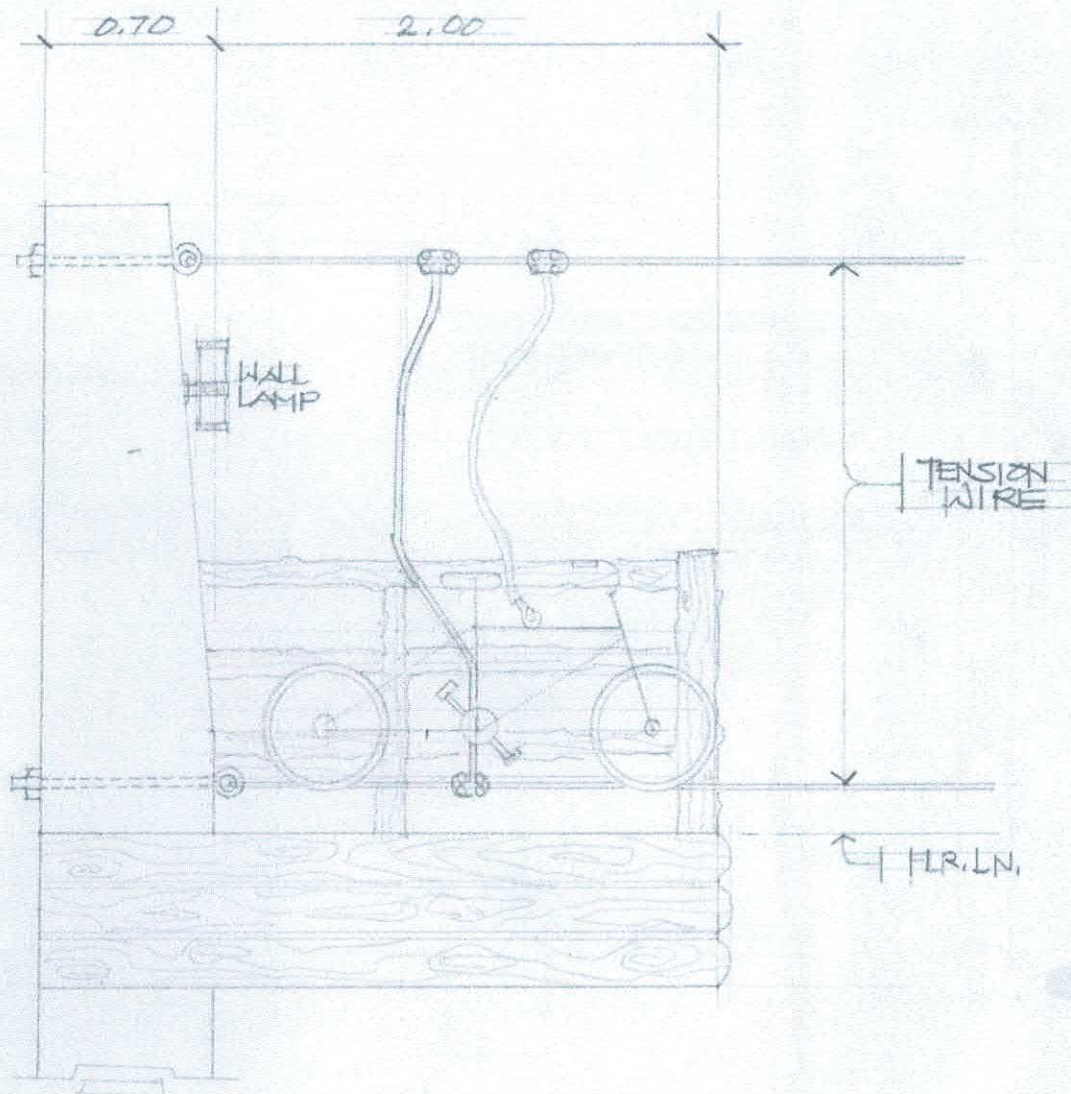


### LIGHTING LAYOUT

S: 1:100 M.

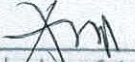

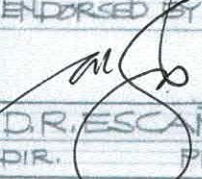

#### LEGEND:

-  WALL LAMP
-  LIGHTING LAYOUT
-  CIRCUIT HOMERUN

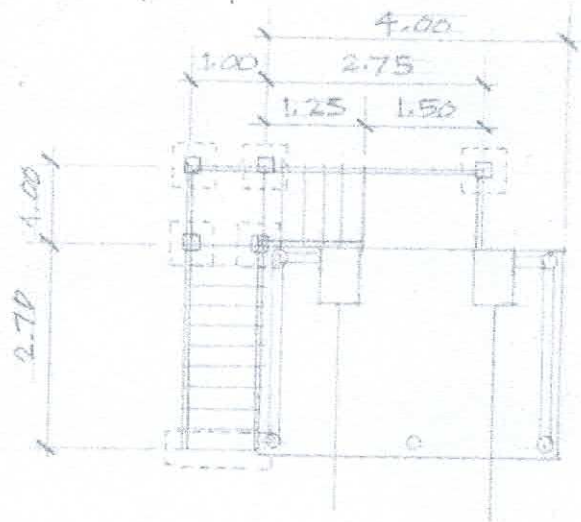


### SPOT DETAIL

S: 1:30 M.

AGENCY	DRAWN BY:	END USER:	ENDORSED BY:	PROJECT TITLE:	REC. APPROVAL:	APPROVED BY:	SHT. NO.
CvSU	 A.L. LLAMADO STAFF, FPS	 J.M. TAYAG MANAGER, ARI-ECO	 D.R. ESCANO DIR. FPS	CONSTRUCTION OF BICYCLE ZIPLINE STRUCTURE AT AGRICULTURE TOURISM FOREST PARK		 H.D. ROBLES PRESIDENT	4 4



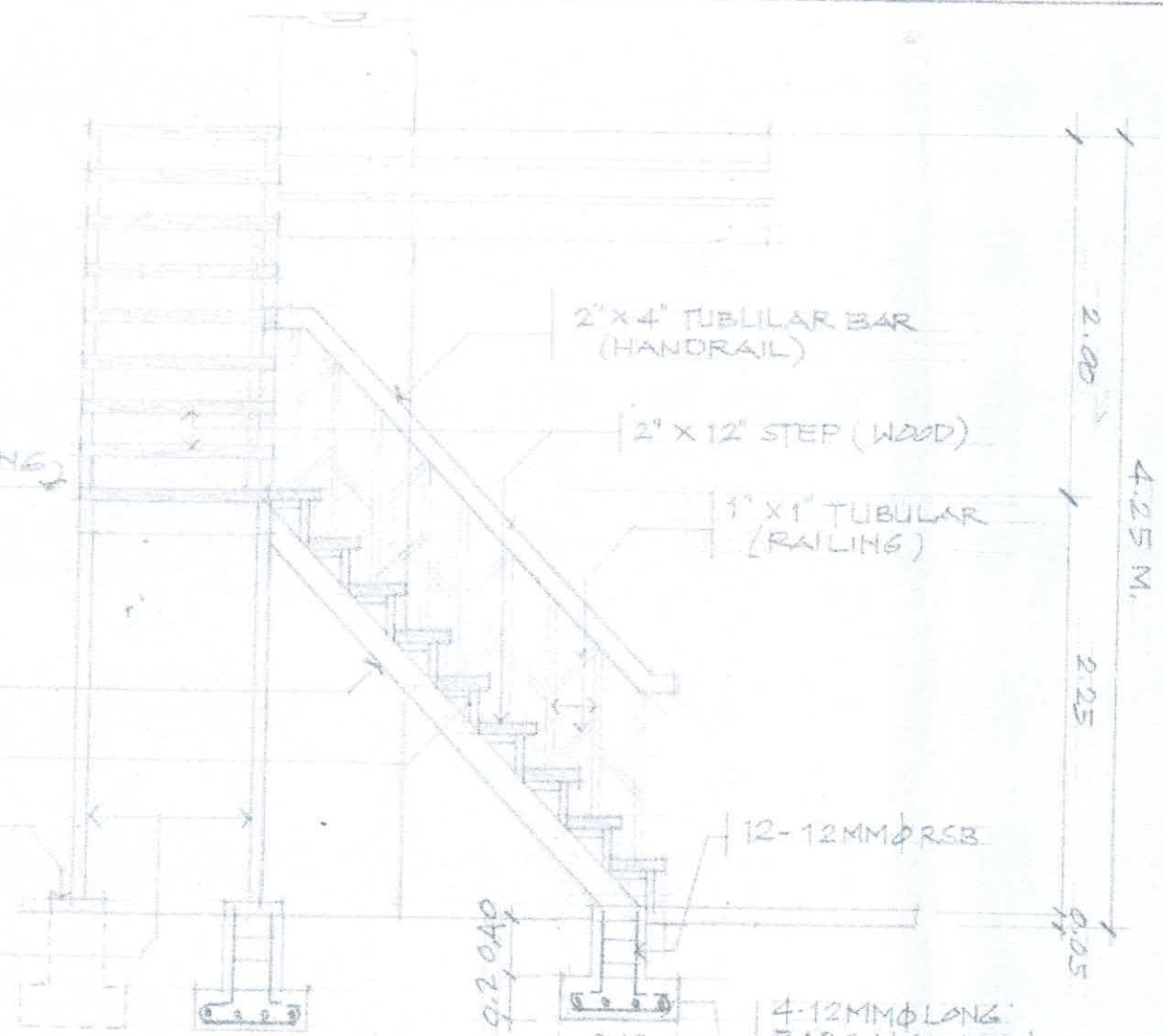


**STAIR PLAN**

SCALE: 1:100 M.

- 2" X 6" C-CHANNEL
- 2" X 2" X 1/4" ANGLE BAR
- CONC. PEDESTAL COLUMN
- 4" Ø 6.1. PIPE (POST)

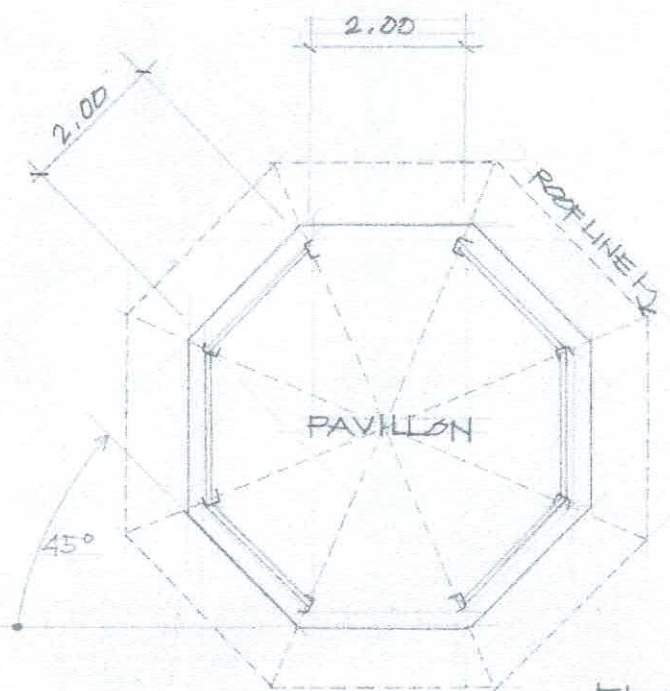
LANDING



**DETAIL OF STAIR**

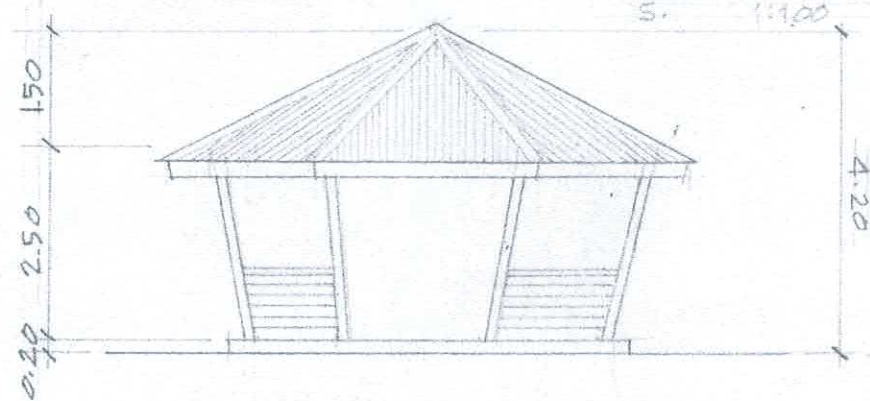
SCALE: 1:40 M.

AGENCY	DRAWN BY:	END USER:	ENDORS	PROJECT TITLE	REC. APPROVAL:	APPROVED BY:	SHT. NO
CvSU	<i>Am</i> ALLAMADO STAFF, PPS	<i>Jmfayao</i> J.M. MAYAG MANAGER, AGRI-ECO	<i>[Signature]</i> J.R. ESCANO DIR PPS	CONSTRUCTION OF BICYCLE ZIPLINE STRUCTURE AT AGRI-ECO TOURISM FOREST PARK		<i>[Signature]</i> H.V. ROBLES PRESIDENT	5 5



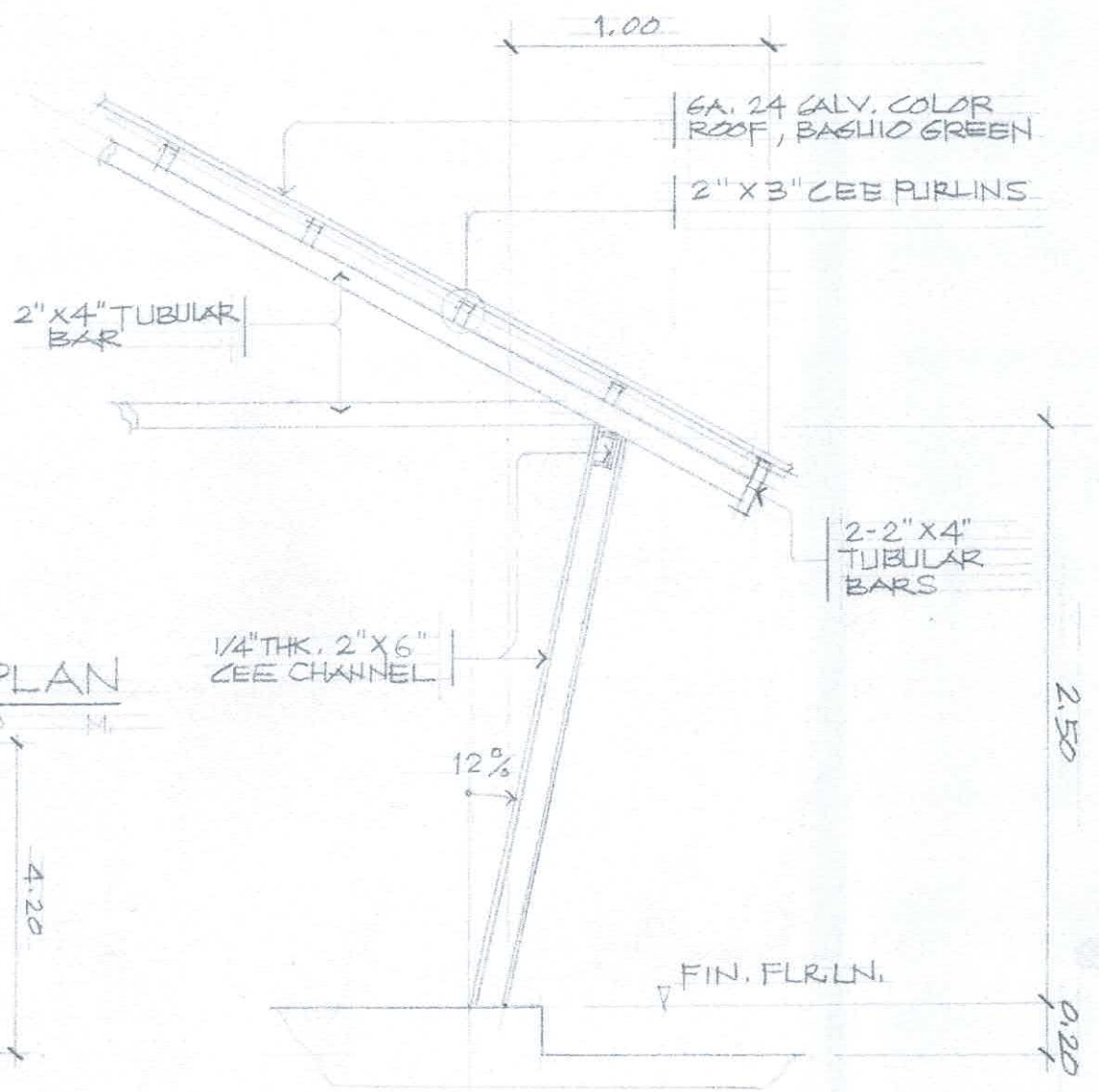
FLOOR PLAN

S. 1:100 M.



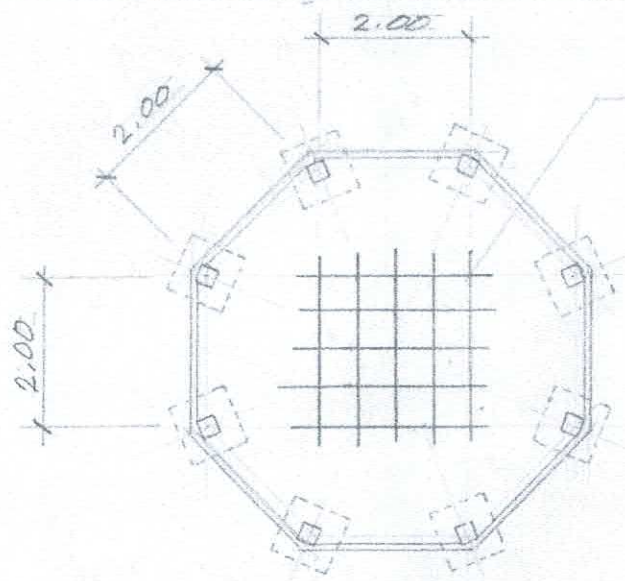
TYPICAL ELEVATION

S. 1:100 M.



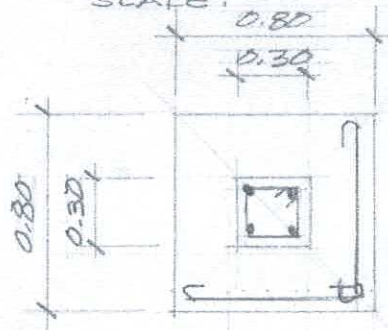
AGENCY	DRAWN BY:	END USER:	ENDORSED BY:	PROJECT TITLE:	APPROVED BY	SHT. NO.
Cv.SU	 A. LLAMADO STAFF, PPS	 JM. M. TAYAG MANAGER, AGR-ECO	 D.R. ESCANO DIR. PPS	CONSTRUCTION OF TWO-UNITS PAVILLON IN AGR-ECO TOURISM FOREST PARK	 H. D. ROBLES PRESIDENT	1 4





**FOUNDATION PLAN**

SCALE: 1:100 M.

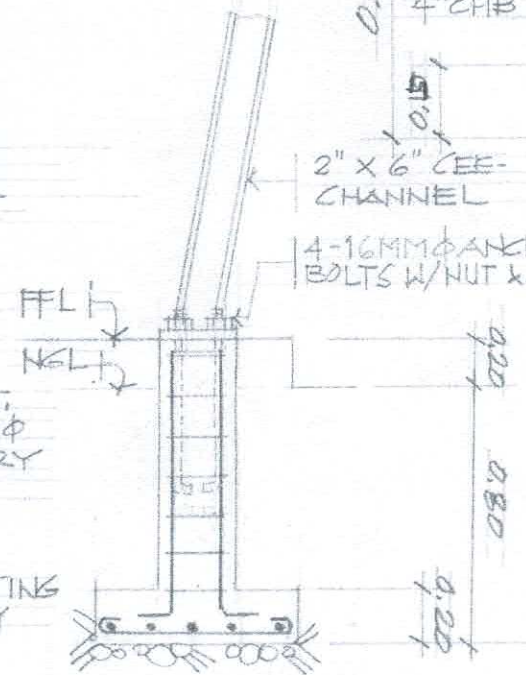


**PLAN**

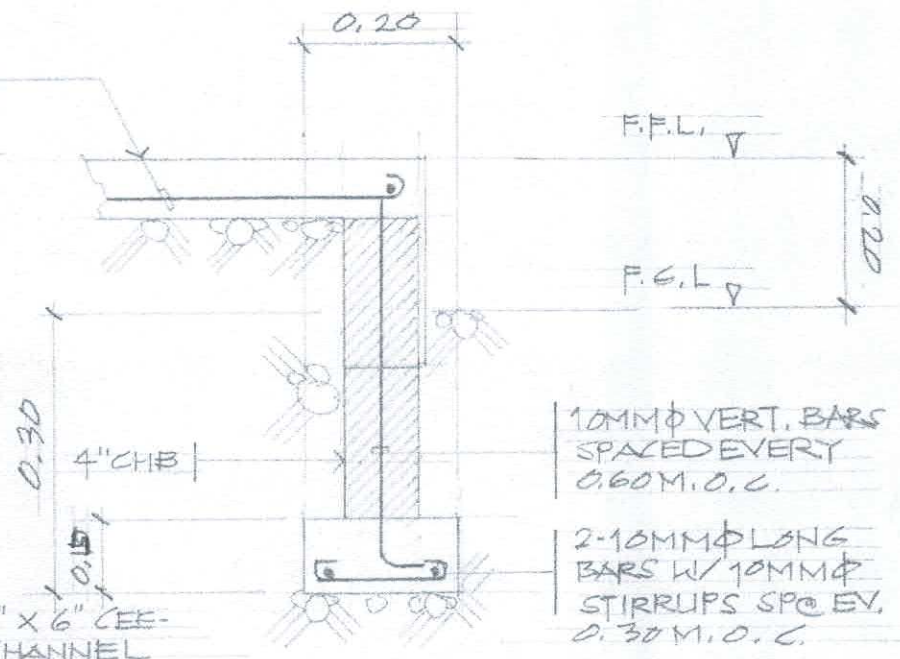
S. 1:30 M.

COLUMN:  
4-12MM Ø VERT. BARS W/ 10MM Ø TIES SP@ EVERY 0.15M, O.C.

FOOTING:  
5-12MM Ø FOOTING BARS BOTHWAY

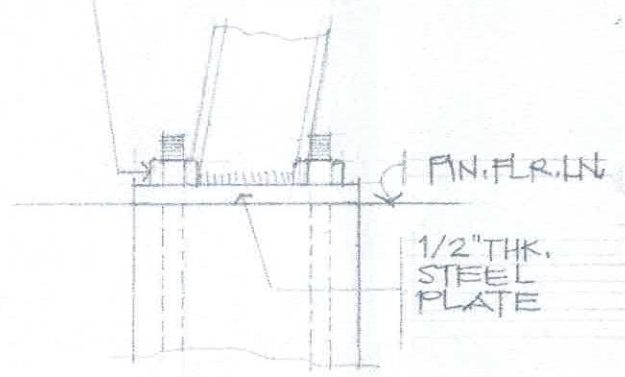


**DET. SEC.**

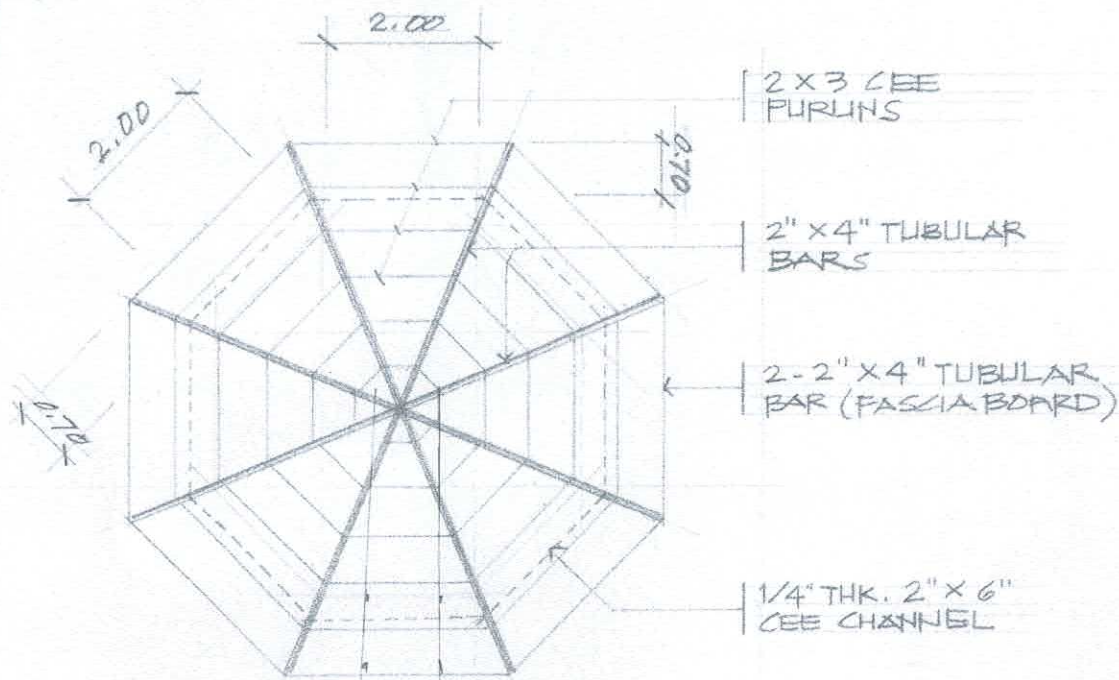


**SPOT DETAIL**

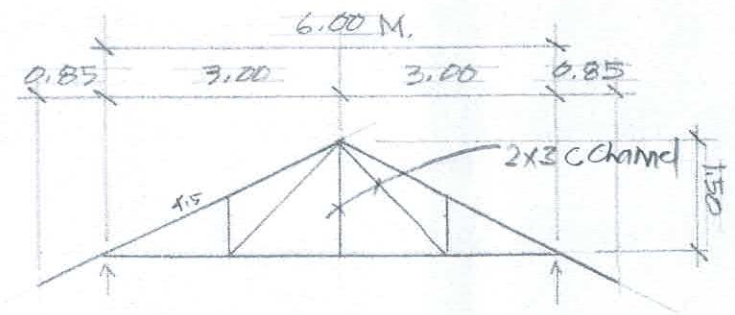
S. 1:10 M.



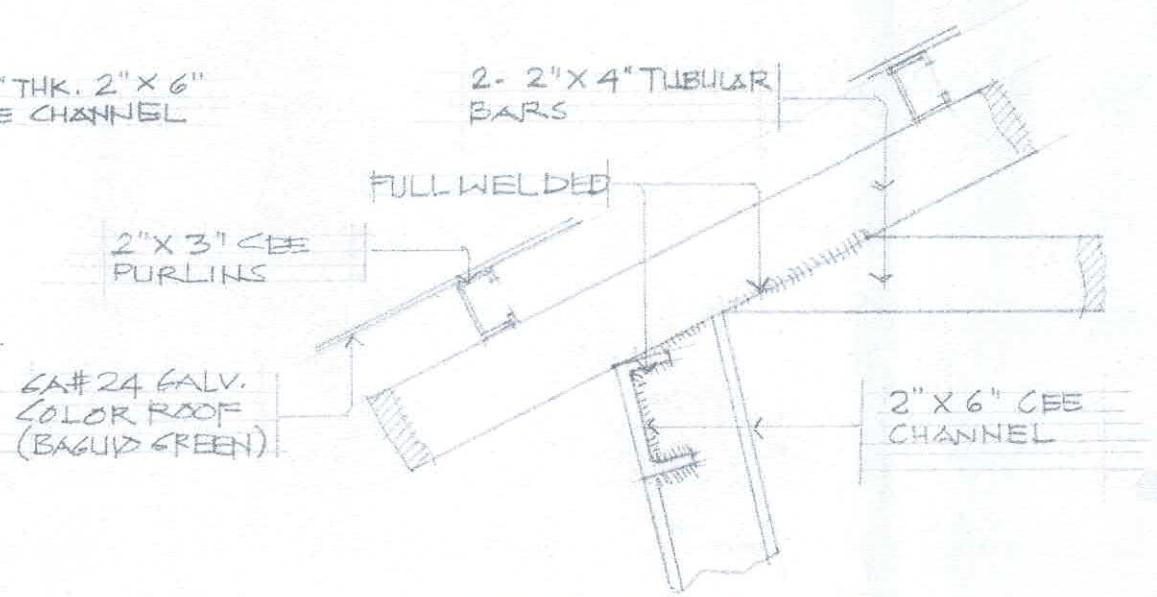
AGENCY	DRAWN BY:	END USER:	ENDORSED BY:	PROJECT TITLE:	APPROVED BY:	SHT. NO.
CvSU	 A. VILLAMADO STAFF, PPS	 JM M. MAYAS MANAGER, AGR-ECO	 D. R. ESCANO DIR. PPS	CONSTRUCTION OF TWO-UNITS PAVILION IN AGR-ECO TOURISM FOREST PARK	 H. D. ROBLES PRESIDENT	2 4



ROOF FRAMING PLAN  
S. 1:100 M.



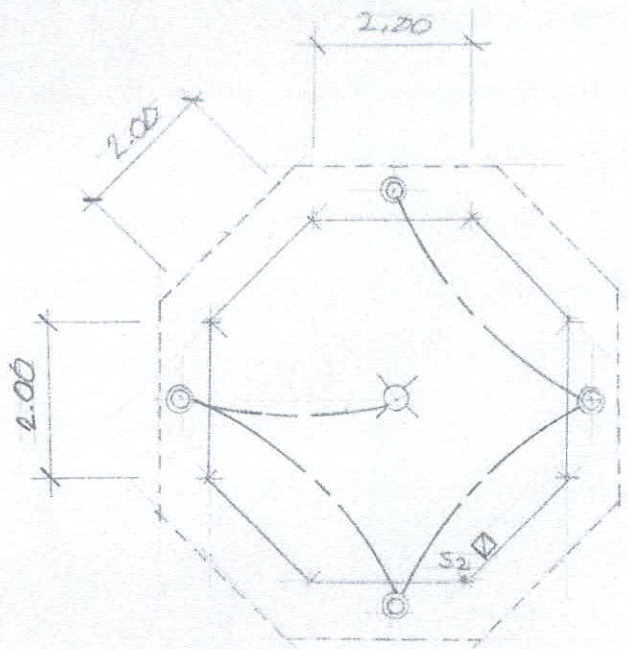
TRUSS DIAGRAM  
S. 1:100 M.



DET. CONNECTION  
S. 1:10 M.

AGENCY	DRAWN BY:	END USER:	ENDORSED BY:	PROJECT TITLE:	APPROVED BY:	SHT. NO.
CvSU	<i>Am</i> A.V. LAMADO STAFF, PPS	<i>Jm Tatar</i> J.M. TATAR MANAGER, AGRI-ECO DIR.	<i>M. S. B.</i> D.R. ESCAÑO PPS	CONSTRUCTION OF TWO-UNITS PAVILION IN AGRI-ECO TOURISM FOREST PARK	<i>Jm Robles</i> H.P. ROBLES PRESIDENT	3 4



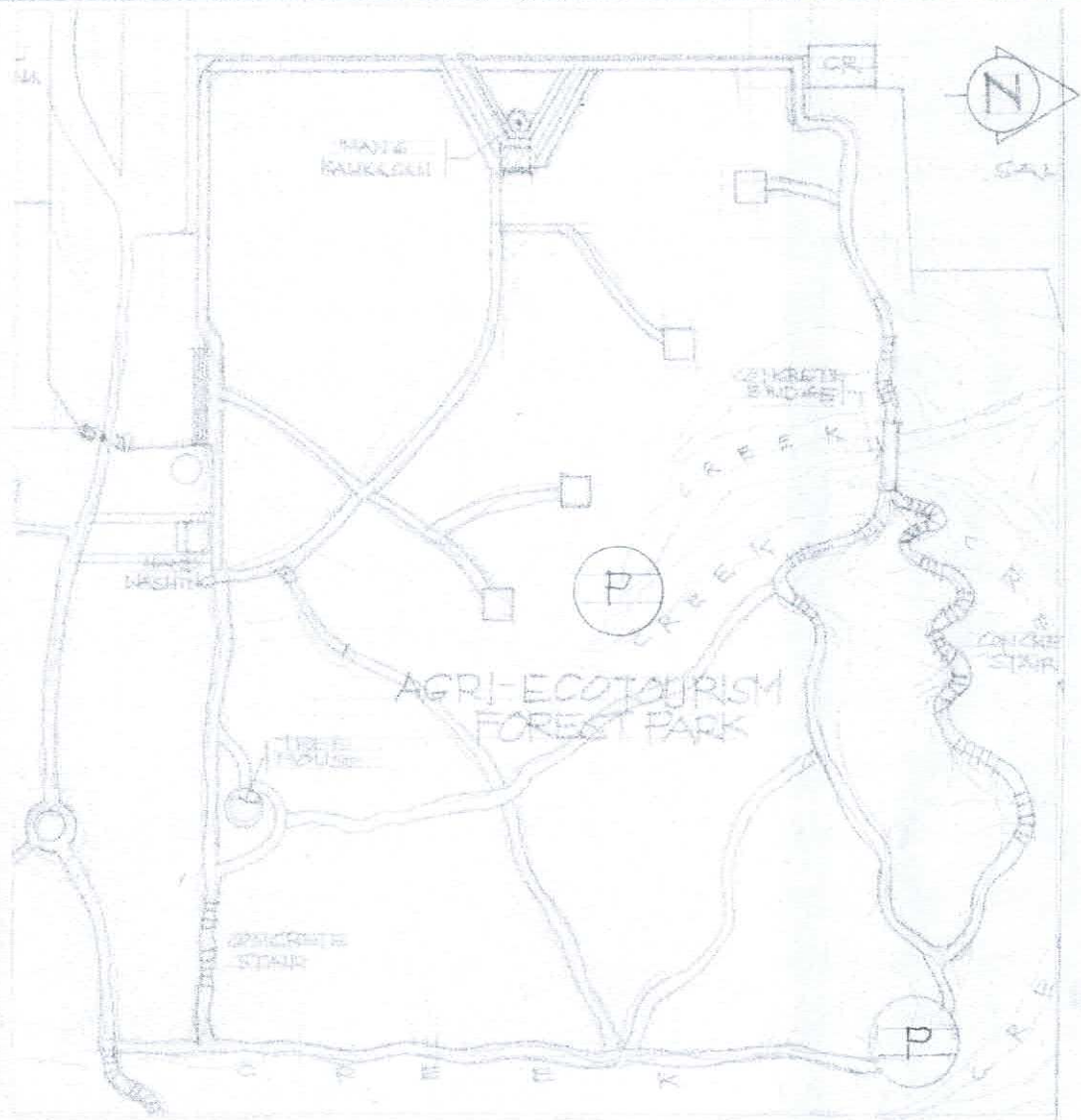


### LIGHTING LAYOUT

S. 1:100 M.

### LEGEND:

- ⊙ PIN LIGHT (7 WATTS) WARM
- ⊗ LED LIGHT (12-15 WATTS) WARM
- LIGHTING LAYOUT
- S<sub>2</sub> 2-SWITCH IN ONE GANG SWITCH
- ◻ CIRCUIT BREAKER (15 AMP.)
- ⊕ PAVILLON



### LOCATION PLAN

AGENCY	DRAWN BY:	END USER	ENDORSED BY:	PROJECT TITLE:	APPROVED BY:
CVSLU	<i>[Signature]</i> A. WILLAMADO STAFF, PPS	<i>[Signature]</i> JM. M. TAYAG MANAGER, AGR-ECO DIR	<i>[Signature]</i> D. R. ESCOBAR PPS	CONSTRUCTION OF TWO-UNITS PAVILLON IN AGR-ECO TOURISM FOREST PARK	<i>[Signature]</i> H. D. ROBLES PRESIDENT
					4
					4