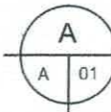
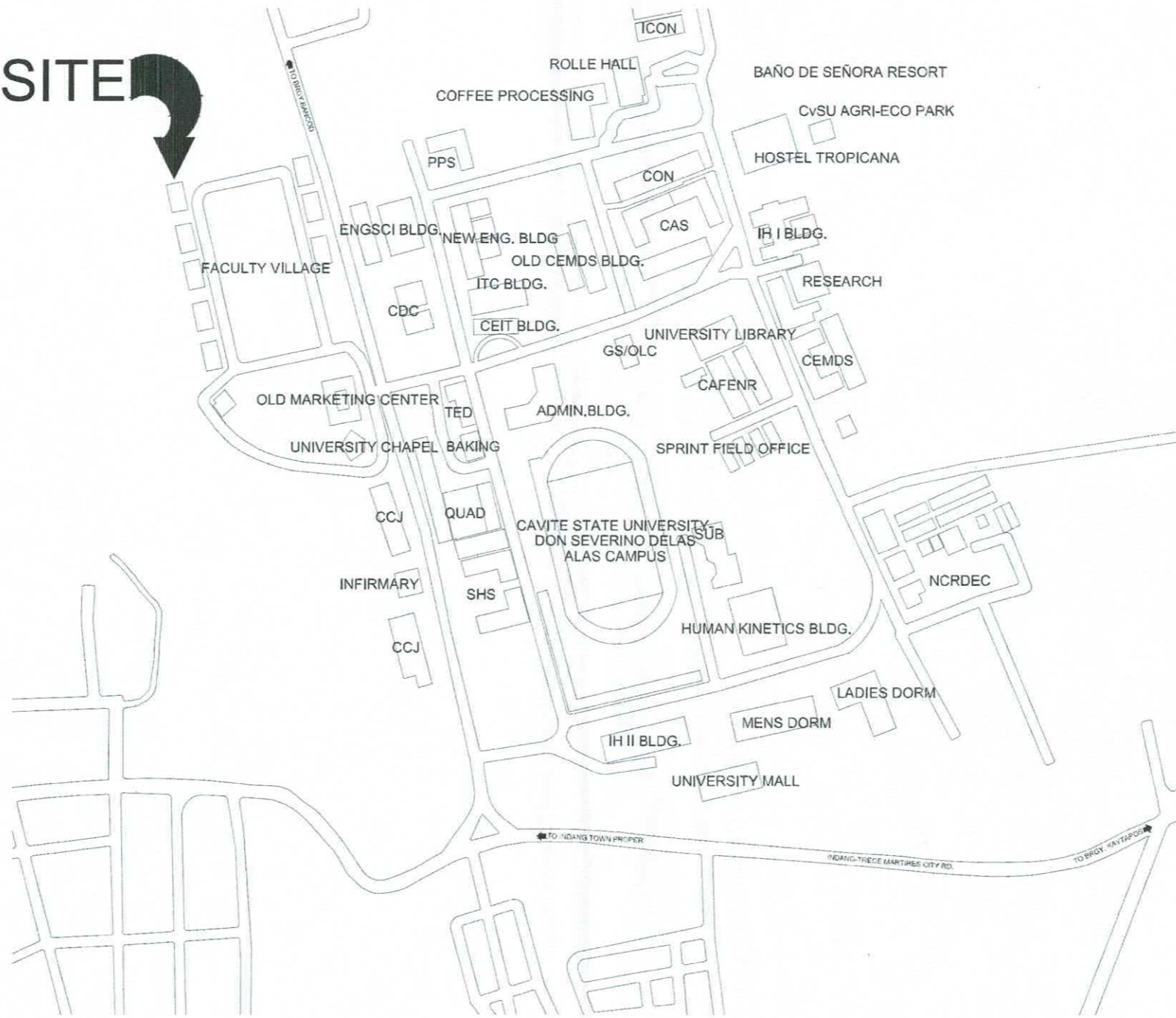


**SITE**

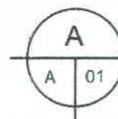
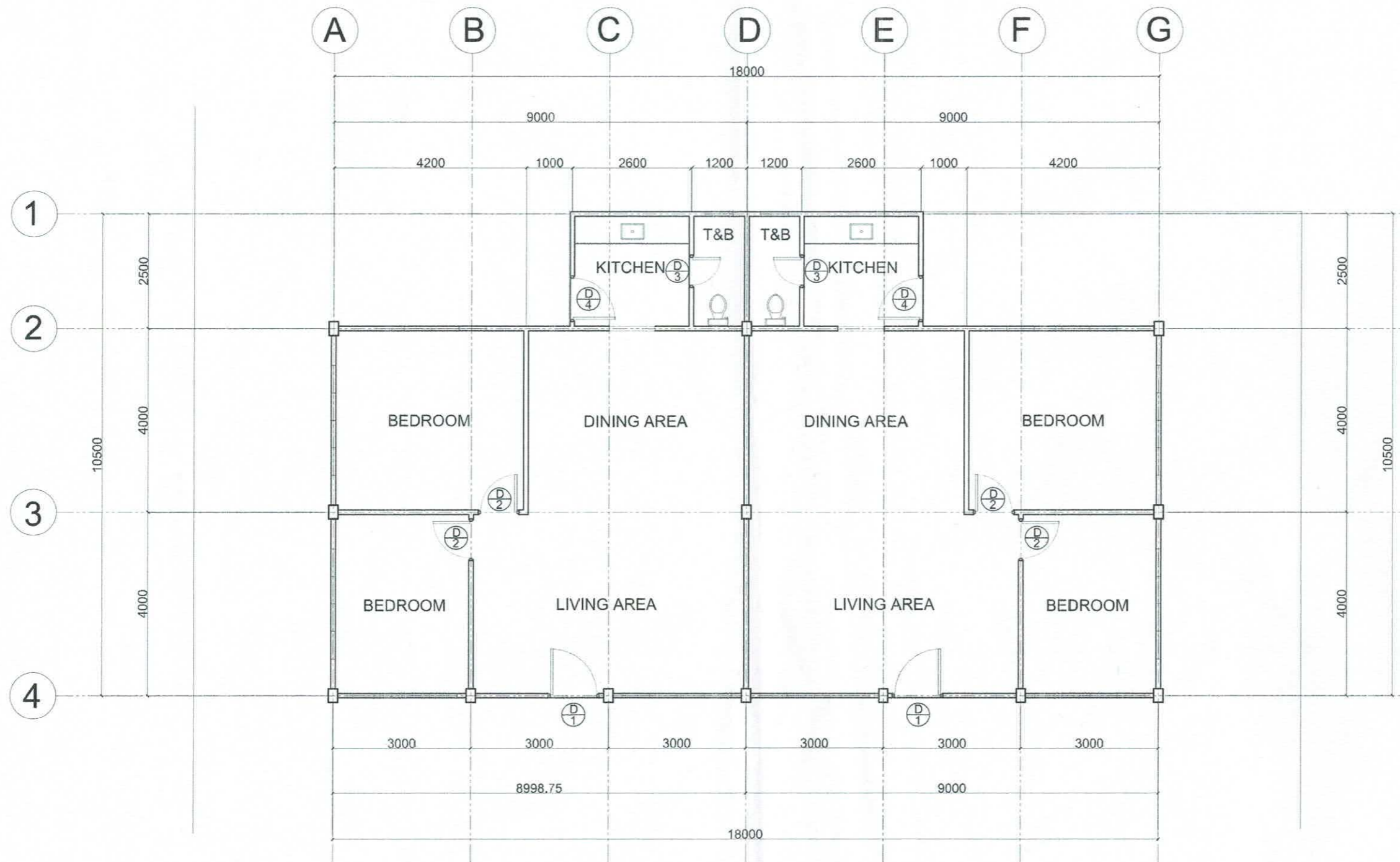


**LOCATION MAP**

SCALE:


NTS

	PREPARED BY	END-USER:	REVIEWED BY	ENDORSED BY:	RECOM. APPROVAL:	APPROVED BY:	PROJECT TITLE:	AGENCY:	SHEET NO:
	 M.N. GATBULA <small>PDU OVPD</small>	 M.C.A. BUENA <small>DIRECTOR BAM</small>	 E.N. RODEROS JR. <small>ARCHITECT PDU</small>	 S. B. BAYOT JR. <small>HEAD PDU</small>	 O.B. DELOS REYES <small>DIRECTOR PDC</small>	 M. I. Q. TEJERA <small>VPPD CvSU</small>	 J. X. S. NEPOMUCENO <small>VPPD CvSU</small>	 M.D. ROBLES <small>PRES CvSU</small>	PROPOSED IMPROVEMENT OF ONE DUPLEX UNIT AT FACULTY VILLAGE CAVITE STATE UNIVERSITY <small>MAIN CAMPUS</small>

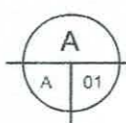


### EXISTING FLOOR PLAN

SCALE: 1:100 MTS

	PREPARED BY:	END-USER:	REVIEWED BY:	ENDORSED BY:	RECOM. APPROVAL:	APPROVED BY:	PROJECT TITLE:	AGENCY:	SHEET NO.:
	 M.N. GATDULA PDU OVPD	 M.C.A. BUENA DIRECTOR BAM	 E.N. RODEROS JR. ARCHITECT PDU	 S. B. BAYOT JR. HEAD PDU	 O.B. DELOS REYES DIRECTOR PDO	 M.J.D. TEPORA VPPD C/SU	 J.X.B. NERI VPPD C/SU	 M.D. ROBLES PRES C/SU	PROPOSED IMPROVEMENT OF ONE DUPLEX UNIT AT FACULTY VILLAGE CAVITE STATE UNIVERSITY MAIN CAMPUS

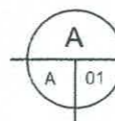
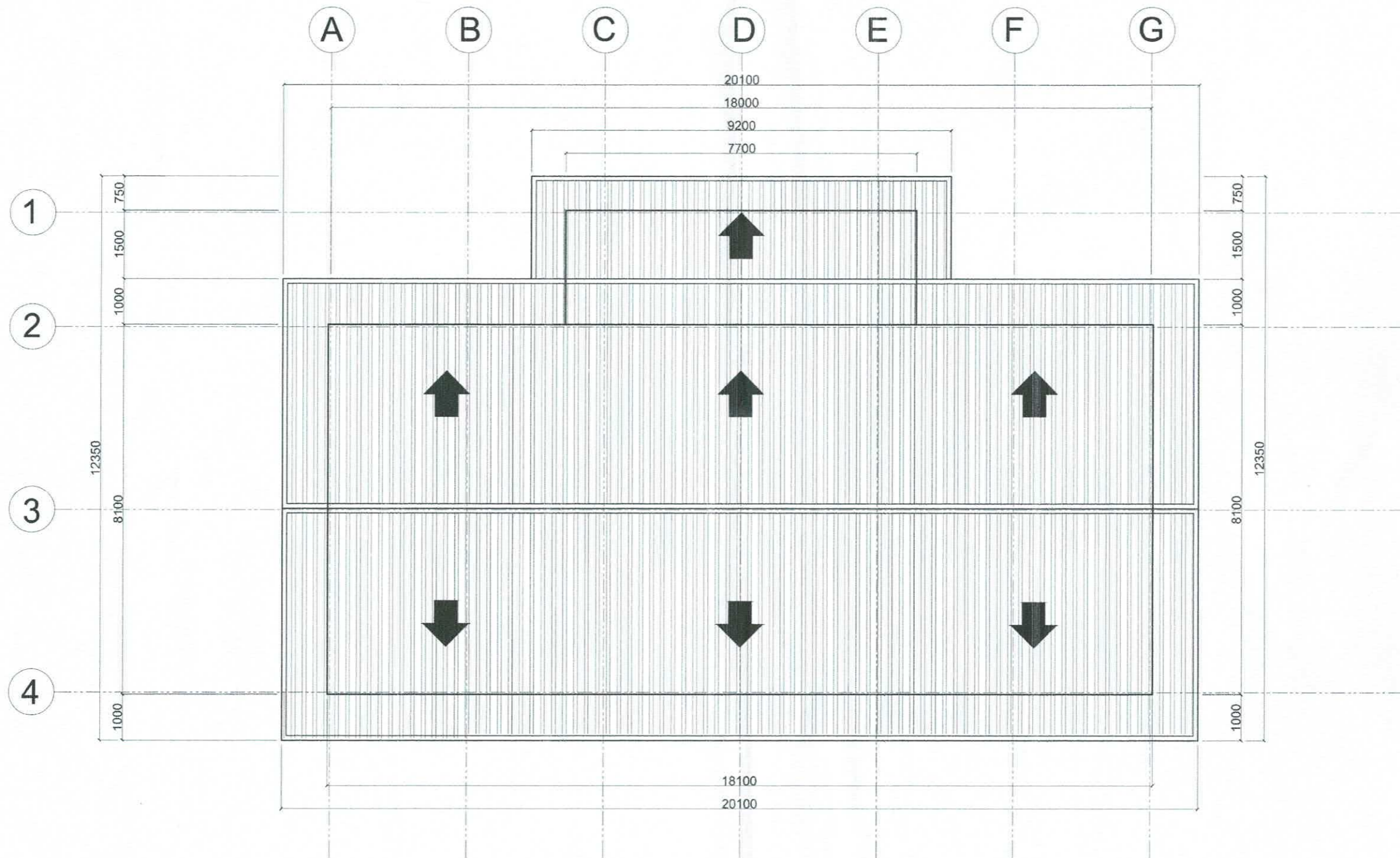
⊙ D 1	⊙ D 2	⊙ D 3	⊙ D 4
SPECIFICATION: PANEL DOOR	SPECIFICATION: FLUSH DOOR	SPECIFICATION: PVC DOOR WITH LOUVER	SPECIFICATION: FLUSH DOOR
QUANTITY: 2 SETS	QUANTITY: 4 SETS	QUANTITY: 2 SETS	QUANTITY: 2 SETS
LOCATION: MAIN DOOR	LOCATION: BEDROOMS	LOCATION: BATHROOM	LOCATION: KITCHEN



## SCHEDULE OF DOORS AND WINDOWS

SCALE: 1:75 MTS

	PREPARED BY:	END-USER:	REVIEWED BY:	ENDORSED BY:	RECOM. APPROVAL:	APPROVED BY:	PROJECT TITLE:	AGENCY:	SHEET NO.:
	 M.N. GATDULA PDU OVRPD	 M.C.A. BUENA DIRECTOR BAM	 E.N. RODEROS JR. ARCHITECT PSU	 S.B. BAYOT JR. HEAD PDU	 O.B. DELOS REYES DIRECTOR PDO	 M.J.D. TEOPORA VPPD CvsU	 J.X.B. NEPOMUCENO VPPD CvsU	 H.D. ROBLES PRES CvsU	PROPOSED IMPROVEMENT OF ONE DUPLEX UNIT AT FACULTY VILLAGE CAVITE STATE UNIVERSITY MAIN CAMPUS

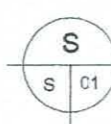
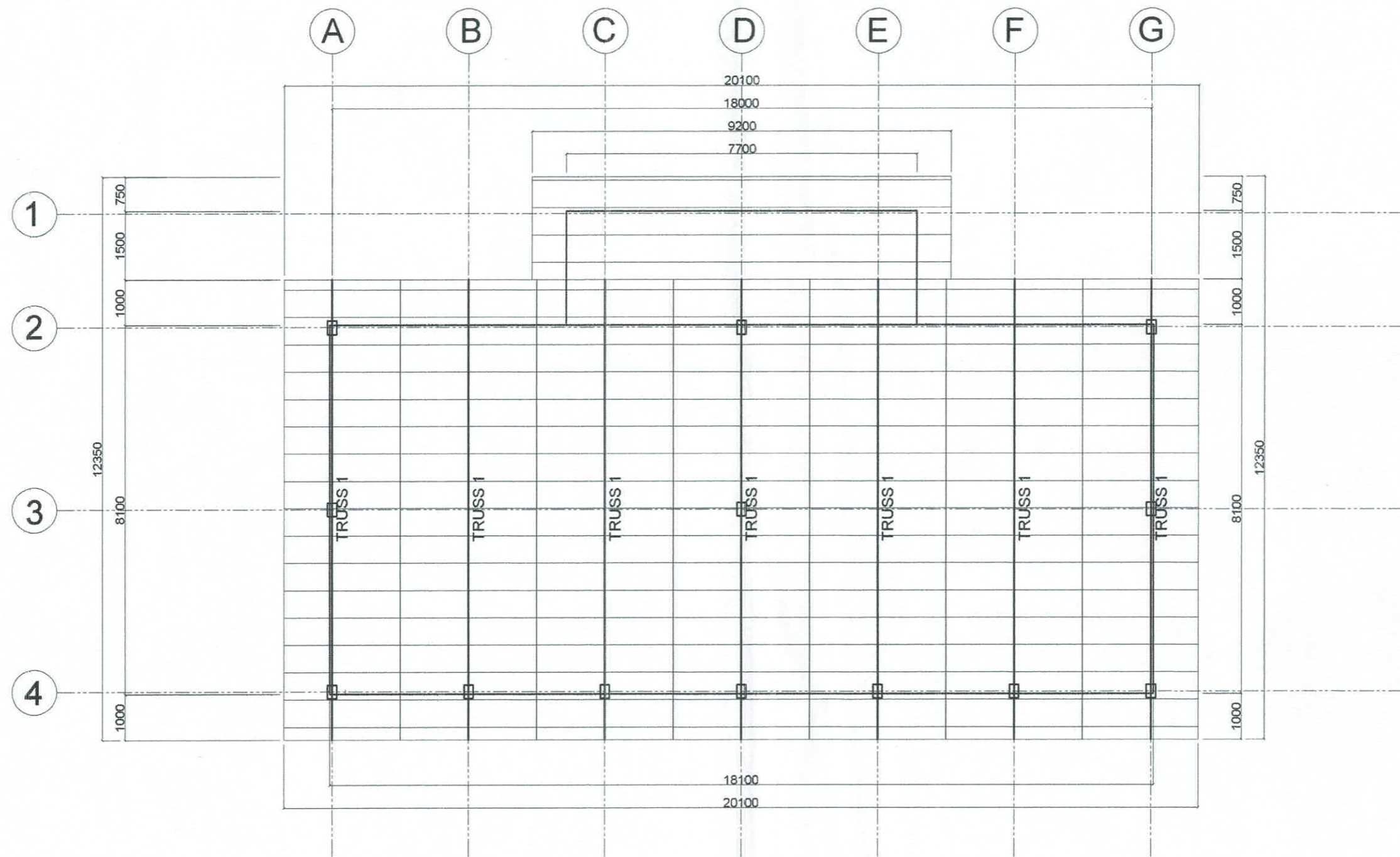


# ROOF PLAN


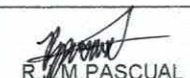


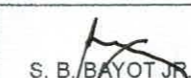

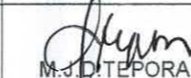
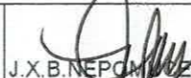

SCALE:

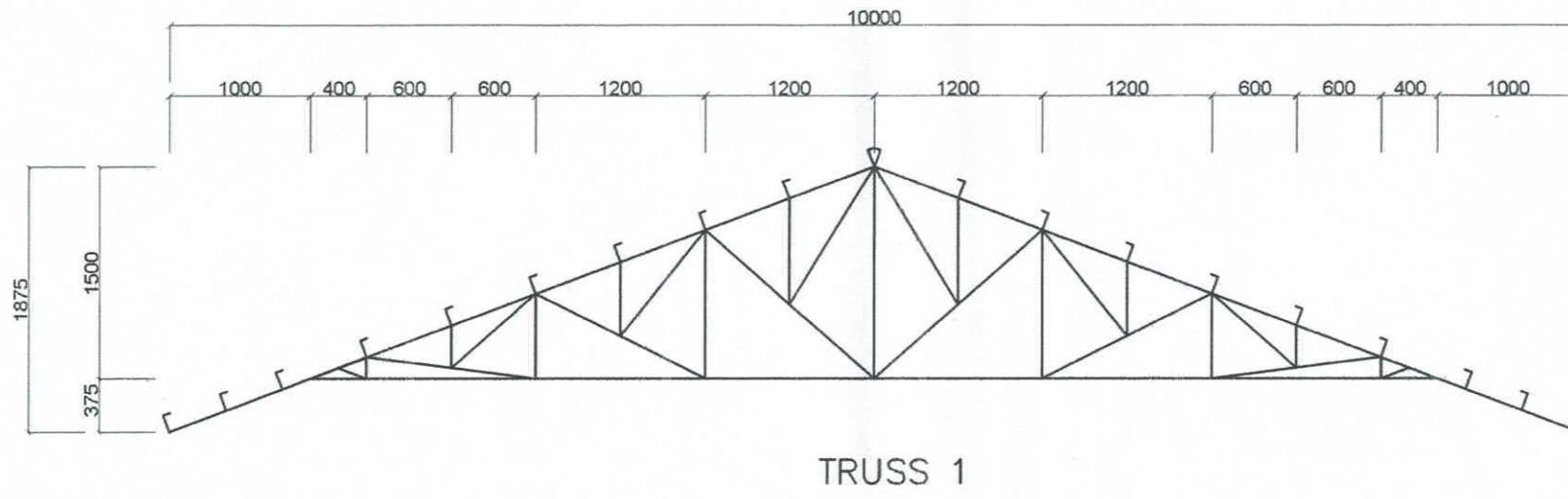
1:100 MTS

	PREPARED BY:	END-USER:	REVIEWED BY:	ENDORSED BY:	RECOM. APPROVAL:	APPROVED BY:	PROJECT TITLE:	AGENCY:	SHEET NO.:
	 M.N. GATDULA PDU O/PPD	 M.C.A. BUENA DIRECTOR BAM	 E.N. RODEROS JR. ARCHITECT PDU	 S. B. BAYOT JR. HEAD PDU	 O.B. DELOS REYES DIRECTOR PDO	 M.J.D. TEABORA VPPD C/SU	 J.X.B. NEPOMUCENO VPPD C/SU	 H.D. ROBLES PRES C/SU	PROPOSED IMPROVEMENT OF ONE DUPLEX UNIT AT FACULTY VILLAGE CAVITE STATE UNIVERSITY MAIN CAMPUS



**ROOF FRAMING PLAN**  
 SCALE: 1:100 MTS

	PREPARED BY:	END-USER:	REVIEWED BY:	ENDORSED BY:	RECOM. APPROVAL:	APPROVED BY:	PROJECT TITLE:	AGENCY:	SHEET NO.:
	 R.M. PASCUAL PDU OVFPD	 M.C.A. BUENA DIRECTOR BAM	 L.E. ROCELA CIVIL ENGINEER	 S. B. BAYOT JR. HEAD PDU	 O.B. DE LOS REYES DIRECTOR PDO	 M.J. TEPORA VPPD CvSU	 J.X.B. NEPOMUCENO VPPD CvSU	 H.D. ROBLES PRES CvSU	PROPOSED IMPROVEMENT OF ONE DUPLEX UNIT AT FACULTY VILLAGE CAVITE STATE UNIVERSITY MAIN CAMPUS

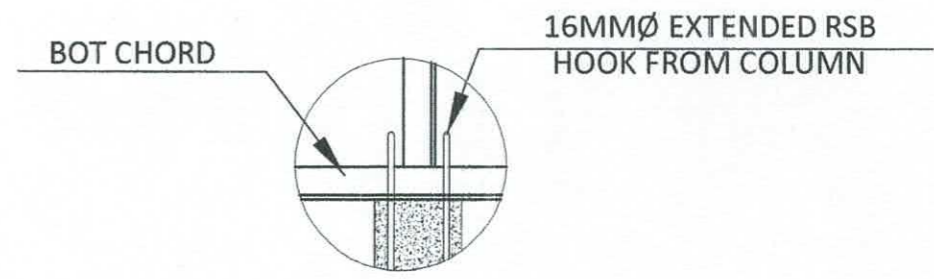


TRUSS 1

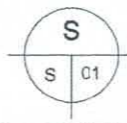
NOTE:

USE THE FOLLOWING:

- 2 - 2.0" X 2.0" X 1/4" THK. ANGULAR BAR FOR TOP CHORDS, BOTTOM CHORDS, & KING POSTS ON TRUSS 1 & LT1
- 2 - 1.5" x 1.5" X 1/4" THK. ANGULAR BAR FOR WEB MEMBERS ON TRUSS 1 & LT1
- 6mm THICK GUSSET PLATES ON ALL JOINTS
- 50mm x 150mm x 1.5mm CEE PURLINS SPACED @ 0.60m O.C.
- 12mm THICK BASE PLATES
- 10 mm Sag Rod on midspan of Trusses



TYPICAL STEEL TRUSS TO BEAM/COLUMN CONNECTION



TRUSS DETAILS





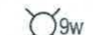










SCALE: 1:50 MTS

	PREPARED BY:	END-USER:	REVIEWED BY:	ENDORSED BY:	RECOM. APPROVAL:	APPROVED BY:	PROJECT TITLE:	AGENCY:	SHEET NO.:
	 R.M. PASCUAL PDU OVPPD	 M.C.A. BUENA DIRECTOR BAH	 L.E. ROCELA CIVIL ENGINEER	 S.B. BAYAT JR. HEAD PDU	 O.B. DE LOS REYES DIRECTOR PDO	 M.J. DITEORA VPPD CvsU	 J.X.B. NEPOMUCENO VPPD CvsU	 H.D. ROBLES PRES CvsU	PROPOSED IMPROVEMENT OF ONE DUPLEX UNIT AT FACULTY VILLAGE CAVITE STATE UNIVERSITY MAIN CAMPUS

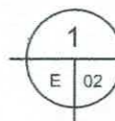
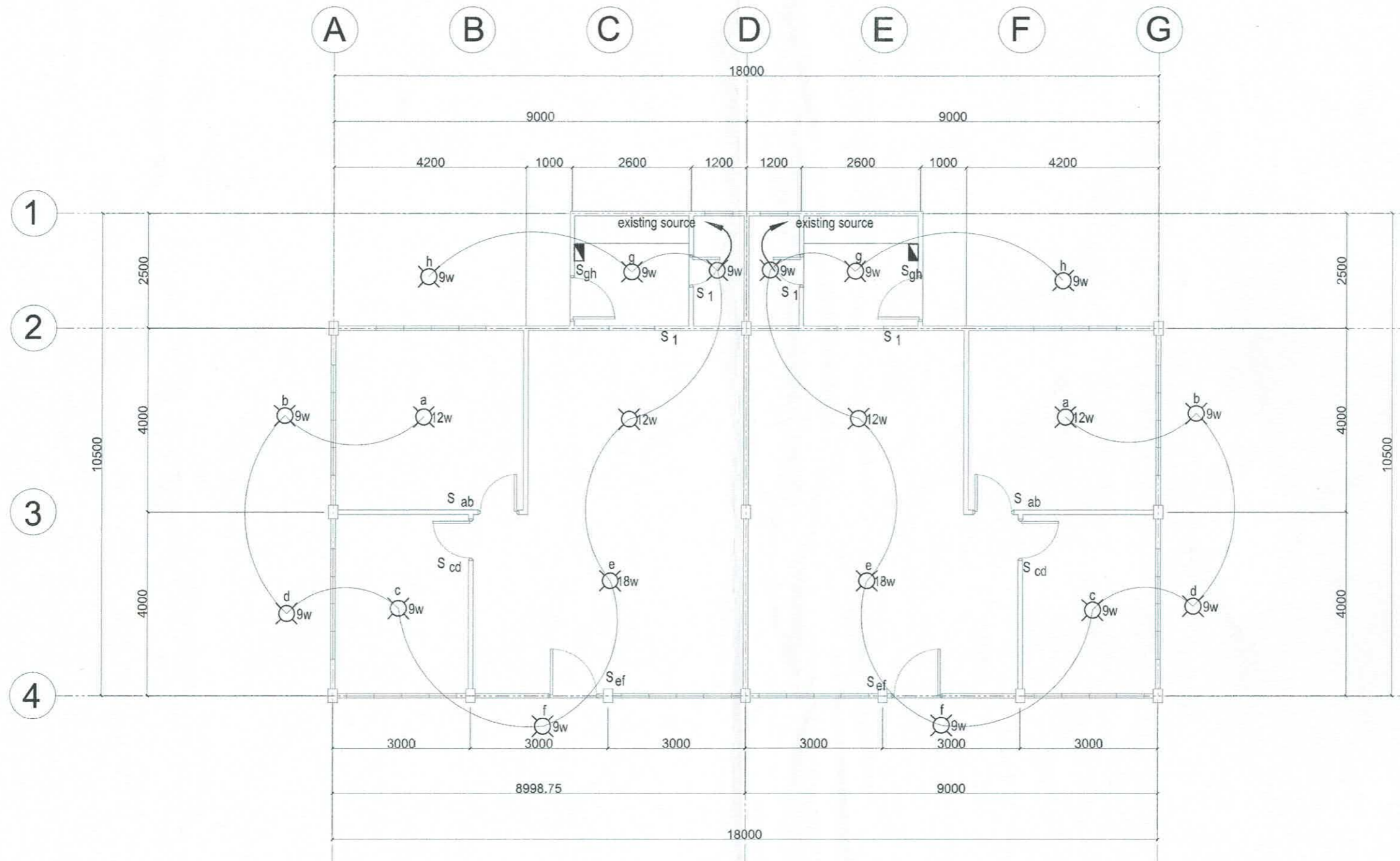
## GENERAL NOTES AND SPECIFICATIONS:

1. ALL ELECTRICAL WORKS TO BE UNDERTAKEN SHALL BE IN ACCORDANCE WITH THE LATEST EDITION OF THE PHILIPPINE ELECTRICAL CODE PART 1 AND 2 AND THE RULES AND REGULATIONS OF LOCAL ENFORCING UTILITY POWER AND TELEPHONE COMPANY.
2. ALL MATERIALS AND EQUIPMENT TO BE USED SHALL BE NEW AND APPROVED TYPE FOR BOTH LOCATION AND PURPOSES.
3. THERE SHALL BE ONLY ONE SERVICE DROP IN A BUILDING 230 VOLTS, 3 WIRE, 1 PHASE, 60 CYCLE.
4. THE ELECTRICAL WORKS SHALL BE UNDER THE IMMEDIATE SUPERVISION OF A DULY LICENSED ELECTRICAL ENGINEER OR MASTER ELECTRICIAN AUTHORIZED FOR EACH GRADE.
5. THE MINIMUM SIZE OF WIRE SHALL BE NUMBER 2.0mmØ COPPER, THHN TYPE UNLESS OTHERWISE NOTED.
6. WIRING METHOD SHALL BE PVC FOR ALL BRANCH CIRCUITS AND RSC FOR SERVICE ENTRANCE.
7. PROPER GROUNDING OR ELECTRICAL EQUIPMENT SHALL BE IN ACCORDANCE WITH THE PHILIPPINE ELECTRICAL CODE.
8. FIELD VERIFICATION SHALL BE DONE BY THE CONTRACTOR ANY DISCRIPANCIES OR CHANGES SHALL BE PROMPTLY NOTIFIED TO THE OWNER'S REPRESENTATIVE OR DESIGNER.
9. TYPE OF LIGHTING FIXTURE SHALL BE SUBMITTED TO THE ENGINEER OR ARCHITECT FOR APPROVAL.
10. MOUNTING HEIGHT
  1. SWITCHES-1400 MM.
  2. CONVENIENCE OUTLET-300 MM.
  3. CONVENIENCE OUTLET (COUNTER)- 400 MM. ABOVE COUNTER.
  4. REFRIGERATOR/ACU/RANGE OUTLET-300 MM.
  5. WATER HEATER-500 MM. BELOW CEILING LINE.
  6. CHIME BELL-300 MM. BELOW CEILING LINE.
  7. TELEPHONE/TV/INTERCOM OUTLET-300 MM.
  8. HEAT/SMOKE DETECTOR-CEILING MOUNTED.
  9. EMERGENCY LIGHT-500 MM. BELOW CEILING LINE.
  10. METER CENTER-SUBMIT SHOP DRAWING FOR APPROVAL.

## LEGEND AND SYMBOLS:

	LIGHTING CIRCUIT		CCTV OUTLET, 16 A, 230 V DUPLEX, UNIVERSAL SLOTS, 3-WIRE, GROUNDING TYPE
	POWER OUTLET CIRCUIT		COUNTER-TOP CONVENIENCE OUTLET, 16 A, 230 V DUPLEX, UNIVERSAL SLOTS, 3-WIRE, GROUNDING TYPE
	9 WATTS LED BULB COMPLETE WITH RECEPTACLE		RANGE POWER OUTLET, 16 A, 230 V DUPLEX, UNIVERSAL SLOTS, 3-WIRE, GROUNDING TYPE
	18 WATTS LED BULB COMPLETE WITH RECEPTACLE	$S_1, S_a$	SWITCH ONE-GANG, WIDE SERIES, 15 A, 230 V
	12 WATTS LED BULB COMPLETE WITH RECEPTACLE	$S_2, S_{ab}$	SWITCH TWO-GANG, WIDE SERIES, 15 A, 230 V
	DUPLEX CONVENIENCE OUTLET, 16 A, 230 V UNIVERSAL SLOTS, 3-WIRE, GROUNDING TYPE	$S_3, S_{abc}$	SWITCH THREE-GANG, WIDE SERIES, 15 A, 230 V
	WEATHER PROOF DUPLEX CONVENIENCE OUTLET, 16 A, 230 V UNIVERSAL SLOTS, 3-WIRE, GROUNDING TYPE	$S_{3w}$	SWITCH THREE-WAY, WIDE SERIES, 15 A, 230 V
	GROUND FAULT CIRCUIT INTERRUPTER OUTLET, 20 A, 230 V DUPLEX, UNIVERSAL SLOTS, 3-WIRE, GROUNDING TYPE		CIRCUIT NUMBER AND HOMERUN
	REFRIGERATOR POWER OUTLET, 16 A, 230 V DUPLEX, UNIVERSAL SLOTS, 3-WIRE, GROUNDING TYPE		PANEL BOARD
	MCCB WITH NEMA 3R METAL ENCLOSURE FOR ACU		

	PREPARED BY:	END-USER:	REVIEWED BY:	ENDORSED BY:	RECOM. APPROVAL:	APPROVED BY:	PROJECT TITLE:	AGENCY:	SHEET NO:
	R.J. R. SANCHEZ PDU OVPD	M.C.A. BUENA DIRECTOR BAM	R.P. PARRA PEE PDU	S. B. BAYOT JR. HEAD PDU	O.B. DELLOS REYES DIRECTOR PDO	M.J. L. TEFORA VPPD C/SU	J.X.B. NEPOMUCENO VPPD C/SU	H.D. ROBLES PRES C/SU	PROPOSED IMPROVEMENT OF ONE DUPLEX UNIT AT FACULTY VILLAGE CAVITE STATE UNIVERSITY MAIN CAMPUS



# LIGHTING LAYOUT

SCALE:

1:100 MTS

	PREPARED BY:	END-USER:	REVIEWED BY:	ENDORSED BY:	RECOM. APPROVAL:	APPROVED BY:	PROJECT TITLE:	AGENCY:	SHEET NO.:
	 <b>R.J. R. SANCHEZ</b> <small>PDU O/VPPD</small>	 <b>M.C.A. BUENA</b> <small>DIRECTOR BAI</small>	 <b>R. P. DEVERA</b> <small>PEE PDU</small>	 <b>S. B. BAYOT JR.</b> <small>HEAD PDU</small>	 <b>O.B. DELOS REYES</b> <small>DIRECTOR PDO</small>	 <b>M.J.D. TEJERA</b> <small>VPPD CvSU</small>	 <b>J.X.B. N. CENO</b> <small>VPPD CvSU</small>	 <b>H.D. ROBLES</b> <small>PRES CvSU</small>	<b>PROPOSED IMPROVEMENT OF ONE DUPLEX UNIT AT FACULTY VILLAGE</b> <small>CAVITE STATE UNIVERSITY MAIN CAMPUS</small>