



Republic of the Philippines
CAVITE STATE UNIVERSITY
Don Severino de las Alas Campus
 Indang, Cavite, Philippines
 ☎ (046) 889-6373
www.cvsu.edu.ph

INVITATION TO SUBMIT QUOTATION

Supply, Delivery and Installation of Office Partition for Knowledge Management Center Office

1. The Cavite State University (CvSU) invites interested firms/supplier to submit quotation for the project **"Supply, Delivery and Installation of Office Partition for Knowledge Management Center Office"** with an Approved Budget for the Contract (ABC) of **Five Hundred Seventy-Three Thousand Seven Hundred Ninety-Four Pesos and 06/100 Only (PhP 573,794.06)**. Quotation received in excess of the ABC shall be automatically rejected at the opening.

Item No.	Unit	Description	Quantity	Unit Cost	Total Cost
Staff Area					
1.	pcs	Laminated Glass Partition, aluminum endtrims, 42mm thickness, 120(h) x 145(w) cm.	2	573,794.06	573,794.06
2.	pcs	Laminated Glass Partition, aluminum endtrims, 42mm thickness, 120(h) x 120(w) cm.	8		
3.	pc	Laminated Glass Partition, aluminum endtrims, 42mm thickness, 120(h) x 95(w) cm.	6		
4.	pcs	Laminated Glass Partition, aluminum endtrims, 42mm thickness, 120(h) x 60(w) cm.	6		
5.	pcs	Table Top, laminated finish, 120(w) x 60(d) cm.	8		
6.	.	Table Top, laminated finish, 95(w) x 45(d) cm.	2		
7.	pcs	Table Top, laminated finish, 85(w) x 45(d) cm.	2		
8.	pcs	Table Top, laminated finish, 35(w) x 45(d) cm.	4		
9.	pcs	Metal Legs, powder coated finish	6		
10.	pc	Counter Top, laminated finish, 120(w) x 30(d) cm.	1		
11.	pcs	Staff Chair, mesh backrest, fabric upholstered, chrome base, color: black	2		
12.	pcs	Mobile Pedestal, 3 drawers, powder coated finish, w/ lock & keys, color: light gray or beige	2		
13.	pcs	Hanging Cabinet, laminated finish, 4 swingout doors, 155(w) x 40(d) x 60(h) cm.	2		
14.	pc	Laminated partition door, 61mm thickness, aluminum endtrims, 260(h) x 90(w) cm	1		
15.	pc	Glass Partition, analok finish, aluminum glass, 260(h) x 46(w) cm	1		

Executive Room			
16.	pc	Executive Table, tempered glass top, perforated front panel, metal legs, w/ side table cabinet, 180(w) x 85(d) x 76(h) cm	1
17.	pc	Sr. Executive Chair, high backrest, black leatherette, chrome base w/ caster, w/ armrest	1
Conference & Pantry Area			
18.	pc	Laminated Glass Partition, aluminum endtrims, 42mm thickness, w/ frosted sticker, 110(w) x 180(h) cm.	1
19.	pc	Laminated Glass Partition, aluminum endtrims, 42mm thickness, w/ frosted sticker, 100(w) x 180(h) cm.	1
20.	pc	Laminated Glass Partition, aluminum endtrims, 42mm thickness, w/ frosted sticker, 95(w) x 180(h) cm.	1
21.	pc	Laminated Glass Door Partition, aluminum endtrims, 42mm thickness, w/ frosted sticker, 80(w) x 180(h) cm.	1
22.	pc	Laminated Partition, aluminum endtrims, 42mm thickness, 100(w) x 180(h) cm.	1
23.	pc	Laminated Partition, aluminum endtrims, 42mm thickness, 95(w) x 180(h) cm.	1
24.	pc	Laminated Partition, aluminum endtrims, 42mm thickness, 60(w) x 180(h) cm.	1
25.	pc	Conference table, laminated finish top & legs, round, 70 diameter, 3 seater	1
26.	pc	Pantry table, laminated finish top, marine ply, metal legs, 180(w) x 40(d) x 75(h) cm	1
27.	pcs	Conference chair, cantilever, w/ armrest, mesh backrest, color: black	3
28.	pcs	Pantry chair, powder coated metal legs, polypropylene seat & backrest, 4 legged	3
(Please see attached Lay-Out)			
TOTAL AMOUNT			573,794.06

2. Delivery Period: ____ calendar days from the receipt of P.O.
3. Price quotations must be valid for a period of sixty (60) calendar days from date of submission and shall include all taxes, duties and/or levies payable. Bidders shall also indicate the brand and model of the items being offered.
4. Warranty shall be for a period of six (6) months for supplies and materials. Warranty for equipment must not be less than one (1) year from the date of acceptance and shall be accompanied with Warranty Certificate.
5. The quotation must be submitted to the Procurement Office through mail, fax or email at the contact details listed below **on or before 5:00 PM of February 26, 2025.**

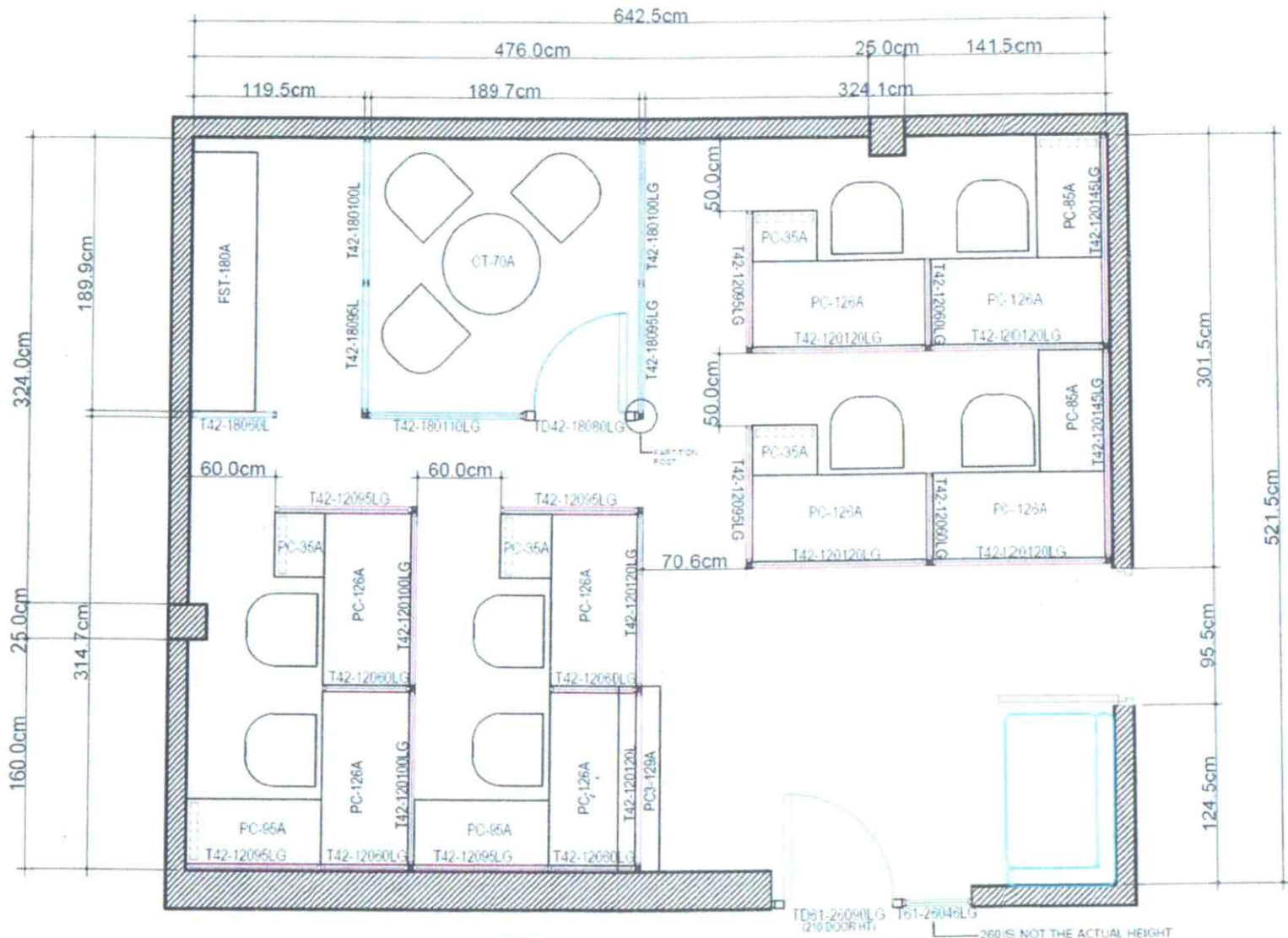
Address : Procurement Office, Administration Building
Cavite State University
Indang, Cavite

E-mail : procurementoffice@cvsu.edu.ph / rfqmain@cvsu.edu.ph

Telefax : (046) 889-6373

6. The CvSU reserves the right to reject any or all quotations and/or proposals and waive any formalities/informalities therein and to accept such bids it may consider as most advantageous to the agency and to the government. CvSU neither assumes any obligation for whatsoever losses that may be incurred in the preparation of bids, nor does it guarantee that an award will be made.


ROSELYN M. MARANAN
BAC Secretary, Goods and Consulting Services



FLOOR PLAN
 SCALE NTS

	PREPARED BY F. A. RAMOS <small>IPU DVPPD</small>	END USER A.C. FRANCISCO <small>Director KMC</small>	REVIEWED BY E. N. RODRIGES JR. <small>ARCHITECT</small>	ENDORSED BY S. B. BAYOT JR. <small>HEAD</small>	ENDORSED BY O.B. DELOS REYES <small>DIRECTOR PLANNING & DEV. OFFICE</small>	REC. APPROVAL A.G. MAGCAWAS <small>VPPD</small>	APPROVED BY J.P. DE VERA <small>VPASS</small>	APPROVED BY X.B. MENDOZA <small>VPASS</small>	APPROVED BY X.B. MENDOZA <small>VPASS</small>	PROJECT TITLE: LOCATION SUPPLY AND INSTALLATION OF OFFICE PARTITIONS FOR KNOWLEDGE MANAGEMENT CENTER OFFICE CAVITE STATE UNIVERSITY MAIN CAMPUS	IMPLEMENTING AGENCY CAVITE STATE UNIVERSITY	SHIT NO. A - 1
--	---	--	--	--	--	--	--	--	--	---	---	--------------------------