

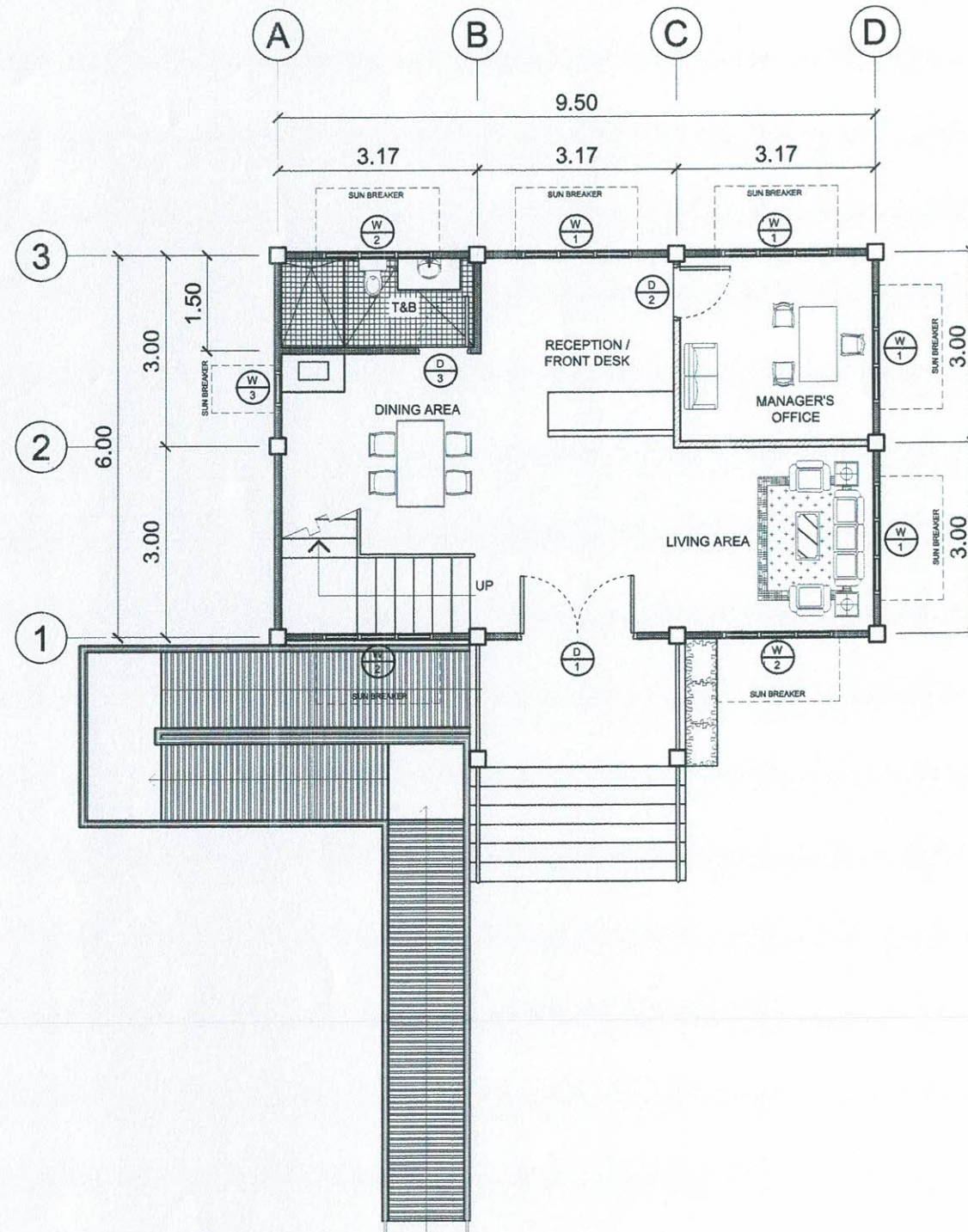
1
A1

SITE DEVELOPMENT PLAN

SCALE

1 : 150 MTS.

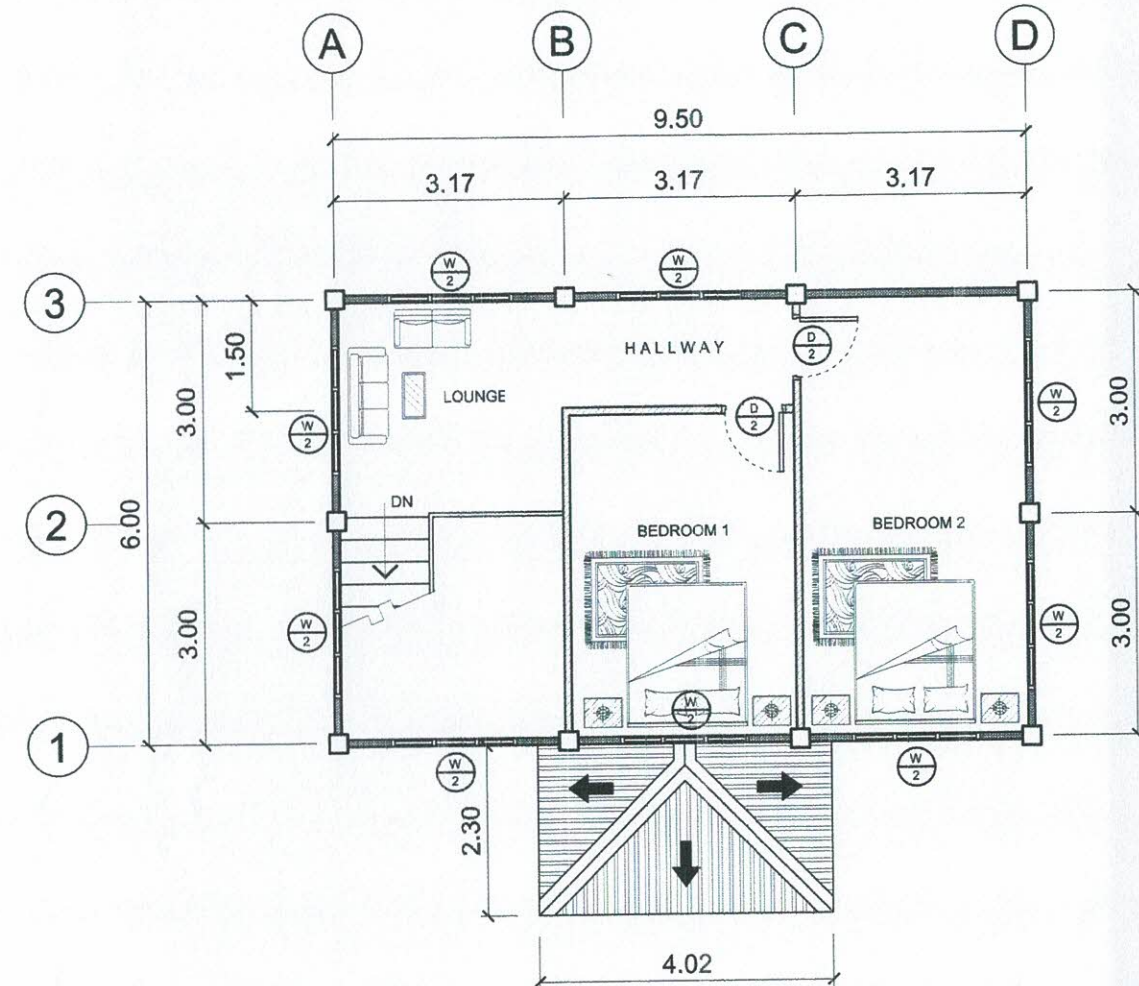
	PREPARED BY: L. M. ABELLÁN IPCO GVPPE	END USER: A. P. FERRER DEAN CED	REVIEWED BY: E. N. RODEROS JR. ARCHITECT	ENDORSED BY: S. B. BAYOT JR. HEAD PDU	ENDORSED BY: O. B. DELOS REYES DIRECTOR PLANNING AND DEVT. OFFICE	REC. APPROVAL: M. J. D. TEPORA VPPD CVSU	REC. APPROVAL: J. X. B. NEPOMUCENO VPASS CVSU	APPROVED BY: H. D. ROBLES PRES CVSU	PROJECT TITLE/ LOCATION: REPAIR AND IMPROVEMENT OF BEAUTIFUL HOUSE (GRANARY) CAVITE STATE UNIVERSITY MAIN CAMPUS	IMPLEMENTING AGENCY: CAVITE STATE UNIVERSITY	SHT NO: A - 1
--	---	---	--	---	---	--	---	---	--	---	-------------------------



1
A/2
SCALE

GROUND FLOOR PLAN

1 : 100 MTS.



2
A/2
SCALE

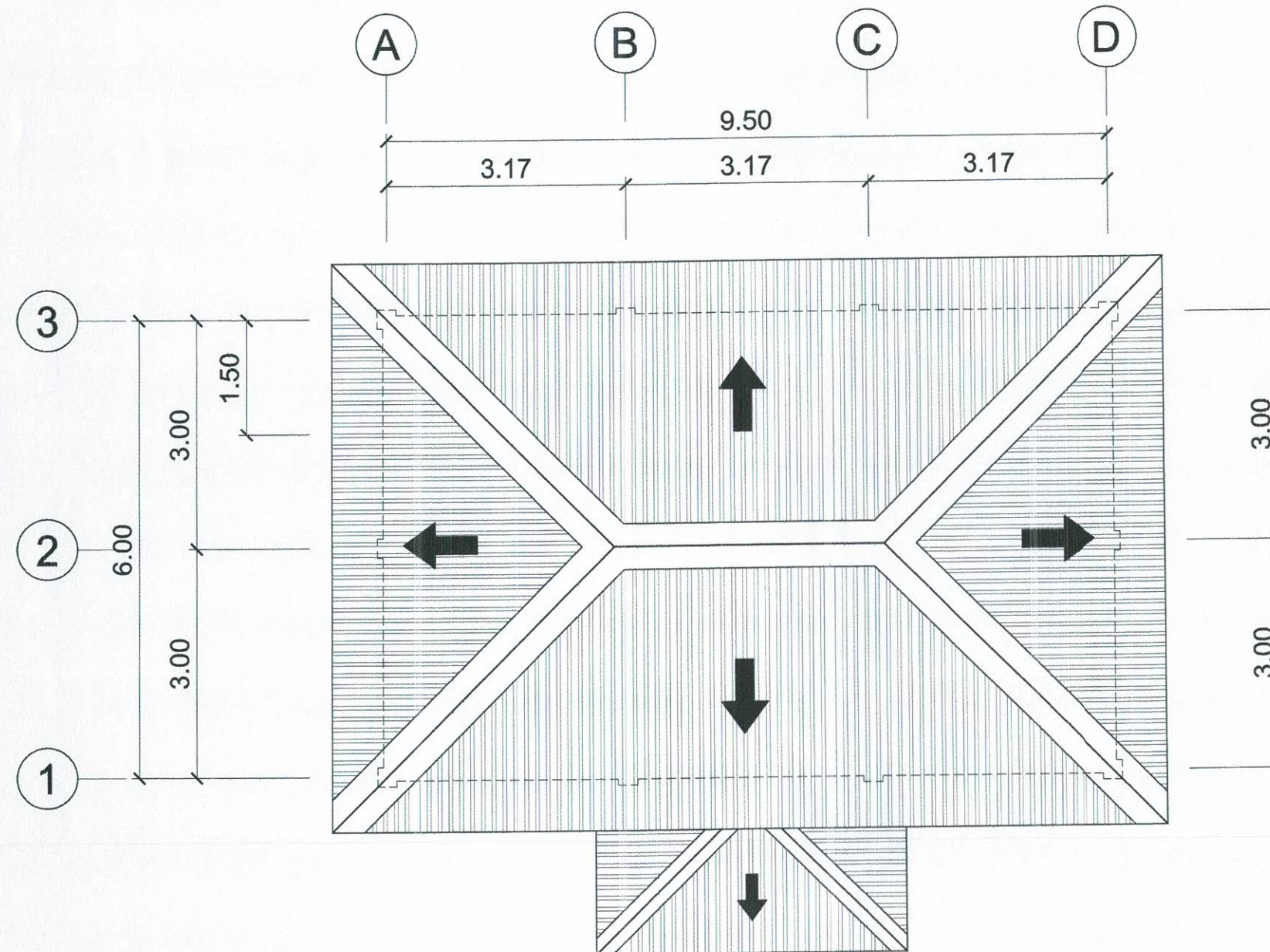
SECOND FLOOR PLAN

1 : 100 MTS.

LEGENDS:

- EXISTING CHB WALLS
- DRYWALL

	PREPARED BY: L. M. ABELLAR IPU	END USER: A. P. FERRER DEAN	REVIEWED BY: E. N. RODEROS JR. ARCHITECT	ENDORSED BY: S. B. BAYOT JR. HEAD	O. B. DELOS REYES DIRECTOR	M. J. D. TEPORA VPPD	J. X. B. NEPOMUCENO VPASS	H. D. ROBLES PRES	PROJECT TITLE/ LOCATION: REPAIR AND IMPROVEMENT OF BEAUTIFUL HOUSE (GRANARY) CAVITE STATE UNIVERSITY	MAIN CAMPUS	IMPLEMENTING AGENCY: CAVITE STATE UNIVERSITY	SHT NO: A - 2
--	--------------------------------------	-----------------------------------	--	---	-------------------------------	-------------------------	------------------------------	----------------------	---	-------------	---	------------------



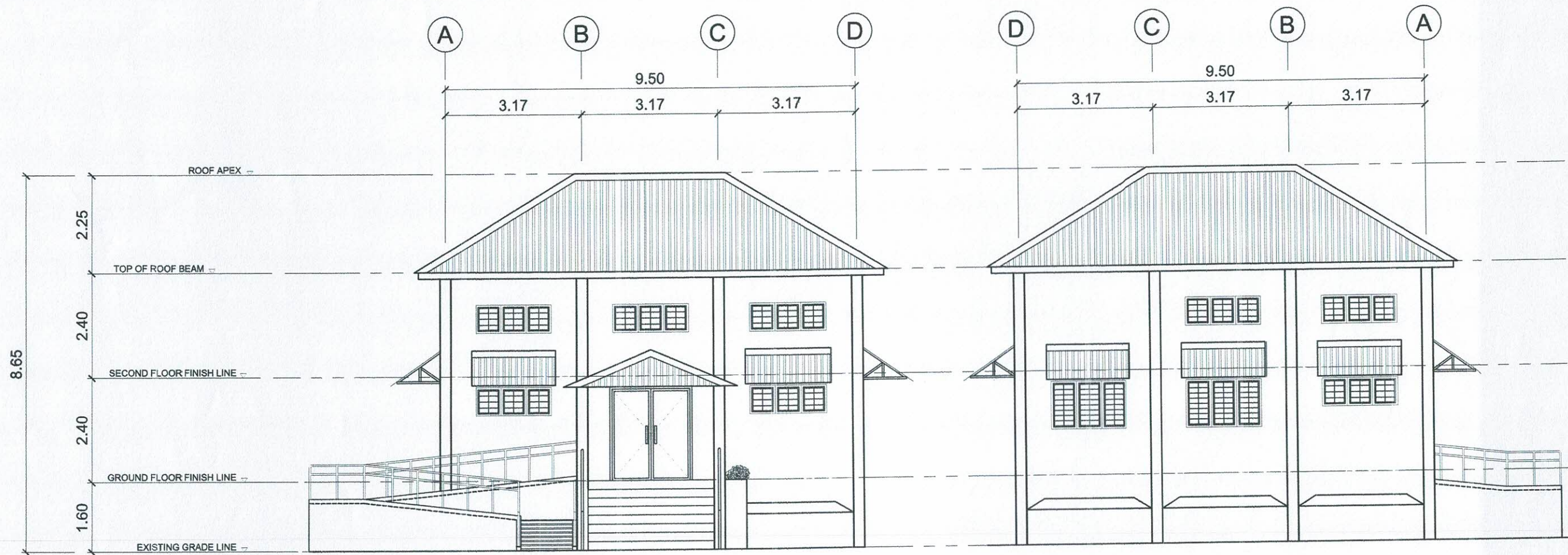
1
A/3

SCALE

ROOF PLAN

1 : 75 MTS.

	PREPARED BY: L. M. ABELAR IFU OVPBO	END USER: A. P. FERRER DEAN CED	REVIEWED BY: E. N. RODRIGOS JR. ARCHITECT	S. B. BAYOT JR. HEAD PDU	ENDORSED BY: S. B. DELOS REYES DIRECTOR PLANNING AND DEVT. OFFICE	REC. APPROVAL: M. J. DTEPORA VPPD CVSU	J. X. B. NEPOMUCENO VPASS CVSU	APPROVED BY: H. D. ROBLES PRES CVSU	PROJECT TITLE/ LOCATION: REPAIR AND IMPROVEMENT OF BEAUTIFUL HOUSE (GRANARY) CAVITE STATE UNIVERSITY MAIN CAMPUS	IMPLEMENTING AGENCY: CAVITE STATE UNIVERSITY	SHT NO: A - 3
--	---	---------------------------------------	---	-----------------------------	---	--	-----------------------------------	---	---	--	------------------



1
A/4

FRONT ELEVATION

SCALE

1 : 100 MTS.

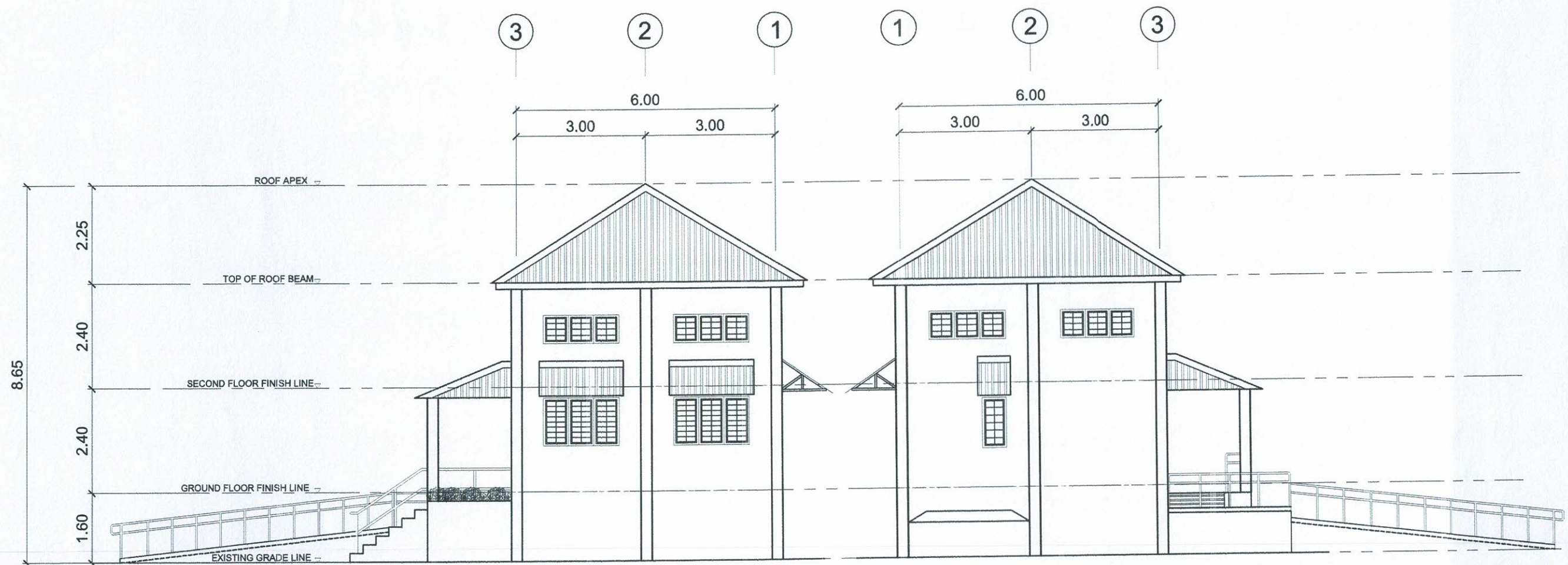
2
A/4

REAR SIDE ELEVATION

SCALE

1 : 100 MTS.

	PREPARED BY: L. M. ABELLAR IPG	END USER: A. P. FERRER DEAN	REVIEWED BY: E. N. RODEROS JR. ARCHITECT	ENDORSED BY: S. B. BAYOT JR. HEAD	REC. APPROVAL: Q. B. DELOS REYES DIRECTOR PLANNING AND DEVT. OFFICE	APPROVED BY: M. J. D. TEPORA VPPD	APPROVED BY: J. X. B. NEPOMUCENO VPASS	APPROVED BY: M. D. ROBLES PRES	PROJECT TITLE/LOCATION: REPAIR AND IMPROVEMENT OF BEAUTIFUL HOUSE (GRANARY) CAVITE STATE UNIVERSITY MAIN CAMPUS	IMPLEMENTING AGENCY: CAVITE STATE UNIVERSITY	SHT NO: A - 4
--	--------------------------------------	-----------------------------------	--	---	---	---	--	--------------------------------------	---	--	------------------



1
A/5

RIGHT SIDE ELEVATION

SCALE

1 : 100 MTS.

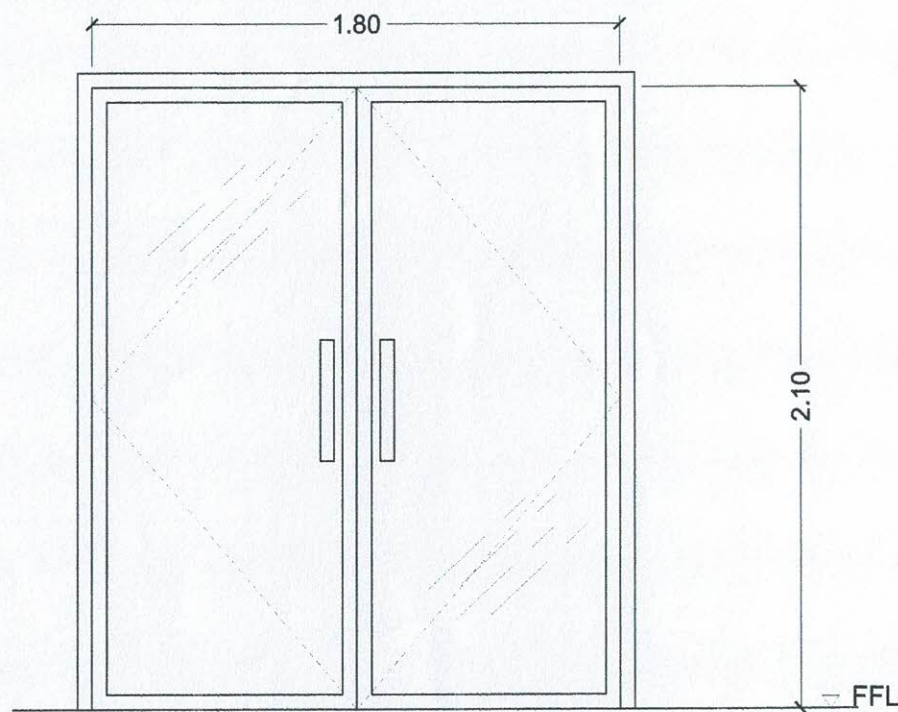
2
A/5

LEFT SIDE ELEVATION

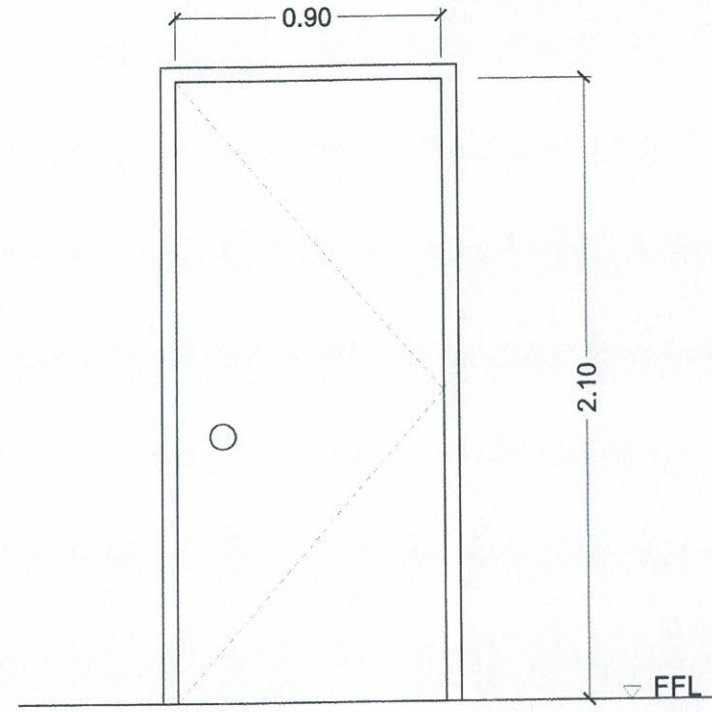
SCALE

1 : 100 MTS.

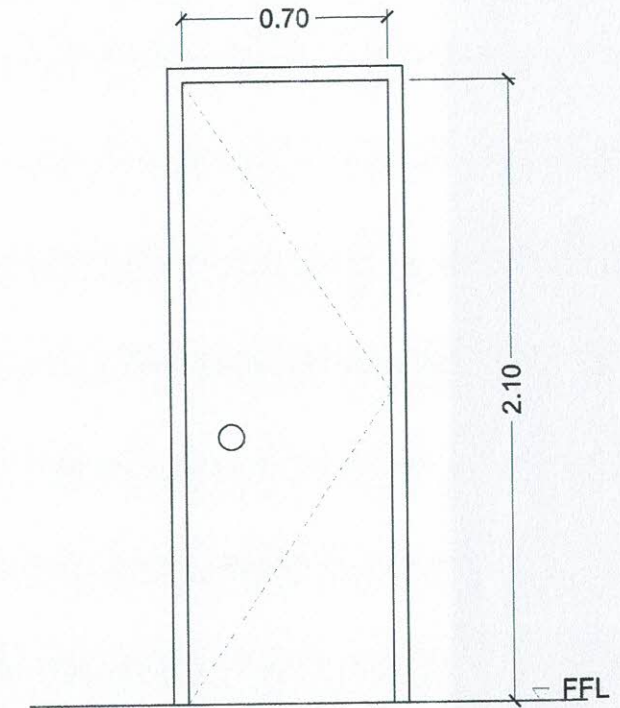
	PREPARED BY: L. M. ABELLAR IPU QVPPD	END USER: A. P. FERRER DEAN CED	REVIEWED BY: E. N. RODEROS JR. ARCHITECT	ENDORSED BY: S. B. BAYOT JR. HEAD PDU	 O. B. DELOS REYES DIRECTOR PLANNING AND DEVT. OFFICE	REC. APPROVAL: M. J. D. TEPORA VPPD CVSU	 J. X. B. NEPOMUCENO VPASS CVSU	APPROVED BY: H. D. ROBLES PRES CVSU	PROJECT TITLE/ LOCATION: REPAIR AND IMPROVEMENT OF BEAUTIFUL HOUSE (GRANARY) CAVITE STATE UNIVERSITY MAIN CAMPUS	IMPLEMENTING AGENCY: CAVITE STATE UNIVERSITY	SHT NO: A - 5
--	--	---	--	---	--	--	--	---	--	---	-------------------------



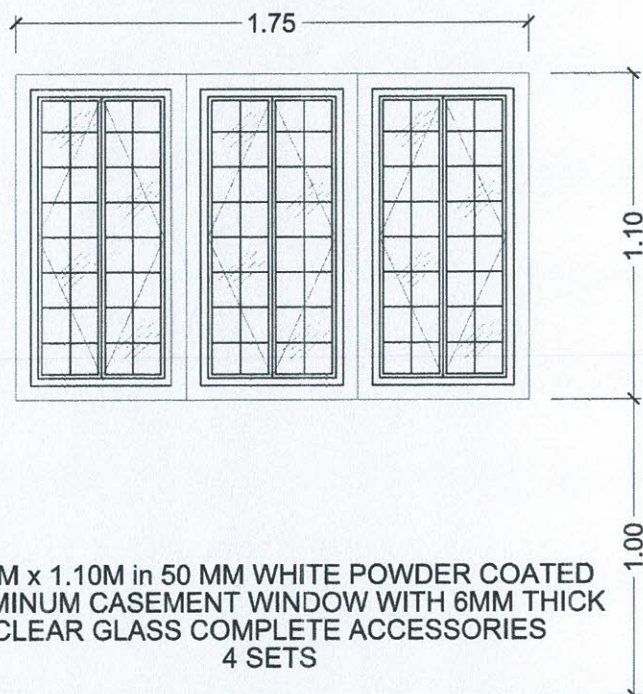
D
1 1.80M x 2.10M, DOUBLE SWING DOOR WITH TEMPERED GLASS ON 50 MM WHITE POWDER COATED ALUMINUM FRAME WITH COMPLETE ACCESSORIES
1 SET



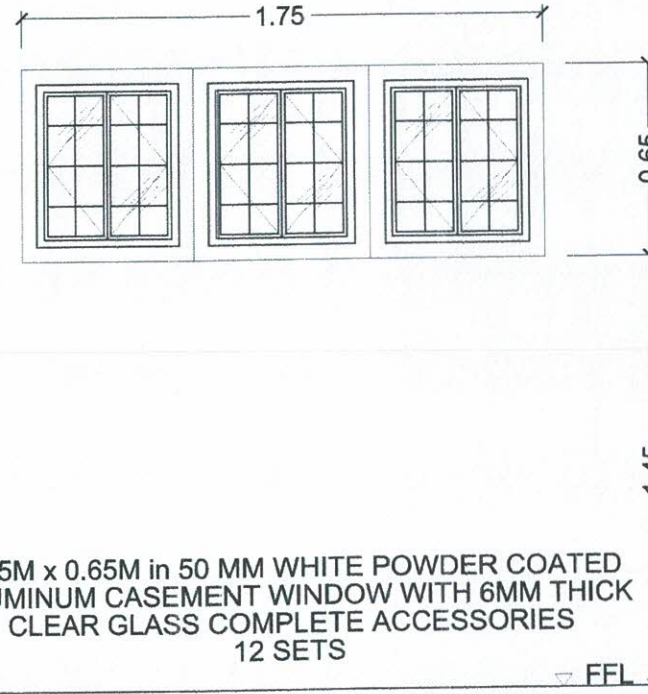
D
2 0.90M x 2.10M, PANEL DOOR ON 50MM WOOD JAMB WITH COMPLETE ACCESSORIES
3 SETS



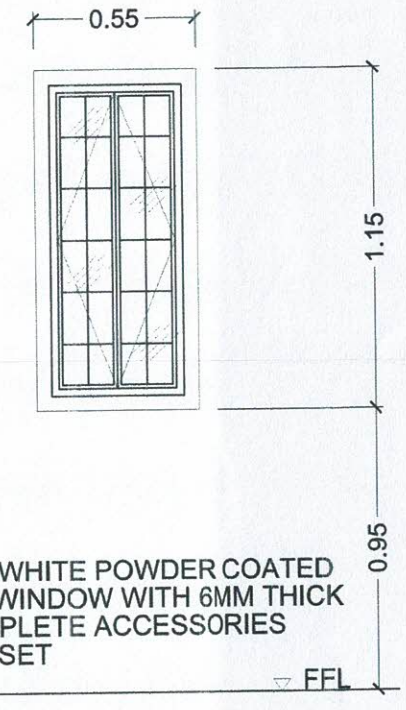
D
3 0.70M x 2.10M, ALUMINUM DOOR ON 50MM JAMB WITH COMPLETE ACCESSORIES
1 SET



W
1 1.75M x 1.10M in 50 MM WHITE POWDER COATED ALUMINUM CASEMENT WINDOW WITH 6MM THICK CLEAR GLASS COMPLETE ACCESSORIES
4 SETS



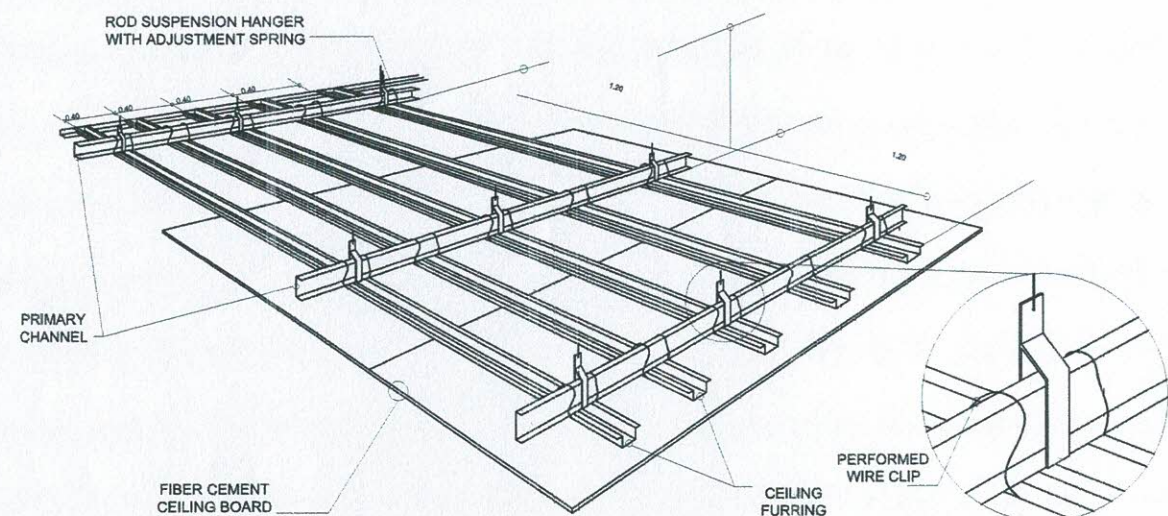
W
2 1.75M x 0.65M in 50 MM WHITE POWDER COATED ALUMINUM CASEMENT WINDOW WITH 6MM THICK CLEAR GLASS COMPLETE ACCESSORIES
12 SETS



W
3 0.55M x 0.15M in 50 MM WHITE POWDER COATED ALUMINUM CASEMENT WINDOW WITH 6MM THICK CLEAR GLASS COMPLETE ACCESSORIES
1 SET

1
A6 SCHEDULE OF DOORS AND WINDOWS
SCALE 1 : 25 MTS.

	PREPARED BY: L. M. ABELLAR IPD	END USER: A. P. FERRER DEAN	REVIEWED BY: E. N. RODEROS JR. ARCHITECT	ENDORSED BY: S. B. BAYOT JR. HEAD	REC. APPROVAL: O. B. DELOS REYES DIRECTOR	APPROVED BY: M. J. D. TEPORA VPPD	APPROVED BY: J. X. B. NEPOMUCENO VPASS	APPROVED BY: H. O. ROBLES PRES	PROJECT TITLE/LOCATION: REPAIR AND IMPROVEMENT OF BEAUTIFUL HOUSE (GRANARY) CAVITE STATE UNIVERSITY MAIN CAMPUS	IMPLEMENTING AGENCY: CAVITE STATE UNIVERSITY SHT NO: A - 6
--	---	--	---	--	--	--	---	---	---	---

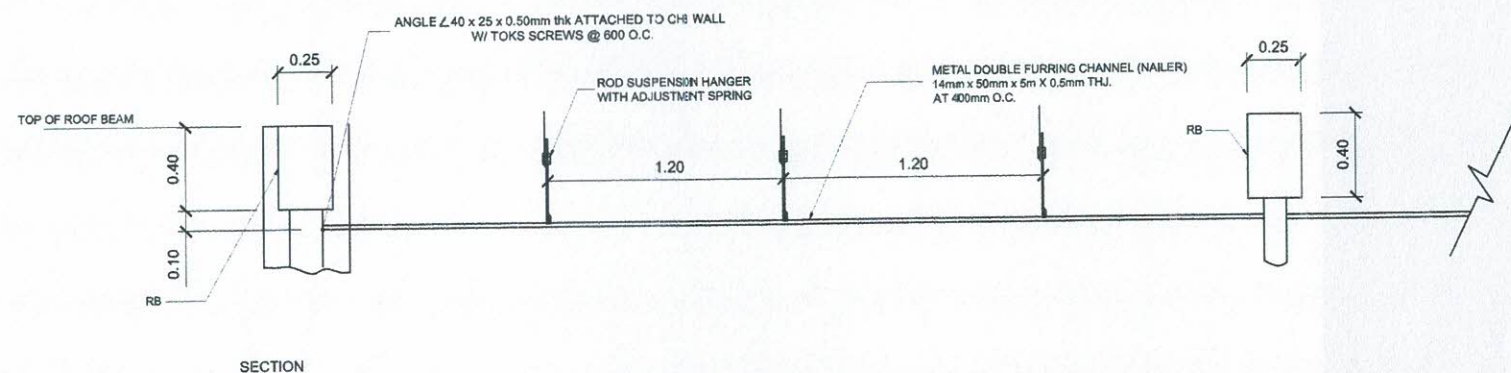


1
A/6

PERSPECTIVE (CEILING)

SCALE

NTS

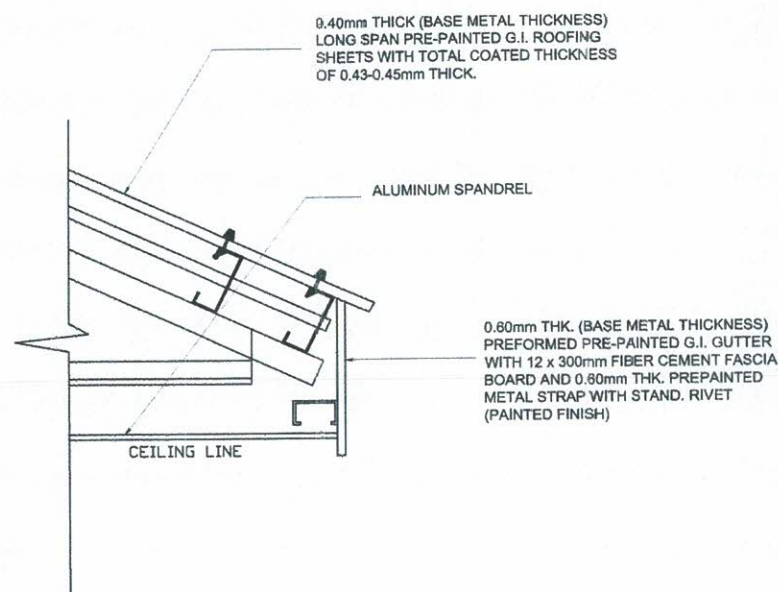


2
A/6

SECTION (CEILING)

SCALE

NTS



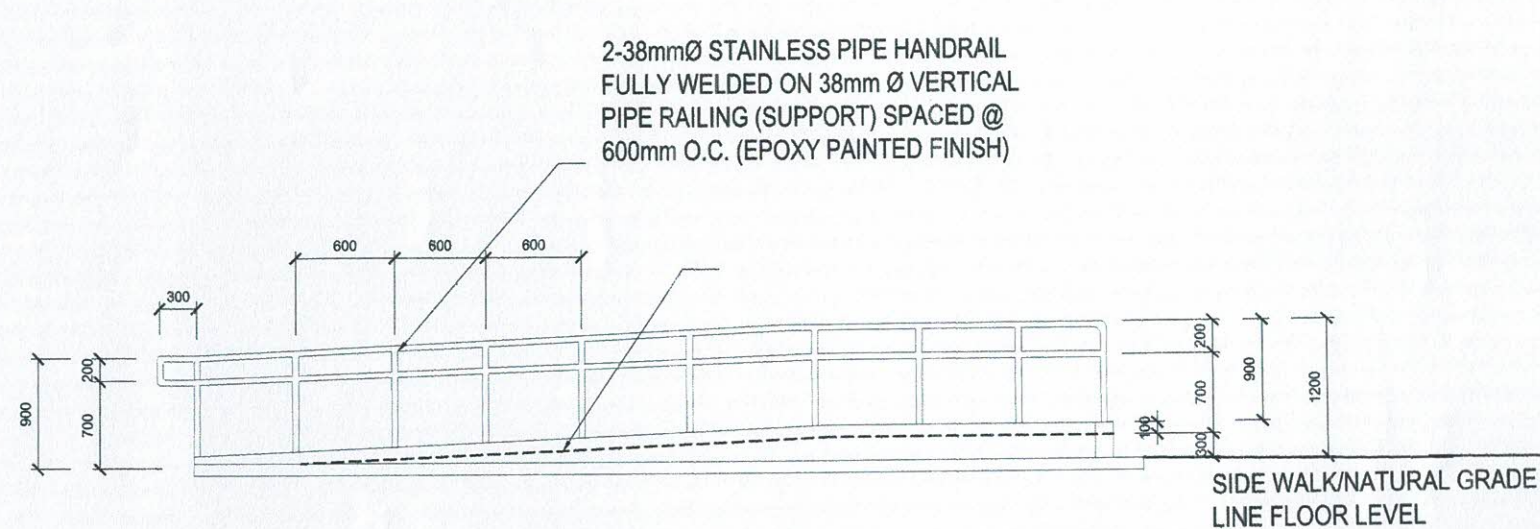
3
A/7

SECTION DETAIL (EAVES)

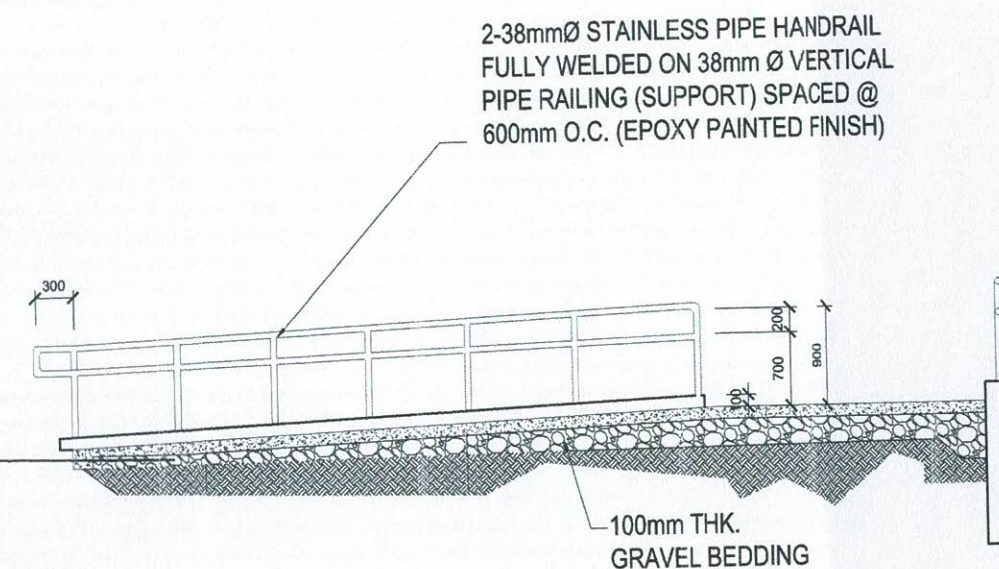
SCALE

NTS

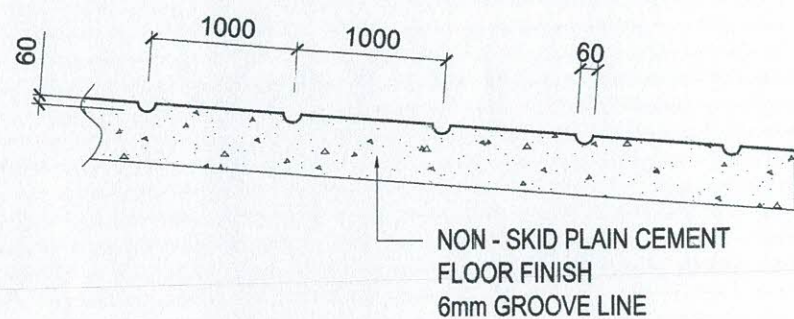
	PREPARED BY: L. M. ABELLAR IRU OVPD	END USER: A. P. FERRER DEAN CED	REVIEWED BY: E. N. RODEROS JR. ARCHITECT	ENDORSED BY: S. B. BAYOT JR. HEAD PDU	ENDORSED BY: G. B. DELOS REYES DIRECTOR PLANNING AND DEVT. OFFICE	REC. APPROVAL: M. J. D. TEPORA VPPD CVSU	 J. X. B. NEPOMUCENO VPASS CVSU	APPROVED BY: H. D. ROBLES PRES CVSU	PROJECT TITLE/ LOCATION: REPAIR AND IMPROVEMENT OF BEAUTIFUL HOUSE (GRANARY) CAVITE STATE UNIVERSITY MAIN CAMPUS	IMPLEMENTING AGENCY: CAVITE STATE UNIVERSITY	SHT NO.: A - 7
--	---	---	--	---	---	--	--	---	--	---	--------------------------



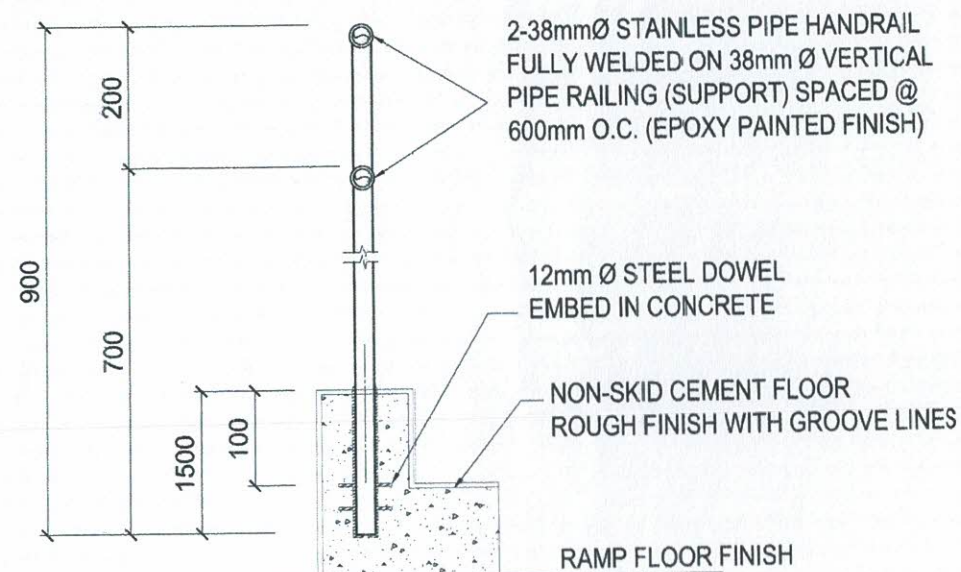
DETAIL ELEVATION OF RAMP



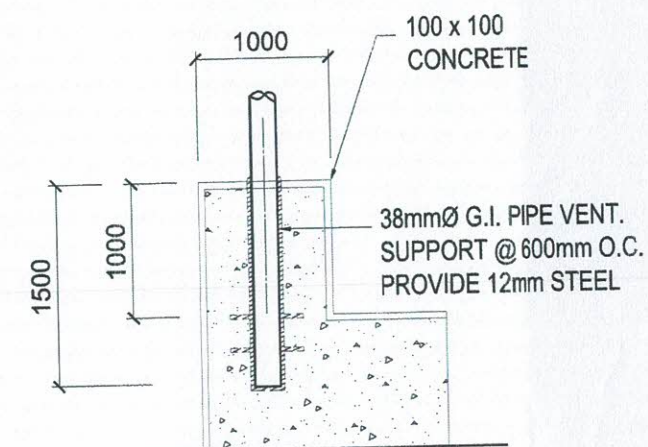
DETAIL SECTION OF RAMP



SPOT DETAIL A



SPOT DETAIL B



SPOT DETAIL C

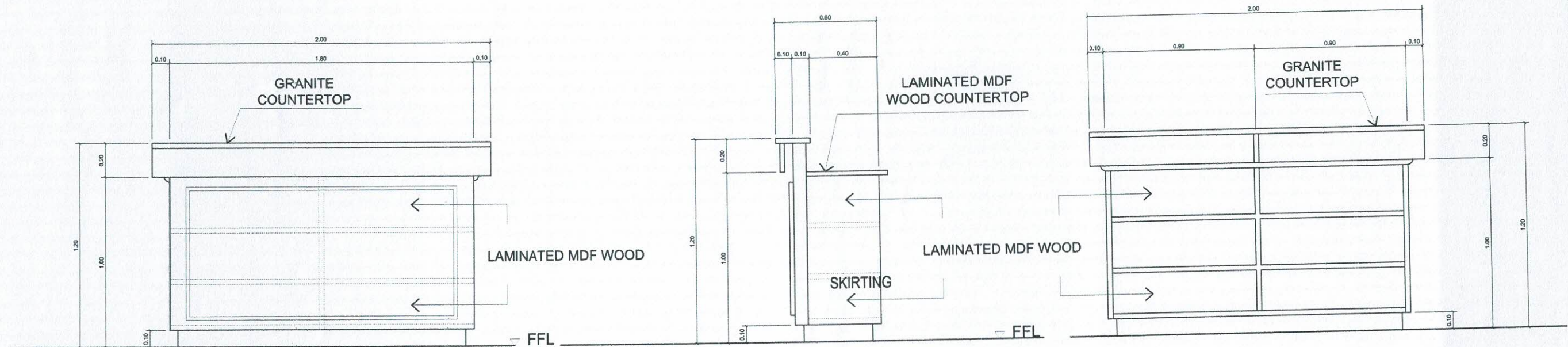


SCALE

DETAIL OF PWD RAMP

NTS.

	PREPARED BY: L. M. ABELLAR IPU	END USER: A. P. FERRER DEAN	REVIEWED BY: E. N. RODEROS JR. ARCHITECT	ENDORSED BY: S. B. BAYOT JR. HEAD	ENDORSED BY: O. B. DELOS REYES DIRECTOR	REC. APPROVAL: M. J. D. TEJERA VPPD	REC. APPROVAL: J. X. B. NEPOMUCENO VPASS	APPROVED BY: H. D. ROBLES PRES	PROJECT TITLE/ LOCATION: REPAIR AND IMPROVEMENT OF BEAUTIFUL HOUSE (GRANARY) CAVITE STATE UNIVERSITY MAIN CAMPUS	IMPLEMENTING AGENCY: CAVITE STATE UNIVERSITY	SHT NO: A - 8
--	--	---------------------------------------	--	---	---	---	--	--	--	--	------------------



DOWELS (PAINTED
FINISH)

NOTE:

THE CONCIERGE TABLE IS MADE OF LAMINATED
MDF WOOD AND GRANITE COUNTER TOP. PLEASE
CONSULT THE END USER FOR THE SELECTION OF
COLOR(S).

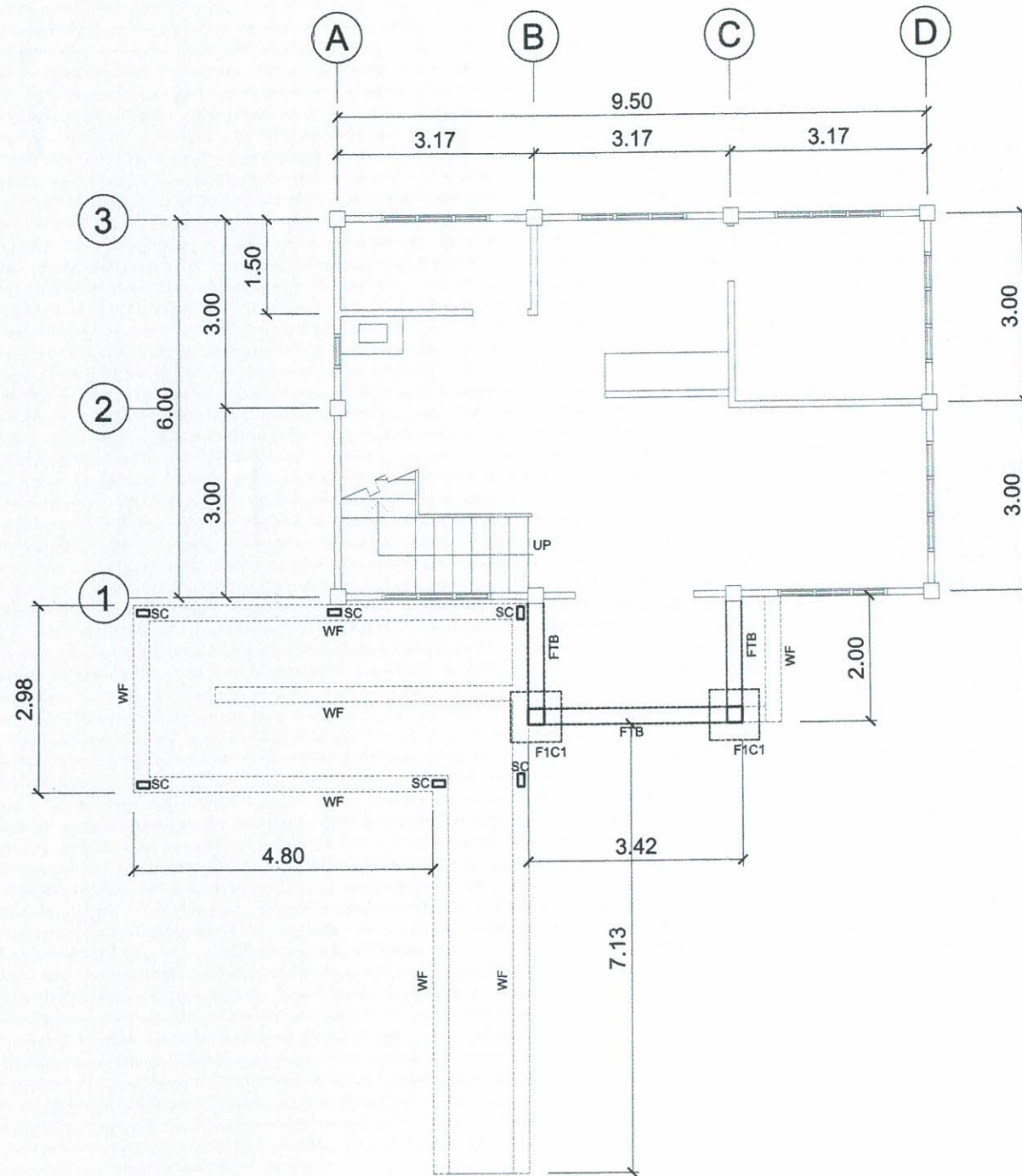
1
A9

CONCIERGE TABLE DETAILS

SCALE

1 : 25 MTS.

	PREPARED BY: L. M. ABELLAR IPU	END USER: A. P. FERRER DEAN	REVIEWED BY: E. N. RODEROS JR. ARCHITECT	ENDORSED BY: S. B. BAYOT JR. HEAD	O. B. DELOS REYES DIRECTOR	REC. APPROVAL: M. J. D. TEPORA VPPD	J. X. B. NEPOMUCENO VPASS	APPROVED BY: H. D. ROBLES PRES	PROJECT TITLE/ LOCATION: REPAIR AND IMPROVEMENT OF BEAUTIFUL HOUSE (GRANARY) CAVITE STATE UNIVERSITY MAIN CAMPUS	IMPLEMENTING AGENCY: CAVITE STATE UNIVERSITY	SHT NO: A - 9
--	--------------------------------------	-----------------------------------	--	---	-------------------------------	---	------------------------------	--------------------------------------	--	--	------------------

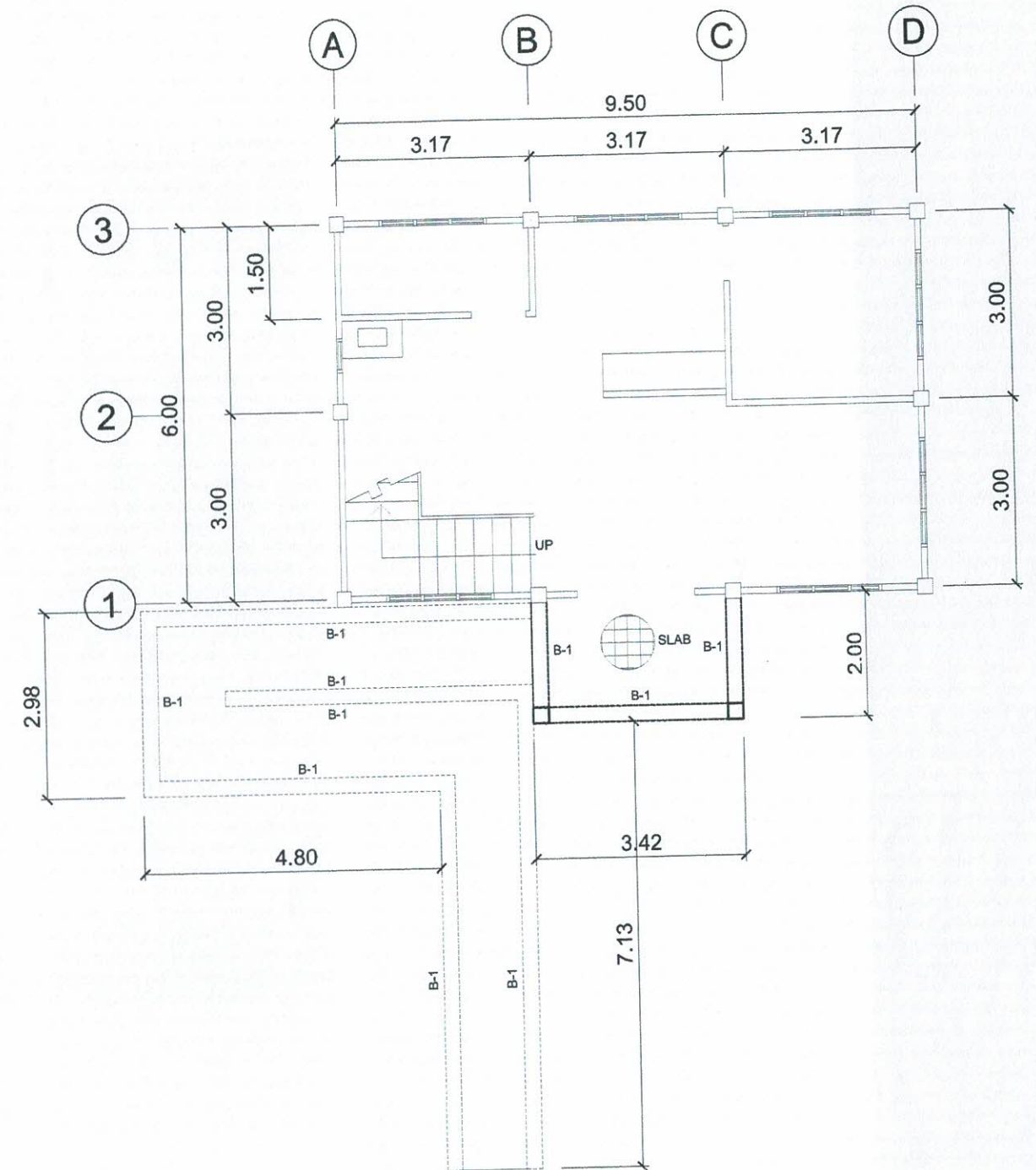


1
S1

FOUNDATION PLAN

SCALE

1 : 100 MTS.



2
S1

BEAM PLAN

SCALE

1 : 100 MTS.

	PREPARED BY: L. M. ABELLAR IPU OVRPPD	END USER: A. P. FERRER DEAN CED	REVIEWED BY: L. E. ROCELA CIVIL ENGINEER	ENDORSED BY: S. B. BAYOT JR. HEAD PDU	REC. APPROVAL: Q. B. DELOS REYES DIRECTOR PLANNING AND DEVT. OFFICE	 M. J. D. TEPORA VPPD CVSU	 J. X. B. NEPOMUCENO VPASS CVSU	APPROVED BY: M. D. ROBLES PRES CVSU	PROJECT TITLE/ LOCATION: REPAIR AND IMPROVEMENT OF BEAUTIFUL HOUSE (GRANARY) CAVITE STATE UNIVERSITY MAIN CAMPUS	IMPLEMENTING AGENCY: CAVITE STATE UNIVERSITY	SHT NO.: S - 1
--	---	---	--	---	---	---	--	---	--	---	--------------------------

BEAM	DIMENSION	SUPPORT		MID-SPAN		BAR ARRANGEMENT		REMARKS	REMARKS
		TOP	BOTTOM	TOP	BOTTOM	SUPPORT	MID-SPAN		
FTB	250mm X 400mm	3-16 MM Ø	3-16 MM Ø	3-16 MM Ø	3-16 MM Ø			10MM Ø STIRRUPS 4 @0.05, 6 @0.075 8 @0.10, REST @ 0.15 O.C.	USE 2-10MM STIFFENER BARS
B-1	200mm X 250mm	2-12 MM Ø	2-12 MM Ø	2-12 MM Ø	2-12 MM Ø			10MM Ø STIRRUPS 4 @0.05, 6 @0.075 8 @0.10, REST @ 0.15 O.C.	USE 2-10MM STIFFENER BARS
RB	200mm X 300mm	3-16 MM Ø	2-16 MM Ø	2-16 MM Ø	3-16 MM Ø			10MM Ø STIRRUPS 4 @0.05, 6 @0.075 8 @0.10, REST @ 0.15 O.C.	USE 2-10MM STIFFENER BARS

LEVEL	DMENSION	REINFORCEMENT	TIES
C-1	250mmx250mm	4-12mmØ GRADE 40	3 SETS OF 10mm Ø TIES @ 2-50mm, 4-75mm, 6-100mm, REST @ 200mm O.C.
SC	150mmx300mm	6-12mmØ GRADE 40	3 SETS OF 10mm Ø TIES @ 2-50mm, 4-75mm, 6-100mm, REST @ 200mm O.C.

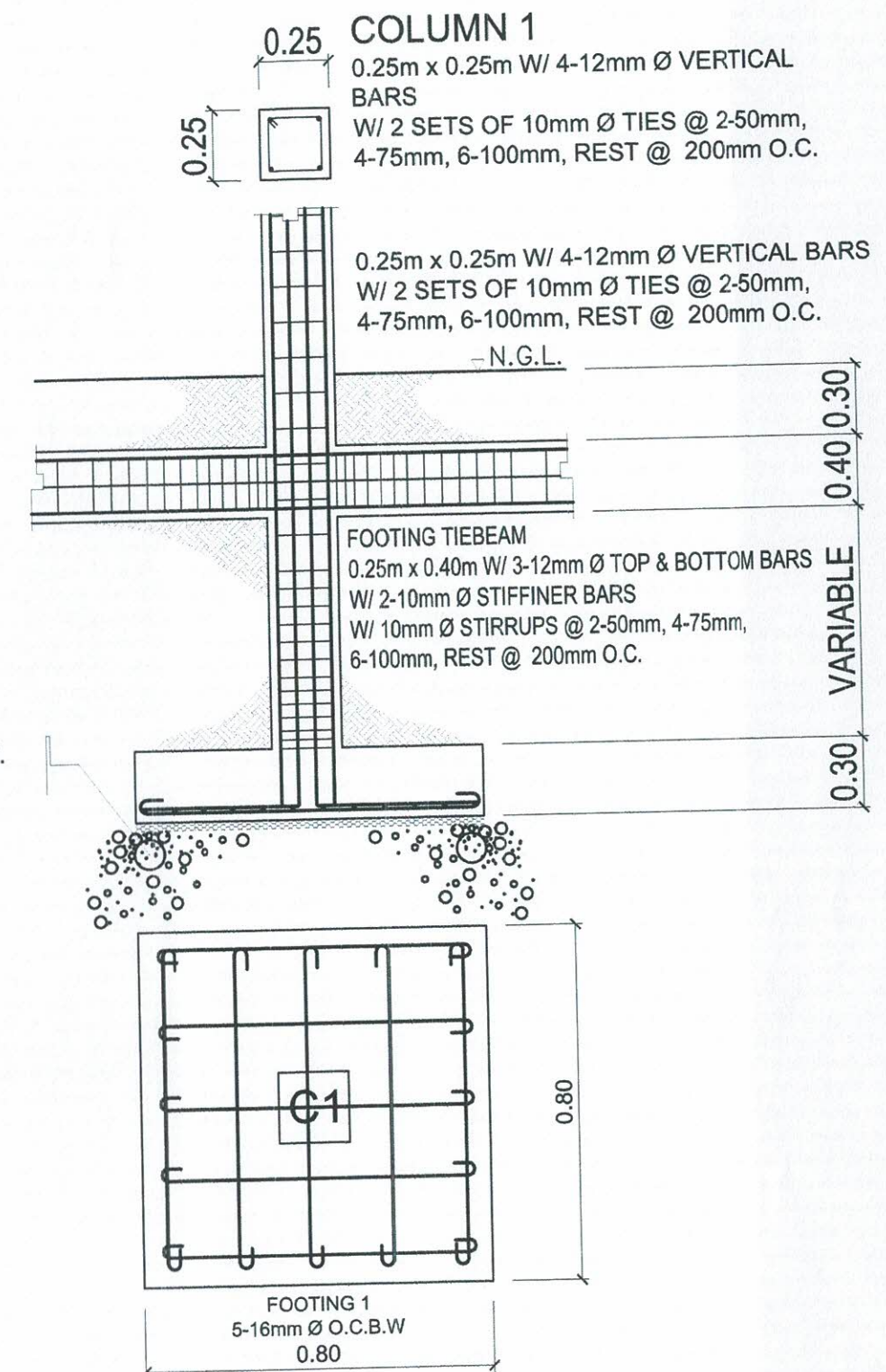


SCHEDULE OF BEAMS AND COLUMN

SCALE

1 : 100 MTS.

PROVIDE 0.05m THK.
GRAVEL FILLING

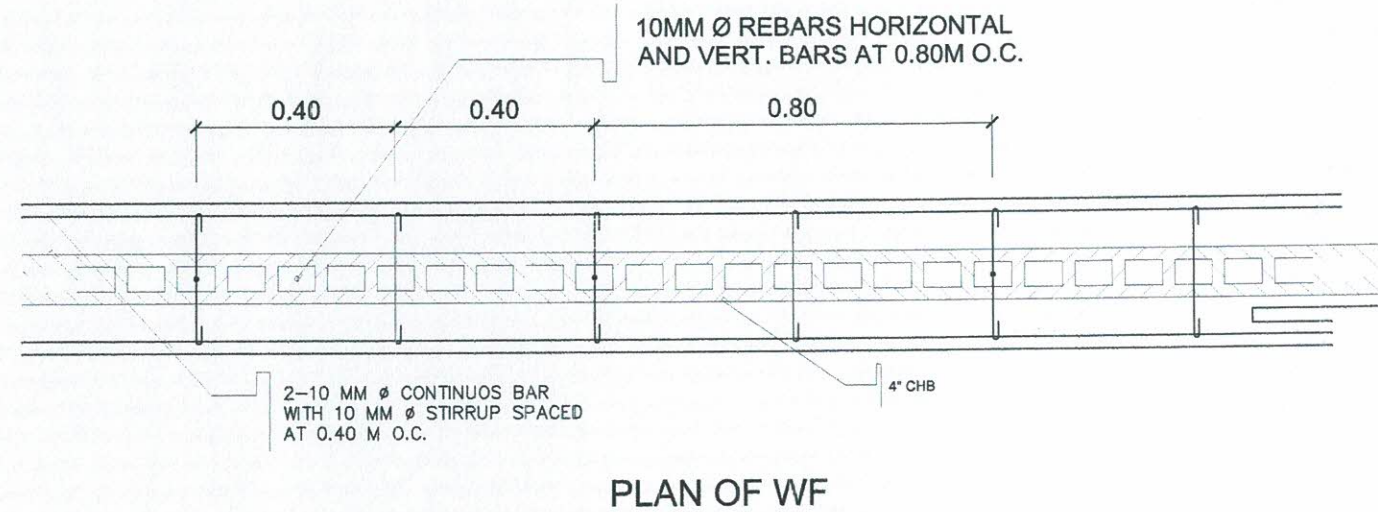
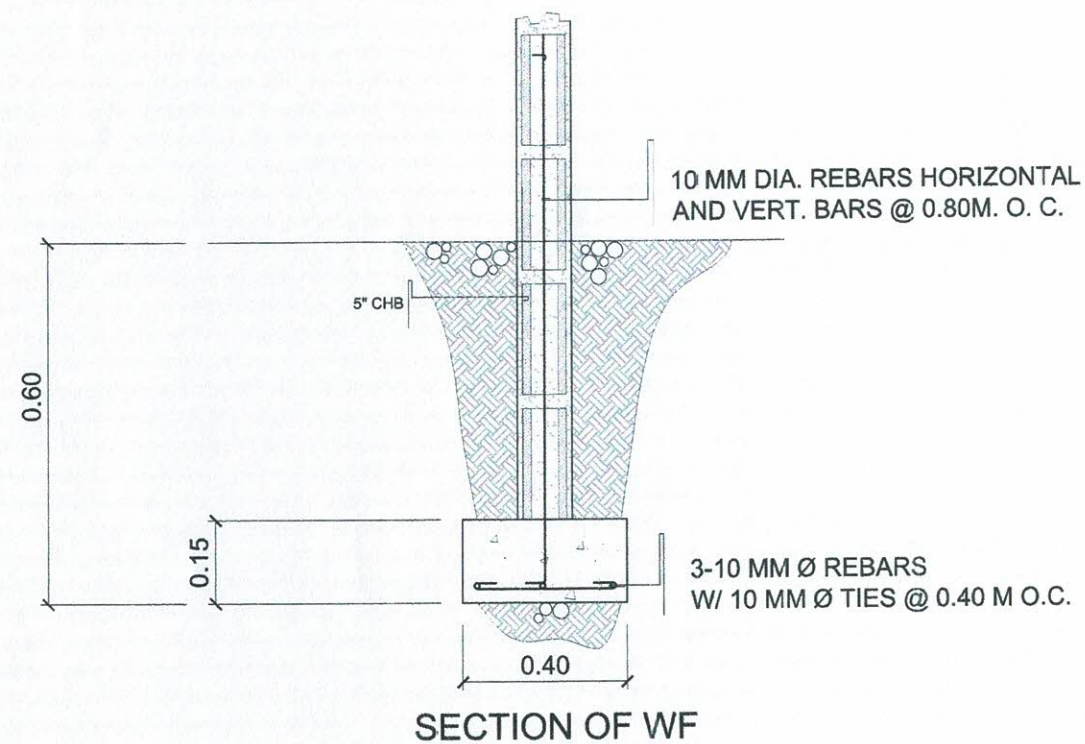


FOUNDATION PLAN

SCALE

1 : 100 MTS.

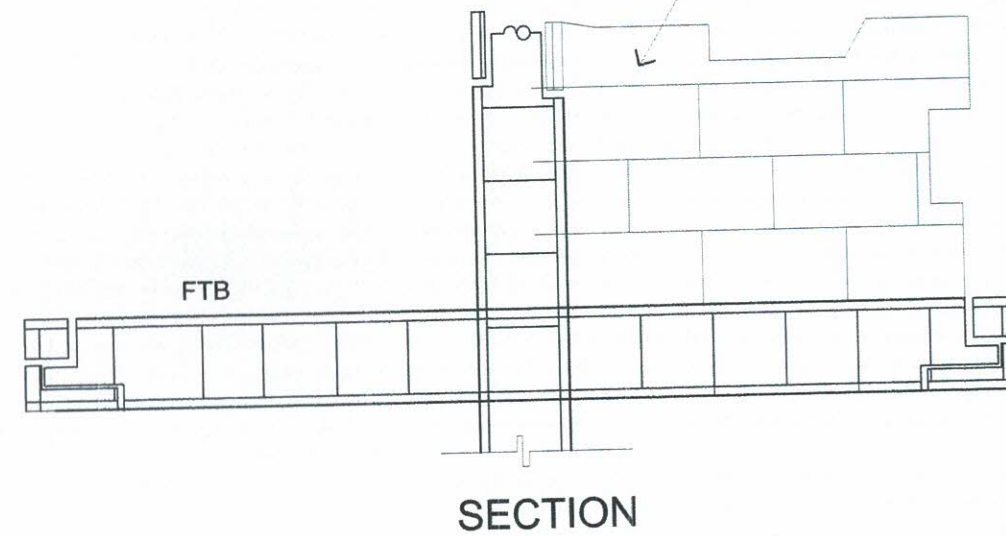
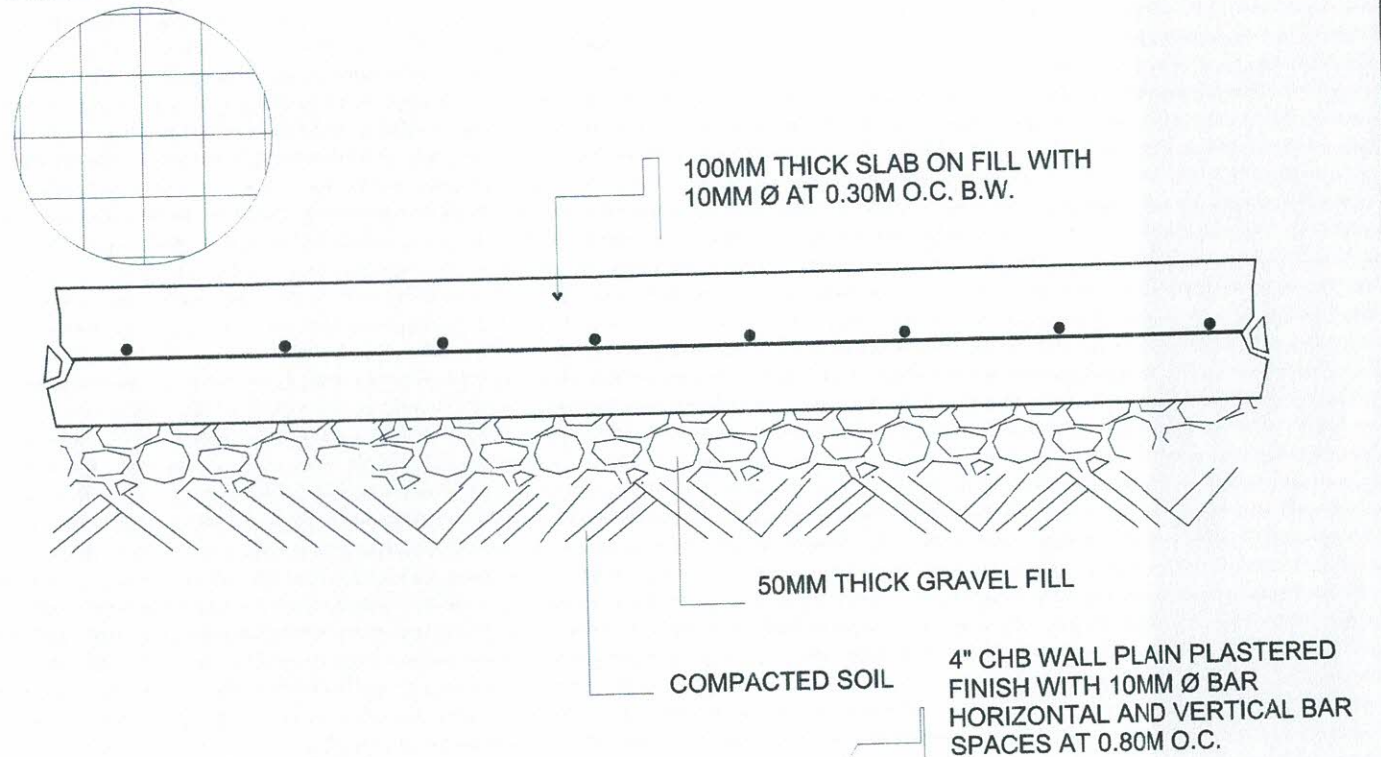
	PREPARED BY:	END USER:	REVIEWED BY:	ENDORSED BY:	REC. APPROVAL:	APPROVED BY:	PROJECT TITLE/ LOCATION:	IMPLEMENTING AGENCY:	SHT NO:
	 L. M. ABELLAR IPU OVPPD	 A. P. FERRER DEAN CED	 L. E. ROCELA CIVIL ENGINEER	 S. B. BAYOT JR. HEAD BDU	 O. B. DELOS REYES DIRECTOR PLANNING AND DEVT. OFFICE	 M. J. D. TEPORA VPASS CVSU	 J. X. B. NEPOMOCENO VPASS CVSU	 H. D. ROBLES PRES CVSU REPAIR AND IMPROVEMENT OF BEAUTIFUL HOUSE (GRANARY) CAVITE STATE UNIVERSITY MAIN CAMPUS	CAVITE STATE UNIVERSITY



1
S3 SCALE 1 : 100 MTS.

DETAIL OF CHB REINFORCEMENT

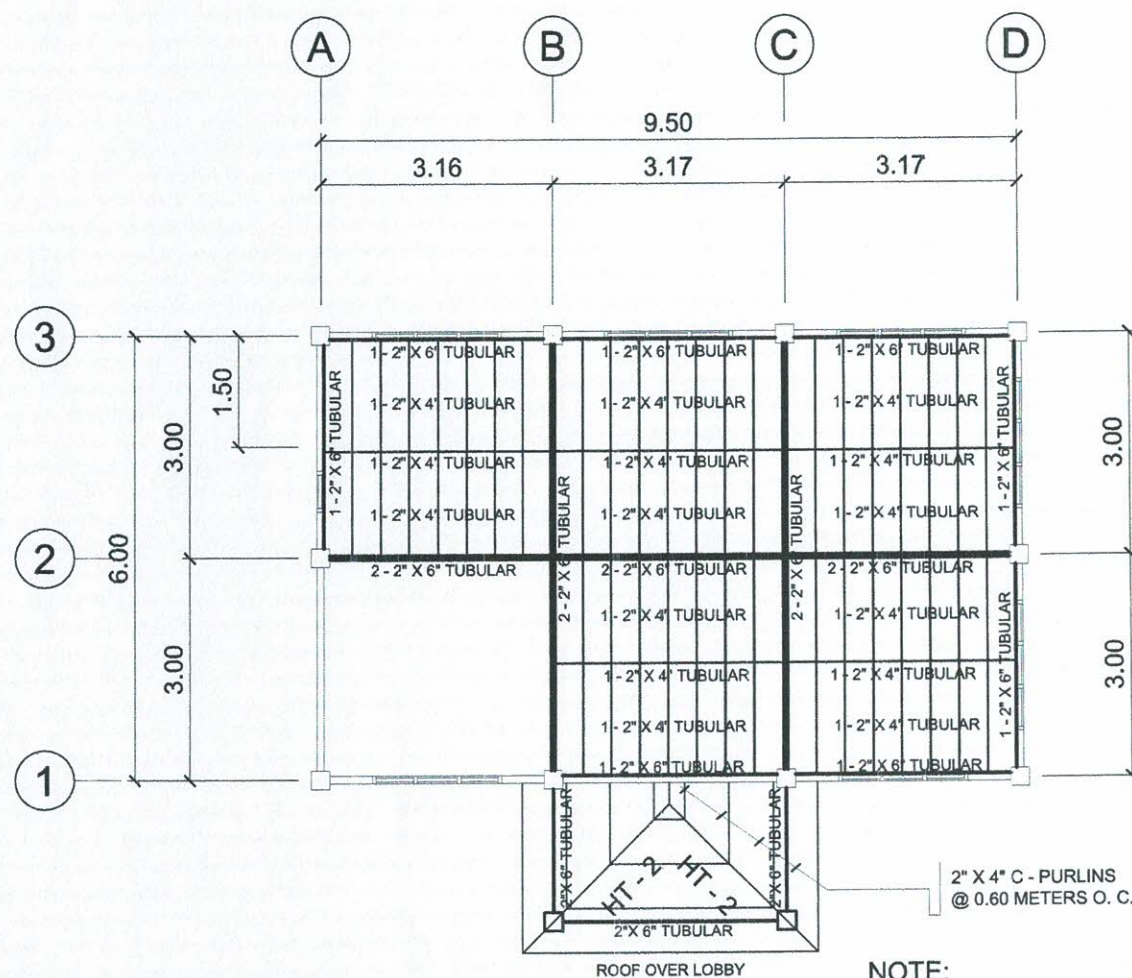
LEGEND:



2
S3 SCALE 1 : 100 MTS.

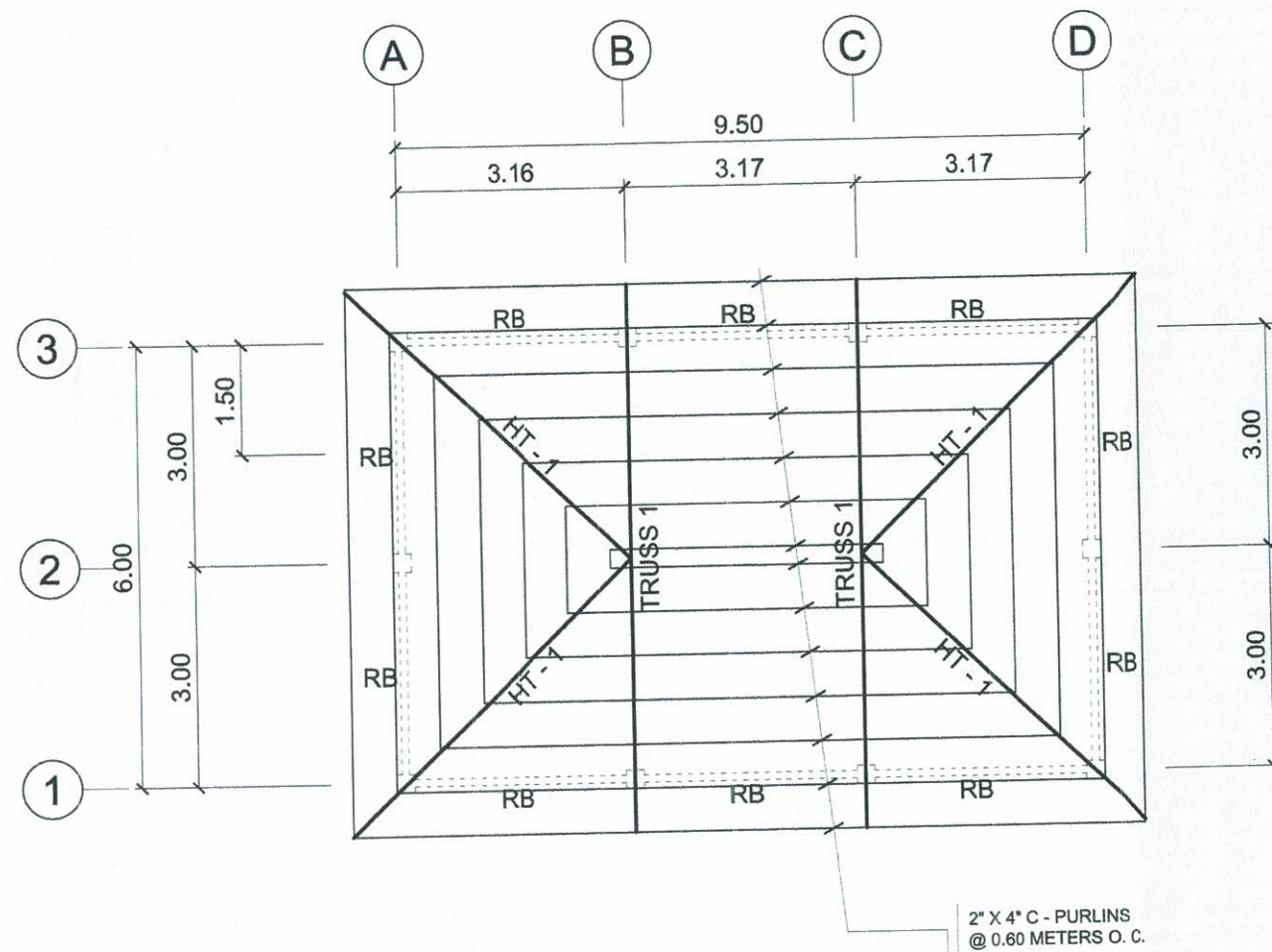
DETAIL OF SLAB

	PREPARED BY: L. M. ABELLAR IPU	END USER: A. P. FERRER DEAN	REVIEWED BY: L. E. ROCELA CIVIL ENGINEER	ENDORSED BY: S. B. BAYOT JR. HEAD	O. B. DELOS REYES DIRECTOR PLANNING AND DEVT. OFFICE	REC. APPROVAL: M. J. D. TEPORA VPPD	J. X. B. NEPOMUCENO VPASS	APPROVED BY: H. D. ROBLES PRES	PROJECT TITLE/LOCATION: REPAIR AND IMPROVEMENT OF BEAUTIFUL HOUSE (GRANARY) CAVITE STATE UNIVERSITY	IMPLEMENTING AGENCY: CAVITE STATE UNIVERSITY	SHT NO: S - 3
--	--------------------------------------	-----------------------------------	--	---	--	---	------------------------------	--------------------------------------	---	---	------------------



1
S4 SCALE 1 : 100 MTS.

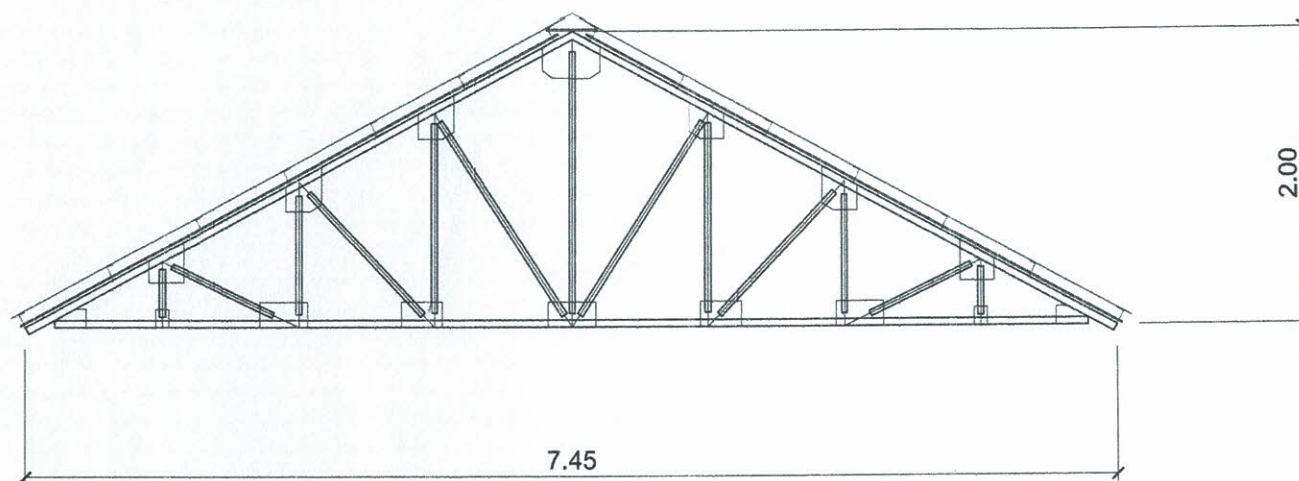
SECOND FLOOR FRAMING PLAN



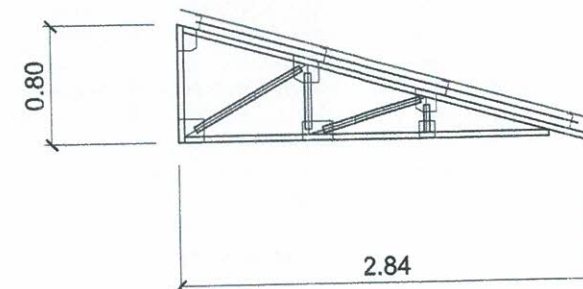
2
S4 SCALE 1 : 100 MTS.

ROOF FRAMING PLAN

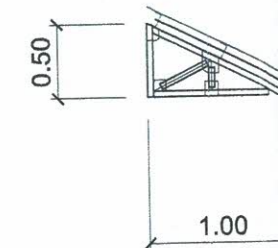
	PREPARED BY: L. M. ABELLAR IPU OVPPD	END USER: A. P. FERRER DEAN CED	REVIEWED BY: L. E. ROCELA CIVIL ENGINEER	ENDORSED BY: S. B. BAYOT JR. HEAD PDU	REC. APPROVAL: O. B. DELOS REYES DIRECTOR PLANNING AND DEVT. OFFICE	APPROVED BY: M. J. D. TEPORA VPPD CVSU	 J. X. B. NEPOMUCENO VPASS CVSU	 H. D. ROBLES PRES CVSU	PROJECT TITLE/ LOCATION: REPAIR AND IMPROVEMENT OF BEAUTIFUL HOUSE (GRANARY) CAVITE STATE UNIVERSITY MAIN CAMPUS	IMPLEMENTING AGENCY: CAVITE STATE UNIVERSITY	SHT NO: S - 4
--	--	---	--	---	---	--	--	--------------------------------------	--	---	-------------------------



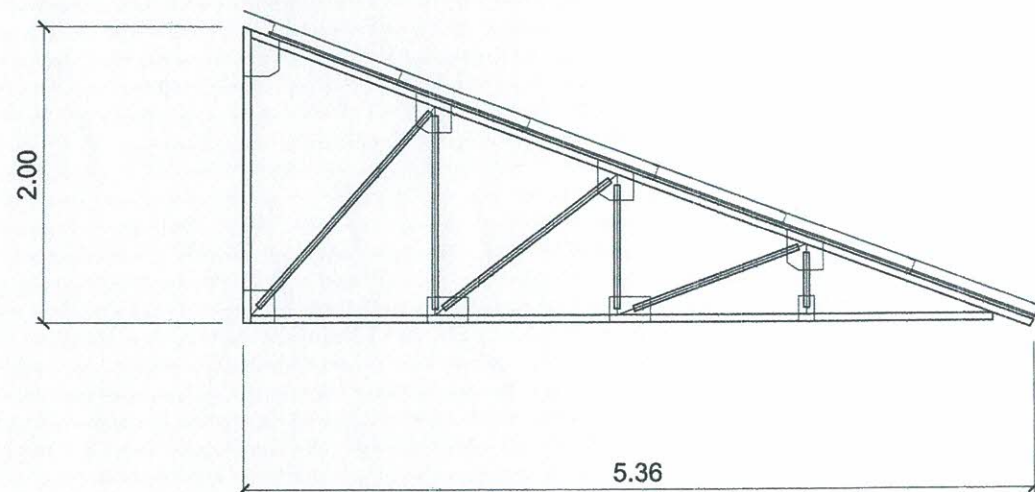
TRUSS 1



HT 2



HT 3
SUN BREAKER



HT 1

FOR TRUSS 1 AND HT 1

BOTTOM CHORD
2 - 2" x 2" x $\frac{1}{4}$ " ANGLE BAR

TOP CHORD
2 - 2" x 2" x $\frac{1}{4}$ " ANGLE BAR

WEB MEMBER
2 - 1 $\frac{1}{2}$ " x 1 $\frac{1}{2}$ " x $\frac{1}{4}$ " ANGLE BAR

USE 2" X 4" C - PURLINS AT 0.60 M O.C.

USE $\frac{1}{4}$ " THICK GUSSET PLATE

PROVIDE 12 MM Ø PLAIN BAR SAGROD

FOR HT 2 AND HT 3

BOTTOM CHORD
1 - 1 $\frac{1}{2}$ " x 1 $\frac{1}{2}$ " x $\frac{1}{4}$ " ANGLE BAR

TOP CHORD
1 - 1 $\frac{1}{2}$ " x 1 $\frac{1}{2}$ " x $\frac{1}{4}$ " ANGLE BAR

WEB MEMBER
1 - 1 $\frac{1}{2}$ " x 1 $\frac{1}{2}$ " x $\frac{1}{4}$ " ANGLE BAR

USE 2" X 4" C - PURLINS AT 0.60 M O.C.

USE $\frac{1}{4}$ " THICK GUSSET PLATE

PROVIDE 12 MM Ø PLAIN BAR SAGROD



SCALE

DETAIL OF TRUSSES

1 : 50 MTS.

	PREPARED BY: L. M. ABELLAR IPU	END USER: A. P. FERRER DEAN	REVIEWED BY: L. E. ROCELA CIVIL ENGINEER	ENDORSED BY: S. B. BAYOT JR. HEAD	O. B. DELOS REYES DIRECTOR PLANNING AND DEVT. OFFICE	REC. APPROVAL: M. J. D. TEOPORA VPPD	J. X. B. NERONUCENO VPASS	APPROVED BY: H. D. ROBLES PRES	PROJECT TITLE/ LOCATION: REPAIR AND IMPROVEMENT OF BEAUTIFUL HOUSE (GRANARY) CAVITE STATE UNIVERSITY MAIN CAMPUS	IMPLEMENTING AGENCY: CAVITE STATE UNIVERSITY	SHT NO: S - 5
--	--------------------------------------	-----------------------------------	--	---	--	--	------------------------------	--------------------------------------	--	--	------------------

GENERAL NOTES AND SPECIFICATIONS:

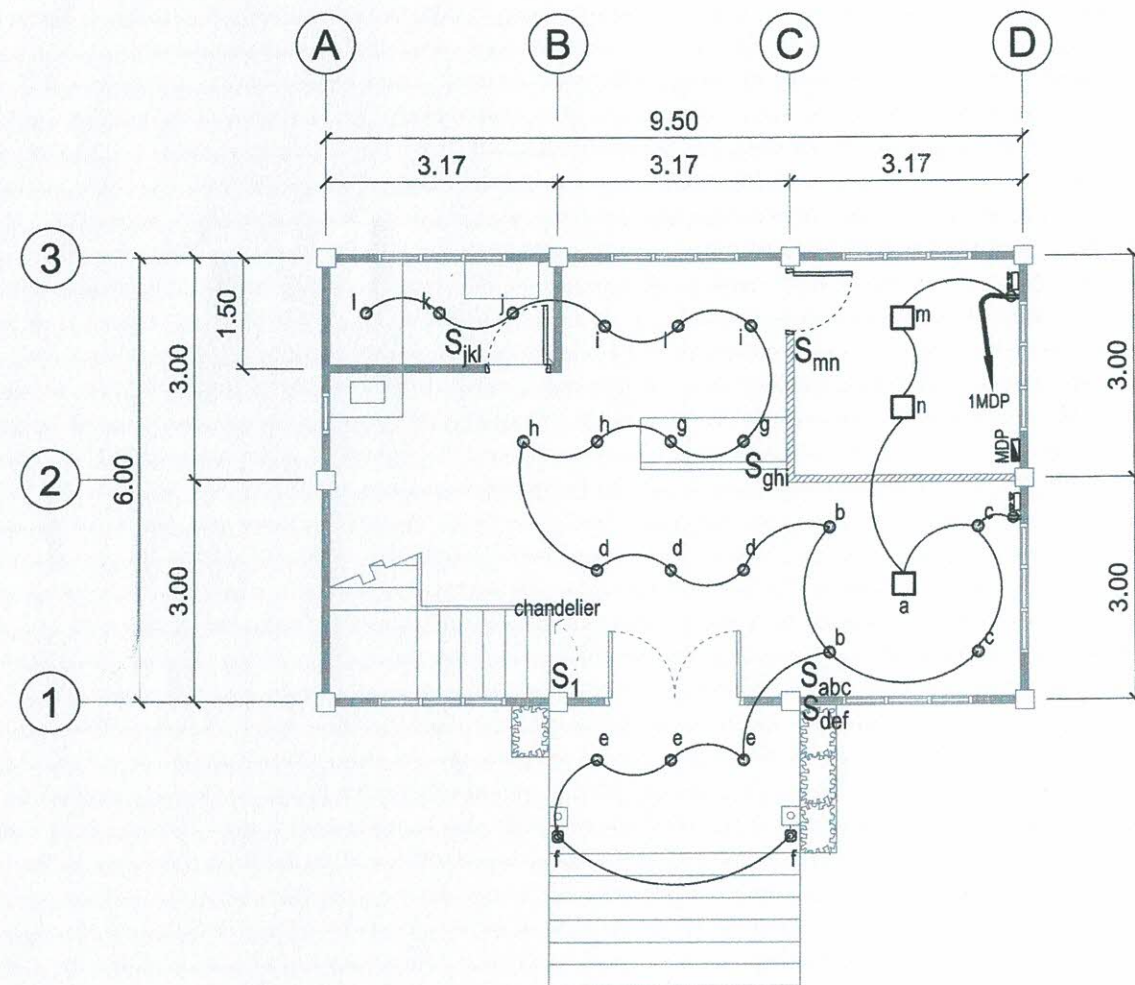
1. ALL WORK HEREIN SHALL BE DONE IN ACCORDANCE WITH THE PLANS AND SPECIFICATIONS.
2. ELECTRICAL WORKS SHALL BE IN ACCORDANCE WITH THE LATEST EDITION OF THE PHILIPPINE ELECTRICAL CODE, MUNICIPAL/CITY LAWS AND ORDINANCES AND THE REGULATIONS OF THE LOCAL POWER AND TELEPHONE COMPANY.
3. THE JOB SHALL BE EXECUTED IN THE MOST THOROUGH PROMPT AND WORKMANLIKE MANNER EMPLOYING STANDARD TOOLS, EQUIPMENT, METHODS AND GOOD ENGINEERING PRACTICE. THE JOB SHALL BE DONE IN ALL ASPECTS AS REQUIRED PER PLANS AND SPECIFICATIONS AND READY FOR OPERATION.
4. THE DRAWINGS AND SPECIFICATIONS ARE INTENDED TO PRESENT A GENERAL LAYOUT AND BROAD OUTLINE/DESCRIPTION OF THE PROJECT, BUT DO NOT NECESSARILY INDICATE OR DESCRIBE ACTUAL LOCATIONS, LEVELS AND DISTANCES OF THE EQUIPMENT. THE CONTRACTOR IS HEREBY REQUIRED TO MAKE SUCH ADJUSTMENTS AT THE JOBSITE THAT ARE GOVERNED BY ACTUAL FIELD CONDITION.
5. SERVICE VOLTAGE TO THE BUILDING FROM THE POWER SOURCE SHALL BE 230V.
6. SERVICE ENTRANCE WIRING SHALL BE RIGID STEEL CONDUIT (RSC).
7. FEEDER WIRING SHALL BE ELECTRICAL METALLIC TUBING (EMT).
8. BRANCH CIRCUIT WIRING ELECTRICAL METALLIC TUBING (EMT).
9. BRANCH CIRCUIT WIRING EMBEDDED IN CONCRETE SHALL BE IN PVC PIPE WITH ADEQUATE GROUND WIRE FOR EQUIPMENT GROUNDING.
10. LIGHT SWITCHES SHALL BE 15A, 230VAC.
11. ALL MATERIALS SHALL BE BRAND NEW AND OF APPROVED TYPE FOR LOCATION AND PURPOSE INTENDED.
12. DEVICES, FIXTURES LOCATED OUTDOOR SHALL BE WEATHERPROOF TYPE.
13. MOUNTING HEIGHTS ARE:

A. LIGHT SWITCHES	1.40M ABOVE FLOOR FINISH
B. CONVENIENCE OUTLETS	0.30M ABOVE FLOOR FINISH
C. COUNTER TOP C.O.	0.40M TO .50M ABOVE THE COUNTER
D. TELEPHONE OUTLETS	0.30M ABOVE FLOOR FINISH
E. PANEL BOARD	1.50M ABOVE FLOOR FINISH
F. EMERGENCY LIGHT	0.30M BELOW CEILING LINE
14. ANY DISCREPANCY BETWEEN THE PLANS AND SPECIFICATIONS SHALL BE BROUGHT TO THE ATTENTION OF THE ENGINEER FOR CLARIFICATION OR DECISION.
15. THE ENTIRE WORK SHALL BE DONE UNDER THE DIRECT SUPERVISION OF DULY REGISTERED ELECTRICAL ENGINEER.
16. REFER TO SHEETS E-2 TO E-4 FOR EXACT NUMBER AND LOCATION OF DEVICES/EQUIPMENT FOR ELECTRICAL SYSTEM. ANY CONFLICT ON QUANTITY AND/OR LAYOUT MUST BE VERIFIED AND CONFIRMED TO DESIGNER/CONSULTANT.
17. REFER TO LOAD SCHEDULE FOR THE RATING OF INDIVIDUAL ENCL, ACB'S IN NEMA-3R.
18. ALL ELECTRICAL CONDUITS AND TELEPHONE SERVICE ENTRANCE THAT INSTALLED BELOW THE GROUND SHALL BE IN CONCRETE ENCASEMENT.
19. ANY DEVICES OR EQUIPMENT NOT REFLECTED OR SHOWN ON PLANS BUT REQUIRED TO COMPLETE THE SYSTEM MUST BE INCLUDED ON SCOPE OF WORK.
20. REQUEST FOR TEMPORARY POWER INTERRUPTION SHOULD BE COORDINATED TO OWNER'S REPRESENTATIVE OR DESIGNER.
21. THE SIZE OF GENERATOR IS 40% OF THE TOTAL VA LOAD. THIS IS INTENDED TO SUPPLY ELECTRIC POWER FOR LIGHTINGS AND OTHER IMPORTANT APPLIANCES DURING THE POWER INTERRUPTION OF MAIN POWER SOURCE.

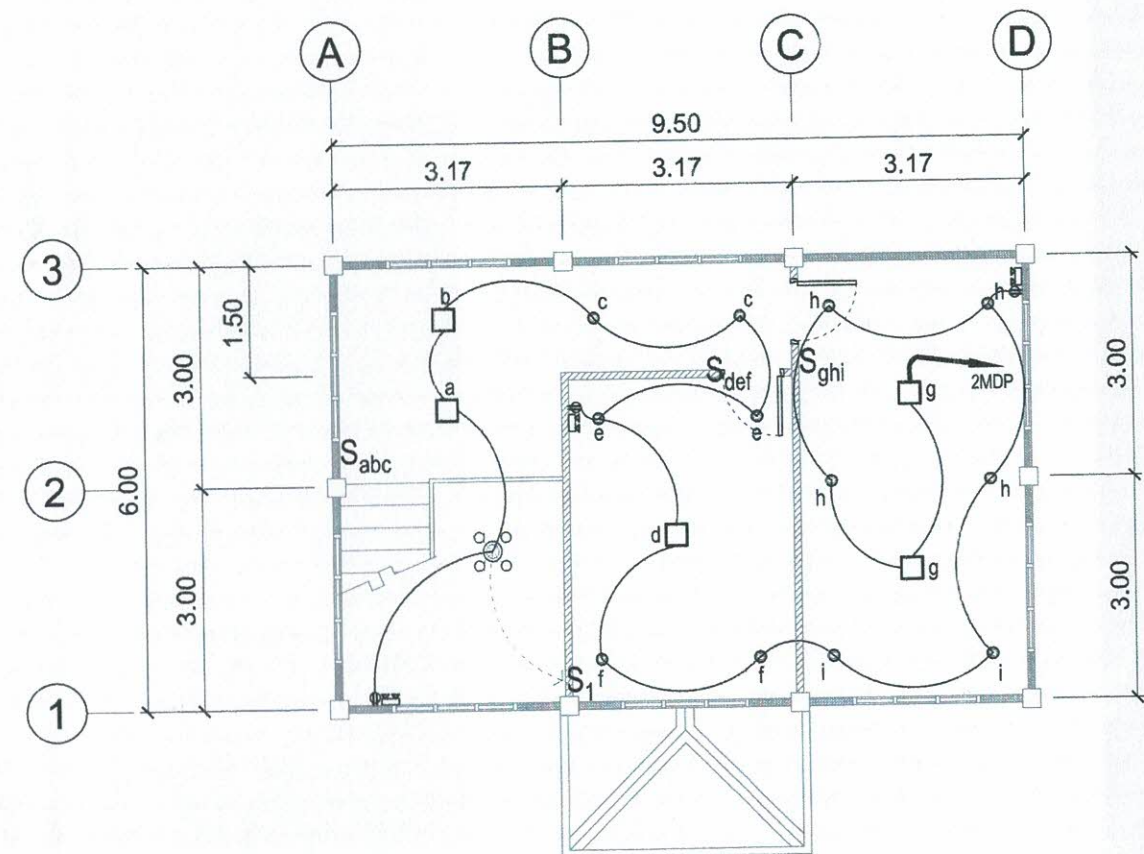
LEGEND AND SYMBOLS :

	LED PANEL LIGHT, ROUND, 3W		CIRCUIT BREAKER WITH NEMA 3R METAL ENCLOSURE
	LED WALL LAMP, 2-7W		ACU CONDENSER OUT DOOR UNIT WITH NEMA 3R CIRCUIT BREAKER
	LED PANEL LIGHT, SQUARE, 20W		ACU WALL/FLOOR MOUNTED, SPLIT TYPE, INDOOR UNIT
	LED STEP STAIR LAMP, RECESSED TYPE, 3W		2.0 mm ² THHN
	CHANDELIER TYPE LIGHTING		3.5 mm ² THHN
	EMERGENCY LIGHT (EL)		CIRCUIT HOMERUN
	ONE GANG SWITCH		CIRCUIT NUMBER
	TWO GANG SWITCH		PANEL BOARD
	THREE GANG SWITCH		SERVICE ENTRANCE
	THREE WAY SWITCH		KILOWATT HOUR METER
	TWO GANG CONVENIENCE OUTLET		CONCRETE ENCASEMENT
	COUNTER-TOP TWO GANG CONVENIENCE OUTLET		CABLE CHAMBER
	TWO GANG CONVENIENCE OUTLET (FLOOR MOUNTED)		DISTRIBUTION TRANSFORMER
	TWO GANG SPECIAL POWER OUTLET		PRIMARY CONCRETE POLE
	TWO GANG SPECIAL POWER OUTLET (FLOOR MOUNTED)		SERVICE ENTRANCE PEDESTAL WITH DISCONNECTING SWITCH
	THREE PIN ACU OUTLET		SECONDARY LINE
	ACU WINDOW TYPE		

	PREPARED BY:	END USER:	REVIEWED BY:	ENDORSED BY:	REC. APPROVAL:	APPROVED BY:	PROJECT TITLE/ LOCATION:	IMPLEMENTING AGENCY:	SHT NO:
	R. J. R. SANCHEZ PCU OVPPD	A. P. FERRER DEAN CED	R. P. PERA PROFESSIONAL ELECTRICAL ENGR.	S. B. BAYOT JR. HEAD PCU	O. B. DELOS REYES DIRECTOR PLANNING AND DEVT. OFFICE	M. J. D. TEPORA VPPD CVSU	J. X. B. NERONCENO VPASS CVSU	H. D. ROBLES PRES CVSU	REPAIR AND IMPROVEMENT OF BEAUTIFUL HOUSE (GRANARY) CAVITE STATE UNIVERSITY MAIN CAMPUS

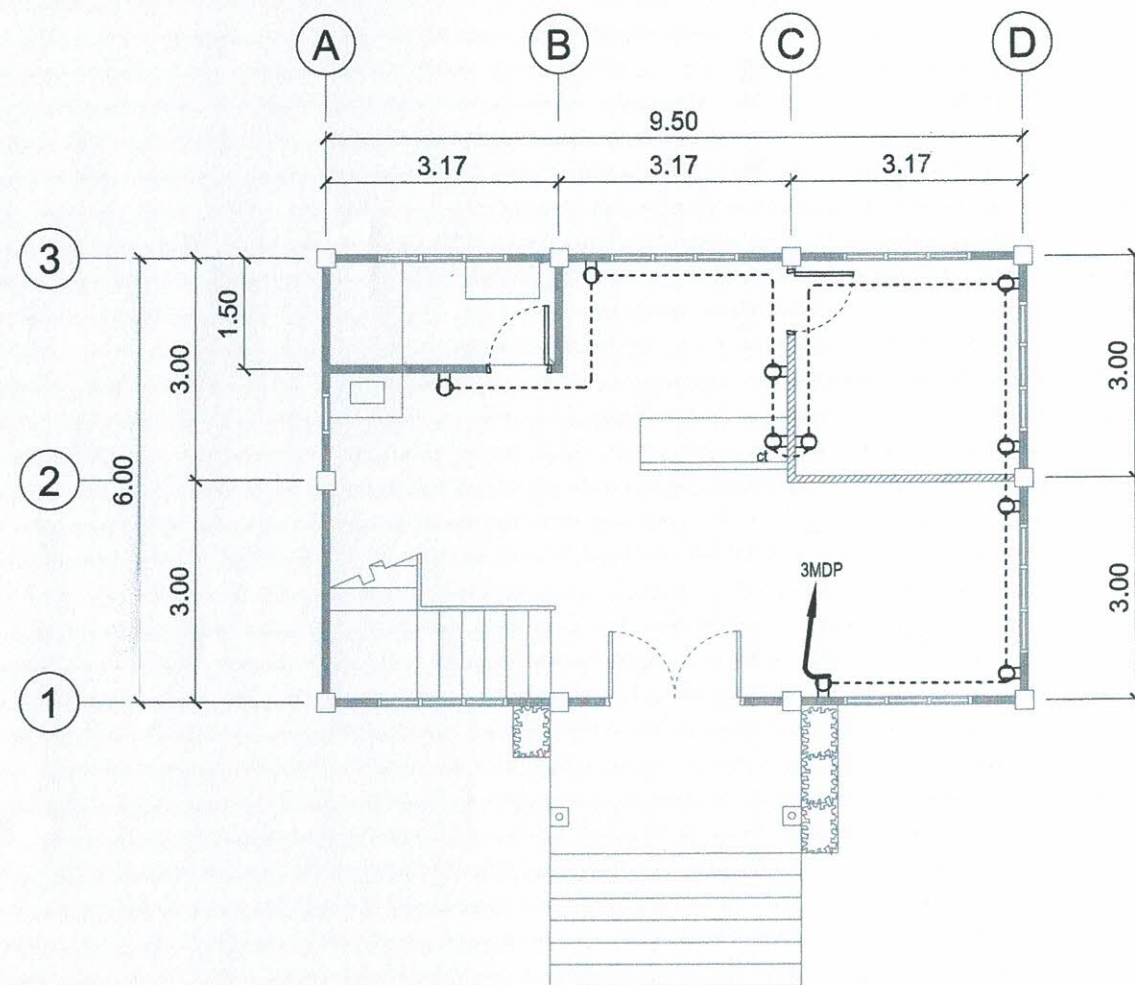


1
E2 SCALE
GROUND FLOOR LIGHTING LAYOUT
1 : 100 MTS.

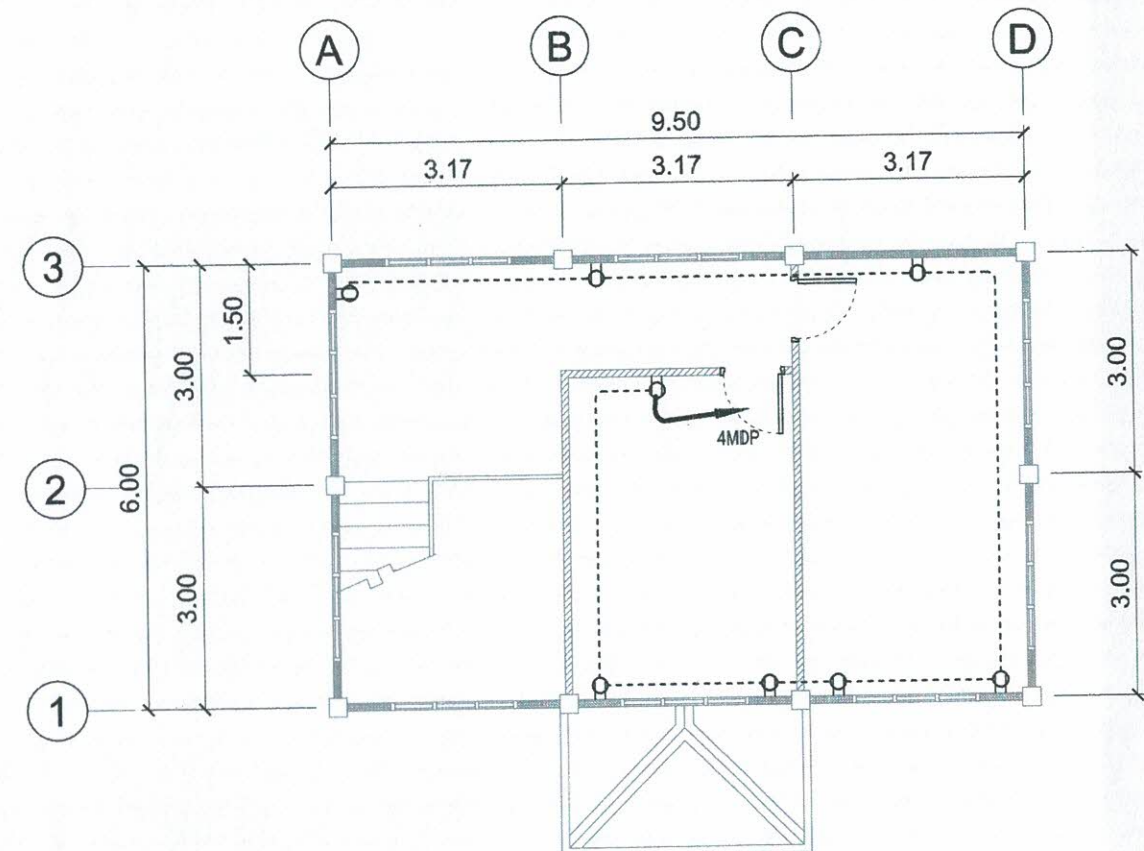


2
E2 SCALE
SECOND FLOOR LIGHTING LAYOUT
1 : 100 MTS.

	PREPARED BY:	END USER:	REVIEWED BY:	ENDORSED BY:	REC. APPROVAL:	APPROVED BY:	PROJECT TITLE/ LOCATION:	IMPLEMENTING AGENCY:	SHT NO:
	R. J. R. SANCHEZ PDU VPDP	A. P. FERRER DEAN CED	R. P. PENA PROFESSIONAL ELECTRICAL ENGR. HEAD	S. B. BAYOT JR. PDU	O. B. DELOS REYES DIRECTOR PLANNING AND DEVT. OFFICE	M. J. D. TEPORA VPPD CVSU	J. X. B. NERCOMUCENO VPASS CVSU	H. D. ROBLES PRES CVSU	REPAIR AND IMPROVEMENT OF BEAUTIFUL HOUSE (GRANARY) CAVITE STATE UNIVERSITY MAIN CAMPUS

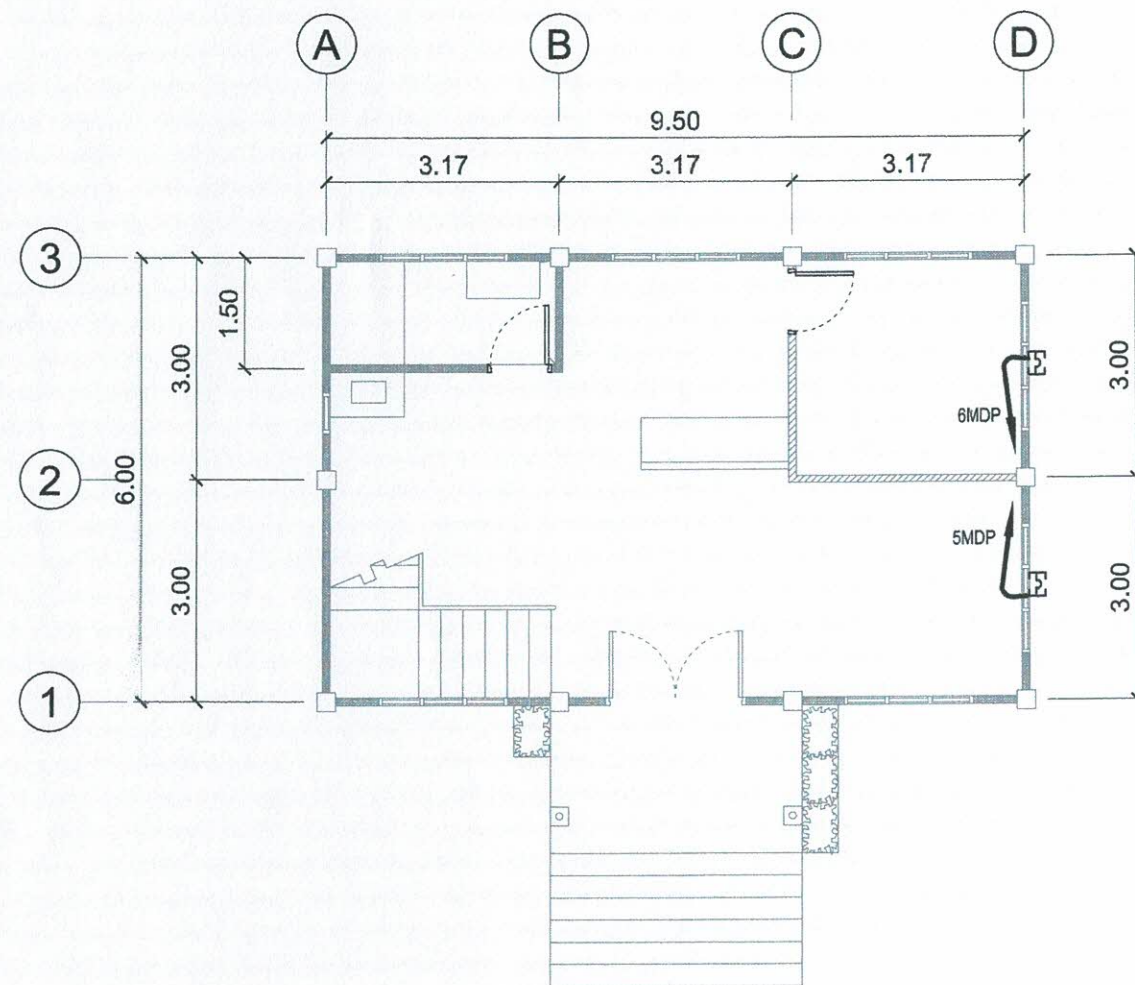


1 GROUND FLOOR POWER OUTLET LAYOUT
E3 SCALE 1 : 100 MTS.

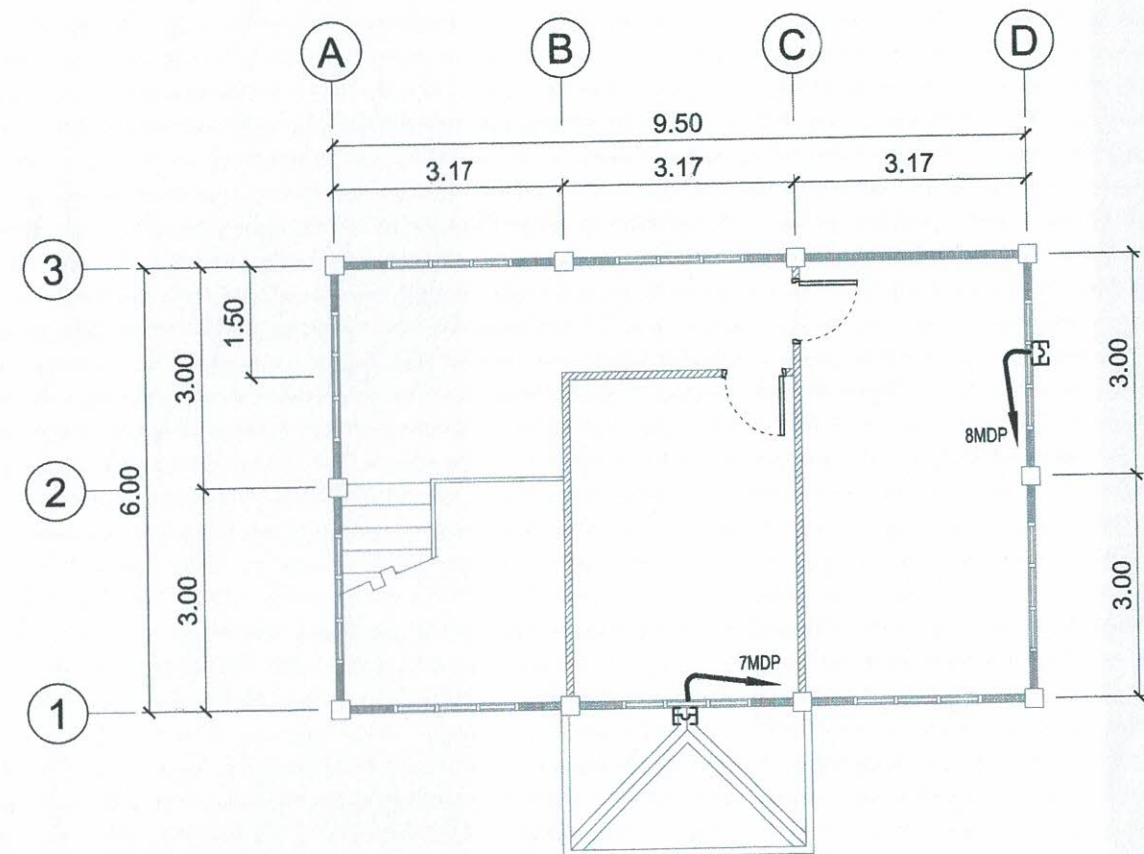


2 SECOND FLOOR POWER OUTLET LAYOUT
E3 SCALE 1 : 100 MTS.

	PREPARED BY: R. J. R. SANCHEZ PDU	END USER: A. P. FERRER DEAN	REVIEWED BY: R. P. PERA PROFESSIONAL ELECTRICAL ENGR.	ENDORSED BY: S. B. BAYOT JR. HEAD	O. B. DELOS REYES DIRECTOR PLANNING AND DEVT. OFFICE	REC. APPROVAL: M. J. D. TEOPORA VPPD	J. X. B. NEPOMUCENO VPASS	APPROVED BY: H. D. ROBLES PRES	PROJECT TITLE/LOCATION: REPAIR AND IMPROVEMENT OF BEAUTIFUL HOUSE (GRANARY) CAVITE STATE UNIVERSITY MAIN CAMPUS	IMPLEMENTING AGENCY: CAVITE STATE UNIVERSITY	SHT NO: E - 3
--	---	-----------------------------------	---	---	--	--	------------------------------	--------------------------------------	---	--	------------------

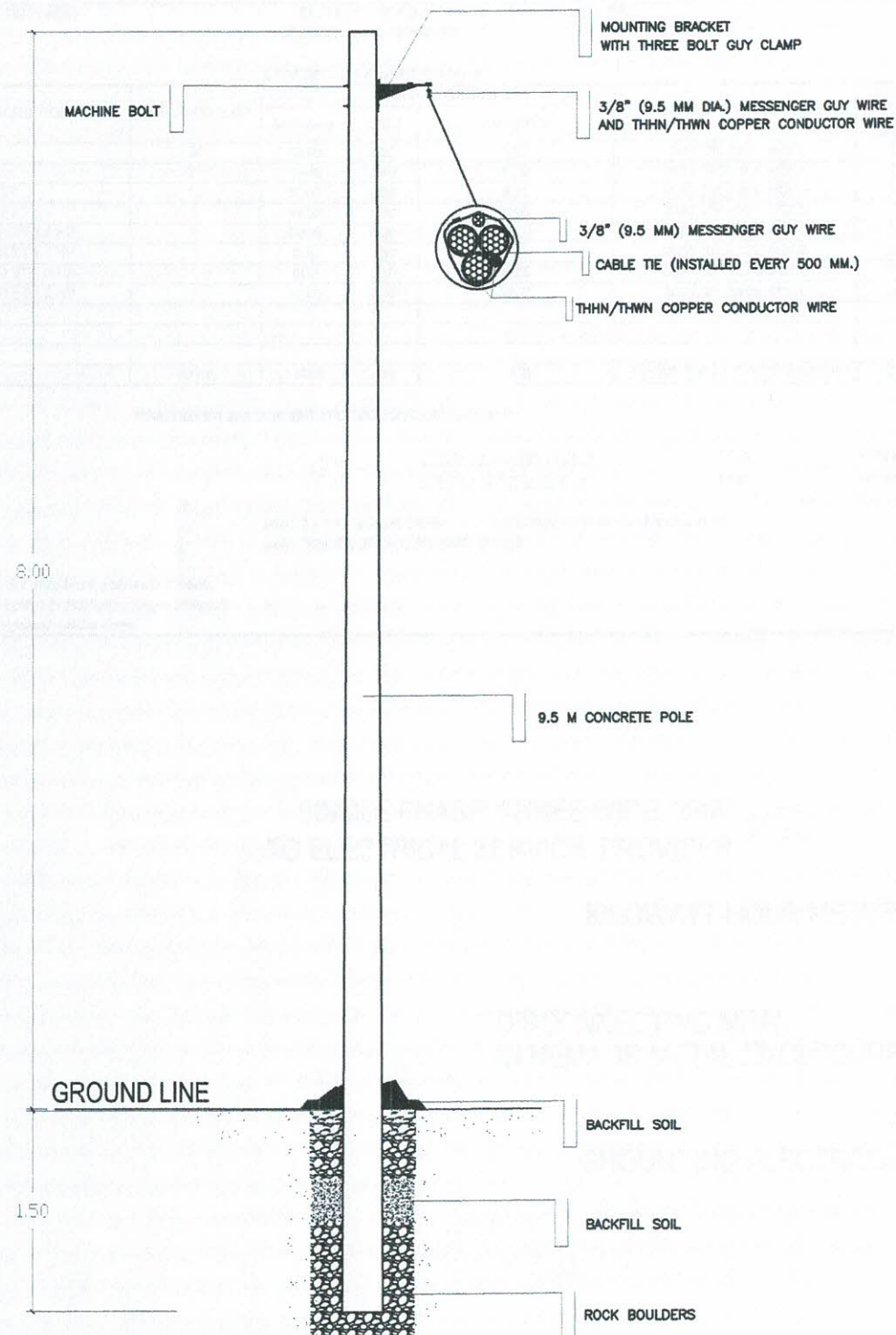


1
E4 SCALE 1 : 100 MTS.
GROUND FLOOR ACU OUTLET LAYOUT



2
E4 SCALE 1 : 100 MTS.
SECOND FLOOR ACU OUTLET LAYOUT

	PREPARED BY:	END USER:	REVIEWED BY:	ENDORSED BY:	REC. APPROVAL:	APPROVED BY:	PROJECT TITLE/ LOCATION:	IMPLEMENTING AGENCY:	SHT NO:
	 R. J. R. SANCHEZ POU VPPD	 A. P. FERRER DEAN CED	 R. P. PENA PROFESSIONAL ELECTRICAL ENGR.	 S. B. BAYOT JR. HEAD POU	 O. B. DELOS REYES DIRECTOR PLANNING AND DEVT. OFFICE	 M. I. D. TEPORA VPPD CVSU	 J. X. B. NERON VPASS CVSU	 H. D. ROBLES PRES CVSU REPAIR AND IMPROVEMENT OF BEAUTIFUL HOUSE (GRANARY) CAVITE STATE UNIVERSITY MAIN CAMPUS	CAVITE STATE UNIVERSITY

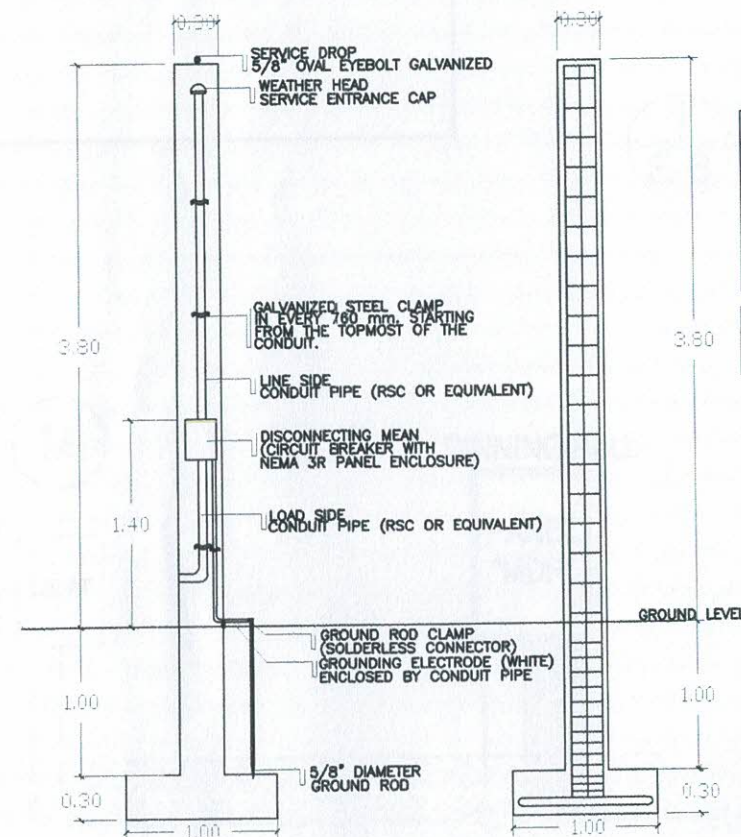


1 SECONDARY CONCRETE POLE DETAILS

1
E/5

SCALE

1 : 50 MTS.



**2 SERVICE ENTRANCE
CONCRETE PEDESTAL DETAILS**

2
E/5

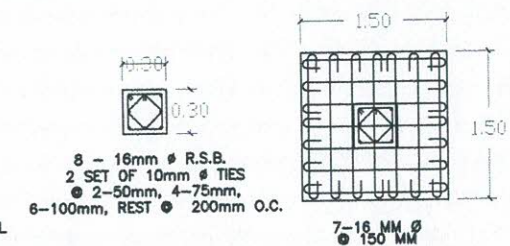
SCALE









1 : 50 MTS.

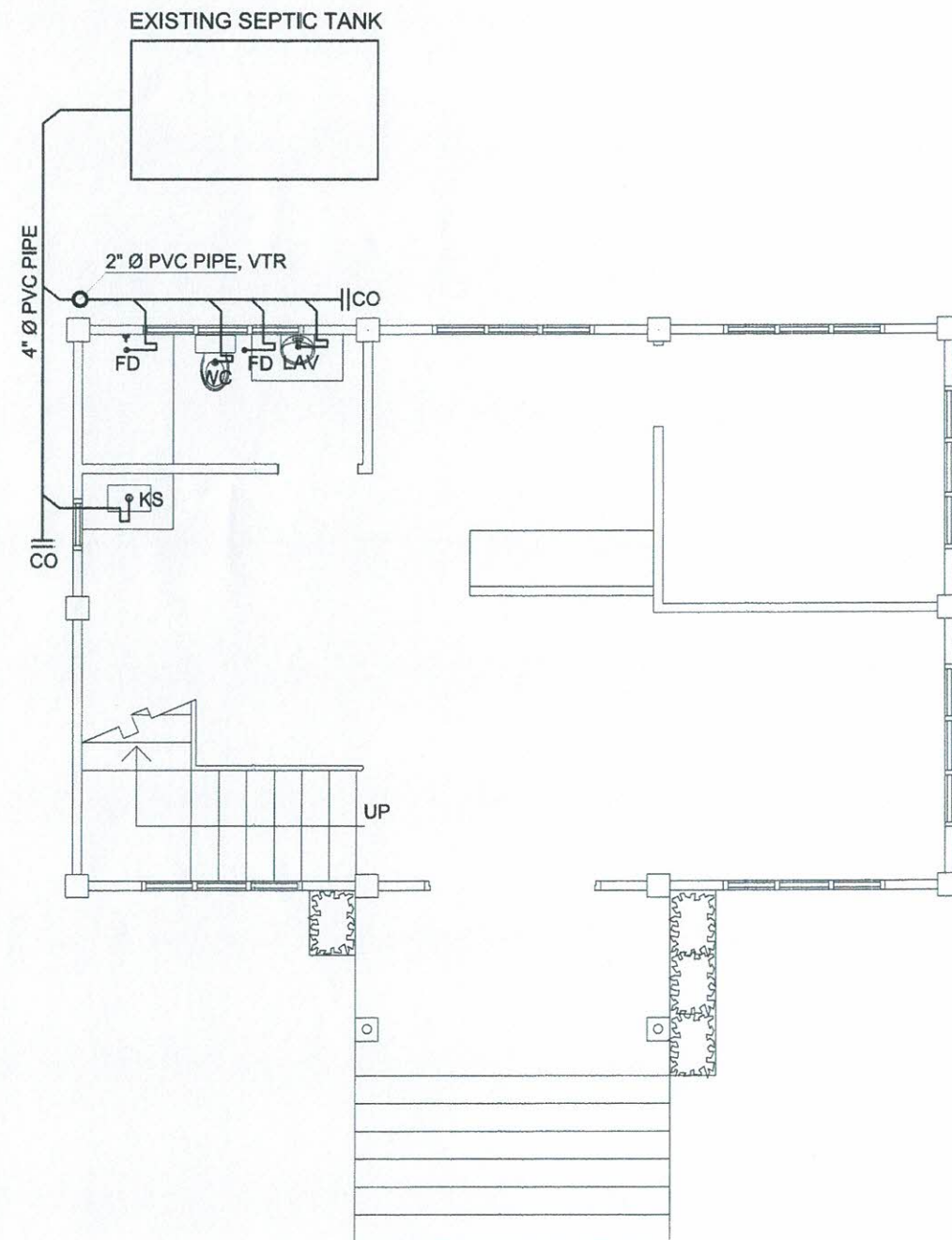
SCHEDULE OF FOOTINGS

NAME	TYPE	THICKNESS	SIZE (LxW)	DEPTH	REINFORCEMENT
F1	ISOLATED	300 MM	1000 x 1000 MM	1300 MM	BOTTOM
					ALONG L ALONG W

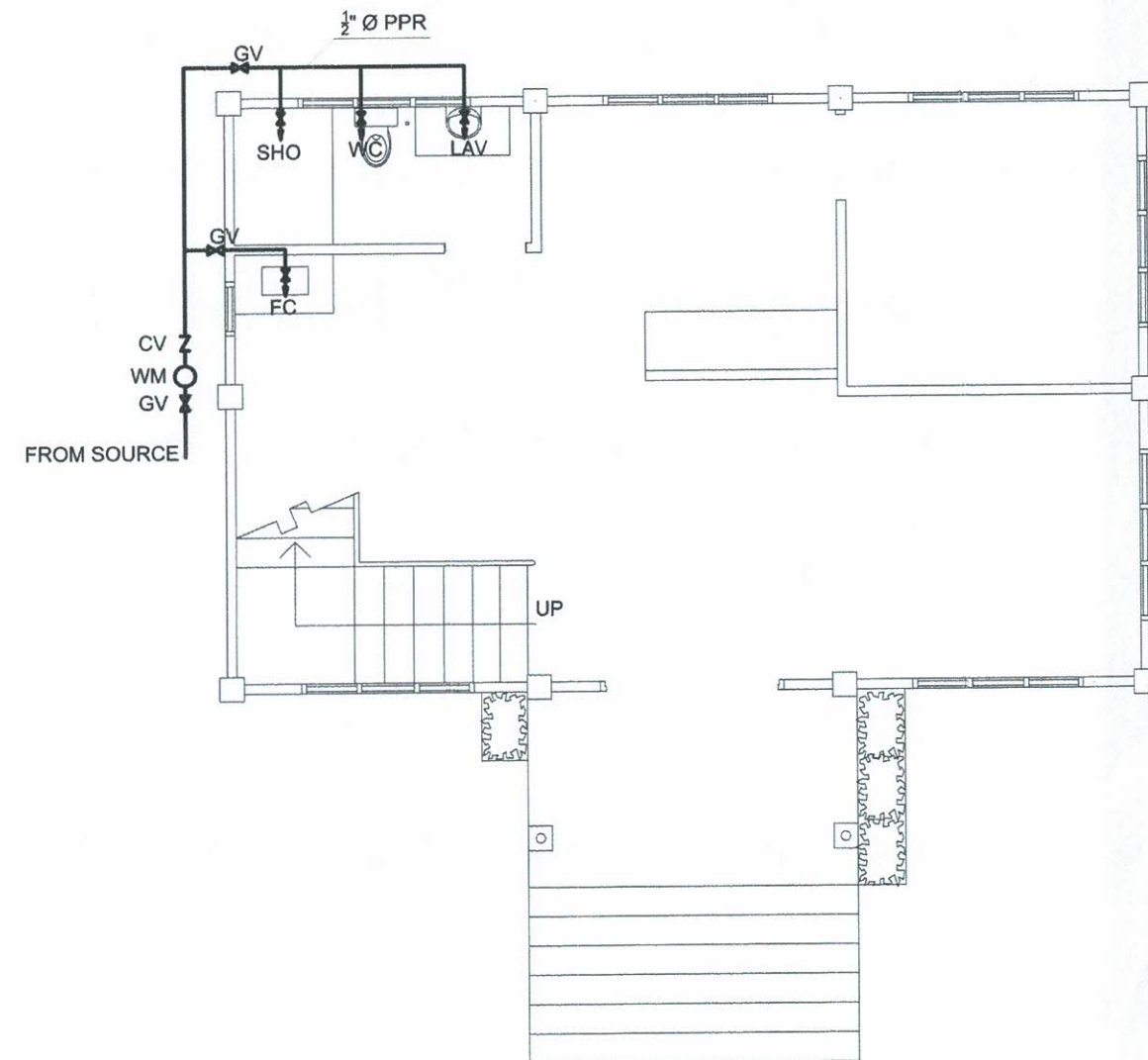
COLUMN	DIMENSION	REINFORCEMENT	NO. OF TIES & SPACING
C1	300 MM X 300 MM	8 - 16mm ϕ R.S.B.	2 SET OF 10mm ϕ TIES @ 2-50mm, 4-75mm, 6-100mm, REST @ 200mm O.C.



PREPARED BY:	END USER:	REVIEWED BY:	ENDORSED BY:	REC. APPROVAL:	APPROVED BY:	PROJECT TITLE/LOCATION:	IMPLEMENTING AGENCY:	SHT NO.	
 R. J. R. SANCHEZ PDU	 A. P. FERRER DEAN CED	 R. P. PERA PROFESSIONAL ELECTRICAL ENGR	 S. B. BAYOT JR. HEAD PDU	 O. B. DELOS REYES DIRECTOR PLANNING AND DEVT. OFFICE	 M. J. D. TEPORA VPPD CVSU	 J. X. B. NEPOMACENO VPASS CVSU	 H. D. ROBLES PRES CVSU	REPAIR AND IMPROVEMENT OF BEAUTIFUL HOUSE (GRANARY) CAVITE STATE UNIVERSITY MAIN CAMPUS	CAVITE STATE UNIVERSITY E - 5

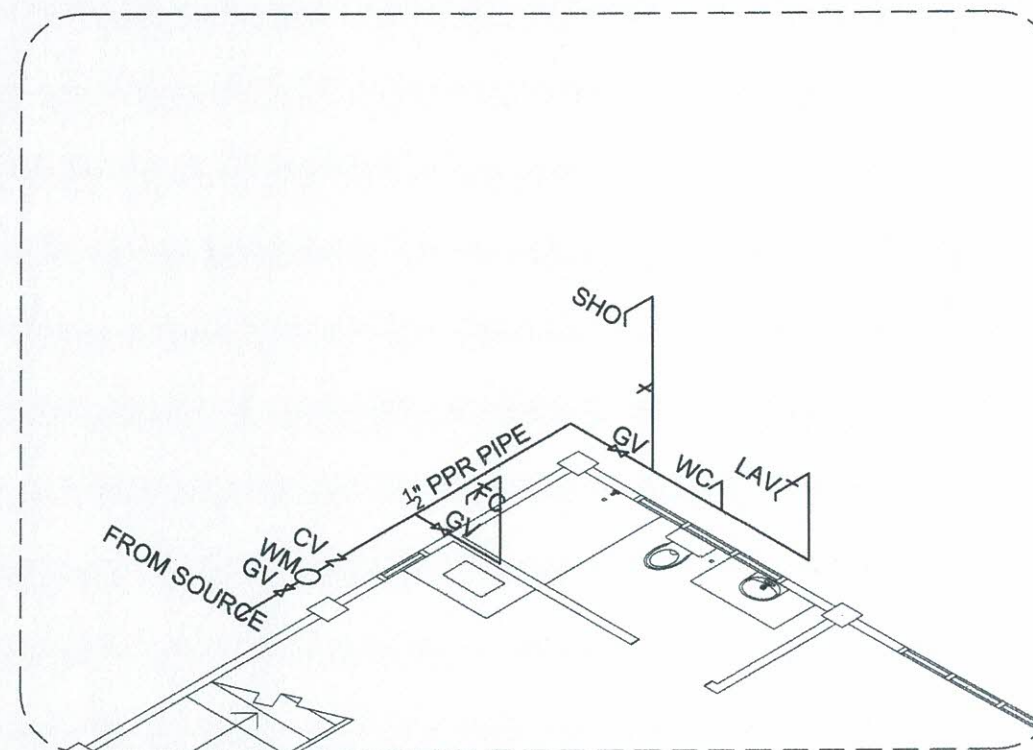
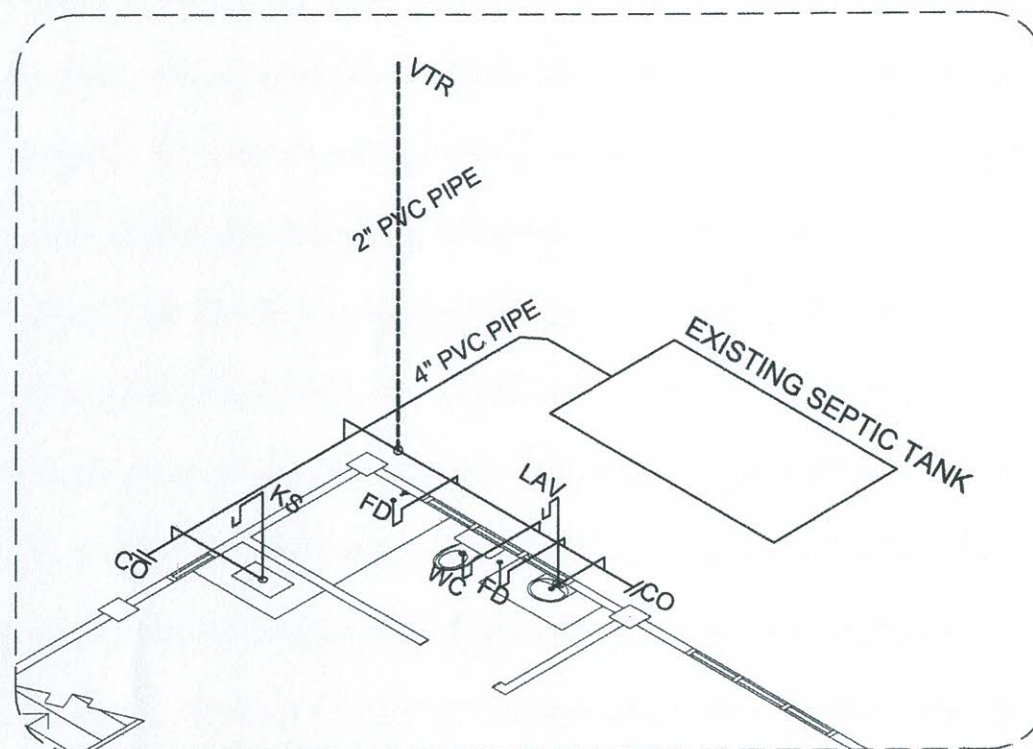


1
P1 SCALE 1 : 75 MTS.
GROUND FLOOR SANITARY LAYOUT



2
P1 SCALE 1 : 75 MTS.
GROUND FLOOR WATER SUPPLY LAYOUT

	PREPARED BY: L. M. ABELLAR IPU QVPPD	END USER: A. P. FERRER DEAN CED	REVIEWED BY:	ENDORSED BY: S. B. BAYOT JR. HEAD ROU	O. B. DELOS REYES DIRECTOR PLANNING AND DEVT. OFFICE	REC. APPROVAL: M. J. D. TEPORA VPPD CVSU	J. X. B. NEPOMUCENO VPASS CVSU	APPROVED BY: H. D. ROBLES PRES CVSU	PROJECT TITLE/LOCATION: REPAIR AND IMPROVEMENT OF BEAUTIFUL HOUSE (GRANARY) CAVITE STATE UNIVERSITY MAIN CAMPUS	IMPLEMENTING AGENCY: CAVITE STATE UNIVERSITY	SHT NO: P - 1
--	--	---------------------------------------	--------------	---	---	--	-----------------------------------	---	--	--	------------------



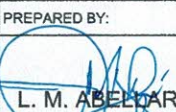
LEGENDS:

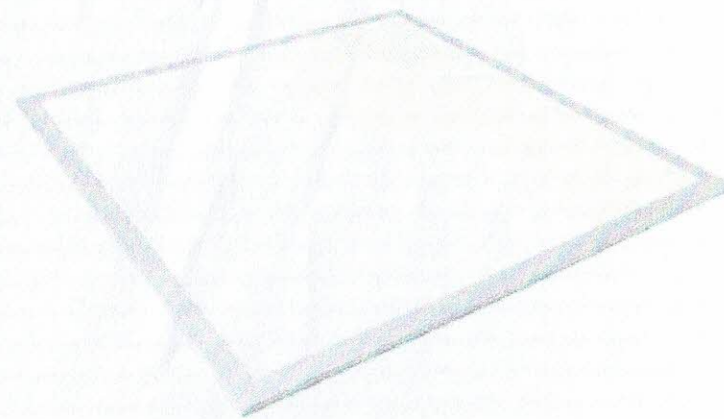
- KS - KITCHEN SINK
- WC - WATER CLOSET
- LAV - LAVATORY
- FC - FAUCET
- CO - CLEAN OUT
- FD - FLOOR DRAIN
- GV - GATE VALVE
- CV - CHECK VALVE
- WM - WATER METER
- VTR - VENT THROUGH ROOF

1
P2 SCALE

ISOMETRIC DIAGRAM

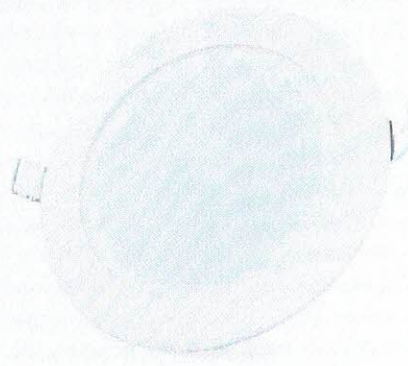
NTS

	PREPARED BY:  L. M. ABELLAN IPU OVPPD	END USER:  A. P. FERRER DEAN CED	REVIEWED BY: 	ENDORSED BY:  S. B. BAYOT JR. HEAD PDU	ENDORSED BY:  O. B. DELOS REYES DIRECTOR PLANNING AND DEVT. OFFICE	REC. APPROVAL:  M. J. D. TEPORA VPPD CVSU	REC. APPROVAL:  J. X. B. NEPOMUCENO VPASS CVSU	APPROVED BY:  H. D. ROBLES PRES CVSU	PROJECT TITLE/LOCATION: REPAIR AND IMPROVEMENT OF BEAUTIFUL HOUSE (GRANARY) CAVITE STATE UNIVERSITY MAIN CAMPUS	IMPLEMENTING AGENCY: CAVITE STATE UNIVERSITY	SHT NO: P - 2
---	---	--	----------------------	---	--	---	--	--	---	--	------------------



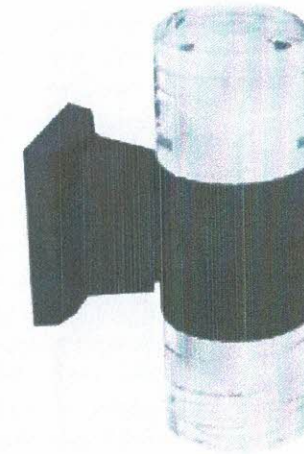
1
E7 SCALE NTS
20W, LED PANEL LIGHT, SQUARE

SPECIFICATION	
DIMENSION	295 mm. x 295 mm. x 27 mm.
WATTAGE	20 WATTS
LUMINOUS FLUX	2000 lm.
IP RATING	IP 40
WORKING VOLTAGE	175V-265V
COLOR TEMPERATURE	DAYLIGHT



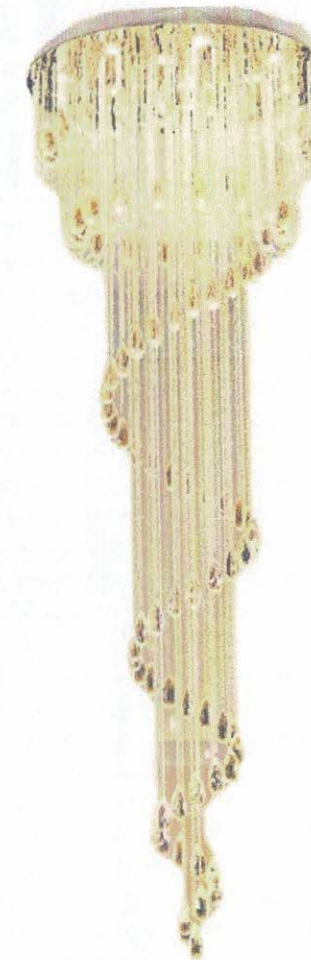
2
E7 SCALE NTS
6W, LED PANEL LIGHT, ROUND

SPECIFICATION	
DIMENSION	3.3" dia. x 0.9 cm.
WATTAGE	3 WATTS
LUMINOUS FLUX	300 lm.
IP RATING	IP 40
WORKING VOLTAGE	175V-265V
COLOR TEMPERATURE	DAYLIGHT



3
E7 SCALE NTS
2-7W, LED WALL LAMP

SPECIFICATION	
DIMENSION	90 mm. dia. x H210 mm.
WATTAGE	2-7 WATTS
LUMINOUS FLUX	2-700 lm.
IP RATING	IP 67
WORKING VOLTAGE	175V-265V
COLOR TEMPERATURE	DAYLIGHT



4
E7 SCALE NTS
CHANDELIER TYPE LIGHTING

SPECIFICATION	
DIMENSION	> 500 mm. dia. x H1600 mm.
WATTAGE	> 50 WATTS - 60 WATTS
LUMINOUS FLUX	> 500 lm. - 600 lm.
IP RATING	IP 40
WORKING VOLTAGE	175V-265V
COLOR TEMPERATURE	WARMLIGHT

	PREPARED BY:	END USER:	REVIEWED BY:	ENDORSED BY:	REC. APPROVAL:	APPROVED BY:	PROJECT TITLE/LOCATION:	IMPLEMENTING AGENCY:	SHT NO:
	 R. J. R. SANCHEZ PDU OVPPD	 A. P. FERRER DEAN CED	 R. P. PENA PROFESSIONAL ELECTRICAL ENGR.	 S. B. BAYOT JR. HEAD PDU	 O. B. DELOS REYES DIRECTOR PLANNING AND DEVT. OFFICE	 M. J. D. TEPORA VPASS CVSU	 J. X. B. NEPOMUCENO CVSU	 H. D. ROBLES CVSU	REPAIR AND IMPROVEMENT OF BEAUTIFUL HOUSE (GRANARY) CAVITE STATE UNIVERSITY MAIN CAMPUS CAVITE STATE UNIVERSITY E - 7